

FED SUP CLASS
5 3 4 0

USER ACTIVITIES

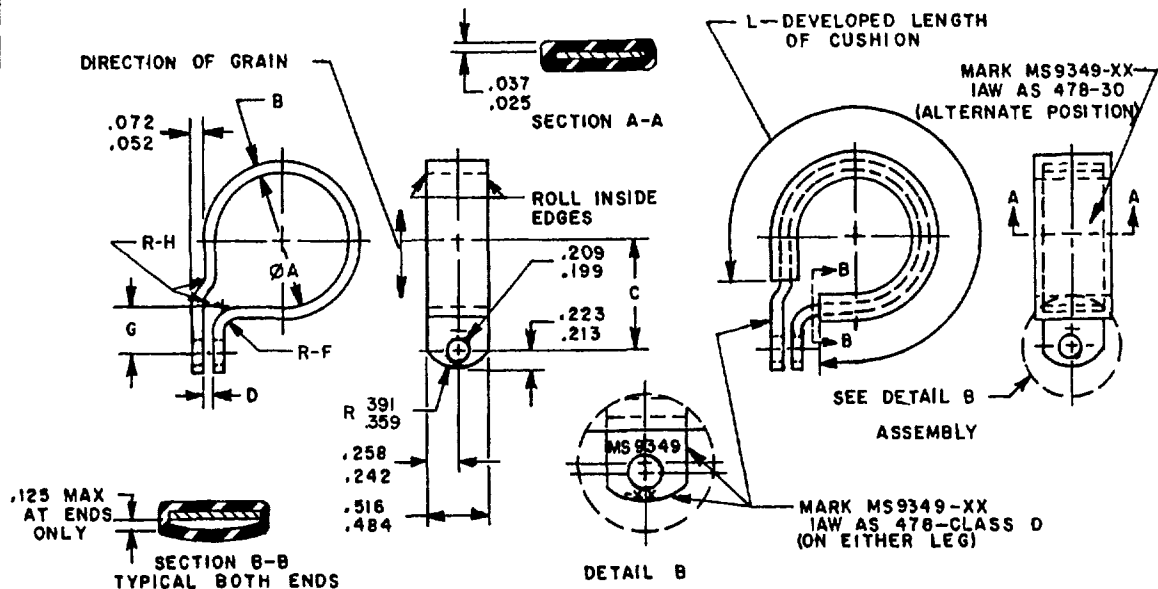


TABLE 1 DASH NUMBERS AND DIMENSIONS

DASH NUMBER	TUBE OUTSIDE DIAMETER NOM	Ø A BASIC	B +.000	C +.010	D	F RADIUS +.010	G +.010	H RADIUS +.010	L +.040 -.000	APPROX WEIGHT LBS/100
-01	.125	.188	.031	.423	.125-.141	.062	.312	.062	.595	.91
-02	.188	.250	.031	.457	.125-.141	.062	.312	.062	.679	.95
-03	.250	.312	.031	.498	.125-.141	.062	.312	.062	.908	1.12
-04	.312	.375	.031	.529	.125-.141	.062	.312	.062	1.097	1.27
-05	.375	.438	.031	.560	.125-.141	.062	.312	.062	1.306	1.41
-06	.438	.500	.031	.592	.125-.141	.062	.312	.062	1.515	1.56
-07	.500	.562	.031	.623	.125-.141	.062	.312	.062	1.724	1.72
-08	.562	.625	.031	.654	.125-.141	.062	.312	.062	1.930	1.86
-09	.625	.688	.051	.752	.125-.141	.109	.375	.094	2.092	3.07
-10	.688	.750	.051	.783	.125-.141	.109	.375	.094	2.299	3.28
-11	.750	.812	.051	.814	.125-.141	.109	.375	.094	2.506	3.49
-12	.812	.875	.051	.845	.125-.141	.109	.375	.094	2.721	3.71
-13	.875	.938	.051	.877	.125-.141	.109	.375	.094	2.929	3.93
-14	.938	1.000	.051	.908	.125-.141	.109	.375	.094	3.136	4.13
-15	1.000	1.062	.051	.939	.125-.141	.109	.375	.094	3.343	4.35
-16	1.062	1.125	.051	.970	.125-.141	.109	.375	.094	3.555	4.56
-17	1.125	1.188	.051	1.002	.125-.141	.109	.375	.094	3.769	4.78
-18	1.188	1.250	.064	1.062	.150-.172	.125	.400	.125	3.914	6.04
-19	1.250	1.312	.064	1.093	.150-.172	.125	.400	.125	4.125	6.30
-20	1.312	1.375	.064	1.125	.150-.172	.125	.400	.125	4.339	6.56
-21	1.375	1.438	.064	1.156	.150-.172	.125	.400	.125	4.551	6.81
-22	1.438	1.500	.064	1.188	.150-.172	.125	.400	.125	4.754	7.07
-23	1.500	1.562	.064	1.219	.150-.172	.125	.400	.125	5.006	7.44
-24	1.562	1.625	.064	1.250	.150-.172	.125	.400	.125	5.173	7.57
-25	1.625	1.688	.064	1.281	.150-.172	.125	.400	.125	5.386	7.83
-26	1.688	1.750	.064	1.312	.150-.188	.125	.400	.125	5.595	8.06
-27	1.750	1.812	.064	1.344	.150-.188	.125	.400	.125	5.798	8.32
-28	1.812	1.875	.064	1.375	.150-.188	.125	.400	.125	6.011	8.58
-29	1.875	1.938	.064	1.406	.150-.188	.125	.400	.125	6.223	8.85
-30	1.938	2.000	.064	1.438	.150-.188	.125	.400	.125	6.436	9.10
-31	2.000	2.062	.064	1.469	.150-.188	.125	.400	.125	6.643	9.34

(B) ENTIRE STANDARD REVISED

NAVY-AS Other Cust AIR FORCE-II	INTERNATIONAL INTEREST	TITLE CLAMP, LOOP, CUSHIONED, JOGGLED, CRES, .204 HOLE	MILITARY STANDARD MS9349
PROCUREMENT SPECIFICATION NONE	SUPERSEDES:	PAGE 1	OF 2

DISTRIBUTION STATEMENT A Approved for public release; distribution is unlimited

This military standard is approved for use by all Departments and Agencies of the Department of Defense. Selection for all new engineering and design applications and for repetitive use shall be made from this document, when applicable.

REVIEWER ACTIVITIES
DLA-1S

APPROVED 14 JAN 65 REVISED 29 FEB 68 29 JUN 86

USER ACTIVITIES

REVIEWER ACTIVITIES
DLA - IS

This military standard is approved for use by all Departments and Agencies of the Department of Defense. Selection for all new engineering and design applications and for repetitive use shall be made from this document, when applicable.

FED SUP CLASS
5340

REQUIREMENTS

1. MATERIAL: CLAMP-CORROSION RESISTANT STEEL IN ACCORDANCE WITH AMS 5510
CUSHION-POLYTETRAFLUOROETHYLENE IN ACCORDANCE WITH AMS 3651.
2. CLAMP FORM: CLAMP SHALL BE FORMED AS SHOWN. DIMENSION "D" SHALL FALL WITHIN THE SPECIFIED LIMITS WHEN CLAMP IS ASSEMBLED ON A BAR THE DIAMETER OF WHICH IS EQUAL TO THE NOMINAL TUBE OD WITHIN $\pm .001$. HOLES SHALL BE IN ALIGNMENT WITHIN .010 AND CLAMP SHALL BE FLAT WITHIN .010 THRU CLAMP WIDTH WHEN ASSEMBLED ON TEST BAR. IN THE FREE POSITION, CLAMP MAY SPRING OPEN PROVIDED THE ABOVE CONDITIONS ARE MET.
3. EDGES REMOVE BURRS AND SHARP EDGES.
4. PART NUMBER THE PART NUMBER SHALL CONSIST OF THE BASIC MS NUMBER FOLLOWED BY A DASH NUMBER FROM TABLE I

EXAMPLE MS9349-01

└── DASH NUMBER

└── BASIC MS NUMBER

MS9349-01 INDICATES - CLAMP, LOOP, CUSHIONED, JOGGLED, CRES, .204 HOLE; TUBE OUTSIDE DIAMETER NOMINAL .125, BASIC DIAMETER .188.

NOTES:

1. ALL DIMENSIONS ARE IN INCHES
2. DO NOT USE UNASSIGNED PART NUMBERS.
3. IN THE EVENT OF A CONFLICT BETWEEN THE TEXT OF THIS STANDARD AND THE REFERENCES CITED HEREIN, THE TEXT OF THIS STANDARD SHALL TAKE PRECEDENCE.
4. REFERENCED GOVERNMENT (OR NONGOVERNMENT) DOCUMENTS OF THE ISSUE LISTED IN THAT ISSUE OF THE DEPARTMENT OF DEFENSE INDEX OF SPECIFICATIONS AND STANDARDS (DODISS) SPECIFIED IN THE SOLICITATION FORM A PART OF THIS STANDARD TO THE EXTENT SPECIFIED HEREIN.
5. THIS STANDARD WAS DEVELOPED COOPERATIVELY WITH THE SAE AEROSPACE PROPULSION DIVISION.
6. AS AND AMS ARE SAE PUBLICATIONS.

APPROVED 14 JAN 65 REVISED 6 FOR CHANGES SEE PAGE 1 AND 2

P A NAVY-AS Other Cost AIR FORCE-11	INTERNATIONAL INTEREST	TITLE CLAMP, LOOP, CUSHIONED, JOGGLED, CRES, .204 HOLE	MILITARY STANDARD MS9349
PROCUREMENT SPECIFICATION NONE	SUPERSEDES:	PAGE 2 OF 2	