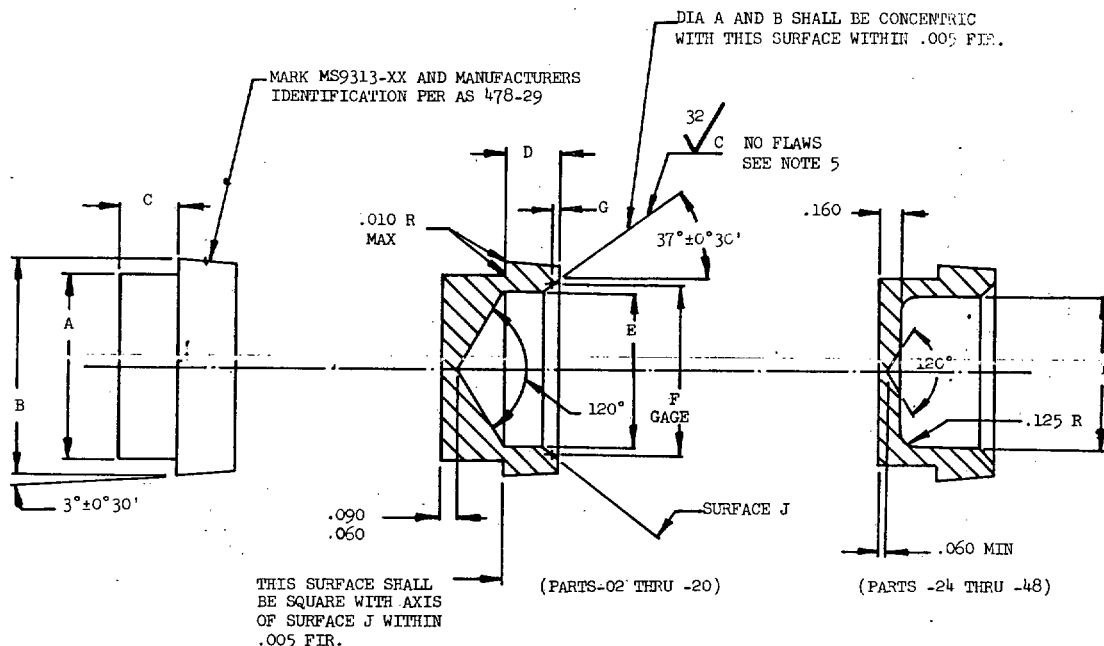


MS9313 (ASG)

FED. SUP CLASS

4730



PART NO.	NOM TUBE OD	A DIA +.000 -.005	B DIA +.000 -.003	C	D	E DIA	F DIA	G	APPROX WEIGHT LB/100
MS9313-02	.125	.172	.267	.230	.235	.090	.124	.041	.37
MS9313-03	.188	.234	.329	.230	.235	.150	.185	.040	.63
MS9313-04	.250	.297	.383	.230	.235	.200	.242	.036	1.00
MS9313-05	.312	.366	.445	.230	.235	.260	.302	.035	1.44
MS9313-06	.375	.432	.502	.230	.228	.320	.358	.031	1.67
MS9313-07	.438	.494	.564	.230	.255	.385	.430	.036	2.18
MS9313-08	.500	.562	.682	.230	.285	.438	.504	.044	3.27
MS9313-09	.562	.626	.743	.230	.295	.500	.555	.036	3.82
MS9313-10	.625	.690	.797	.230	.302	.562	.621	.039	4.36
MS9313-11	.688	.762	.908	.230	.305	.625	.698	.048	5.67
MS9313-12	.750	.826	.972	.230	.306	.686	.769	.054	6.39
MS9313-14	.875	.953	1.097	.230	.325	.812	.894	.054	8.09
MS9313-16	1.000	1.081	1.222	.230	.342	.938	1.021	.055	9.92
MS9313-18	1.125	1.209	1.409	.260	.370	1.062	1.174	.074	13.91
MS9313-20	1.250	1.339	1.534	.300	.397	1.188	1.299	.074	17.00
MS9313-24	1.500	1.609	1.784	.300	.405	1.438	1.532	.062	23.61
MS9313-28	1.750	1.882	2.159	.400	.405	1.688	1.839	.100	34.90
MS9313-32	2.000	2.159	2.409	.400	.405	1.938	2.099	.107	42.65
MS9313-40	2.500	2.659	2.911	.400	.405	2.438	2.594	.117	57.75
MS9313-48	3.000	3.172	3.411	.400	.405	2.938	3.099	.107	75.45

1. MATERIAL: CORROSION AND HEAT RESISTANT STEEL AMS 5646.
2. SURFACE ROUGHNESS: AS 291. UNLESS OTHERWISE SPECIFIED SURFACES TO BE 125 MICROINCHES.
3. BREAK SHARP EDGES .003 - .015 UNLESS OTHERWISE SPECIFIED.
4. DIMENSIONS IN INCHES. UNLESS OTHERWISE SPECIFIED: TOLERANCES: LINEAR DIMENSIONS $\pm .010$, ANGULAR DIMENSIONS $\pm 5^\circ$.
5. THIS SURFACE MUST BE FREE OF NICKS, CHATTER MARKS OR LOW SPOTS. UNBROKEN LINE OF CONTACT TO SHOW ALL AROUND AT OTHER THAN EXTREMITIES OF THIS SURFACE WHEN ROTATED IN CONTACT WITH $74^\circ 0' \pm 0^\circ 1'$ INCLUDED ANGLE GAGE LIGHTLY COATED BY RUBBING WITH CARBON PAPER.
6. PARTS SUBJECT TO FLUORESCENT PENETRANT INSPECTION PER AMS 2645.
7. DO NOT USE UNASSIGNED PART NUMBERS.

REFERENCED DOCUMENTS SHALL BE OF THE ISSUE IN EFFECT ON DATE OF INVITATIONS FOR BID.

AS & AMS ARE SOCIETY OF AUTOMOTIVE ENGINEERS, INC. PUBLICATIONS.

THIS STANDARD WAS DEVELOPED COOPERATIVELY WITH THE ENGINE AND PROPELLER UTILITY PARTS COMMITTEE OF THE SAE.

P.A. USAF - 11	TITLE CAP, TUBE - AMS 5646	MILITARY STANDARD
Other Cust Navy - Weps		MS9313 (ASG)
PROCUREMENT SPECIFICATION NONE	SUPERSEDES:	SHEET 1 OF 1