

FED SUP CLASS
5307

USER ACTIVITIES

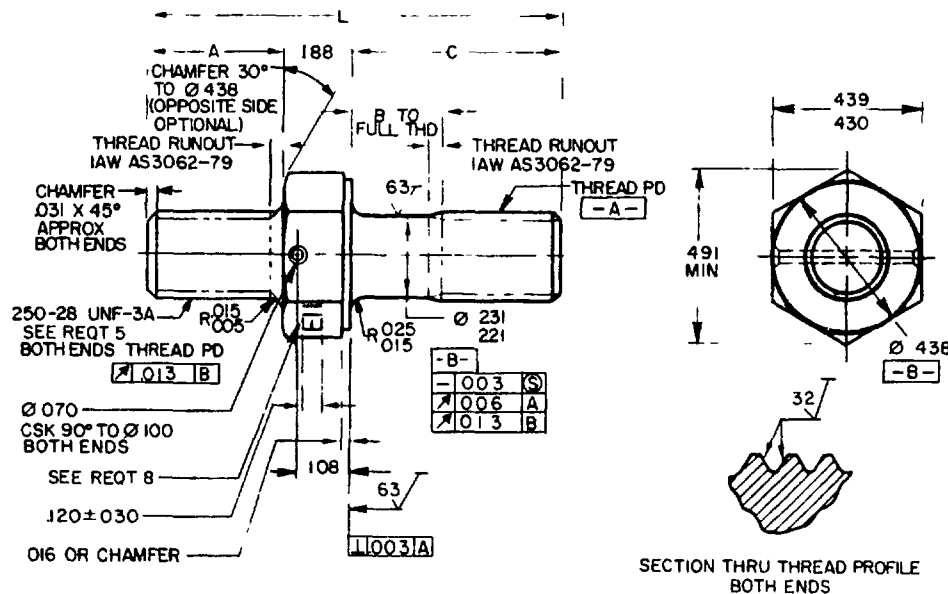


TABLE 1 DASH NUMBERS AND DIMENSIONS

DASH NUMBER	A	B + .000 - .060	C	L REL	APPROX WEIGHT LBS/100	DASH NUMBER	A	B + .000 - .060	C	L REL	APPROX WEIGHT LBS/100
-001	438	✓	500	1 125	1 86	-050	500	1/	500	1 188	1 92
-002	438	✓	562	1 188	1 92	-051	500	1/	562	1 250	1 98
-003	438	✓	625	1 250	1 98	-052	500	1/	625	1 312	2 06
-004	438	✓	688	1 312	2 06	-053	500	1/	688	1 375	2 12
-005	438	✓	750	1 375	2 12	-054	500	1/	750	1 438	2 20
-006	438	✓	812	1 438	2 20	-055	500	1/	812	1 500	2 26
-007	438	125	875	1 500	2 26	-056	500	125	875	1 562	2 34
-008	438	188	938	1 562	2 34	-057	500	188	938	1 625	2 40
-009	438	.250	1 000	1 625	2 40	-058	500	250	1 000	1 688	2 49
-010	438	312	1 062	1 688	2 49	-059	500	312	1 062	1 750	2 54
-011	438	375	1 125	1 750	2 54	-060	500	375	1 125	1 812	2 63
-012	438	438	1 188	1 812	2 63	-061	500	438	1 188	1 875	2 68
-013	438	500	1 250	1 875	2 68	-062	500	500	1 250	1 938	2 77
-014	438	562	1 312	1 938	2 77	-063	500	562	1 312	2 000	2 83
-015	438	625	1 375	2 000	2 83	-064	500	625	1 375	2 062	2 91
-016	438	688	1 438	2 062	2 91	-065	500	688	1 438	2 125	2 97
-017	438	750	1 500	2 125	2 97	-066	500	750	1 500	2 188	3 05
-018	438	812	1 562	2 188	3 05	-067	500	812	1 562	2 250	3 11
-019	438	875	1 625	2 250	3 11	-068	500	875	1 625	2 312	3 19
-020	438	938	1 688	2 312	3 19	-069	500	938	1 688	2 375	3 25
-021	438	1 000	1 750	2 375	3 25	-070	500	1 000	1 750	2 438	3 32
-022	438	1 062	1 812	2 438	3 32	-071	500	1 062	1 812	2 500	3 39
-023	438	1 125	1 875	2 500	3 39	-072	500	1 125	1 875	2 562	3 48
-024	438	1 188	1 938	2 562	3 48	-073	500	1 188	1 938	2 625	3 53
-025	438	1 250	2 000	2 625	3 53	-074	500	1 250	2 000	2 688	3 62

(B) ENTIRE STANDARD REVISED

P A NAVY-AS Other Cost ARMY-AR AIR FORCE-99	INTERNATIONAL INTEREST	TITLE STUD, SHOULDERED, HEXAGON WRENCHING, DRILLED, STEEL, .250-28 UNF-3A X .250-28 UNF-3A	MILITARY STANDARD MS9310
PROCUREMENT SPECIFICATION AMS 7452-73	SUPERSEDES:	PAGE 1 OF 2	

DD FORM 672-1 (COORDINATED)
1 MAY 73

PREVIOUS EDITIONS OF THIS FORM ARE OBSOLETE

5307-0444

DISTRIBUTION STATEMENT A Approved for public release, distribution is unlimited
This military standard is approved for use by all Departments and Agencies of the Department of Defense
Selection for all new engineering and design applications and for repetitive use shall be made from this document when applicable

REVIEWER ACTIVITIES
AIR FORCE-82
DLA-15

APPROVED 24 FEB 60 REVISED (B) 22 MAY 86

USER ACTIVITIES

REVIEWER ACTIVITIES
AIR FORCE-82
DLA -IS

This military standard is approved for use by all Departments and Agencies of the Department of Defense. Selection for all new engineering and design applications and for repetitive use shall be made from this document, when applicable.

TABLE I DASH NUMBERS AND DIMENSIONS - CONTINUED

FED SUP CLASS
5307

DASH NUMBER	A	B + .000 - .060	C	L REF	APPROX WEIGHT LBS/100	DASH NUMBER	A	B + .000 - .060	C	L REF	APPROX WEIGHT LBS/100
-100	562	1/	500	1.250	1 98	-150	625	1/	500	1 312	2 06
-101	562	1/	562	1 312	2 06	-151	625	1/	562	1 375	2 12
-102	562	1/	625	1 375	2 12	-152	625	1/	625	1 438	2 20
-103	562	1/	688	1.438	2 20	-153	625	1/	688	1 500	2 26
-104	562	1/	750	1.500	2 26	-154	625	1/	750	1 562	2 34
-105	562	1/	812	1 562	2.34	-155	.625	1/	812	1 625	2 40
-106	562	.125	.875	1 625	2.40	-156	625	.125	875	1 688	2.49
-107	562	.188	938	1 688	2 49	-157	.625	.188	938	1 750	2 54
-108	562	.250	1 000	1 750	2 54	-158	625	.250	1 000	1 812	2 63
-109	562	.312	1 062	1.812	2.63	-159	625	.312	1 062	1 875	2 68
-110	562	.375	1.125	1.875	2.68	-160	625	.375	1 125	1 938	2 77
-111	.562	.438	1.188	1.938	2 77	-161	625	.438	1 188	2.000	2 83
-112	.562	.500	1.250	2.000	2.83	-162	625	.500	1 250	2 062	2 91
-113	.562	.562	1 312	2 062	2 91	-163	.625	.562	1 312	2 125	2 97
-114	562	.625	1 375	2 125	2.97	-164	625	.625	1 375	2 188	3 05
-115	562	.688	1 438	2 188	3 05	-165	625	.688	1 438	2 250	3 11
-116	562	.750	1 500	2 250	3 11	-166	625	.750	1 500	2 312	3 19
-117	562	.812	1.562	2 312	3.19	-167	625	.812	1.562	2 375	3 25
-118	.562	.875	1.625	2 375	3.25	-168	625	.875	1 625	2 438	3 32
-119	562	.938	1 688	2 438	3 32	-169	625	.938	1 688	2 500	3 39
-120	562	1.000	1 750	2 500	3.39	-170	625	1 000	1 750	2 562	3 48
-121	562	1 062	1 812	2 562	3 48	-171	625	1 062	1 812	2 625	3 53
-122	562	1 125	1 875	2 625	3 53	-172	625	1 125	1 875	2 688	3 62
-123	562	1 188	1 938	2 688	3 62	-173	625	1 188	1 938	2 750	3 67
-124	.562	1.250	2 000	2 750	3.67	-174	625	1 250	2 000	2 812	3 76

1/ THREAD TO HEAD MAXIMUM TWO INCOMPLETE THREADS

REQUIREMENTS.

1. MATERIAL STEEL IN ACCORDANCE WITH AMS 6322-80
2. FINISH CADMIUM PLATE IN ACCORDANCE WITH AMS 2400-80
3. HARDNESS 26-32HRC
4. DIMENSIONING AND TOLERANCING DIMENSIONING AND TOLERANCING SHALL BE IN ACCORDANCE WITH ANSI Y14.5M
5. THREADS THREADS SHALL BE IN ACCORDANCE WITH FED-STD-H28/2 ACCEPTABILITY OF SCREW THREADS SHALL BE IN ACCORDANCE WITH FED-STD-H28/20, SYSTEM 22
6. SURFACE TEXTURE SURFACE TEXTURE SHALL BE IN ACCORDANCE WITH AS291-64
7. MAGNETIC PARTICLE INSPECTION MAGNETIC PARTICLE INSPECTION SHALL BE IN ACCORDANCE WITH AMS 2640-83
8. MARKING MATERIAL IDENTIFICATION AND MARKING IN ACCORDANCE WITH AMS 2800-76 DEPRESSED .010 MAX
9. TOLERANCE UNLESS OTHERWISE SPECIFIED, TOLERANCES SHALL BE LINEAR DIMENSIONS $\pm .010$, ANGULAR DIMENSIONS $\pm 5^\circ$
10. EDGES BREAK SHARP EDGES .003 - .015, UNLESS OTHERWISE SPECIFIED
11. PART NUMBER THE PART NUMBER SHALL CONSIST OF THE BASIC MS NUMBER FOLLOWED BY A DASH NUMBER FROM TABLE I

EXAMPLE. MS9310-001

— DASH NUMBER
— BASIC MS NUMBER

MS9310-001 INDICATES STUD, SHOULDERED, HEXAGON WRENCHING, DRILLED, STEEL,
250-28 UNF-3A X 250-28 UNF-3A, LENGTH 1 125

NOTES

1. ALL DIMENSIONS ARE IN INCHES
2. DO NOT USE UNASSIGNED PART NUMBERS
3. IN THE EVENT OF A CONFLICT BETWEEN THE TEXT OF THIS STANDARD AND THE REFERENCES CITED HEREIN, THE TEXT OF THIS STANDARD SHALL TAKE PRECEDENCE
4. REFERENCED GOVERNMENT (OR NONGOVERNMENT) DOCUMENTS OF THE ISSUE LISTED IN THAT ISSUE OF THE DEPARTMENT OF DEFENSE INDEX OF SPECIFICATIONS AND STANDARDS (DODISS) SPECIFIED IN THE SOLICITATION FORM A PART OF THIS STANDARD TO THE EXTENT SPECIFIED HEREIN
5. THIS STANDARD WAS DEVELOPED COOPERATIVELY WITH THE SAE AEROSPACE PROPULSION DIVISION
6. AS AND AMS ARE SAE PUBLICATIONS.

P A NAVY-AS Other Cust ARMY-AR AIR FORCE-99	INTERNATIONAL INTEREST	TITLE STUD, SHOULDERED, HEXAGON WRENCHING, DRILLED, STEEL, .250-28 UNF-3A X .250-28 UNF-3A	MILITARY STANDARD MS9310
PROCUREMENT SPECIFICATION AMS 7452-73		SUPERSEDES:	PAGE 2 OF 2