

FED SUP CLASS
5307

USER ACTIVITIES.

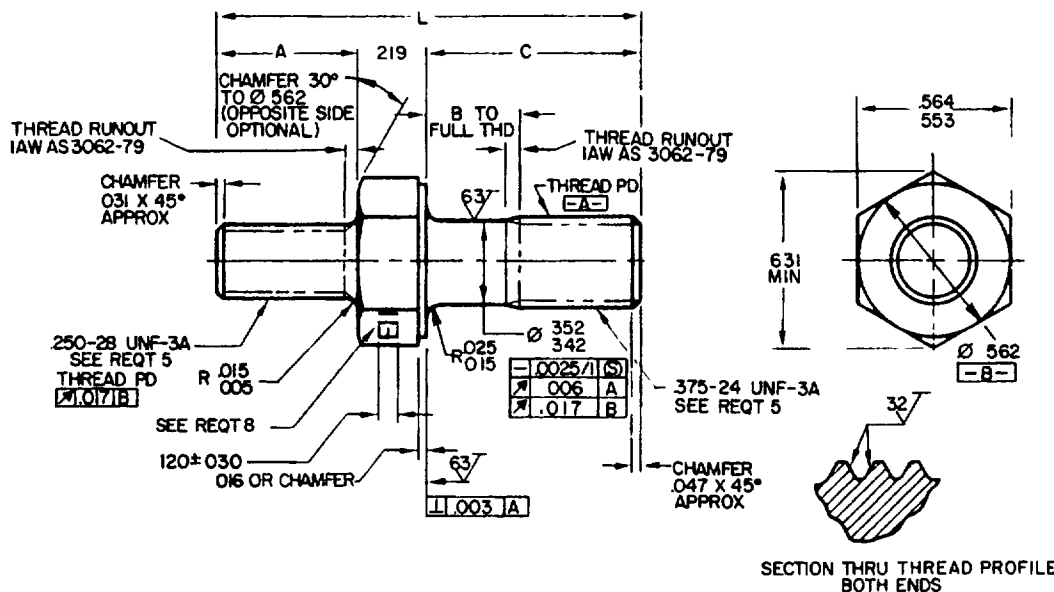


TABLE I DASH NUMBERS AND DIMENSIONS

DASH NUMBER	A	B + 000 - .060	C	L REF	APPROX WEIGHT LBS/100	DASH NUMBER	A	B + 000 - .060	C	L REF	APPROX WEIGHT LBS/100
-001	.438	1/	.750	1.406	4.16	-050	.500	1/	.750	1.469	4.32
-002	.438	1/	.812	1.469	4.32	-051	.500	1/	.812	1.531	4.49
-003	.438	1/	.875	1.531	4.49	-052	.500	1/	.875	1.594	4.66
-004	.438	1/	.938	1.594	4.66	-053	.500	1/	.938	1.656	4.83
-005	.438	1/	1.000	1.656	4.83	-054	.500	1/	1.000	1.719	5.00
-006	.438	1/	1.062	1.719	5.00	-055	.500	1/	1.062	1.781	5.17
-007	.438	1.25	1.125	1.781	5.17	-056	.500	1.25	1.125	1.844	5.34
-008	.438	1.88	1.188	1.844	5.34	-057	.500	1.88	1.188	1.906	5.49
-009	.438	.250	1.250	1.906	5.49	-058	.500	.250	1.250	1.969	5.66
-010	.438	.312	1.312	1.969	5.66	-059	.500	.312	1.312	2.031	5.82
-011	.438	.375	1.375	2.031	5.82	-060	.500	.375	1.375	2.094	5.99
-012	.438	.438	1.438	2.094	5.99	-061	.500	.438	1.438	2.156	6.16
-013	.438	.500	1.500	2.156	6.16	-062	.500	.500	1.500	2.219	6.33
-014	.438	.562	1.562	2.219	6.33	-063	.500	.562	1.562	2.281	6.50
-015	.438	.625	1.625	2.281	6.50	-064	.500	.625	1.625	2.344	6.67
-016	.438	.688	1.688	2.344	6.67	-065	.500	.688	1.688	2.406	6.82
-017	.438	.750	1.750	2.406	6.82	-066	.500	.750	1.750	2.469	6.99
-018	.438	.812	1.812	2.469	6.99	-067	.500	.812	1.812	2.531	7.15
-019	.438	.875	1.875	2.531	7.15	-068	.500	.875	1.875	2.594	7.32
-020	.438	.938	1.938	2.594	7.32	-069	.500	.938	1.938	2.656	7.49
-021	.438	1.000	2.000	2.656	7.49	-070	.500	1.000	2.000	2.719	7.66
-022	.438	1.062	2.062	2.719	7.66	-071	.500	1.062	2.062	2.781	7.83
-023	.438	1.125	2.125	2.781	7.83	-072	.500	1.125	2.125	2.844	8.00
-024	.438	1.250	2.250	2.844	8.00	-073	.500	1.250	2.250	2.906	8.17
-025	.438	1.375	2.375	2.906	8.17	-074	.500	1.375	2.375	2.969	8.34
-026	.438	1.500	2.500	2.969	8.34	-075	.500	1.500	2.500	3.031	8.50
-027	.438	1.625	2.625	3.031	8.50	-076	.500	1.625	2.625	3.094	8.67
-028	.438	1.750	2.750	3.094	8.67	-077	.500	1.750	2.750	3.156	8.83
-029	.438	1.875	2.875	3.156	8.83	-078	.500	1.875	2.875	3.219	9.00
-030	.438	2.000	3.000	3.219	9.00	-079	.500	2.000	3.000	3.281	9.17

(B) ENTIRE STANDARD REVISED

P A NAVY-AS Other Cont ARMY-AR AIR FORCE-99	INTERNATIONAL INTEREST	TITLE STUD, SHOULDERS AND STEPPED, HEXAGON WRENCHING, STEEL, 250-28 UNF-3A X .375-24 UNF-3A	MILITARY STANDARD MS9307
PROCUREMENT SPECIFICATION AMS 7452-73	SUPERSEDES:	PAGE 1 OF 3	

DD FORM 672-1 (COORDINATED)

PREVIOUS EDITIONS OF THIS FORM ARE OBSOLETE

5307-0441

REVIEWER ACTIVITIES.
AIR FORCE-82
DLA-15DISTRIBUTION STATEMENT A Approved for public release; distribution is unlimited.
This military standard is approved for use by all Departments and Agencies of the Department of Defense.
Selection for all engineering and design applications and for repetitive use shall be made from this document when applicable.

AMSC N/A

APPROVED 24 FEB 60 REVISED (B) 22 MAY 86

FED SUP CLASS
5307

TABLE 1 DASH NUMBERS AND DIMENSIONS - CONTINUED

DASH NUMBER	A	B + .000 - .060	C	L REF	APPROX WEIGHT LBS/100	DASH NUMBER	A	B + .000 - .060	C	L REF	APPROX WEIGHT LBS/100
-100	.562	1/	.750	1.531	4.49	-150	.625	1/	.750	1.594	4.66
-101	.562	1/	.812	1.594	4.66	-151	.625	1/	.812	1.656	4.83
-102	.562	1/	.875	1.656	4.83	-152	.625	1/	.875	1.719	5.00
-103	.562	1/	.938	1.719	5.00	-153	.625	1/	.938	1.781	5.17
-104	.562	1/	1.000	1.781	5.17	-154	.625	1/	1.000	1.844	5.34
-105	.562	1/	1.062	1.844	5.34	-155	.625	1/	1.062	1.906	5.49
-106	.562	1.25	1.125	1.906	5.49	-156	.625	1.25	1.125	1.969	5.66
-107	.562	1.88	1.188	1.969	5.66	-157	.625	1.88	1.188	2.031	5.82
-108	.562	.250	1.250	2.031	5.82	-158	.625	.250	1.250	2.094	5.99
-109	.562	.312	1.312	2.094	5.99	-159	.625	.312	1.312	2.156	6.16
-110	.562	.375	1.375	2.156	6.16	-160	.625	.375	1.375	2.219	6.33
-111	.562	.438	1.438	2.219	6.33	-161	.625	.438	1.438	2.281	6.50
-112	.562	.500	1.500	2.281	6.50	-162	.625	.500	1.500	2.344	6.67
-113	.562	.562	1.562	2.344	6.67	-163	.625	.562	1.562	2.406	6.82
-114	.562	.625	1.625	2.406	6.82	-164	.625	.625	1.625	2.469	6.99
-115	.562	.688	1.688	2.469	6.99	-165	.625	.688	1.688	2.531	7.15
-116	.562	.750	1.750	2.531	7.15	-166	.625	.750	1.750	2.594	7.32
-117	.562	.812	1.812	2.593	7.32	-167	.625	.812	1.812	2.656	7.49
-118	.562	.875	1.875	2.656	7.49	-168	.625	.875	1.875	2.719	7.66
-119	.562	.938	1.938	2.719	7.66	-169	.625	.938	1.938	2.781	7.83
-120	.562	1.000	2.000	2.781	7.83	-170	.625	1.000	2.000	2.844	8.15
-121	.562	1.062	2.062	2.844	8.15	-171	.625	1.062	2.062	2.906	8.49
-122	.562	1.125	2.125	2.906	8.49	-172	.625	1.125	2.125	2.969	8.82
-123	.562	1.250	2.250	3.031	8.82	-173	.625	1.250	2.250	3.094	9.16
-124	.562	1.375	2.375	3.156	9.16	-174	.625	1.375	2.375	3.219	9.40
-125	.562	1.500	2.500	3.281	9.48	-175	.625	1.500	2.500	3.344	9.82
-126	.562	1.625	2.625	3.406	9.82	-176	.625	1.625	2.625	3.469	10.15
-127	.562	1.750	2.750	3.531	10.15	-177	.625	1.750	2.750	3.594	10.21
-128	.562	1.875	2.875	3.656	10.21	-178	.625	1.875	2.875	3.719	10.27
-129	.562	2.000	3.000	3.781	10.27	-179	.625	2.000	3.000	3.844	10.35

1/ THREAD TO HEAD MAXIMUM TWO INCOMPLETE THREADS

REQUIREMENTS:

- MATERIAL: STEEL IN ACCORDANCE WITH AMS 6322-80
- FINISH: CADMIUM PLATE IN ACCORDANCE WITH AMS 2400-80
- HARDNESS: 26-32HRC
- DIMENSIONING AND TOLERANCING: DIMENSIONING AND TOLERANCING SHALL BE IN ACCORDANCE WITH ANSI Y14.5M
- THREADS: THREADS SHALL BE IN ACCORDANCE WITH FED-STD-H28/2. ACCEPTABILITY OF SCREW THREADS SHALL BE IN ACCORDANCE WITH FED-STD-H28/20, SYSTEM 22
- SURFACE TEXTURE: SURFACE TEXTURE SHALL BE IN ACCORDANCE WITH AS291-64
- MAGNETIC PARTICLE INSPECTION: MAGNETIC PARTICLE INSPECTION SHALL BE IN ACCORDANCE WITH AMS 2640-83
- MARKING: MATERIAL IDENTIFICATION AND MARKING IN ACCORDANCE WITH AMS 2800-76 DEPRESSED .010 MAX
- TOLERANCE: UNLESS OTHERWISE SPECIFIED, TOLERANCES SHALL BE LINEAR DIMENSIONS $\pm .010$, ANGULAR DIMENSIONS $\pm 5^\circ$
- EDGES: BREAK SHARP EDGES .003 - .015, UNLESS OTHERWISE SPECIFIED
- PART NUMBER: THE PART NUMBER SHALL CONSIST OF THE BASIC MS NUMBER FOLLOWED BY A DASH NUMBER FROM TABLE 1

EXAMPLE MS9307-001

— DASH NUMBER
— BASIC MS NUMBER

MS9307-001 INDICATES STUD, SHOULDERED AND STEPPED, HEXAGON WRENCHING, STEEL,
250-28 UNF-3A X 375-24 UNF-3A, LENGTH 1.406

P A NAVY-AS Other Cust ARMY-AR	INTERNATIONAL INTEREST	TITLE STUD, SHOULDERED AND STEPPED, HEXAGON WRENCHING, STEEL, .250-28 UNF-3A X .375-24 UNF-3A	MILITARY STANDARD MS9307
AIR FORCE-99	PROCUREMENT SPECIFICATION AMS 7452-73	SUPERSEDES:	PAGE 2 OF 3

DD FORM 1 MAY 73 672-1 (COORDINATED)

PREVIOUS EDITIONS OF THIS FORM ARE OBSOLETE

5307-0441

USER ACTIVITIES:

REVIEWER ACTIVITIES:
AIR FORCE-82
DLA-IS

This military standard is approved for use by all Departments and Agencies of the Department of Defense. Selection for all new engineering and design applications and for repetitive use shall be made from this document, when applicable.

APPROVED 24 FEB 60 REVISED (B) FOR CHANGES SEE PAGES 1,2 AND 3

FED SUP CLASS
5307

NOTES:

1. ALL DIMENSIONS ARE IN INCHES
2. DO NOT USE UNASSIGNED PART NUMBERS
3. IN THE EVENT OF A CONFLICT BETWEEN THE TEXT OF THIS STANDARD AND THE REFERENCES CITED HEREIN, THE TEXT OF THIS STANDARD SHALL TAKE PRECEDENCE.
4. REFERENCED GOVERNMENT (OR NONGOVERNMENT) DOCUMENTS OF THE ISSUE LISTED IN THAT ISSUE OF THE DEPARTMENT OF DEFENSE INDEX OF SPECIFICATIONS AND STANDARDS (DODISS) SPECIFIED IN THE SOLICITATION FORM A PART OF THIS STANDARD TO THE EXTENT SPECIFIED HEREIN
5. THIS STANDARD WAS DEVELOPED COOPERATIVELY WITH THE SAE AEROSPACE PROPULSION DIVISION
6. AS AND AMS ARE SAE PUBLICATIONS.

USER ACTIVITIES

REVIEWER ACTIVITIES
AIR FORCE-82
DLA-1S

This military standard is approved for use by all Departments and Agencies of the Department of Defense. Selection for all new engineering and design applications and for repetitive use shall be made from this document, when applicable.

APPROVED 24 FEB 60 REVISED (B) FOR CHANGES SEE PAGES 1, 2 AND 3

P A NAVY-AS Other Cust ARMY-AR AIR FORCE-99	INTERNATIONAL INTEREST	TITLE STUD, SHOULDERED AND STEPPED, HEXAGON WRENCHING, STEEL, .250-28 UNF-3A X .375-24 UNF-3A	MILITARY STANDARD MS9307
PROCUREMENT SPECIFICATION AMS 7452-73	SUPERSEDES:	PAGE 3 OF 3	

DD FORM 672-1 (COORDINATED)
1 MAY 73

PREVIOUS EDITIONS OF THIS FORM ARE OBSOLETE

5307-0441

U. S. GOVERNMENT PRINTING OFFICE: 1986 - 605-019/4384