

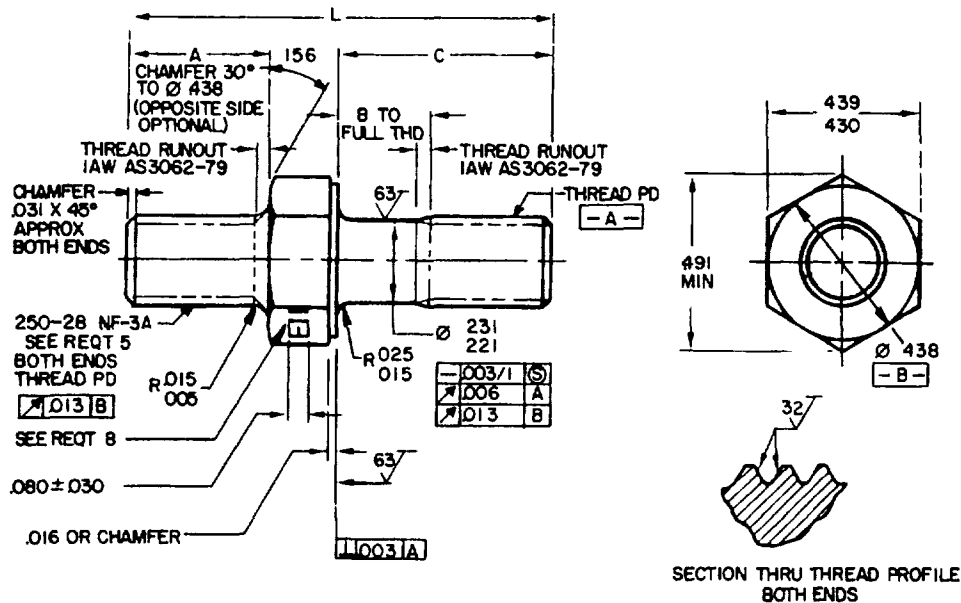
FED SUP CLASS  
5307

TABLE I DASH NUMBERS AND DIMENSIONS

DASH NUMBER	A	B + .000 - .060	C	L REF	APPROX WEIGHT LBS/100
-001	438	156	500	1.094	1.75
-002	438	156	562	1.156	1.83
-003	438	156	625	1.219	1.89
-004	438	156	688	1.281	1.98
-005	438	156	750	1.344	2.03
-006	438	156	812	1.406	2.12
-007	438	125	875	1.469	2.17
-008	438	188	938	1.531	2.26
-009	438	250	1.000	1.594	2.32
-010	438	312	1.062	1.656	2.40
-011	438	375	1.125	1.719	2.46
-012	438	438	1.188	1.781	2.54
-013	438	500	1.250	1.844	2.60
-014	438	562	1.312	1.906	2.68
-015	438	625	1.375	1.969	2.74
-016	438	688	1.438	2.031	2.83
-017	438	750	1.500	2.094	2.88
-018	438	812	1.562	2.156	2.97
-019	438	875	1.625	2.219	3.02
-020	438	938	1.688	2.281	3.11
-021	438	1.000	1.750	2.344	3.16
-022	438	1.062	1.812	2.406	3.25
-023	438	1.125	1.875	2.469	3.31
-024	438	1.188	1.938	2.531	3.39
-025	438	1.250	2.000	2.594	3.45
-050	500	156	500	1.156	1.83
-051	500	156	562	1.219	1.89
-052	500	156	625	1.281	1.98
-053	500	156	688	1.344	2.03
-054	500	156	750	1.406	2.12
-055	500	125	812	1.469	2.17
-056	500	188	875	1.531	2.26
-057	500	250	938	1.594	2.32
-058	500	312	1.000	1.656	2.40
-059	500	375	1.062	1.719	2.46
-060	500	438	1.125	1.781	2.54
-061	500	500	1.188	1.844	2.60
-062	500	562	1.250	1.906	2.68
-063	500	625	1.312	1.969	2.74
-064	500	688	1.375	2.031	2.83
-065	500	750	1.438	2.094	2.88
-066	500	812	1.500	2.156	2.97
-067	500	875	1.562	2.219	3.02
-068	500	938	1.625	2.281	3.11
-069	500	1.000	1.688	2.344	3.16
-070	500	1.062	1.750	2.406	3.25
-071	500	1.125	1.812	2.469	3.31
-072	500	1.188	1.875	2.531	3.39
-073	500	1.250	1.938	2.594	3.45
-074	500	2.000	2.000	2.656	3.53

(B) ENTIRE STANDARD REVISED

NAVY-AS Other Cust ARMY-AR AIR FORCE-99	INTERNATIONAL INTEREST	TITLE STUD, SHOULDERED, HEXAGON WRENCHING, STEEL, .250-28 UNF-3A X .250-28 UNF-3A	MILITARY STANDARD MS9305
PROCUREMENT SPECIFICATION AMS 7452-73	SUPERSEDES:	PAGE 1 OF 2	

DD FORM 672-1 (COORDINATED)

PREVIOUS EDITIONS OF THIS FORM ARE OBSOLETE

5307-0439

USER ACTIVITIES

REVIEWER ACTIVITIES  
AIR FORCE-82  
DLA-ISDISTRIBUTION STATEMENT A Approved for public release, distribution is unlimited  
This military standard is approved for use by all Departments and Agencies of the Department of Defense  
Selection for all new engineering and design applications and for repetitive use shall be made from this document when applicable

APPROVED 24 FEB 60 REVISED (B) 22 MAY 86

USER ACTIVITIES.

REVIEWER ACTIVITIES.  
AIR FORCE-82  
DLA-15

This military standard is approved for use by all Departments and Agencies of the Department of Defense. Selection for all new engineering and design applications and for repetitive use shall be made from this document, when applicable.

TABLE 1. DASH NUMBERS AND DIMENSIONS - CONTINUED

FED SUP CLASS  
5307

DASH NUMBER	A	B + .000 - .060	C	L REF	APPROX WEIGHT LBS/100	DASH NUMBER	A	B + .000 - .060	C	L REF	APPROX WEIGHT LBS/100
-100	.562	1/	.500	1.219	1.89	-150	.625	1/	.500	1.281	1.98
-101	.562	1/	.562	1.281	1.98	-151	.625	1/	.562	1.344	2.03
-102	.562	1/	.625	1.344	2.03	-152	.625	1/	.625	1.406	2.12
-103	.562	1/	.688	1.406	2.12	-153	.625	1/	.688	1.469	2.17
-104	.562	1/	.750	1.469	2.17	-154	.625	1/	.750	1.531	2.26
-105	.562	1/	.812	1.531	2.26	-155	.625	1/	.812	1.594	2.32
-106	.562	.125	.875	1.594	2.32	-156	.625	.125	.875	1.656	2.40
-107	.562	.188	.938	1.656	2.40	-157	.625	.188	.938	1.719	2.46
-108	.562	.250	1.000	1.719	2.46	-158	.625	.250	1.000	1.781	2.54
-109	.562	.312	1.062	1.781	2.54	-159	.625	.312	1.062	1.844	2.60
-110	.562	.375	1.125	1.844	2.60	-160	.625	.375	1.125	1.906	2.68
-111	.562	.438	1.188	1.906	2.68	-161	.625	.438	1.188	1.969	2.74
-112	.562	.500	1.250	1.969	2.74	-162	.625	.500	1.250	2.031	2.83
-113	.562	.562	1.312	2.031	2.83	-163	.625	.562	1.312	2.094	2.88
-114	.562	.625	1.375	2.094	2.88	-164	.625	.625	1.375	2.156	2.97
-115	.562	.688	1.438	2.156	2.97	-165	.625	.688	1.438	2.219	3.02
-116	.562	.750	1.500	2.219	3.02	-166	.625	.750	1.500	2.281	3.11
-117	.562	.812	1.562	2.281	3.11	-167	.625	.812	1.562	2.344	3.16
-118	.562	.875	1.625	2.344	3.16	-168	.625	.875	1.625	2.406	3.25
-119	.562	.938	1.688	2.406	3.25	-169	.625	.938	1.688	2.469	3.31
-120	.562	1.000	1.750	2.469	3.31	-170	.625	1.000	1.750	2.531	3.39
-121	.562	1.062	1.812	2.531	3.39	-171	.625	1.062	1.812	2.594	3.45
-122	.562	1.125	1.875	2.594	3.45	-172	.625	1.125	1.875	2.656	3.53
-123	.562	1.188	1.938	2.656	3.53	-173	.625	1.188	1.938	2.719	3.59
-124	.562	1.250	2.000	2.719	3.59	-174	.625	1.250	2.000	2.781	3.67

1/ THREAD TO HEAD MAXIMUM TWO INCOMPLETE THREADS

## REQUIREMENTS:

- MATERIAL:** STEEL IN ACCORDANCE WITH AMS 6322-80
- FINISH:** CADMIUM PLATE IN ACCORDANCE WITH AMS 2400-80
- HARDNESS:** 26-32HRC
- DIMENSIONING AND TOLERANCING:** DIMENSIONING AND TOLERANCING SHALL BE IN ACCORDANCE WITH ANSI Y14.5M
- THREADS:** THREADS SHALL BE IN ACCORDANCE WITH FED-STD-H28/2. ACCEPTABILITY OF SCREW THREADS SHALL BE IN ACCORDANCE WITH FED-STD-H28/20, SYSTEM 22
- SURFACE TEXTURE:** SURFACE TEXTURE SHALL BE IN ACCORDANCE WITH AS291-64
- MAGNETIC PARTICLE INSPECTION:** MAGNETIC PARTICLE INSPECTION SHALL BE IN ACCORDANCE WITH AMS 2640-83
- MARKING:** MATERIAL IDENTIFICATION AND MARKING IN ACCORDANCE WITH AMS 2800-76 DEPRESSED .010 MAX
- TOLERANCE:** UNLESS OTHERWISE SPECIFIED, TOLERANCES SHALL BE LINEAR DIMENSIONS  $\pm .010$ , ANGULAR DIMENSIONS  $\pm 5^\circ$
- EDGES:** BREAK SHARP EDGES .003 - .015, UNLESS OTHERWISE SPECIFIED
- PART NUMBER:** THE PART NUMBER SHALL CONSIST OF THE BASIC MS NUMBER FOLLOWED BY A DASH NUMBER FROM TABLE 1

EXAMPLE. MS9305-001

— DASH NUMBER  
— BASIC MS NUMBER

MS9305-001 INDICATES STUD, SHOULDERED, HEXAGON WRENCHING, STEEL,  
250-28 UNF-3A X 250-28 UNF-3A, LENGTH 1.094

## NOTES:

- ALL DIMENSIONS ARE IN INCHES.
- DO NOT USE UNASSIGNED PART NUMBERS.
- IN THE EVENT OF A CONFLICT BETWEEN THE TEXT OF THIS STANDARD AND THE REFERENCES CITED HEREIN, THE TEXT OF THIS STANDARD SHALL TAKE PRECEDENCE.
- REFERENCED GOVERNMENT (OR NONGOVERNMENT) DOCUMENTS OF THE ISSUE LISTED IN THAT ISSUE OF THE DEPARTMENT OF DEFENSE INDEX OF SPECIFICATIONS AND STANDARDS (DODISS) SPECIFIED IN THE SOLICITATION FORM A PART OF THIS STANDARD TO THE EXTENT SPECIFIED HEREIN.
- THIS STANDARD WAS DEVELOPED COOPERATIVELY WITH THE SAE AEROSPACE PROPULSION DIVISION.
- AS AND AMS ARE SAE PUBLICATIONS.

NAVY-AS Other Cost ARMY-AR AIR FORCE-99	INTERNATIONAL INTEREST	TITLE <b>STUD, SHOULDERED, HEXAGON WRENCHING, STEEL, 250-28 UNF-3A X 250-28 UNF-3A</b>	<b>MILITARY STANDARD</b> <b>MS9305</b>
PROCUREMENT SPECIFICATION AMS 7452-73		SUPERSEDES:	PAGE 2 OF 2

APPROVED 24 FEB 60 REVISED (B) FOR CHANGES SEE PAGES 1 AND 2