

FED SUP CLASS
5307

USER ACTIVITIES.

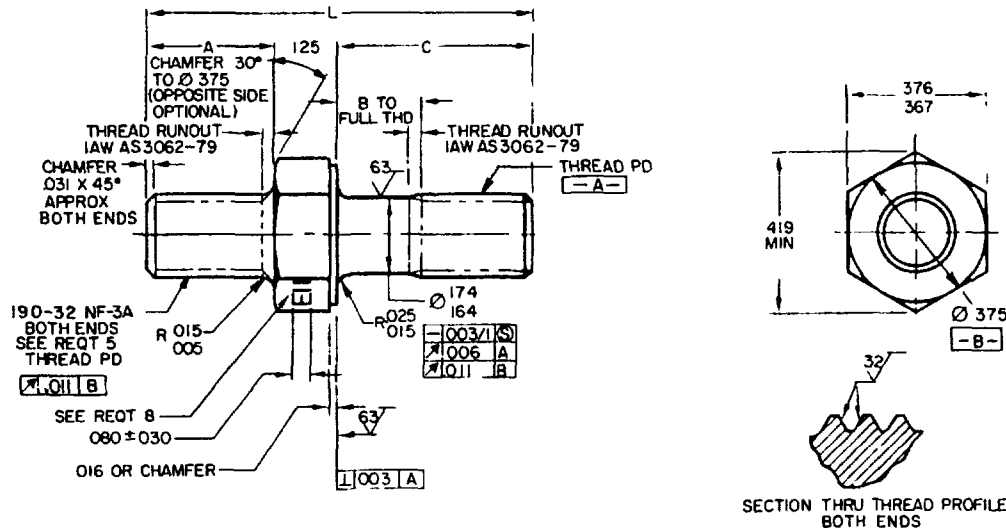


TABLE 1 DASH NUMBERS AND DIMENSIONS

DASH NUMBER	A	B + .000 - .060	C	L REF	APPROX WEIGHT LBS/100	DASH NUMBER	A	B + .000 - .060	C	L REF	APPROX WEIGHT LBS/100
-001	375	1/	375	.875	90	-050	430	1/	375	938	96
-002	375	1/	438	938	96	-051	438	1/	438	1 000	99
-003	375	1/	500	1 000	.99	-052	438	1/	500	1 062	1 04
-004	375	1/	562	1 062	1 04	-053	438	1/	562	1 125	1 07
-005	375	1/	625	1 125	1 07	-054	438	1/	625	1 188	1 10
-006	375	1/	688	1 188	1 10	-055	438	1/	688	1 250	1 19
-007	375	125	750	1 250	1.19	-056	438	125	750	1 312	1 19
-008	375	188	812	1 312	1.19	-057	430	188	812	1 375	1 24
-009	375	250	.875	1 375	1 24	-058	438	250	875	1 438	1 27
-010	375	312	938	1 438	1 27	-059	438	312	938	1 500	1 33
-011	375	375	1 000	1 500	1 33	-060	438	375	1 000	1 562	1 35
-012	375	438	1 062	1 562	1.35	-061	438	438	1 062	1 625	1.38
-013	375	500	1 125	1 625	1.38	-062	438	500	1 125	1 688	1.44
-014	375	562	1 188	1 688	1 44	-063	438	562	1 188	1 750	1.47
-015	375	625	1 250	1 750	1.47	-064	438	625	1 250	1 812	1.52
-016	375	688	1 312	1 812	1 52	-065	438	688	1 312	1 875	1 55
-017	375	750	1 375	1 875	1 55	-066	438	750	1 375	1 938	1 61
-018	375	812	1 438	1 938	1 61	-067	438	812	1 438	2 000	1 64
-019	375	.875	1 500	2 000	1 64	-068	438	875	1 500	2 062	1 69
-020	375	938	1 562	2 062	1 69	-069	438	938	1 562	2 125	1 72
-021	375	1 000	1 625	2 125	1 72	-070	438	1 000	1 625	2 188	1 75
-022	375	1 062	1 688	2 188	1 75	-071	438	1 062	1 688	2 250	1 81
-023	375	1 125	1 750	2 250	1 81	-072	438	1 125	1 750	2 312	1 83

(B) ENTIRE STANDARD REVISED

P A NAVY-AS Other Cust ARMY-AR AIR FORCE-99	INTERNATIONAL INTEREST	TITLE STUD, SHOULDERED, HEXAGON WRENCHING, STEEL, 190-32 NF-3A X 190-32 NF-3A	MILITARY STANDARD MS9303
PROCUREMENT SPECIFICATION AMS 7452-73	SUPERSEDES:	PAGE 1 OF 2	

USER ACTIVITIES.

REVIEWER ACTIVITIES.
AIR FORCE-82
DLA-1S

This military standard is approved for use by all Departments and Agencies of the Department of Defense. Selection for all new engineering and design applications and for repetitive use shall be made from this document, when applicable.

TABLE I DASH NUMBERS AND DIMENSIONS - CONTINUED

FED SUP CLASS
5307

DASH NUMBER	A	B +.000 -.060	C	L REF	APPROX WEIGHT LBS/100	DASH NUMBER	A	B +.000 -.060	C	L REF	APPROX WEIGHT LBS/100
-100	.500	1/	.375	1.000	99	-150	.562	1/	.375	1.062	1.04
-101	.500	1/	.438	1.062	1.04	-151	.562	1/	.438	1.125	1.07
-102	.500	1/	.500	1.125	1.07	-152	.562	1/	.500	1.188	1.10
-103	.500	1/	.562	1.188	1.10	-153	.562	1/	.562	1.250	1.19
-104	.500	1/	.625	1.250	1.19	-154	.562	1/	.625	1.312	1.19
-105	.500	1/	.688	1.312	1.19	-155	.562	1/	.688	1.375	1.24
-106	.500	.125	.750	1.375	1.24	-156	.562	.125	.750	1.438	1.27
-107	.500	.188	.812	1.438	1.27	-157	.562	.188	.812	1.500	1.33
-108	.500	.250	.875	1.500	1.33	-158	.562	.250	.875	1.562	1.35
-109	.500	.312	.938	1.562	1.35	-159	.562	.312	.938	1.625	1.38
-110	.500	.375	1.000	1.625	1.38	-160	.562	.375	1.000	1.688	1.44
-111	.500	.438	1.062	1.688	1.44	-161	.562	.438	1.062	1.750	1.47
-112	.500	.500	1.125	1.750	1.47	-162	.562	.500	1.125	1.812	1.52
-113	.500	.562	1.188	1.812	1.52	-163	.562	.562	1.188	1.875	1.55
-114	.500	.625	1.250	1.875	1.55	-164	.562	.625	1.250	1.938	1.61
-115	.500	.688	1.312	1.938	1.61	-165	.562	.688	1.312	2.000	1.64
-116	.500	.750	1.375	2.000	1.64	-166	.562	.750	1.375	2.062	1.69
-117	.500	.812	1.438	2.062	1.69	-167	.562	.812	1.438	2.125	1.72
-118	.500	.875	1.500	2.125	1.72	-168	.562	.875	1.500	2.188	1.75
-119	.500	.938	1.562	2.188	1.75	-169	.562	.938	1.562	2.250	1.81
-120	.500	1.000	1.625	2.250	1.81	-170	.562	1.000	1.625	2.312	1.83
-121	.500	1.062	1.688	2.312	1.83	-171	.562	1.062	1.688	2.375	1.89
-122	.500	1.125	1.750	2.375	1.89	-172	.562	1.125	1.750	2.438	1.92

1/ THREAD TO HEAD MAXIMUM TWO INCOMPLETE THREADS

REQUIREMENTS:

- MATERIAL** STEEL IN ACCORDANCE WITH AMS 6322-80
- FINISH** CADMIUM PLATE IN ACCORDANCE WITH AMS 2400-80
- HARDNESS** 26-32HRC
- DIMENSIONING AND TOLERANCING** DIMENSIONING AND TOLERANCING SHALL BE IN ACCORDANCE WITH ANSI Y14.5M
- THREADS** THREADS SHALL BE IN ACCORDANCE WITH FED-STD-H28/2 ACCEPTABILITY OF SCREW THREADS SHALL BE IN ACCORDANCE WITH FED-STD-H28/20, SYSTEM 22
- SURFACE TEXTURE** SURFACE TEXTURE SHALL BE IN ACCORDANCE WITH AS291-64
- MAGNETIC PARTICLE INSPECTION** MAGNETIC PARTICLE INSPECTION SHALL BE IN ACCORDANCE WITH AMS 2640-83
- MARKING** MATERIAL IDENTIFICATION AND MARKING IN ACCORDANCE WITH AMS 2800-76 DEPRESSED .010 MAX
- TOLERANCE** UNLESS OTHERWISE SPECIFIED, TOLERANCES SHALL BE LINEAR DIMENSIONS $\pm .010$, ANGULAR DIMENSIONS $\pm 5^\circ$
- EDGES** BREAK SHARP EDGES .003 - .015, UNLESS OTHERWISE SPECIFIED
- PART NUMBER** THE PART NUMBER SHALL CONSIST OF THE BASIC MS NUMBER FOLLOWED BY A DASH NUMBER FROM TABLE I

EXAMPLE: MS9303-001

— DASH NUMBER
— BASIC MS NUMBER

MS9303-001 INDICATES STUD, SHOULDERED, HEXAGON WRENCHING, STEEL,
190-32 NF-3A X 190-32 NF-3A, LENGTH 875

NOTES.

- ALL DIMENSIONS ARE IN INCHES
- DO NOT USE UNASSIGNED PART NUMBERS
- IN THE EVENT OF A CONFLICT BETWEEN THE TEXT OF THIS STANDARD AND THE REFERENCES CITED HEREIN, THE TEXT OF THIS STANDARD SHALL TAKE PRECEDENCE
- REFERENCED GOVERNMENT (OR NONGOVERNMENT) DOCUMENTS OF THE ISSUE LISTED IN THAT ISSUE OF THE DEPARTMENT OF DEFENSE INDEX OF SPECIFICATIONS AND STANDARDS (DODISS) SPECIFIED IN THE SOLICITATION FORM A PART OF THIS STANDARD TO THE EXTENT SPECIFIED HEREIN
- THIS STANDARD WAS DEVELOPED COOPERATIVELY WITH THE SAE AEROSPACE PROPULSION DIVISION
- AS AND AMS ARE SAE PUBLICATIONS

NAVY-AS Other Cust ARMY-AR AIR FORCE-99	INTERNATIONAL INTEREST	TITLE STUD, SHOULDERED, HEXAGON WRENCHING, STEEL, .190-32 NF-3A X .190-32 NF-3A	MILITARY STANDARD MS9303
PROCUREMENT SPECIFICATION AMS 7452-73	SUPERSEDES:	PAGE 2 OF 2	