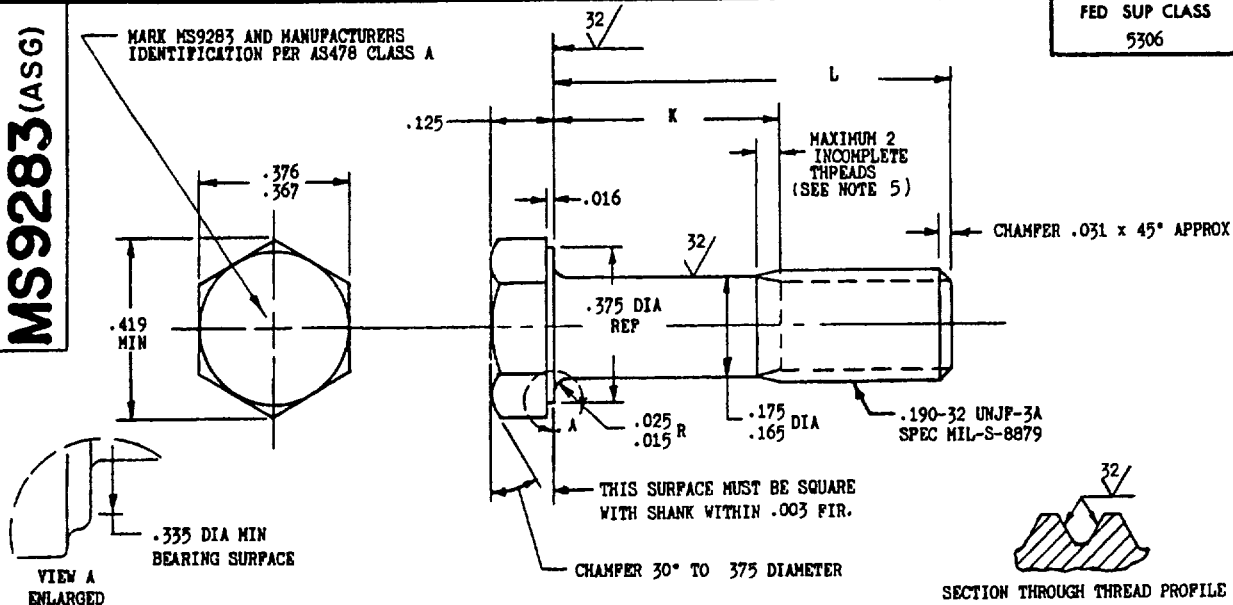


**MS9283(ASG)**MARK MS9283 AND MANUFACTURERS  
IDENTIFICATION PER AS478 CLASS AFED SUP CLASS  
5306

PART NUMBER	L	K	APPROX WEIGHT LB/100	PART NUMBER	L	K	APPROX WEIGHT LB/100
MS9283-04	.375	.072-.092	.66	MS9283-31	2.375	1.685-1.745	1.95
MS9283-05	.438	.072-.092	.70	MS9283-32	2.500	1.810-1.870	2.03
MS9283-06	.500	.072-.092	.74	MS9283-33	2.625	1.935-1.995	2.11
MS9283-07	.562	.072-.092	.78	MS9283-34	2.750	2.060-2.120	2.19
MS9283-08	.625	.072-.092	.82	MS9283-35	2.875	2.185-2.245	2.27
MS9283-09	.688	.072-.092	.86	MS9283-36	3.000	2.310-2.370	2.35
MS9283-10	.750	.072-.120	.90	MS9283-37	3.125	2.435-2.495	2.43
MS9283-11	.812	.122-.182	.94	MS9283-38	3.250	2.560-2.620	2.51
MS9283-12	.875	.185-.245	.98	MS9283-39	3.375	2.685-2.745	2.59
MS9283-13	.938	.248-.308	1.02	MS9283-40	3.500	2.810-2.870	2.67
MS9283-14	1.000	.310-.370	1.07	MS9283-41	3.625	2.935-2.995	2.75
MS9283-15	1.062	.372-.432	1.11	MS9283-42	3.750	3.060-3.120	2.83
MS9283-16	1.125	.435-.495	1.15	MS9283-43	3.875	3.185-3.245	2.91
MS9283-17	1.188	.498-.558	1.19				
MS9283-18	1.250	.560-.620	1.23				
MS9283-19	1.312	.622-.682	1.27				
MS9283-20	1.375	.685-.745	1.31				
MS9283-21	1.438	.748-.808	1.35				
MS9283-22	1.500	.810-.870	1.39				
MS9283-23	1.562	.872-.932	1.43				
MS9283-24	1.625	.935-.995	1.47				
MS9283-25	1.688	.998-1.058	1.51				
MS9283-26	1.750	1.060-1.120	1.55				
MS9283-27	1.875	1.185-1.245	1.63				
MS9283-28	2.000	1.310-1.370	1.71				
MS9283-29	2.125	1.435-1.495	1.79				
MS9283-30	2.250	1.560-1.620	1.87				

- HEAD TO SHANK FILLET SHALL BE COLD ROLLED AFTER HEAT TREATMENT TO REMOVE ALL VISUAL EVIDENCE OF GRINDING OR TOOL MARKS.
- SHANK SHALL BE STRAIGHT WITHIN .003 PER INCH OF BOLT LENGTH.
- THE CONCENTRICITY OF THREAD PD IN RELATION TO THE SHANK SHALL BE WITHIN .006 FIR.
- THE CONCENTRICITY OF THE SHANK IN RELATION TO THE WASHER FACE DIAMETER AND HEXAGON SHALL BE WITHIN .011 FIR.
- INCOMPLETE THREADS NOT TO ENTER FILLET.
- MATERIAL: STEEL AMS 6322.
- HARDNESS: ROCKWELL C26-32.
- FINISH: BLACK OXIDE TREATMENT AMS 2485.
- MANUFACTURING SPECIFICATION: AMS 7452 EXCEPT HEAD MUST BE UPSET.
- MAGNETIC PARTICLE INSPECTION PER AMS 2640.
- SURFACE ROUGHNESS: AS 291. UNLESS OTHERWISE SPECIFIED SURFACES TO BE 125 MICROINCHES EXCEPT HEXAGON.
- BREAK SHARP EDGES .003-.015 UNLESS OTHERWISE SPECIFIED.
- DIMENSIONS IN INCHES. UNLESS OTHERWISE SPECIFIED, TOLERANCES LINEAR DIMENSIONS  $\pm .010$ , ANGULAR DIMENSIONS  $\pm 5^\circ$ .
- DO NOT USE UNASSIGNED PART NUMBERS.

AS & AMS ARE SOCIETY OF AUTOMOTIVE ENGINEERS, INC. PUBLICATIONS.  
THIS STANDARD WAS DEVELOPED COOPERATIVELY WITH THE ENGINE AND PROPELLER UTILITY PARTS COMMITTEE OF THE SAE.

P.A. USAF - 11

TITLE

Other Cust  
Navy - WPBOLT, MACHINE-STEEL AMS 6322, BLACK OXIDE,  
HEXAGON HEAD, .190-32 UNJF-3A

MILITARY STANDARD

**MS9283** (ASG)PROCUREMENT SPECIFICATION  
NONE

SUPERSEDES:

SHEET 1 OF 1

Review activities:  
USAF - 11  
Navy - WP

This standard was approved by the Department of the Air Force (11) and the Department of the Navy and is mandatory for use by their activity. All other military activities are required to employ this standard where suitable.

REVISED

APPROVED 24 Sep 65