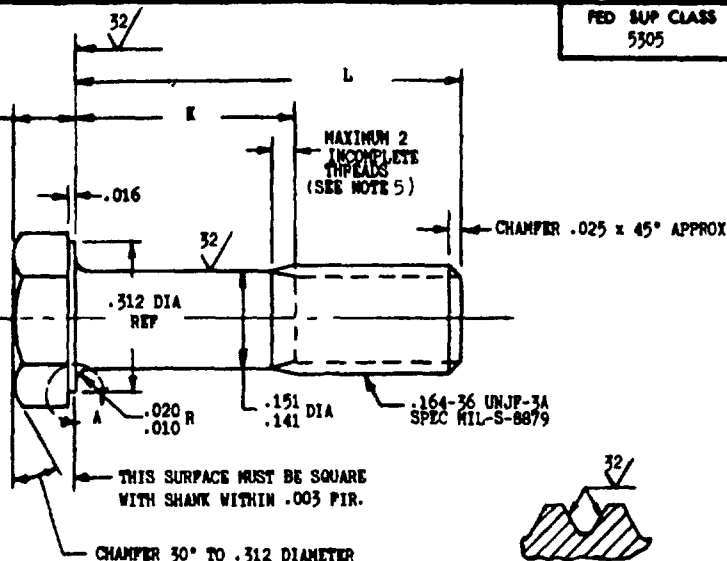


**MS9282**MARK MS9282 AND MANUFACTURERS  
IDENTIFICATION PER AS478 CLASS A.272 DIA MIN  
BEARING SURFACE

SECTION THROUGH THREAD PROFILE

PART NUMBER	L	K	APPROX WEIGHT LB/100	PART NUMBER	L	K	APPROX WEIGHT LB/100
MS9282-03	.312	.062-.082	.43				
MS9282-04	.375	.062-.082	.46				
MS9282-05	.438	.062-.082	.49				
MS9282-06	.500	.062-.082	.53				
MS9282-07	.562	.062-.082	.56				
MS9282-08	.625	.062-.082	.59				
MS9282-09	.688	.062-.110	.62				
MS9282-10	.750	.112-.172	.65				
MS9282-11	.812	.174-.234	.69				
MS9282-12	.875	.237-.297	.72				
MS9282-13	.938	.300-.360	.75				
MS9282-14	1.000	.362-.422	.78				
MS9282-15	1.062	.424-.484	.81				
MS9282-16	1.125	.487-.547	.84				
MS9282-17	1.188	.550-.610	.88				
MS9282-18	1.250	.612-.672	.91				
MS9282-19	1.312	.674-.734	.94				
MS9282-20	1.375	.737-.797	.97				
MS9282-21	1.438	.800-.860	1.00				
MS9282-22	1.500	.862-.922	1.04				
MS9282-23	1.562	.924-.984	1.07				
MS9282-24	1.625	.987-1.047	1.10				
MS9282-25	1.688	1.050-1.110	1.13				
MS9282-26	1.750	1.112-1.172	1.16				
MS9282-27	1.875	1.237-1.297	1.23				
MS9282-28	2.000	1.362-1.422	1.29				

**(A) INACTIVE FOR DESIGN AFTER 26 OCTOBER 1972.**  
**NO SUPERSEDING STANDARD.**

- HEAD TO SHANK FILLET SHALL BE COLD ROLLED AFTER HEAT TREATMENT TO REMOVE ALL VISUAL EVIDENCE OF GRINDING OR TOOL MARKS.
- SHANK SHALL BE STRAIGHT WITHIN .003 PER INCH OF SCREW LENGTH.
- THE CONCENTRICITY OF THREAD PD IN RELATION TO THE SHANK SHALL BE WITHIN .006 FIR.
- THE CONCENTRICITY OF THE SHANK IN RELATION TO THE WASHER FACE DIAMETER AND HEXAGON SHALL BE WITHIN .010 FIR.
- INCOMPLETE THREADS NOT TO ENTER FILLET.
- MATERIAL: STEEL AMS 6322.
- HARDNESS: ROCKWELL C36-32.
- FINISH: BLACK OXIDE TREATMENT AMS 2485.
- MANUFACTURING SPECIFICATION: AMS 7452 EXCEPT HEAD MUST BE UPSET.
- MAGNETIC PARTICLE INSPECTION PER AMS 2640.
- SURFACE ROUGHNESS: AS 291. UNLESS OTHERWISE SPECIFIED SURFACES TO BE 125 MICROINCHES EXCEPT HEXAGON.
- BREAK SHARP EDGES .003-.015 UNLESS OTHERWISE SPECIFIED.
- DIMENSIONS IN INCHES. UNLESS OTHERWISE SPECIFIED, TOLERANCES: LINEAR DIMENSIONS  $\pm .010$ , ANGULAR DIMENSIONS  $\pm 5^\circ$ .
- DO NOT USE UNASSIGNED PART NUMBERS.

AS 4 AND AMS ARE SOCIETY OF AUTOMOTIVE ENGINEERS, INC. PUBLICATIONS.  
 THIS STANDARD WAS DEVELOPED COOPERATIVELY WITH THE ENGINE AND PROPELLER UTILITY PARTS COMMITTEE OF THE SAE.

P.A. <b>UNCL - 11</b>	TITLE	<b>MILITARY STANDARD</b>
Other Cost Rev - AS	SCREW, MACHINE-STEEL AMS 6322, BLACK OXIDE, HEXAGON HEAD, .164-36 UNJF-3A	<b>MS9282</b>
PROCUREMENT SPECIFICATION FORM	SUPERSEDES:	SHEET 1 OF 1

DD FORM 672-1 (Limited circulation) E-25-144

PREVIOUS EDITIONS OF THIS FORM ARE OBSOLETE

☆ U S GOVERNMENT PRINTING OFFICE 1981 - 703-023/6977

Review activities:  
 USAF - 11  
 Navy - 68

This standard has been approved by the Department of the Air Force (11) and the Department of the Navy (68) and is hereby approved for use by all military departments. All other military departments are required to comply with standard when suitable.

APPROVED 24 Sept 65  
 (A) 26 Oct 72  
 REVISED