

INCH-POUND

MS9281B
27 OCTOBER 1995
SUPERSEDING
MS9281A
26 OCTOBER 1972

MILITARY SPECIFICATION SHEET

SCREW, MACHINE-STEEL AMS 6322,
BLACK OXIDE, HEXAGON HEAD,
.138-40 UNJF-3A

THIS SPECIFICATION IS APPROVED FOR USE BY ALL DEPARTMENTS
AND AGENCIES OF THE DEPARTMENT OF DEFENSE.

THE REQUIREMENTS FOR ACQUIRING THE PRODUCT DESCRIBED HEREIN SHALL CONSIST
OF THIS SPECIFICATION SHEET AND THE ISSUE OF THE FOLLOWING DOCUMENT
LISTED IN THAT ISSUE OF THE DEPARTMENT OF DEFENSE INDEX OF SPECIFICATIONS
AND STANDARDS (DODISS) SPECIFIED IN THE SOLICITATION (SEE REQT 13)

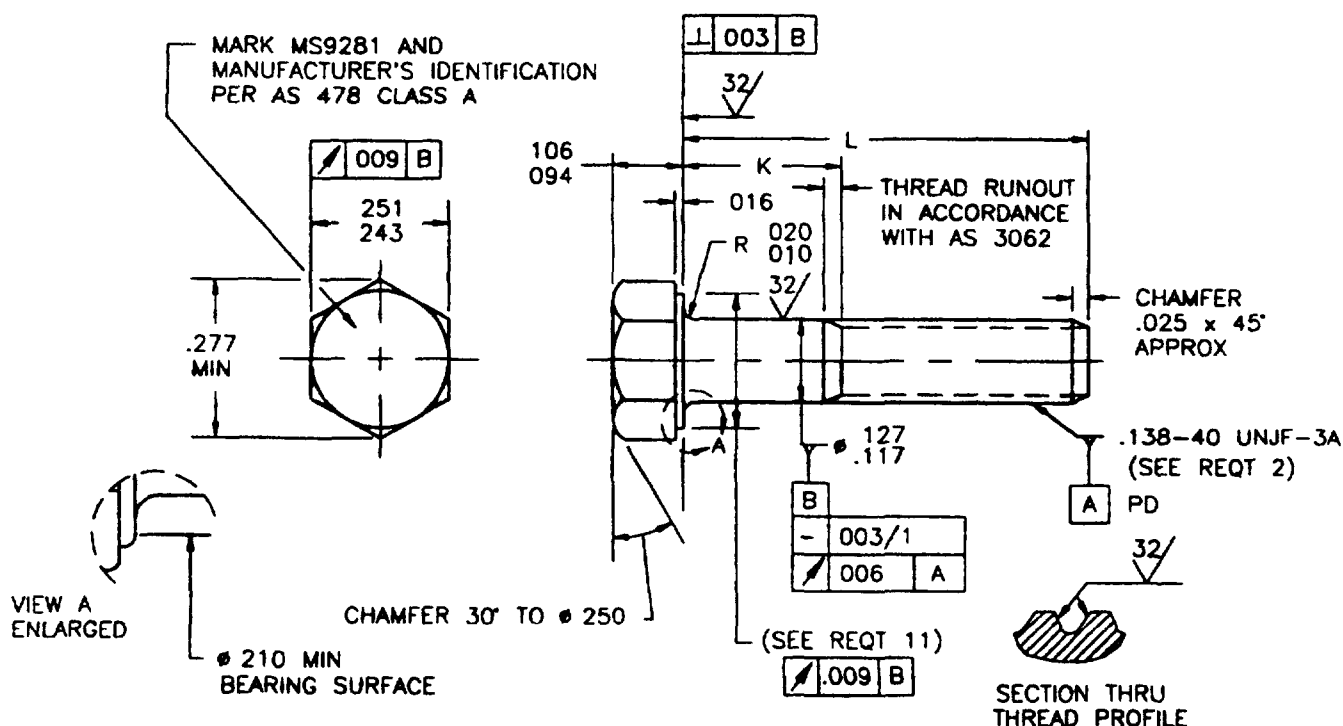


TABLE I. DASH NUMBERS AND DIMENSIONS

DASH NUMBER	L	K	APPROX WEIGHT LB/100
-02	.250	.058-.078	.25
-03	.312	.058-.078	.27
-04	.375	.058-.078	.30
-05	.438	.058-.078	.32
-06	.500	.058-.078	.34
-07	.562	.058-.078	.37
-08	.625	.058-.099	.39
-09	.688	.102-.162	.42
-10	.750	.164-.224	.44
-11	.812	.226-.286	.46
-12	.875	.269-.349	.49
-13	.938	.352-.412	.51
-14	1.000	.414-.474	.53
-15	1.062	.476-.536	.56

DASH NUMBER	L	K	APPROX WEIGHT LB/100
-16	1.125	.539-.599	.56
-17	1.188	.602-.662	.61
-18	1.250	.664-.724	.63
-19	1.312	.726-.786	.65
-20	1.375	.789-.849	.68
-21	1.438	.852-.912	.70
-22	1.500	.914-.974	.72

(B) ENTIRE DOCUMENT REVISED

