

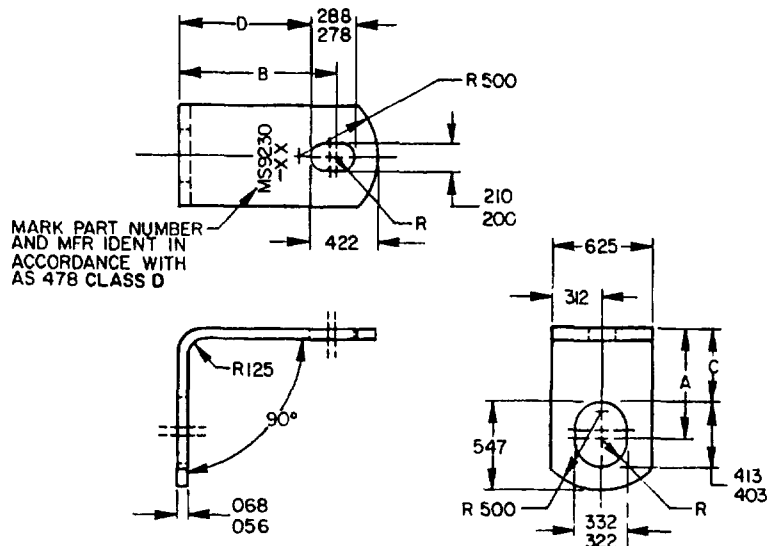
FED SUP CLASS
5340

TABLE 1 DASH NUMBERS AND DIMENSIONS

DASH NO	A REF	B REF	C ± .010	D ± .010	APPROX WEIGHT LB/100
-01	562	500	.328	.328	1.225
-02	562	.625	.328	.453	1.362
-03	562	.750	.328	.578	1.499
-04	562	.875	.328	.703	1.636
-05	562	1.000	.328	.828	1.773
-06	562	1.250	.328	1.078	2.047
-07	.562	1.500	.328	1.328	2.321
-10	688	500	.453	.328	1.362
-11	688	.625	.453	.453	1.499
-12	688	.750	.453	.578	1.636
-13	688	.875	.453	.703	1.773
-14	688	1.000	.453	.828	1.910
-15	688	1.250	.453	1.078	2.184
-16	688	1.500	.453	1.328	2.458
-20	.812	500	.578	.328	1.499
-21	812	.625	.578	.453	1.636
-22	812	.750	.578	.578	1.773
-23	812	.875	.578	.703	1.910
-24	812	1.000	.578	.828	2.047
-25	812	1.250	.578	1.078	2.321
-26	812	1.500	.578	1.328	2.596
-30	938	500	.703	.328	1.636
-31	938	.625	.703	.453	1.773
-32	938	.750	.703	.578	1.910
-33	938	.875	.703	.703	2.047
-34	938	1.000	.703	.828	2.184
-35	938	1.250	.703	1.078	2.458
-36	938	1.500	.703	1.328	2.732

DASH NO	A REF	B REF	C ± .010	D ± .010	APPROX WEIGHT LB/100
-40	1.062	500	.828	.328	1.773
-41	1.062	.625	.828	.453	1.910
-42	1.062	.750	.828	.578	2.047
-43	1.062	.875	.828	.703	2.184
-44	1.062	1.000	.828	.828	2.321
-45	1.062	1.250	.828	1.078	2.596
-46	1.062	1.500	.828	1.328	2.870
-50	1.312	500	1.078	.328	2.047
-51	1.312	.625	1.078	.453	2.184
-52	1.312	.750	1.078	.578	2.321
-53	1.312	.875	1.078	.703	2.458
-54	1.312	1.000	1.078	.828	2.596
-55	1.312	1.250	1.078	1.078	2.870
-56	1.312	1.500	1.078	1.328	3.144
-60	1.562	.500	1.328	.328	2.321
-61	1.562	.625	1.328	.453	2.458
-62	1.562	.750	1.328	.578	2.596
-63	1.562	.875	1.328	.703	2.732
-64	1.562	1.000	1.328	.828	2.870
-65	1.562	1.250	1.328	1.078	3.144
-66	1.562	1.500	1.328	1.328	3.418
-70	1.812	500	1.578	.328	2.596
-71	1.812	.625	1.578	.453	2.732
-72	1.812	.750	1.578	.578	2.870
-73	1.812	.875	1.578	.703	3.007
-74	1.812	1.000	1.578	.828	3.144
-75	1.812	1.250	1.578	1.078	3.418
-76	1.812	1.500	1.578	1.328	3.692

INACTIVE FOR DESIGN AFTER 22 NOVEMBER 1966. USE MS9602.
INTERCHANGEABILITY RELATIONSHIP MS9230 INDIVIDUAL PART NUMBERS
MAY BE REPLACED BY ONE OR MORE PART NUMBERS OF MS9602 SELECTED
WITHIN THE SLOTTED HOLE DIMENSIONAL RANGE OF THE SUPERSEDED
STANDARD THE INACTIVATED MS9230 PARTS SHALL NOT BE USED TO
REPLACE THE SUPERSEDING MS9602 PARTS.

© ENTIRE STANDARD REVISED

PA	NAVY-AS	INTERNATIONAL INTEREST	TITLE	MILITARY STANDARD
Other Cont:	ARMY-AR		BRACKET, ANGLE, 90° .190 x .312 BOLT	MS9230
AIR FORCE-82				
PROCUREMENT SPECIFICATION	SUPERSEDES		PAGE	OF
NONE			1	2

DD FORM 672-1 (COORDINATED)

PREVIOUS EDITIONS OF THIS FORM ARE OBSOLETE 5340-1742

USER ACTIVITIES

REVIEWER ACTIVITIES
DLA-1S

DISTRIBUTION STATEMENT A Approved for public release; distribution is unlimited
This military standard is approved for use by all Departments and Agencies of the Department of Defense
Selection for all new engineering and design applications and for repetitive use shall be made from this document when applicable

AMSC N/A

REVISED 10 FEB 59
APPROVED 18 JUN 87

USER ACTIVITIES

REVIEWER ACTIVITIES
DLA-15

This military standard is approved for use by all Departments and Agencies of the Department of Defense. Selection for all new engineering and design applications and for repetitive use shall be made from this document when applicable

FED SUP CLASS
5340

REQUIREMENTS

- 1 MATERIAL CORROSION RESISTANT STEEL IN ACCORDANCE WITH AMS 5504
- 2 HEAT TREATMENT AND CLEANING HEAT TREATMENT AND CLEANING IN ACCORDANCE WITH AMS 2550
- 3 HARDNESS 30-38 HRC.
- 4 DIMENSIONING AND TOLERANCING DIMENSIONING AND TOLERANCING SHALL BE IN ACCORDANCE WITH ANSI Y14.5M
- 5 TOLERANCES UNLESS OTHERWISE SPECIFIED, TOLERANCES SHALL BE FOR LINEAR DIMENSIONS $\pm .015$, ANGULAR DIMENSIONS $\pm 2^\circ$
- 6 PART NUMBER THE PART NUMBER SHALL CONSIST OF THE BASIC MS NUMBER FOLLOWED BY A DASH NUMBER FROM TABLE I

EXAMPL. MS9230-02

DASH NUMBER

BASIC MS NUMBER

MS9230-02 INDICATES - BRACKET, 90° ANGLE, LENGTH A, 562, LENGTH B, 625

NOTES

- 1 ALL DIMENSIONS ARE IN INCHES
2. DO NOT USE UNASSIGNED DASH NUMBERS
- 3 REMOVE BURRS AND BREAK SHARP EDGES
- 4 IN THE EVENT OF A CONFLICT BETWEEN THE TEXT OF THIS STANDARD AND THE REFERENCES CITED HEREIN, THE TEXT OF THIS STANDARD SHALL TAKE PRECEDENCE
- 5 REFERENCED GOVERNMENT (OR NON-GOVERNMENT) DOCUMENTS OF THE ISSUE LISTED IN THAT ISSUE OF THE DEPARTMENT OF DEFENSE INDEX OF SPECIFICATIONS AND STANDARDS (DODISS) SPECIFIED IN THE SOLICITATION, FORM A PART OF THIS STANDARD TO THE EXTENT SPECIFIED HEREIN.
- 6 AS AND AMS ARE SOCIETY OF AUTOMOTIVE ENGINEERS, INC PUBLICATIONS
- 7 THIS STANDARD WAS DEVELOPED COOPERATIVELY WITH THE ENGINE AND PROPELLER UTILITY PARTS COMMITTEE OF THE SAE

APPROVED 10 FEB 59 REVISED (C) FOR CHANGES SEE PAGES 1 AND 2

PA	NAVY-AS	INTERNATIONAL INTEREST	TITLE	MILITARY STANDARD
Other Cust	ARMY-AR		BRACKET, ANGLE, 90° .190 x .312 BOLT	MS9230
AIR FORCE-82				
PROCUREMENT SPECIFICATION	SUPERSEDES		PAGE	OF
NONE			2	2

DD FORM 672-1 (COORDINATED)

PREVIOUS EDITIONS OF THIS FORM ARE OBSOLETE

5340-1742