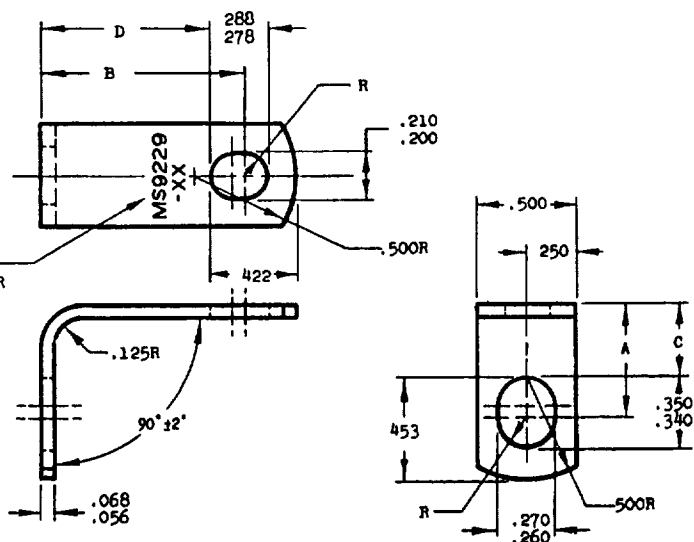


NOTES: When Government drawings, specifications, or other data are used for any purpose other than in connection with a definitely related Government procurement operation the United States Government thereby incurs no responsibility, nor any obligation whatsoever, and the fact that the Government may have furnished, furnished, or in any way supplied the said drawings, specifications, or other data is not to be regarded by implication or otherwise as in any manner licensing the holder of any other patent or copyright, or conferring any rights or protection to manufacture, use, or sell any patented invention that may in any way be related thereto.

MS9229(ASG)

MARK PART NUMBER
AND MFR. IDENT PER
AS478-7B



FED. SUP CLAS
5310

PART NO.	A REF	B REF	C ±.010	D ±.010	APPROX WEIGHT LB /100	PART NO.	A REF	B REF	C ±.010	D ±.010	APPROX WEIGHT LB /100
MS9229-01	.562	.500	.359	.328	.998	MS9229-40	1.062	.500	.859	.328	1.445
MS9229-02	.562	.625	.359	.453	1.114	MS9229-41	1.062	.625	.859	.453	1.554
MS9229-03	.562	.750	.359	.578	1.225	MS9229-42	1.062	.750	.859	.578	1.664
MS9229-04	.562	.875	.359	.703	1.335	MS9229-43	1.062	.875	.859	.703	1.773
MS9229-05	.562	1.000	.359	.828	1.445	MS9229-44	1.062	1.000	.859	.828	1.883
MS9229-06	.562	1.250	.359	1.078	1.664	MS9229-45	1.062	1.250	.859	1.078	2.103
MS9229-07	.562	1.500	.359	1.328	1.883	MS9229-46	1.062	1.500	.859	1.328	2.322
MS9229-10	.688	.500	.484	.328	1.114	MS9229-50	1.312	.500	1.109	.328	1.664
MS9229-11	.688	.625	.484	.453	1.225	MS9229-51	1.312	.625	1.109	.453	1.773
MS9229-12	.688	.750	.484	.578	1.335	MS9229-52	1.312	.750	1.109	.578	1.883
MS9229-13	.688	.875	.484	.703	1.445	MS9229-53	1.312	.875	1.109	.703	1.993
MS9229-14	.688	1.000	.484	.828	1.554	MS9229-54	1.312	1.000	1.109	.828	2.103
MS9229-15	.688	1.250	.484	1.078	1.773	MS9229-55	1.312	1.250	1.109	1.078	2.322
MS9229-16	.688	1.500	.484	1.328	1.993	MS9229-56	1.312	1.500	1.109	1.328	2.541
MS9229-20	.812	.500	.609	.328	1.225	MS9229-60	1.562	.500	1.359	.328	1.773
MS9229-21	.812	.625	.609	.453	1.335	MS9229-61	1.562	.625	1.359	.453	1.993
MS9229-22	.812	.750	.609	.578	1.445	MS9229-62	1.562	.750	1.359	.578	2.103
MS9229-23	.812	.875	.609	.703	1.554	MS9229-63	1.562	.875	1.359	.703	2.212
MS9229-24	.812	1.000	.609	.828	1.664	MS9229-64	1.562	1.000	1.359	.828	2.322
MS9229-25	.812	1.250	.609	1.078	1.883	MS9229-65	1.562	1.250	1.359	.708	2.541
MS9229-26	.812	1.500	.609	1.328	2.103	MS9229-66	1.562	1.500	1.359	1.328	2.761
MS9229-30	.938	.500	.734	.328	1.335	MS9229-70	1.812	.500	1.609	.328	2.103
MS9229-31	.938	.625	.734	.453	1.445	MS9229-71	1.812	.625	1.609	.453	2.212
MS9229-32	.938	.750	.734	.578	1.554	MS9229-72	1.812	.750	1.609	.578	2.322
MS9229-33	.938	.875	.734	.703	1.664	MS9229-73	1.812	.875	1.609	.703	2.431
MS9229-34	.938	1.000	.734	.828	1.773	MS9229-74	1.812	1.000	1.609	.828	2.541
MS9229-35	.938	1.250	.734	1.078	1.993	MS9229-75	1.812	1.250	1.609	1.078	2.761
MS9229-36	.938	1.500	.734	1.328	2.212	MS9229-76	1.812	1.500	1.609	1.328	2.970

INACTIVE FOR DESIGN AFTER 22 NOVEMBER 1966. USE MS 9601 (B)
INTERCHANGEABILITY RELATIONSHIP: MS9229 INDIVIDUAL PART NUMBERS MAY BE REPLACED BY ONE OR MORE
PART NUMBERS OF MS9601 SELECTED WITHIN THE SLOTTED HOLE DIMENSIONAL RANGE OF THE SUPERSEDED STANDARD.
THE INACTIVATED MS9229 PARTS SHALL NOT BE USED TO REPLACE THE SUPERSEDING MS9601 PARTS

MATERIAL: CORROSION RESISTANT STEEL AMS 5504.
HEAT TREATMENT AND CLEANING AMS 2550
HARDNESS: ROCKWELL C30 - 38
REMOVE BURRS AND BREAK SHARP EDGES.
DIMENSIONS IN INCHES, UNLESS OTHERWISE SPECIFIED TOLERANCES; LINEAR DIMENSIONS ±.015.
DO NOT USE UNANNOUNCED PART NUMBERS.

U.S. & AMS ARE SOLELY OF U.S. GOVERNMENT PROPERTY.

THIS STANDARD WAS DEVELOPED COOPERATIVELY WITH THE ENGINE AND PROPELLER UTILITY PARTS COMMITTEE OF THE SAE.

P. A. 1.114 - 11	MILITARY STANDARD	MS9229(ASG)
Other Cust Navy - AS	BRACKET - 90° ANGLE, AMS 5504, .190 x 250 BOLT	
PROCUREMENT SPECIFICATION 1010K	SUPERSEDES:	SHEET 1 OF 1

DD FORM 672-1
1 OCT 62

*U.S. GOVERNMENT PRINTING OFFICE 1967-251-514/X-3080

APPROVED 10 Feb 59
REVISED ④ 8 Aug 62 ⑤ 22 Nov 66