

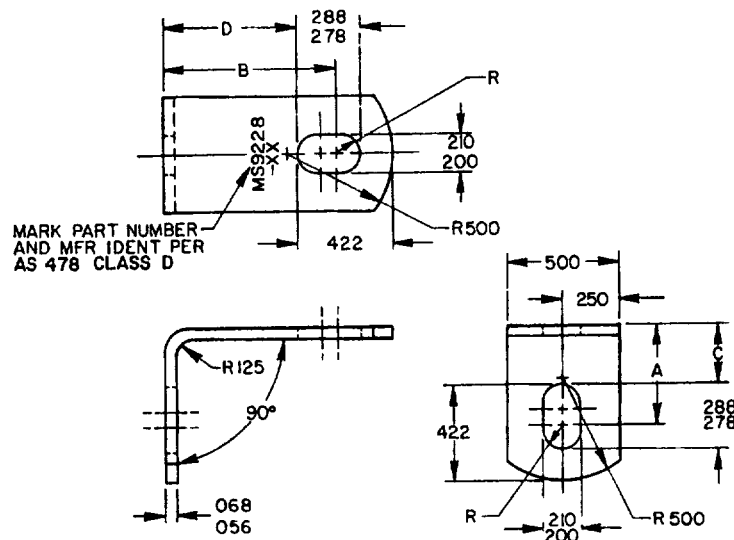
FED KIP CLASS
5340

TABLE 1 DASH NUMBERS AND DIMENSIONS

DASH NO	A REF	B REF	C ± .010	D ± .010	APPROX WEIGHT LB/100
-01	500	.500	.328	.328	1.037
-02	500	.625	.328	.453	1.149
-03	500	.750	.328	.578	1.256
-04	500	.875	.328	.703	1.366
-05	500	1.000	.328	.828	1.475
-06	500	1.250	.328	1.078	1.695
-07	500	1.500	.328	1.328	1.914
-08	500	1.750	.328	1.578	2.133
-10	.625	.625	.453	.453	1.256
-11	.625	.750	.453	.578	1.366
-12	.625	.875	.453	.703	1.475
-13	.625	1.000	.453	.828	1.585
-14	.625	1.250	.453	1.078	1.804
-15	.625	1.500	.453	1.328	2.024
-16	.625	1.750	.453	1.578	2.243
-20	.750	.750	.578	.578	1.475
-21	.750	.875	.578	.703	1.585
-22	.750	1.000	.578	.828	1.695
-23	.750	1.250	.578	1.078	1.914
-24	.750	1.500	.578	1.328	2.133
-25	.750	1.750	.578	1.578	2.353
-30	.875	.875	.703	.703	1.695
-31	.875	1.000	.703	.828	1.804
-32	.875	1.250	.703	1.078	2.024
-33	.875	1.500	.703	1.328	2.243
-34	.875	1.750	.703	1.578	2.461
-40	1.000	1.000	.828	.828	1.914
-41	1.000	1.250	.828	1.078	2.133
-42	1.000	1.500	.828	1.328	2.353
-43	1.000	1.750	.828	1.578	2.572
-44	1.000	2.000	.828	1.828	2.791

INACTIVE FOR DESIGN AFTER 22 NOVEMBER 1966. USE MS9600.
INTERCHANGEABILITY RELATIONSHIP. MS9228 INDIVIDUAL PART NUMBERS
MAY BE REPLACED BY ONE OR MORE PART NUMBERS OF MS9600 SELECTED
WITHIN THE SLOTTED ROLE DIMENSIONAL RANGE OF THE SUPERSEDED
STANDARD. THE INACTIVE MS9228 PARTS SHALL NOT BE USED TO
REPLACE THE SUPERSEDED MS9600 PARTS.

© ENTIRE STANDARD REVISED

PA NAVY-AS Other Cust ARMY-AR AIR FORCE-82	INTERNATIONAL INTEREST	TITLE BRACKET, ANGLE, 90° .190 BOLT	MILITARY STANDARD MS9228
PROCUREMENT SPECIFICATION NONE	SUPERSEDES	PAGE 1	OF 2

DD FORM 1 MAY 62 672-1 (COORDINATED)

PREVIOUS EDITIONS OF THIS FORM ARE OBSOLETE

5340-1741

USER ACTIVITIES

REVIEWER ACTIVITIES
DLA-1S

DISTRIBUTION STATEMENT A Approved for public release; distribution is unlimited
This military standard is approved for use by all Departments and Agencies of the Department of Defense
Selection for all new engineering and design applications and for repetitive use shall be made from this
document when applicable

AMSC N/A

REVISED © 18 JUN 87

APPROVED 10 FEB 59

USER ACTIVITIES

REVIEWER ACTIVITIES:
DLA-1SThis military standard is approved for use by all Departments and Agencies of the Department of Defense
Selection for all new engineering and design applications, and for repetitive use shall be made from this
document when applicableFED SUP CLASS
5340

REQUIREMENTS

- 1 MATERIAL CORROSION RESISTANT STEEL IN ACCORDANCE WITH AMS 5504
- 2 HEAT TREATMENT AND CLEANING HEAT TREATMENT AND CLEANING IN ACCORDANCE WITH AMS 2550
- 3 HARDNESS 30-38 HRC
- 4 DIMENSIONING AND TOLERANCING DIMENSIONING AND TOLERANCING SHALL BE IN ACCORDANCE WITH ANSI Y14.5M
- 5 TOLERANCES UNLESS OTHERWISE SPECIFIED, TOLERANCES SHALL BE FOR LINEAR DIMENSIONS $\pm .015$, ANGULAR DIMENSIONS $\pm 2^\circ$
- 6 PART NUMBER THE PART NUMBER SHALL CONSIST OF THE BASIC MS NUMBER FOLLOWED BY A DASH NUMBER FROM TABLE I

EXAMPLE MS9228-02

DASH NUMBER

BASIC MS NUMBER

MS9228-02 INDICATES - BRACKET, 90° ANGLE, LENGTH A, 500, LENGTH B, 625

NOTES

- 1 ALL DIMENSIONS ARE IN INCHES
- 2 DO NOT USE UNASSIGNED DASH NUMBERS
- 3 REMOVE BURRS AND BREAK SHARP EDGES
- 4 IN THE EVENT OF A CONFLICT BETWEEN THE TEXT OF THIS STANDARD AND THE REFERENCES CITED HEREIN, THE TEXT OF THIS STANDARD SHALL TAKE PRECEDENCE
- 5 REFERENCED GOVERNMENT (OR NON-GOVERNMENT) DOCUMENTS OF THE ISSUE LISTED IN THAT ISSUE OF THE DEPARTMENT OF DEFENSE INDEX OF SPECIFICATIONS AND STANDARDS (DODISS) SPECIFIED IN THE SOLICITATION, FORM A PART OF THIS STANDARD TO THE EXTENT SPECIFIED HEREIN
- 6 AS AND AMS ARE SOCIETY OF AUTOMOTIVE ENGINEERS, INC PUBLICATIONS
- 7 THIS STANDARD WAS DEVELOPED COOPERATIVELY WITH THE ENGINE AND PROPELLER UTILITY PARTS COMMITTEE OF THE SAE

APPROVED 65 FEB 59 REVISED (C) FOR CHANGES SEE PAGES 1 AND 2

PA	NAVY-AS	INTERNATIONAL INTEREST	TITLE	MILITARY STANDARD
Other Cust	ARMY-AR		BRACKET, ANGLE, 90° .190 BOLT	MS9228
AIR FORCE-82				
PROCUREMENT SPECIFICATION	SUPERSEDES		PAGE	OF
NONE			2	2

DD FORM 1 MAY 71 672-1 (COORDINATED)

PREVIOUS EDITIONS OF THIS FORM ARE OBSOLETE

5340-1741