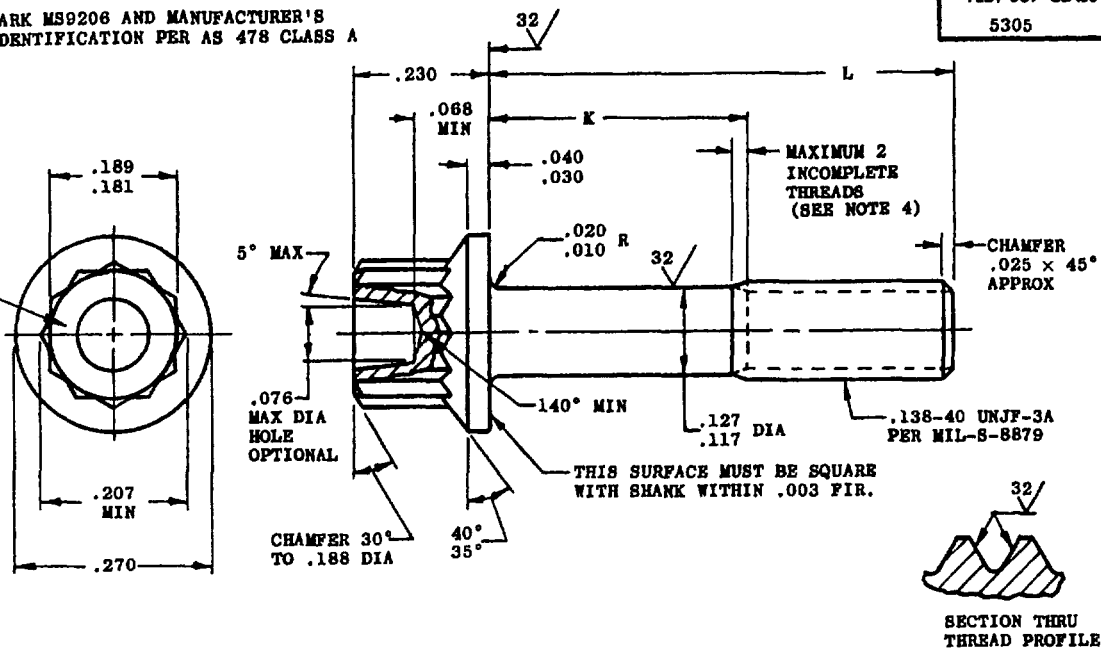


MS9206(ASG)MARK MS9206 AND MANUFACTURER'S
IDENTIFICATION PER AS 478 CLASS AFED. SUP CLASS
5305

PART NO.	L	K	APPROX WEIGHT LB/100	PART NO.	L	K	APPROX WEIGHT LB/100
MS9206-02	.250	.058-.078	.297	MS9206-13	.938	.352-.412	.539
MS9206-03	.312	.058-.078	.318	MS9206-14	1.000	.414-.474	.561
MS9206-04	.375	.058-.078	.340	MS9206-15	1.062	.476-.536	.583
MS9206-05	.438	.058-.078	.363	MS9206-16	1.125	.539-.599	.605
MS9206-06	.500	.058-.078	.386	MS9206-17	1.188	.602-.662	.627
MS9206-07	.562	.058-.078	.406	MS9206-18	1.250	.664-.724	.649
MS9206-08	.625	.058-.078	.429	MS9206-19	1.312	.726-.786	.671
MS9206-09	.688	.102-.162	.451	MS9206-20	1.375	.789-.849	.693
MS9206-10	.750	.164-.224	.473	MS9206-21	1.438	.852-.912	.715
MS9206-11	.812	.226-.286	.495	MS9206-22	1.500	.914-.974	.737
MS9206-12	.875	.289-.349	.517				

- SHANK SHALL BE STRAIGHT WITHIN .003 FIR. PER INCH OF SCREW LENGTH.
- THE CONCENTRICITY OF THREAD PD IN RELATION TO THE SHANK SHALL BE WITHIN .006 FIR.
- THE CONCENTRICITY OF THE SHANK IN RELATION TO THE WASHER FACE DIAMETER AND DOUBLE HEXAGON OD SHALL BE WITHIN .009 FIR.
- INCOMPLETE THREADS NOT TO ENTER FILLET.
- MATERIAL: STEEL AMS 6304.
- HARDNESS: ROCKWELL C42-46.
- FINISH: DIFFUSED NICKEL-CADMIUM PLATE AMS 2416. DIMENSIONS SPECIFIED ARE AFTER PLATING. CONTACT POINTS PERMISSIBLE. PD MAY BE REDUCED .0012 MAXIMUM BEFORE PLATING.
- MANUFACTURING SPECIFICATION: AMS 7459. PARTS SUBJECT TO MAGNETIC PARTICLE INSPECTION PER AMS 2640 BEFORE PLATING.
- SURFACE ROUGHNESS: AS 291 UNLESS OTHERWISE SPECIFIED SURFACES TO BE 125 MICROINCHES EXCEPT UPSET HEAD.
- BREAK SHARP EDGES .003-.015 UNLESS OTHERWISE SPECIFIED.
- DIMENSIONS IN INCHES. UNLESS OTHERWISE SPECIFIED, TOLERANCES: LINEAR DIMENSIONS $\pm .010$, ANGULAR DIMENSIONS $\pm 5^\circ$.
- DO NOT USE UNASSIGNED PART NUMBERS.

AS & AMS ARE SOCIETY OF AUTOMOTIVE ENGINEERS, INC. PUBLICATIONS

THIS STANDARD WAS DEVELOPED COOPERATIVELY WITH THE ENGINE AND PROPELLER UTILITY PARTS COMMITTEE OF THE SAE.

P.A. USAF - ASD	TITLE SCREW, MACHINE - STEEL AMS 6304, DIFFUSED NICKEL-CADMIUM PLATED, DOUBLE HEXAGON EXTENDED WASHER HEAD, .138-40 UNJF-3A	MILITARY STANDARD MS9206 (ASG)
Other Cust Navy - Weps		
PROCUREMENT SPECIFICATION NONE	SUPERSEDES:	SHEET 1 OF 1