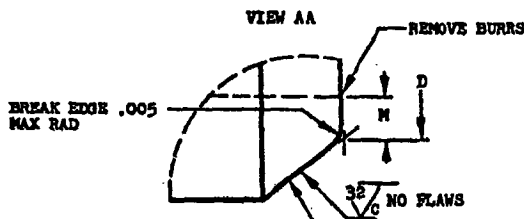
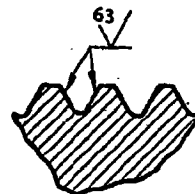


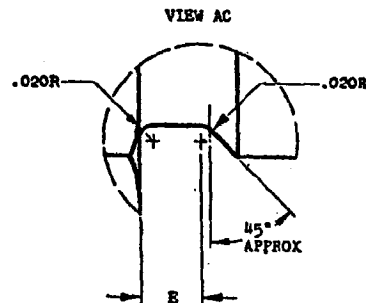
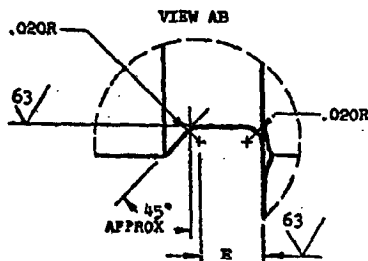
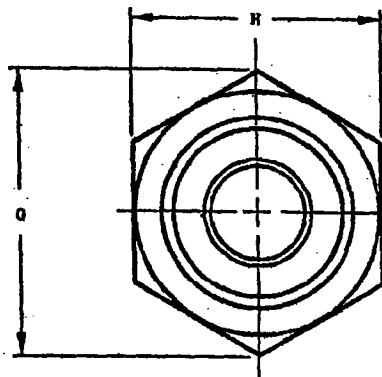
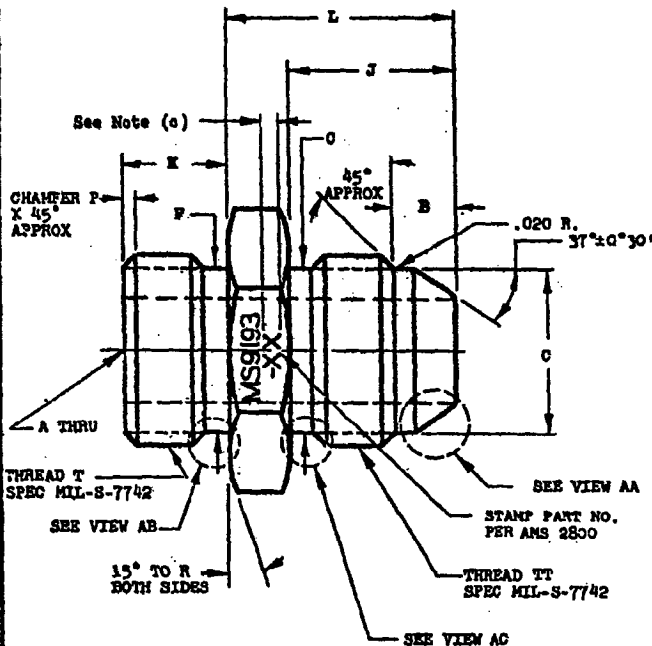
MS9193(ASG)



THIS SURFACE SHALL BE CONCENTRIC WITH THE PD WITHIN .005 FIR.



SECTION THRU THE PROFILE



THIS SURFACE SHALL BE SQUARE WITH THE PD WITHIN .010 FIR.

- (a) DIA F SHALL BE FREE OF THREAD MARKS.  
 (b) DIAMETER F SHALL BE CONCENTRIC WITH PD OF THREAD WITHIN .0025 FIR.  
 (c) .020-.040 FOR SIZES -.02, -.03 and -.04; .040-.060 FOR SIZES -.05 THRU .16; .090-.150 FOR .18 AND LARGER SIZES.

(d) ALL DIAMETERS SHALL BE CONCENTRIC WITHIN .010 FIR, UNLESS OTHERWISE SPECIFIED.  
 THIS STANDARD WAS DEVELOPED COOPERATIVELY WITH THE ENGINE AND PROPELLER UTILITY PARTS COMMITTEE OF THE SAE.

CUSTOMER  
 FOR  
 - P/100  
 REQUIREMENT SPECIFICATION  
 1000

MILITARY STANDARD

NIPPLE, TUBE - AMS 5639, BOSS

MS9193(ASG)

SHEET 1 OF 2

APPROVED 17 Apr 60 REVISED

