

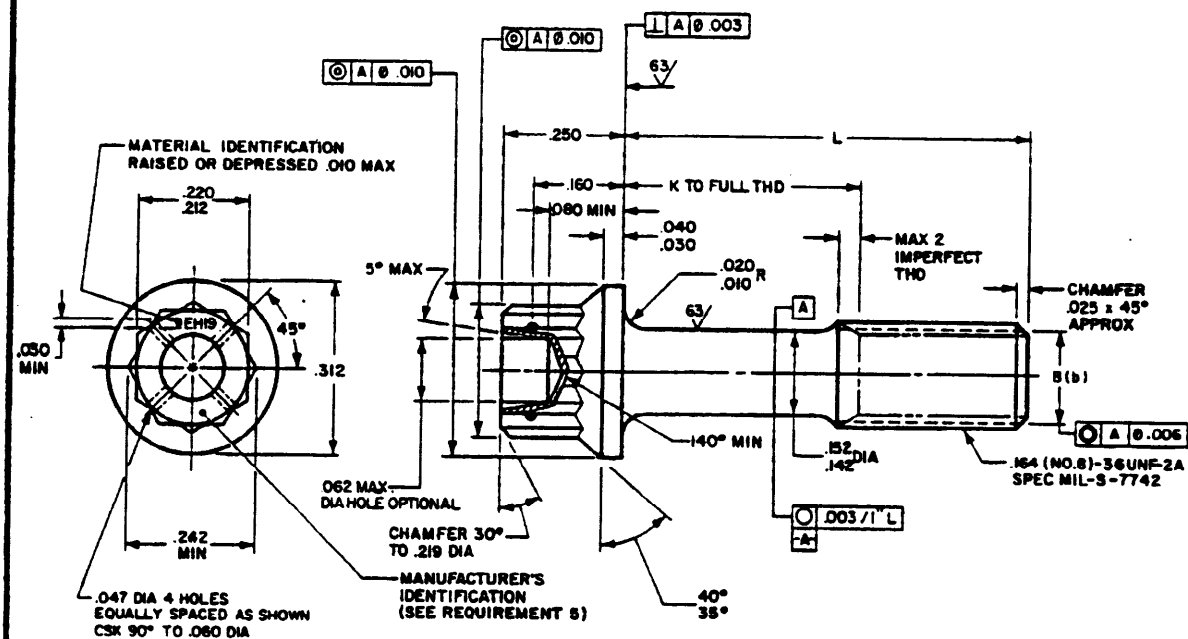
FED. SUP CLASS  
5305

USER SYMBOLS:

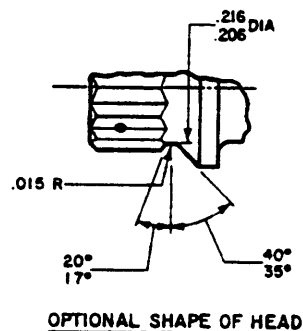
REVISION SYMBOLS:

DLA-15  
USAF-82

"Review/user information is current as of the date of this document.  
For future coordination of changes to this document, draft circulation  
should be based on the information in the current DODDS."



SECTION THRU THREAD PROFILE



OPTIONAL SHAPE OF HEAD

FIGURE 1

- (A) INACTIVE FOR NEW DESIGN AFTER 31 DECEMBER 1963.  
(B) DENOTES CHANGES.

AMSC N/A  
DISTRIBUTION STATEMENT A. Approved for public release;  
distribution is unlimited.

The military standard is approved for use by all Departments  
& Agencies of the Department of Defense. Section for all new  
engineering and design applications and for repetitive use shall  
be made from this document.

P.A.  
NAVY - AS  
Other Cust  
AF-99

TITLE

SCREW, MACHINE-CRES, DOUBLE HEXAGON  
EXTENDED WASHER HEAD, DRILLED, .164-36

MILITARY STANDARD

MS 9188

PROCLAMATION SPECIFICATION  
NONE

SUPERSEDES:

SHEET

OF

1 2

DD FORM 672-1 (Continued)

FORMER EDITIONS OF THIS PAPER ARE OBSOLETE

(PROJECT NO. 5305-1727)

PLATE NO. 2300

ENGINEERING SPECIFICATIONS  
AND STANDARDS DEPARTMENT

DATE

APPROVED 15 AUG 60  
REVISION (A) 20 NOV 63 (B) 13 JUNE 1988

FED. SUP CLASS  
5305

TABLE 1. DIMENSIONS AND WEIGHTS

PART NO.	L	K +.000 -.060	APPROX WEIGHT LB/100	PART NO.	L	K +.000 -.060	APPROX WEIGHT LB/100
MS9188-03	.312	(a)	.46	MS9188-19	1.312	.688	.95
MS9188-04	.375	(a)	.49	MS9188-20	1.375	.750	.98
MS9188-05	.438	(a)	.52	MS9188-21	1.438	.812	1.01
MS9188-06	.500	(a)	.55	MS9188-22	1.500	.875	1.04
MS9188-07	.562	(a)	.58	MS9188-23	1.562	.938	1.08
MS9188-08	.625	(a)	.61	MS9188-24	1.625	1.000	1.11
MS9188-09	.688	(a)	.64	MS9188-25	1.688	1.062	1.14
MS9188-10	.750	.125	.67	MS9188-26	1.750	1.125	1.17
MS9188-11	.812	.186	.70	MS9188-27	1.875	1.250	1.23
MS9188-12	.875	.250	.74	MS9188-28	2.000	1.375	1.29
MS9188-13	.938	.312	.77				
MS9188-14	1.000	.375	.80				
MS9188-15	1.062	.438	.83				
MS9188-16	1.125	.500	.86				
MS9188-17	1.188	.562	.90				
MS9188-18	1.250	.625	.92				

(a) THREAD TO HEAD. MAXIMUM TWO IMPERFECT THREADS

(b) B=PITCH DIAMETER (PD)

## REQUIREMENTS

- (B) 1. MATERIAL: CORROSION AND HEAT RESISTANT STEEL PER AMS 5732.
2. MANUFACTURER'S SPECIFICATION: AMS 7478.
3. PART SUBJECT TO FLUORESCENT PENETRANT INSPECTION PER AMS 2645.
4. SURFACE ROUGHNESS: UNLESS OTHERWISE SPECIFIED, 125 MICROINCHES PER ANSI B 46.1.
- (B) 5. MANUFACTURER'S IDENTIFICATION: THE MANUFACTURER'S SYMBOL PER MIL-STD-1291 SHALL BE MARKED ON THE BOLT HEAD (SEE FIG. 1). MARKING MAY BE FORMED BY FORGING, STAMPING OR LASER. MARKING SHALL BE RAISED OR INDENTED 0.010 INCH MAXIMUM.

## NOTES

1. BREAK SHARP EDGES .003-.015 INCH UNLESS OTHERWISE SPECIFIED.
2. DIMENSIONS IN INCHES.
3. DIMENSIONING AND TOLERANCING SHALL BE DONE IN ACCORDANCE WITH ANSI Y14.5-1982.
4. UNLESS OTHERWISE SPECIFIED: TOLERANCES: LINEAR DIMENSIONS:  $\pm 0.010$ , ANGULAR:  $\pm 5^\circ$ .
5. DO NOT USE UNASSIGNED PART NUMBERS.
6. IN THE EVENT OF A CONFLICT BETWEEN THE TEXT OF THIS STANDARD AND THE REFERENCES CITED HEREIN THE TEXT OF THIS STANDARD SHALL TAKE PRECEDENCE.
7. THIS STANDARD WAS DEVELOPED COOPERATIVELY WITH THE SAE COMMITTEE E-25, GENERAL STANDARDS FOR AEROSPACE PROPULSIONS SYSTEMS.

UNLESS OTHERWISE SPECIFIED:

REVISION SYMBOLS:

DLA-15  
USAF-82

"Review/user information is current as of the date of this document for future coordination of changes to this document. Draft circulation should be based on the information in the current DODISS."

This military standard is approved for use by all Departments & Agencies of the Department of Defense Selection for all new engineering and design applications and for repetitive use shall be made from this document

P.A.  
NAVY -- AS  
Other Cost  
AF-99

## TITLE

SCREW, MACHINE-CRES. DOUBLE HEXAGON,  
EXTENDED WASHER HEAD, DRILLED, .164-36

MILITARY STANDARD

MS 9188

PROCUREMENT SPECIFICATION  
NONE

SUPERSEDES:

SHEET

OF

(B) FOR CHANGES SEE SHEETS 1 AND 2

REVISED

APPROVED 15 AUG 60