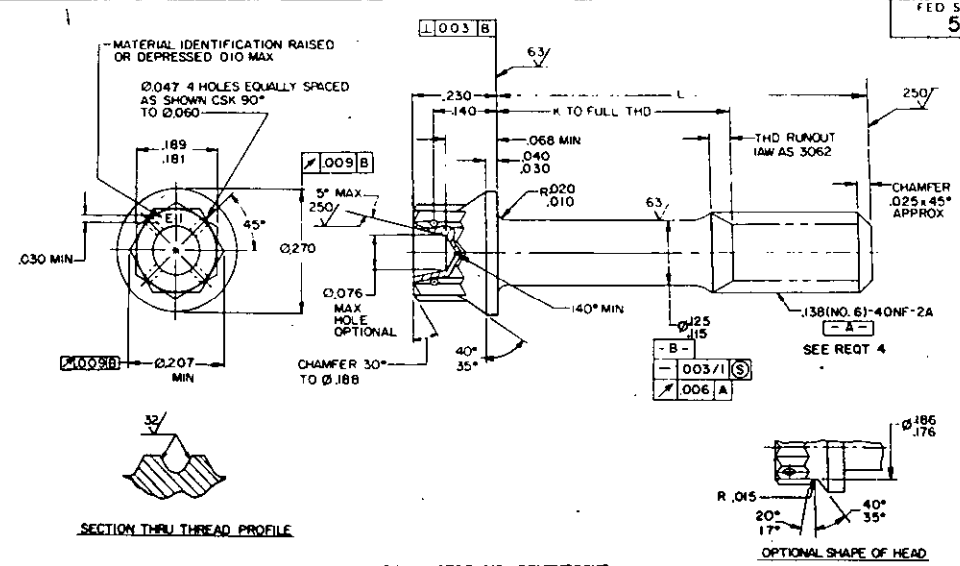


USER ACTIVITIES:

REVIEWER ACTIVITIES:

DISTRIBUTION STATEMENT A. Approved for public release; distribution is unlimited.

TABLE I. DASH NUMBERS AND DIMENSIONS

DASH NO.	L	K +.000 -.060	APPROX WEIGHT LB/100	DASH NO.	L	K +.000 -.060	APPROX WEIGHT LB/100
-02	.250	1/	.297	-17	1.188	.625	.627
-03	.312	1/	.318	-18	1.250	.688	.649
-04	.375	1/	.340	-19	1.312	.750	.671
-05	.438	1/	.363	-20	1.375	.812	.693
-06	.500	1/	.386	-21	1.438	.875	.715
-07	.562	1/	.406	-22	1.500	.938	.737
-08	.625	1/	.429				
-09	.688	.125	.451				
-10	.750	.188	.473				
-11	.812	.250	.495				
-12	.875	.312	.517				
-13	.938	.375	.539				
-14	1.000	.438	.561				
-15	1.062	.500	.583				
-16	1.125	.562	.605				

1/ THREAD TO HEAD. MAXIMUM TWO IMPERFECT THREADS.

REQUIREMENTS:

1. MATERIAL: STEEL AMS 6322 (UNS G87400).
2. HARDNESS: 26-32 HRC
3. FINISH: CADMIUM PLATE PER AMS 2400. DIMENSIONS SPECIFIED ARE AFTER PLATING.
4. THREADS: THREADS IN ACCORDANCE WITH MIL-S-7742. INCOMPLETE THREADS NOT TO ENTER FILLET.
5. DIMENSIONING AND TOLERANCING: DIMENSIONING AND TOLERANCING SHALL BE IN ACCORDANCE WITH ANSI Y14.5M.
6. WRENCHING CONFIGURATION: WRENCHING CONFIGURATION IN ACCORDANCE WITH AS 870.
7. SURFACE TEXTURE: SURFACE TEXTURE, UNLESS OTHERWISE SPECIFIED SHALL BE 125 MICROINCHES EXCEPT UPSET HEAD.
8. MAGNETIC PARTICLE INSPECTION: MAGNETIC PARTICLE INSPECTION PER AMS 2640.
9. TOLERANCE: UNLESS OTHERWISE SPECIFIED, TOLERANCES SHALL BE FOR LINEAR DIMENSIONS $\pm .010$, ANGULAR DIMENSIONS $\pm 5^{\circ}$.
10. EDGES: BREAK SHARP EDGES .003 - .015 UNLESS OTHERWISE SPECIFIED.

ⓑ ENTIRE STANDARD REVISED

P.A. NAVY-AS		TITLE SCREW-MACHINE, STEEL, DRILLED 12 POINT HEAD, .138(NO. 6)-40, CADMIUM PLATE	MILITARY STANDARD	
Other Cost			MS9183	
AIR FORCE-11		SUPERSEDES:	PAGE	OF
PROCUREMENT SPECIFICATION AMS 7452			1	2

FED. SUP CLASS
5305

11. PART NUMBER: THE PART SHALL CONSIST OF THE BASIC MS NUMBER FOLLOWED BY A DASH NUMBER FROM TABLE 1.

EXAMPLE: MS9183-02

DASH NUMBER

BASIC MS NUMBER

MS9183-02 INDICATES: SCREW, MACHINE, STEEL, DRILLED 12 POINT HEAD, .138-40,
CADMIUM PLATE, .250 LONG.

NOTES:

1. ALL DIMENSIONS ARE IN INCHES.
2. DO NOT USE UNASSIGNED PART NUMBERS.
3. IN THE EVENT OF A CONFLICT BETWEEN THE TEXT OF THIS STANDARD AND THE REFERENCES CITED HEREIN, THE TEXT OF THIS STANDARD SHALL TAKE PRECEDENCE.
4. REFERENCED GOVERNMENT (OR NON-GOVERNMENT) DOCUMENTS OF THE ISSUE LISTED IN THAT ISSUE OF THE DEPARTMENT OF DEFENSE INDEX OF SPECIFICATIONS AND STANDARDS (DODISS) SPECIFIED IN THE SOLICITATION FORM A PART OF THIS STANDARD TO THE EXTENT SPECIFIED HEREIN.
5. THIS STANDARD WAS DEVELOPED COOPERATIVELY WITH THE SAE AEROSPACE PROPULSION DIVISION.
6. AS AND AMS ARE SAE PUBLICATIONS.

USER ACTIVITIES:

REVIEWER ACTIVITIES:
DLA-1S

This military standard is approved for use by all Departments and Agencies of the Department of Defense. Selection for all new engineering and design applications and for repetitive use shall be made from this document when applicable.

APPROVED 31 MAR 58 REVISED (B) FOR CHANGES SEE PAGES 1 AND 2

P.A. NAVY-AS Other Cust	INTERNATIONAL INTEREST	TITLE SCREW-MACHINE, STEEL, DRILLED 12 POINT HEAD, .138(NO. 6)-40, CADMIUM PLATE	MILITARY STANDARD
AIR FORCE-11			MS9183
PROCUREMENT SPECIFICATION AMS 7452	SUPERSEDES:	PAGE 2 OF 2	

DD FORM 1 MAY 73 672-1 (COORDINATED)

PREVIOUS EDITIONS OF THIS FORM ARE OBSOLETE

5305-1713