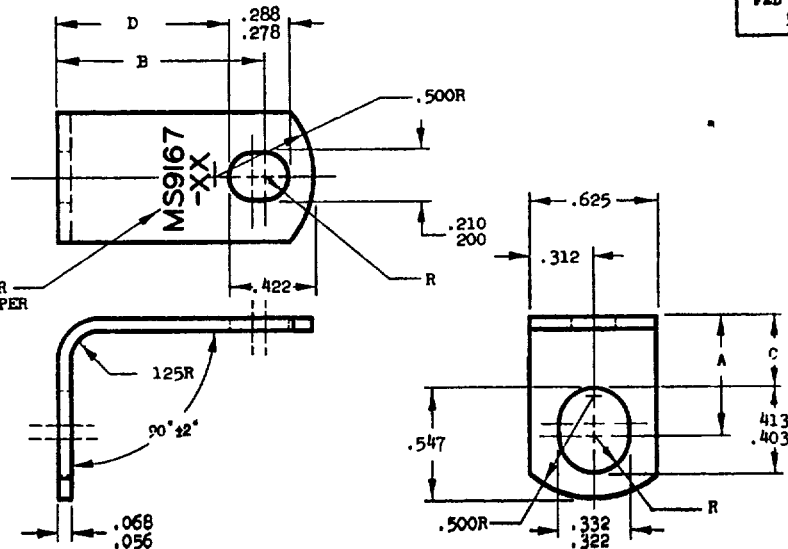


NOTES: When Government drawings, specifications, or other data are used for any purpose other than in connection with a definitely related Government procurement operation, the United States Government thereby incurs no responsibility, nor any obligation whatsoever; and the fact that the Government may have furnished, furnished, or in any way supplied the said drawings, specifications, or other data is not to be regarded by implication or otherwise as in any manner licensing the holder or any other person or corporation, or conveying any rights or permission to manufacture, use, or sell any patented invention that may in any way be related thereto.

MS9167(ASG)

MARK PART NUMBER  
AND MFR. IDENT PER  
AS 478-7B



FED SUP CLASS  
5340

PART NO.	A REF	B REF	C ±.010	D ±.010	APPROX WEIGHT LB /100	PART NO.	A REF	B REF	C ±.010	D ±.010	APPROX WEIGHT LB /100
MS9167-01	.562	.500	.328	.328	1.225	MS9167-40	1.062	.500	.828	.328	1.773
MS9167-02	.562	.625	.328	.453	1.362	MS9167-41	1.062	.625	.828	.453	1.910
MS9167-03	.562	.750	.328	.578	1.499	MS9167-42	1.062	.750	.828	.578	2.047
MS9167-04	.562	.875	.328	.703	1.636	MS9167-43	1.062	.875	.828	.703	2.184
MS9167-05	.562	1.000	.328	.828	1.773	MS9167-44	1.062	1.000	.828	.828	2.321
MS9167-06	.562	1.250	.328	1.078	2.047	MS9167-45	1.062	1.250	.828	1.078	2.596
MS9167-07	.562	1.500	.328	1.328	2.321	MS9167-46	1.062	1.500	.828	1.328	2.870
MS9167-10	.688	.500	.453	.328	1.362	MS9167-50	1.312	.500	1.078	.328	2.047
MS9167-11	.688	.625	.453	.453	1.499	MS9167-51	1.312	.625	1.078	.453	2.184
MS9167-12	.688	.750	.453	.578	1.636	MS9167-52	1.312	.750	1.078	.578	2.321
MS9167-13	.688	.875	.453	.703	1.773	MS9167-53	1.312	.875	1.078	.703	2.458
MS9167-14	.688	1.000	.453	.828	1.910	MS9167-54	1.312	1.000	1.078	.828	2.596
MS9167-15	.688	1.250	.453	1.078	2.184	MS9167-55	1.312	1.250	1.078	1.078	2.870
MS9167-16	.688	1.500	.453	1.328	2.458	MS9167-56	1.312	1.500	1.078	1.328	3.144
MS9167-20	.812	.500	.578	.328	1.499	MS9167-60	1.562	.500	1.328	.328	2.321
MS9167-21	.812	.625	.578	.453	1.636	MS9167-61	1.562	.625	1.328	.453	2.458
MS9167-22	.812	.750	.578	.578	1.773	MS9167-62	1.562	.750	1.328	.578	2.596
MS9167-23	.812	.875	.578	.703	1.910	MS9167-63	1.562	.875	1.328	.703	2.732
MS9167-24	.812	1.000	.578	.828	2.047	MS9167-64	1.562	1.000	1.328	.828	2.870
MS9167-25	.812	1.250	.578	1.078	2.321	MS9167-65	1.562	1.250	1.328	1.078	3.144
MS9167-26	.812	1.500	.578	1.328	2.596	MS9167-66	1.562	1.500	1.328	1.328	3.418
MS9167-30	.938	.500	.703	.328	1.636	MS9167-70	1.812	.500	1.578	.328	2.596
MS9167-31	.938	.625	.703	.453	1.773	MS9167-71	1.812	.625	1.578	.453	2.732
MS9167-32	.938	.750	.703	.578	1.910	MS9167-72	1.812	.750	1.578	.578	2.870
MS9167-33	.938	.875	.703	.703	2.047	MS9167-73	1.812	.875	1.578	.703	3.007
MS9167-34	.938	1.000	.703	.828	2.184	MS9167-74	1.812	1.000	1.578	.828	3.144
MS9167-35	.938	1.250	.703	1.078	2.458	MS9167-75	1.812	1.250	1.578	1.078	3.418
MS9167-36	.938	1.500	.703	1.328	2.732	MS9167-76	1.812	1.500	1.578	1.328	3.692

INACTIVE FOR DESIGN AFTER 22 NOVEMBER 1966. USE MS9598. (B)

INTERCHANGEABILITY RELATIONSHIP: MS9167 INDIVIDUAL PART NUMBERS MAY BE REPLACED BY ONE OR MORE PART NUMBERS OF MS9598 SELECTED WITHIN THE SLOTTED HOLE DIMENSIONAL RANGE OF THE SUPERSEDED STANDARD. THE INACTIVATED MS9167 PARTS SHALL NOT BE USED TO REPLACE THE SUPERSEDED MS9598 PARTS.

MATERIAL: STEEL AMS 6350. HARDEN (OIL QUENCH) AND TEMPER TO ROCKWELL C32-38.  
FINISH: CADMIUM PLATE AMS 2400. DIMENSIONS SPECIFIED ARE AFTER PLATING.  
REMOVE BURRS AND BREAK SHARP EDGES.  
DIMENSIONS IN INCHES. UNLESS OTHERWISE SPECIFIED: TOLERANCES; LINEAR DIMENSIONS ± .015

DO NOT USE UNASSIGNED PART NUMBERS.

AS & AMS ARE SOCIETY OF AUTOMOTIVE ENGINEERS PUBLICATIONS.

THIS STANDARD WAS DEVELOPED COOPERATIVELY WITH THE ENGINE AND PROPELLER UTILITY PARTS COMMITTEE OF THE SAE

P. A. USAF - 11 Other Cust Navy - AS	<b>MILITARY STANDARD</b> BRACKET - 90° ANGLE, AMS 6350, .190 x .312 HOLT	<b>MS9167(ASG)</b>
PROCUREMENT SPECIFICATION NOTE	SUPERSEDES:	SHEET 1 OF 1