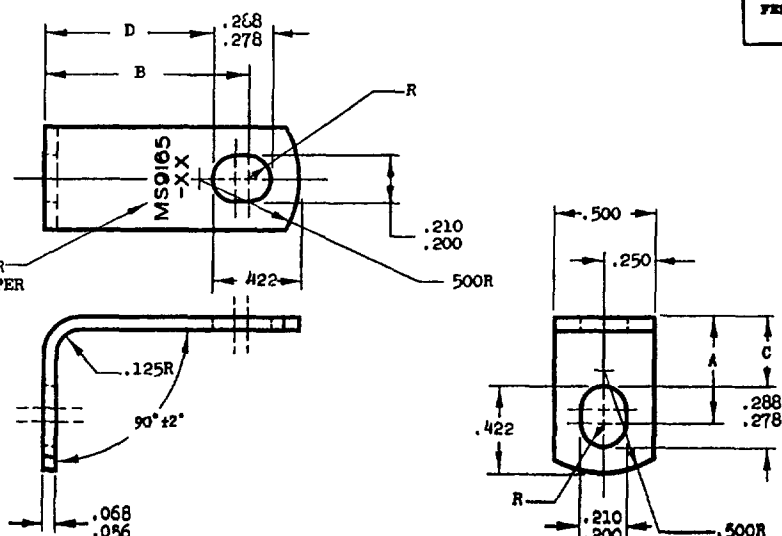


NOTES: When Government drawings, specifications, or other data are used for any purpose other than in connection with a definitely related Government procurement operation, the United States Government thereby incurs no responsibility, nor any obligation whatsoever, and the fact that the Government may have furnished, furnished, or in any way supplied the said drawings, specifications, or other data is not to be regarded by implication or otherwise as in any manner licensing the holder or any other person or corporation, or conveying any rights or providing any protection to manufacture, use, or sell any patented invention that may in any way be related thereto.

**MS9165(ASG)**

MARK PART NUMBER  
AND MFR. IDENT PER  
AS 478-7B



FED SUP CLAS.  
5340

INACTIVE FOR DESIGN AFTER 27 OCTOBER 1966. USE MS9165(ASG) INSTEAD. INDIVIDUAL PART NUMBERS MAY BE REPLACED BY ONE OR MORE PART NUMBERS OF MS9165(ASG) SELECTED WITHIN THE SLOTTED HOLE DIMENSIONAL RANGE OF THE SUPERSEDED STANDARD. THE INACTIVATED MS9165 PARTS SHALL NOT BE USED TO REPLACE THE SUPERSEDED MS9165 PARTS.

PART NO.	A REF	B REF	C ±.010	D ±.010	APPROX WEIGHT LB /100
MS9165-01	.500	.500	.328	.328	1.037
MS9165-02	.500	.625	.328	.453	1.149
MS9165-03	.500	.750	.328	.578	1.256
MS9165-04	.500	.875	.328	.703	1.366
MS9165-05	.500	1.000	.328	.828	1.475
MS9165-06	.500	1.250	.328	1.078	1.695
MS9165-07	.500	1.500	.328	1.328	1.914
MS9165-08	.500	1.750	.328	1.578	2.133
MS9165-10	.625	.625	.453	.453	1.256
MS9165-11	.625	.750	.453	.578	1.366
MS9165-12	.625	.875	.453	.703	1.475
MS9165-13	.625	1.000	.453	.828	1.585
MS9165-14	.625	1.250	.453	1.078	1.804
MS9165-15	.625	1.500	.453	1.328	2.024
MS9165-16	.625	1.750	.453	1.578	2.243
MS9165-20	.750	.750	.578	.578	1.475
MS9165-21	.750	.875	.578	.703	1.585
MS9165-22	.750	1.000	.578	.828	1.695
MS9165-23	.750	1.250	.578	1.078	1.914
MS9165-24	.750	1.500	.578	1.328	2.133
MS9165-25	.750	1.750	.578	1.578	2.353
MS9165-30	.875	.875	.703	.703	1.695
MS9165-31	.875	1.000	.703	.828	1.804
MS9165-32	.875	1.250	.703	1.078	2.024
MS9165-33	.875	1.500	.703	1.328	2.243
MS9165-34	.875	1.750	.703	1.578	2.463
MS9165-40	1.000	1.000	.828	.828	1.914
MS9165-41	1.000	1.250	.828	1.078	2.133
MS9165-42	1.000	1.500	.828	1.328	2.353
MS9165-43	1.000	1.750	.828	1.578	2.572
MS9165-44	1.000	2.000	.828	1.828	2.791

MATERIAL: STEEL AMS 6350. HARDEN (OIL QUENCH) AND TEMPER TO ROCKWELL C32-38.  
FINISH: CADMIUM PLATE AMS 2400. DIMENSIONS SPECIFIED ARE AFTER PLATING.  
REMOVE BURRS AND BREAK SHARP EDGES.  
DIMENSIONS IN INCHES. UNLESS OTHERWISE SPECIFIED: TOLERANCES; LINEAR DIMENSIONS ±.015.

DO NOT USE UNASSIGNED PART NUMBERS.

AS & AMS ARE SOCIETY OF AUTOMOTIVE ENGINEERS PUBLICATIONS.

THIS STANDARD WAS DEVELOPED COOPERATIVELY WITH THE ENGINE AND PROPELLER UTILITY PARTS COMMITTEE OF THE SAE

P. A.

USAF - 11

Other Cust

Navy - AS

**MILITARY STANDARD**

BRACKET - 90° ANGLE, AMS 6350, .190 BOLT

**MS9165(ASG)**

PROCUREMENT SPECIFICATION  
1005

SUPERSEDES:

SHEET 1 OF 1

NO FORM 673-1  
1 OCT 62

APPROVED 17 Oct 58 REVISED 6 Aug 62 22 Nov 66