

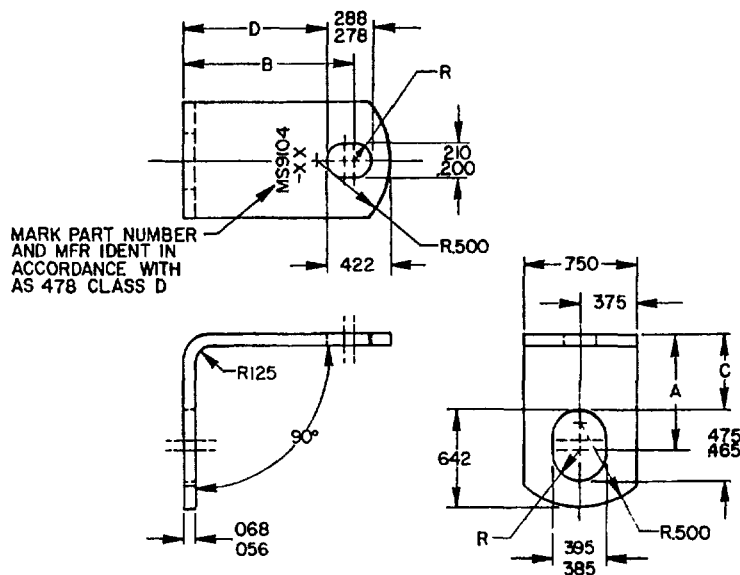
FED SUP CLASS  
5340

TABLE 1. DASH NUMBERS AND DIMENSIONS

DASH NO	A REF	B REF	C ±.010	D ±.010	APPROX WEIGHT LB/100	DASH NO	A REF	B REF	C ±.010	D ±.010	APPROX WEIGHT LB/100
-01	.625	500	.359	.328	1.546	-40	1.250	500	.984	.328	2.286
-02	.625	.625	.359	.453	1.711	-41	1.250	.625	.984	.453	2.533
-03	.625	.750	.359	.578	1.875	-42	1.250	.750	.984	.578	2.698
-04	.625	.875	.359	.703	1.912	-43	1.250	.875	.984	.703	2.862
-05	.625	1.000	.359	.828	2.175	-44	1.250	1.000	.984	.828	3.027
-06	.625	1.250	.359	1.078	2.533	-45	1.250	1.250	.984	1.078	3.356
-07	.625	1.500	.359	1.328	2.862	-46	1.250	1.500	.984	1.328	3.685
-10	.750	.500	.484	.328	1.711	-50	1.500	500	1.234	.328	2.698
-11	.750	.625	.484	.453	1.875	-51	1.500	.625	1.234	.453	2.862
-12	.750	.750	.484	.578	1.912	-52	1.500	.750	1.234	.578	3.027
-13	.750	.875	.484	.703	2.175	-53	1.500	.875	1.234	.703	3.192
-14	.750	1.000	.484	.828	2.286	-54	1.500	1.000	1.234	.828	3.356
-15	.750	1.250	.484	1.078	2.698	-55	1.500	1.250	1.234	1.078	3.685
-16	.750	1.500	.484	1.328	3.027	-56	1.500	1.500	1.234	1.328	4.014
-20	.875	.500	.609	.328	1.875	-60	1.750	500	1.484	.328	3.027
-21	.875	.625	.609	.453	1.912	-61	1.750	.625	1.484	.453	3.192
-22	.875	.750	.609	.578	2.175	-62	1.750	.750	1.484	.578	3.356
-23	.875	.875	.609	.703	2.286	-63	1.750	.875	1.484	.703	3.420
-24	.875	1.000	.609	.828	2.533	-64	1.750	1.000	1.484	.828	3.685
-25	.875	1.250	.609	1.078	2.862	-65	1.750	1.250	1.484	1.078	4.014
-26	.875	1.500	.609	1.328	3.192	-66	1.750	1.500	1.484	1.328	4.343
-30	1.000	500	.734	.328	1.912	-70	2.000	500	1.734	.328	3.356
-31	1.000	.625	.734	.453	2.199	-71	2.000	.625	1.734	.453	3.420
-32	1.000	.750	.734	.578	2.286	-72	2.000	.750	1.734	.578	3.685
-33	1.000	.875	.734	.703	2.533	-73	2.000	.875	1.734	.703	3.819
-34	1.000	1.000	.734	.828	2.698	-74	2.000	1.000	1.734	.828	4.014
-35	1.000	1.250	.734	1.078	3.027	-75	2.000	1.250	1.734	1.078	4.343
-36	1.000	1.500	.734	1.328	3.356	-76	2.000	1.500	1.734	1.328	4.644

INACTIVE FOR DESIGN AFTER 22 NOVEMBER 1966. USE MS9595  
INTERCHANGEABILITY RELATIONSHIP: MS9104 INDIVIDUAL PART NUMBERS  
MAY BE REPLACED BY ONE OR MORE PART NUMBERS OF MS9595 SELECTED  
WITHIN THE SLOTTED HOLE DIMENSIONAL RANGE OF THE SUPERSEDED  
STANDARD. THE INACTIVATED MS9104 PARTS SHALL NOT BE USED TO  
REPLACE THE SUPERSEDING MS9595 PARTS.

© ENTIRE STANDARD REVISED

P.A. NAVY-AS INTERNATIONAL INTEREST		TITLE		MILITARY STANDARD	
Other Cust ARMY-AR		BRACKET, ANGLE, 90°		MS9104	
AIR FORCE-82		.190 x .375 BOLT			
PROCUREMENT SPECIFICATION		SUPERSEDES		PAGE OF	
NONE				2	

DD 672-1 COORDINATED

5340-1740

UNPRACTICABLE

REVIEWER ACTIVITY  
DLA-1S

DISTRIBUTION STATEMENT A Approved for public release; distribution is unlimited  
This military standard is approved for use by all Departments and Agencies of the Department of Defense  
Selection for all new engineering and design applications and for repetitive use shall be made from this  
document when applicable

AMSC N/A

APPROVED 17 OCT 58  
REVISED © 18 JUN 87

USER ACTIVITIES

REVIEWER ACTIVITIES  
DLA - IS

This military standard is approved for use by all Departments and Agencies of the Department of Defense. Selection for all new engineering and design applications and for repetitive use shall be made from this document when applicable.

FED SUP CLASS  
5340

## REQUIREMENTS

1. MATERIAL. CORROSION RESISTANT STEEL IN ACCORDANCE WITH AMS 5510.
2. DIMENSIONING AND TOLERANCING DIMENSIONING AND TOLERANCING SHALL BE IN ACCORDANCE WITH ANSI Y14.5M
3. TOLERANCES UNLESS OTHERWISE SPECIFIED, TOLERANCES SHALL BE FOR LINEAR DIMENSIONS  $\pm .015$ , ANGULAR DIMENSIONS  $\pm 2^\circ$
4. PART NUMBER THE PART NUMBER SHALL CONSIST OF THE BASIC MS NUMBER FOLLOWED BY A DASH NUMBER FROM TABLE I

EXAMPLE, MS9104-02

DASH NUMBER

BASIC MS NUMBER

MS9104-02 INDICATES - BRACKET,  $90^\circ$  ANGLE, LENGTH A, .625; LENGTH B, .625.

## NOTES

1. ALL DIMENSIONS ARE IN INCHES
2. DO NOT USE UNASSIGNED DASH NUMBERS.
3. REMOVE BURRS AND BREAK SHARP EDGES
4. IN THE EVENT OF A CONFLICT BETWEEN THE TEXT OF THIS STANDARD AND THE REFERENCES CITED HEREIN, THE TEXT OF THIS STANDARD SHALL TAKE PRECEDENCE
5. REFERENCED GOVERNMENT (OR NON-GOVERNMENT) DOCUMENTS OF THE ISSUE LISTED IN THAT ISSUE OF THE DEPARTMENT OF DEFENSE INDEX OF SPECIFICATIONS AND STANDARDS (DODISS) SPECIFIED IN THE SOLICITATION, FORM A PART OF THIS STANDARD TO THE EXTENT SPECIFIED HEREIN.
6. AS AND AMS ARE SOCIETY OF AUTOMOTIVE ENGINEERS, INC. PUBLICATIONS.
7. THIS STANDARD WAS DEVELOPED COOPERATIVELY WITH THE ENGINE AND PROPELLER UTILITY PARTS COMMITTEE OF THE SAE.

APPROVED 17 OCT 58 REVISED © FOR CHANGES SEE PAGES 1 AND 2

PA NAVY-AS	INTERNATIONAL INTEREST	TITLE	MILITARY STANDARD
Other Cust ARMY-AR		BRACKET, ANGLE, $90^\circ$ .190 x .375 BOLT	MS9104
AIR FORCE -82			
PROCUREMENT SPECIFICATION NONE	SUPERSEDES	PAGE 2	OF 2