

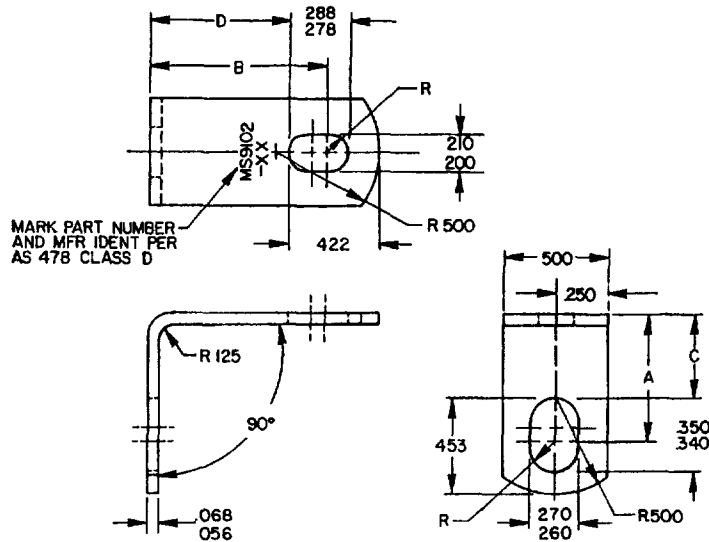
FED SUP CLASS
5340

TABLE I DASH NUMBERS AND DIMENSIONS.

DASH NO	A REF	B REF	C ±.010	D ±.010	APPROX WEIGHT LB/100
-01	.562	.500	.359	.328	.998
-02	.562	.625	.359	.453	1.114
-03	.562	.750	.359	.578	1.225
-04	.562	.875	.359	.703	1.335
-05	.562	1.000	.359	.828	1.445
-06	.562	1.250	.359	1.078	1.664
-07	.562	1.500	.359	1.328	1.883
-10	.688	.500	.484	.328	1.114
-11	.688	.625	.484	.453	1.225
-12	.688	.750	.484	.578	1.335
-13	.688	.875	.484	.703	1.445
-14	.688	1.000	.484	.828	1.554
-15	.688	1.250	.484	1.078	1.773
-16	.688	1.500	.484	1.328	1.993
-20	.812	.500	.609	.328	1.225
-21	.812	.625	.609	.453	1.335
-22	.812	.750	.609	.578	1.445
-23	.812	.875	.609	.703	1.554
-24	.812	1.000	.609	.828	1.664
-25	.812	1.250	.609	1.078	1.883
-26	.812	1.500	.609	1.328	2.103
-30	.938	.500	.734	.328	1.335
-31	.938	.625	.734	.453	1.445
-32	.938	.750	.734	.578	1.554
-33	.938	.875	.734	.703	1.664
-34	.938	1.000	.734	.828	1.773
-35	.938	1.250	.734	1.078	1.993
-36	.938	1.500	.734	1.328	2.212

DASH NO	A REF	B REF	C ±.010	D ±.010	APPROX WEIGHT LB/100
-40	1.062	.500	.859	.328	1.445
-41	1.062	.625	.859	.453	1.554
-42	1.062	.750	.859	.578	1.664
-43	1.062	.875	.859	.703	1.773
-44	1.062	1.000	.859	.828	1.883
-45	1.062	1.250	.859	1.078	2.103
-46	1.062	1.500	.859	1.328	2.322
-50	1.312	.500	1.109	.328	1.664
-51	1.312	.625	1.109	.453	1.773
-52	1.312	.750	1.109	.578	1.883
-53	1.312	.875	1.109	.703	1.993
-54	1.312	1.000	1.109	.828	2.103
-55	1.312	1.250	1.109	1.078	2.322
-56	1.312	1.500	1.109	1.328	2.541
-60	1.562	.500	1.359	.328	1.773
-61	1.562	.625	1.359	.453	1.993
-62	1.562	.750	1.359	.578	2.103
-63	1.562	.875	1.359	.703	2.212
-64	1.562	1.000	1.359	.828	2.322
-65	1.562	1.250	1.359	1.078	2.541
-66	1.562	1.500	1.359	1.328	2.761
-70	1.812	.500	1.609	.328	2.103
-71	1.812	.625	1.609	.453	2.212
-72	1.812	.750	1.609	.578	2.322
-73	1.812	.875	1.609	.703	2.431
-74	1.812	1.000	1.609	.828	2.541
-75	1.812	1.250	1.609	1.078	2.761
-76	1.812	1.500	1.609	1.328	2.970

INACTIVE FOR DESIGN AFTER 22 NOVEMBER 1966. USE MS9593.
 INTERCHANGEABILITY RELATIONSHIP: MS9101 INDIVIDUAL PART NUMBERS
 MAY BE REPLACED BY ONE OR MORE PART NUMBERS OF MS9593 SELECTED
 WITHIN THE SLOTTED HOLE DIMENSIONAL RANGE OF THE SUPERSEDED
 STANDARD. THE INACTIVATED MS9102 PARTS SHALL NOT BE USED TO
 REPLACE THE SUPERSEDING MS9593 PARTS.

© ENTIRE STANDARD REVISED

PA NAVY-AS	INTERNATIONAL INTEREST	TITLE	MILITARY STANDARD
Other Cust		BRACKET, ANGLE, 90°	MS9102
ARMY-AR		.190 x .250 BOLT	
AIR FORCE-82			
PROCUREMENT SPECIFICATION	SUPERSEDES	PAGE	OF
NONE		1	2

DISTRIBUTION STATEMENT A Approved for public release, distribution is unlimited
 This military standard is approved for use by all Departments and Agencies of the Department of Defense
 selection for all new engineering and design applications and for repetitive use shall be made from this
 document when applicable

USER ACTIVITIES

REVIEWER ACTIVITIES
DLA-1S

APPROVED 17 OCT 58 REVISED 18 JUN 87

USER ACTIVITIES

REVIEWER ACTIVITIES
DLA - ISThis military standard is approved for use by all Departments and Agencies of the Department of Defense
Selection for all new engineering and design applications and for repetitive use shall be made from this
document when applicableFED SUP CLASS
5340

REQUIREMENTS:

1. MATERIAL. CORROSION RESISTANT STEEL IN ACCORDANCE WITH AMS 5510.
2. DIMENSIONING AND TOLERANCING. DIMENSIONING AND TOLERANCING SHALL BE IN ACCORDANCE WITH ANSI Y14.5M
3. TOLERANCES UNLESS OTHERWISE SPECIFIED, TOLERANCES SHALL BE FOR LINEAR DIMENSIONS $\pm .015$, ANGULAR DIMENSIONS $\pm 2^\circ$
4. PART NUMBER THE PART NUMBER SHALL CONSIST OF THE BASIC MS NUMBER FOLLOWED BY A DASH NUMBER FROM TABLE I

EXAMPLE MS9102-02

└── DASH NUMBER

└── BASIC MS NUMBER

MS9102-02 INDICATES - BRACKET, 90° ANGLE, LENGTH A, .562, LENGTH B, .625

NOTES:

1. ALL DIMENSIONS ARE IN INCHES
2. DO NOT USE UNASSIGNED DASH NUMBERS
3. REMOVE BURRS AND BREAK SHARP EDGES
4. IN THE EVENT OF A CONFLICT BETWEEN THE TEXT OF THIS STANDARD AND THE REFERENCES CITED HEREIN, THE TEXT OF THIS STANDARD SHALL TAKE PRECEDENCE.
5. REFERENCED GOVERNMENT (OR NON-GOVERNMENT) DOCUMENTS OF THE ISSUE LISTED IN THAT ISSUE OF THE DEPARTMENT OF DEFENSE INDEX OF SPECIFICATIONS AND STANDARDS (DODISS) SPECIFIED IN THE SOLICITATION, FORM A PART OF THIS STANDARD TO THE EXTENT SPECIFIED HEREIN
6. AS AND AMS ARE SOCIETY OF AUTOMOTIVE ENGINEERS, INC PUBLICATIONS
7. THIS STANDARD WAS DEVELOPED COOPERATIVELY WITH THE ENGINE AND PROPELLER UTILITY PARTS COMMITTEE OF THE SAE

APPROVED 17 OCT 58 REVISED (C) FOR CHANGES SEE PAGES 1 AND 2

PA NAVY-AS	INTERNATIONAL INTEREST	TITLE	MILITARY STANDARD
Other Cust ARMY-AR AIR FORCE-82		BRACKET, ANGLE, 90° , .190 x .250 BOLT	MS9102
PROCUREMENT SPECIFICATION NONE	SUPERSEDES	PAGE 2	OF 2

DD FORM 1 MAY 52 672-1 (COORDINATED)

PREVIOUS EDITIONS OF THIS FORM ARE OBSOLETE

5340-1738