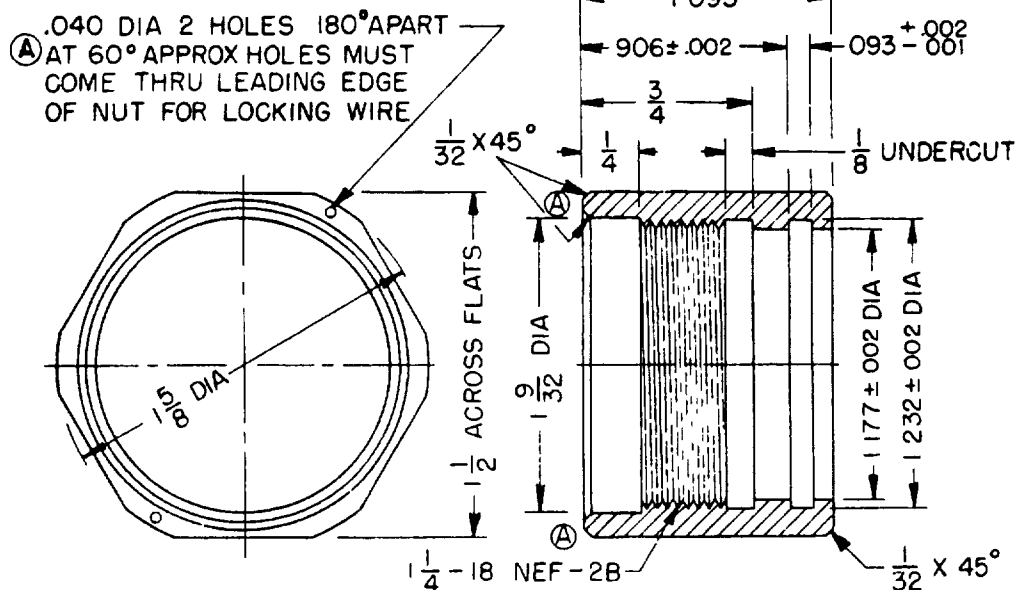


NOTICE: When Government drawings, specifications or other data are used for any purpose other than in connection with a definitely related Government procurement operation, the United States Government thereby incurs no responsibility nor any obligation whatsoever, and the fact that the Government may have formulated, furnished, or in any way supplied the said drawings, specifications or other data is not to be regarded as an implication or other warranty as to its accuracy, its use, or its sale in any way be related thereto.

FED. SUP CLASS.
5935



PART NO. MS91598-1

MATERIAL: BRASS.

NOTES:

1. All dimensions in inches.
2. Unless otherwise specified, tolerances are $\pm 1/64$ on fractions, $\pm .005$ on decimals, and $\pm 1/2^\circ$ on angles.
3. Referenced specification shall be of the issue in effect on date of invitation for bids.

THIS PART IS FOR DESIGN USE ONLY AND IS NOT TO BE STOCKED OR CATALOGUED.

APPROVED 21 Sept. 1954 (A) 14 July 1955 REVISED

CUSTODIANS
SigC
Ships
USAF

OTHER INT
A—O
N—AMCOR

MILITARY STANDARD

MS91598

(A)

NUT, COUPLING; SERIES LC CONNECTORS

PROCUREMENT SPECIFICATION
MIL-C-3650

SUPERSEDES

SHEET 1 OF 1