

User activities:
Army - AG, AV, ME, MI
Navy - CG, MC, OS

Review activities:
Army - AG, AV, ME, MI
Navy - SH

This military standard is mandatory for use by all Departments and Agencies of the Department of Defense. Selection for all new engineering and design applications and for repetitive use shall be made from this document.

DASH NO./		SIZE (DIA OF CAP) A	SH/FT-HOLE DIA B	DIMENSIONS									
				C	D	E	F	G	H	J	K	L	M
-1N1B	-1N1G	3/4	0.127±0.002	1/2	3/8±1/16	---	---	5/8-1/64	5/32	1/4	No. 4-40 UNC-3B	3/8	---
-1N2B	-1N2G	1-1/8	0.252±0.002	5/8	1/2±1/16	9/32	No. 2-56 UNC-3B	13/16-1/64	7/32	11/32		15/32	1/4
-2N2B	-2N2G	1-5/8		3/4	1/2±1/8	13/32	No. 6-32 UNC-3B	1-1/8±1/16-1/64	1/4-1/64	3/8±1/32-0	No. 8-32 UNC-3B	3/4	7/16
-4N2B	-4N2G	2-3/8		7/8	1/2±1/8	5/8	No. 6-32 UNC-3B	1-3/4-1/64	1/4	7/16		15/16	7/16

1. The dash number added to the MS military-standard number constitutes the MS part number; for example, MS91531-1N1B. The dash number indicates the following: First character - knob size; second character - knob form (plain or spinner); third character - shaft-hole diameter; fourth character - "B" (waterless black No. 37038 and "G" lusterless gray No. 38231 per Fed. Std. No. 595.

PLAIN KNOB
MS91531--N--B

SPINNER KNOB
MS91531-4B2B

BASIC KNOBS

ALTERNATE CAP DESIGN TO PROVIDE FOR PROJECTED CODING CAP AT OPTION OF SUPPLIER

F TAP 3 HOLES

2 HOLES

90° 120° 120° 45°

DRILL KNOB 125 DIA 3/8 DEEP

"6-20 SELF-TAPPING SHLD SCR. 1/8 LG UNDER SHOULDER

FED. SUP CLASS 5355

APPROVED 2 December 1955 REVISED A 16 May 1958 B 17 June 1960 C 19 Oct 1964 D 26 July 1968 E 20 Aug 1971

INACTIVE FOR NEW DESIGN AFTER 20 AUGUST 1971

FOR CHANGES SEE PAGES 1 and 7 (Project 5355-0099)

P.A. EC Other Cust EL 11	TITLE KNOBS, CONTROL, ROUND, PLASTIC (WITH FLUTED GRIP)	MILITARY STANDARD MS 91531
PROCUREMENT SPECIFICATION M.L.-K-3826	SUPERSEDES	Page 1 OF 7

DD FORM 672-1 (Coordinated)

This military standard is mandatory for use by all Departments and Agencies of the Department of Defense. Selection for all new engineering and design applications and for repetitive use shall be made from this document.

Review activities:
 Army - AT, AV, ME, MI
 Navy - CG, MC, OS

User activities:
 Army - IN
 Navy - CG, MC, OS

FED. SUP CLASS
5355

DASH NO./	ACCESSORY	DIMENSIONS										
		E	FF	OG	L	N	O	P	R	S	T	U
-4HB	Dial plate	2/										
-4HO		3/										
-4TB		4/										
-4TG		5/										
-4AB		6/										
-4AO		7/										
-4SB		8/										
-4SO	Skirt	9/	5/8	0.140	---	15/16	---	4	---	---	---	---
-4S		10/										
-4OB		11/										
-4OO		12/										
-4OS		13/										
-4TS		14/										
-4TO		15/										
-4TB		16/										
-4TB		17/										
-4TB		18/										
-4TB		19/										
-4TB		20/										
-4TB		21/										
-4TB		22/										
-4TB		23/										
-4TB		24/										
-4TB		25/										
-4TB		26/										
-4TB		27/										
-4TB		28/										
-4TB		29/										
-4TB		30/										
-4TB		31/										
-4TB		32/										
-4TB		33/										
-4TB		34/										
-4TB		35/										
-4TB		36/										
-4TB		37/										
-4TB		38/										
-4TB		39/										
-4TB		40/										
-4TB		41/										
-4TB		42/										
-4TB		43/										
-4TB		44/										
-4TB		45/										
-4TB		46/										
-4TB		47/										
-4TB		48/										
-4TB		49/										
-4TB		50/										
-4TB		51/										
-4TB		52/										
-4TB		53/										
-4TB		54/										
-4TB		55/										
-4TB		56/										
-4TB		57/										
-4TB		58/										
-4TB		59/										
-4TB		60/										
-4TB		61/										
-4TB		62/										
-4TB		63/										
-4TB		64/										
-4TB		65/										
-4TB		66/										
-4TB		67/										
-4TB		68/										
-4TB		69/										
-4TB		70/										
-4TB		71/										
-4TB		72/										
-4TB		73/										
-4TB		74/										
-4TB		75/										
-4TB		76/										
-4TB		77/										
-4TB		78/										
-4TB		79/										
-4TB		80/										
-4TB		81/										
-4TB		82/										
-4TB		83/										
-4TB		84/										
-4TB		85/										
-4TB		86/										
-4TB		87/										
-4TB		88/										
-4TB		89/										
-4TB		90/										
-4TB		91/										
-4TB		92/										
-4TB		93/										
-4TB		94/										
-4TB		95/										
-4TB		96/										
-4TB		97/										
-4TB		98/										
-4TB		99/										
-4TB		100/										

1/ The dash number added to the MS military-standard number constitutes the MS part number; for example, MS91531-1PW. The dash number indicates the following: First character - size; second character - accessory (dial plate, pointer, skirt); third character - "B" lusterless black No. 37038, "G" lusterless gray No. 36231, and "W" lusterless white No. 37876 per Fed. Std. No. 695.

2/ Dial plate calibrated clockwise 0 to 100 over 180°.

3/ Dial plate calibrated clockwise 0 to 100 over 270°.

4/ Dial plate calibrated clockwise 0 to 100 over 360°.

5/ Dial plate calibrated counterclockwise 0 to 100 over 180°.

6/ Dial plate calibrated counterclockwise 0 to 100 over 270°.

7/ Dial plate calibrated counterclockwise 0 to 100 over 360°.

8/ Indicator filled with permanent white.

9/ Indicator punched out or translucent.

P.A. Other Cust	EC EL 11	TITLE KNOBS, CONTROL, ROUND, PLASTIC (WITH FLUTED GRIP)	MILITARY STANDARD MS 91531
PROCUREMENT SPECIFICATION MIL-K-3926	SUPERSEDES:	Page 3	

DD FORM 672-1 (Coordinated)

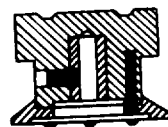
PREVIOUS EDITIONS OF THIS FORM ARE OBSOLETE

APPROVED 2 December 1965 REVISED (E) For changes see pages 1 and 7

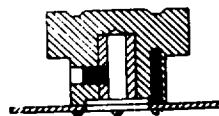
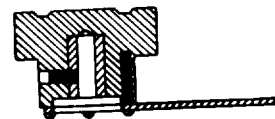
User activities:
Army - MJ
Navy - CG, MC, CS

Review activities:
Army - AT, AV, ME, MI
Navy - SH

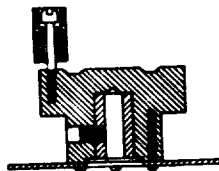
This military standard is mandatory for use by all Departments and Agencies of the Department of Defense. Selection for all new engineering and design applications and for repetitive use shall be made from this document.



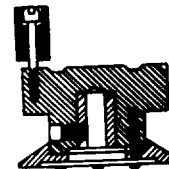
WITH SKIRT

WITH DIAL PLATE
PLAIN KNOB ASSEMBLIES

WITH POINTER



WITH DIAL PLATE



WITH SKIRT

SPINNER KNOB ASSEMBLIES

DASH NO. 1/	SIZE (DIA OF BODY)	COMPONENT PART		NOM SHAFT- HOLE DIA
		Knob dash No.	Access. dash No.	
PLAIN KNOBS WITH SKIRTS				
-1F1B	3/4	-1N1B	-1P	1/8
-1F1G		-1N1G		1/4
-1F2B		-1N2B		
-1F2G		-1N2G	-10	1/8
-101B		-1N1B		1/4
-101G		-1N1G		
-102B	1-1/8	-1N2B	-2F	1/4
-102G		-1N2G		
-2F2B		-2N2B		
-2F2G		-2N2G	-20	
-202B		-3N2B	-3F	
-202G		-3N2G	-30	
-3F2B	1-5/8	-4N2B	-4F	1/4
-3F2G		-4N2G	-40	
-302B	2-3/8	-4N2B	-4F	
-302G		-4N2G	-40	
-4F2B		-4N2B	-4F	
-4F2G		-4N2G	-40	
-402B	2-3/8	-4N2B	-4F	
-402G		-4N2G	-40	
PLAIN KNOBS WITH POINTERS				
-1P1B	3/4	-1N1B	-1P	1/8
-1P1G		-1N1G		1/4
-1P2B		-1N2B		
-1P2G	1-1/8	-1N2G	-2P	1/4
-2P2B		-2N2B		
-2P2G		-2N2G		
-3P2B	1-5/8	-3N2B	-3P	
-3P2G		-3N2G		
-4F2B	2-3/8	-4N2B	-4P	
-4F2G		-4N2G		

See footnote at end of table.

P.A. EC
Other Cust EL
11

TITLE KNOBS, CONTROL, ROUND PLASTIC
(WITH FLUTED GRIP)

MILITARY STANDARD

MS 91531

PROCUREMENT SPECIFICATION
MIL-K-2026

SUPERSEDES

Page 4

DD FORM 672-1 (Coordinated)

PREVIOUS EDITIONS OF THIS FORM ARE OBSOLETE

APPROVED 2 December 1955 REVISED E For changes see pages 1 and 7

This military standard is mandatory for use by all Departments and Agencies of the Department of Defense. Selection for all new engineering and design applications and for repetitive use shall be made from this document.

Review activities: User activities:
 Army - AT, AV, ME, MI Army - MU
 Navy - SH Navy - CG, MC, OS

FED. SUP CLASS
5355

DASH NO. 1/ 	SIZE (DIA OF BODY)	COMPONENT PART		NOM SHAFT- HOLE DIA			
		Knob dash No.	Access. dash No.				
PLAIN KNOBS WITH DIAL PLATES							
-1H1B	3/4	-1N1B	-1H	1/8			
-1H1G		-1N1G					
-1H2B		-1N2B	-1T	1/4			
-1H2G		-1N2G					
-1T1B		-1N1B	-1A	1/8			
-1T1G		-1N1G					
-1T2B		-1N2B	-1S	1/4			
-1T2G		-1N2G					
-1A1B		-1N1B	-1Q	1/8			
-1A1G		-1N1G					
-1A2B		-1N2B	-1C	1/4			
-1A2G		-1N2G					
-1S1B		-1N1B	-1Q	1/8			
-1S1G		-1N1G					
-1S2B		-1N2B	-1C	1/4			
-1S2G		-1N2G					
-1Q1B		-1N1B	-1C	1/8			
-1Q1G		-1N1G					
-1Q2B		-1N2B	-1C	1/4			
-1Q2G		-1N2G					
-1C1B		-1N1B	-1C	1/8			
-1C1G		-1N1G					
-1C2B		-1N2B	-1C	1/4			
-1C2G		-1N2G					
-2H2B	1-1/8	-2N2B -2N2G	-2H	1/4			
-2H2G			-2T				
-2T2B			-2A				
-2T2G			-2S				
-2A2B			-2Q				
-2A2G			-2C				
-2S2B			-3H		1/4		
-2S2G			-3T				
-2Q2B	1-5/8	-3N2B -3N2G	-3A				
-2Q2G			-3S				
-2C2B			-3Q				
-2C2G			-3C				
-3H2B			2-3/8	-4N2B -4N2G		-4H	1/4
-3H2G						-4T	
-3T2B					-4A		
-3T2G					-4S		
-3A2B	-4Q						
-3A2G	-4C						
-3S2B							
-3S2G							
-3Q2B							
-3Q2G							
-3C2B							
-3C2G							
-4H2B	2-3/8	-4N2B -4N2G	-4H	1/4			
-4H2G			-4T				
-4T2B			-4A				
-4T2G			-4S				
-4A2B			-4Q				
-4A2G			-4C				
-4S2B							
-4S2G							
-4Q2B							
-4Q2G							
-4C2B							
-4C2G							

See footnote at end of table.

P.A. EC Other Cont. EL 11	TITLE KNOBS, CONTROL, ROUND, PLASTIC (WITH FLUTED GRIP)	MILITARY STANDARD MS 91531
PROCUREMENT SPECIFICATION MIL-K-3926	SUPERSEDES:	Page 5

DD FORM 672-1 (Coordinated)

PREVIOUS EDITIONS OF THIS FORM ARE OBSOLETE.

APPROVED 2 December 1955 REVISED (E) For changes see pages 1 and 7

Review activities: User activities:
 Army - AT, AV, ME, MI
 Navy - SH
 Army - MU
 Navy - CG, MC, OS

This military standard is mandatory for use by all Departments and Agencies of the Department of Defense. Selection for all new engineering and design applications and for repetitive use shall be made from this document.

FED. SUP CLASS
5355

DASH NO.	SIZE (DIA OF BODY)	COMPONENT PART		NOM SHAFT-HOLE DIA
		Knob dash No.	Access. dash No.	
SPINNER KNOBS WITH DIAL PLATES				
-4B2B	2-3/8	-4B2B -4B2G	-4H	1/4
-4B2G			-4T	
-4B2B			-4A	
-4B2G			-4S	
-4B2B			-4Q	
-4B2G			-4C	
-4B2B				
-4B2G				
-4B2B				
SPINNER KNOBS WITH SKIRTS				
-4B2B	2-3/8	-4B2B -4B2G	-4F	1/4
-4B2G			-4Q	
-4B2B				
-4B2G				

The dash number added to the MS military-standard number constitutes the MS part number; for example, MS91531-1F1B. The dash number indicates the following: First character - knob size; second character - accessory (dial plate, pointer, skirt, spinner); third character - shaft-hole diameter; fourth character - "B" lusterless black No. 37038 and "G" lusterless gray No. 36231 per Fed. Std. No. 595.

APPROVED 2 December 1966 REVISED (E) For changes see pages 1 and 7

P.A. Other Code EC EL 11	TITLE KNOBS, CONTROL, ROUND, PLASTIC (WITH FLUTED GRIP)	MILITARY STANDARD MS 91531
PROCUREMENT SPECIFICATION MIL-K-3926	SUPERSEDES:	Page 6

This military standard is mandatory for use by all Departments and Agencies of the Department of Defense. Selection for all new engineering and design applications and for repetitive use shall be made from this document.

Review activities:
Army - AT, AV, ME, MI
Navy - SH

User activities:
Army - MU
Navy - CG, MC, OS

FED. SUP CLASS
5355

1. All dimensions in inches.
2. Unless otherwise specified, tolerances are $\pm 1/64$ on fractions, ± 0.005 on decimals, and $\pm 1^\circ$ on angles.
3. Materials:

Knob (including spinner body) skirt, and pointer - Plastic, type III, per Specification L-P-398, or type CPG, per Specification MIL-M-14.

Dial plate - Aluminum per Specification QQ-A-250/8 or QQ-A-250/1, or brass per Specification QQ-B-613; color lusterless black No. 37038 per Fed. Std. No. 598.

Set screws - Cadmium plating, class 3, type II, per Specification QQ-P-416, or zinc plating, class 3, type II, per Specification QQ-Z-325.

Knob inserts - Brass, composition M2, per Specification QQ-B-626, with class 3, type II, cadmium plating, per Specification QQ-P-416, before assembly; or aluminum alloy 7075 T6, per Specification QQ-A-277, anodized per Specification MIL-A-8625, before assembly.

Spinner insert - Brass, composition M2, per Specification QQ-B-626, with type VI nickel matte finish, per Specification QQ-N-296.
4. Knobs are cored or solid. If cored, the set screws may be placed in the supporting ribs.
5. Break all sharp edges of upper gripping surfaces.
6. Knob assemblies may be furnished as integral units or as assemblies. When 3/4 knobs are furnished as assemblies, the parts are cemented together. For all other knobs, the parts are fastened together by screws as shown on sheet 4. For pointer knobs, the screw assembly may be omitted, and the inserts spun over, in which case they are staked.
7. Set screws - Type 1, style 4, per Specification FF-S-200; No. 4-40 UNC-3A is used for all 3/4 knobs and for 1/8 shafts; No. 8-32 UNC-3A is used for 1/4 shafts; 3/16 long for 3/4 knobs, 1/4 long for 1-1/8 knobs, 5/16 long for 1-5/8 knobs, and 3/8 long for 2-3/8 knobs.
8. Assembly screws - Pan head; MS part No. MS35214-3 for 1-1/8 knobs, and MS part No. MS35214-25 for all other size knobs.
9. Insert-wall thickness - 1/16 minimum for 3/4 and 1-1/8 knobs, and 1/8 minimum for 1-5/8 and 2-3/8 knobs. Inserts are open end or closed end.
10. Torque test - 25 pound-inches for all knobs up to and including 1-1/8 nominal body diameter and 50 pound-inches for all knobs above 1-1/8 nominal body diameter. For all diameter knobs with spinners, a 50 pound-inch force is applied to the end of the spinner handle, perpendicular to the plane of the two axes.
11. The impact test shall be in accordance with Specification L-P-398 or MIL-M-14, as applicable, in lieu of the impact test of MIL-K-3926.
12. Referenced documents shall be of the issue in effect on date of invitations for bid.
13. This standard takes precedence over documents referenced herein.
- (E)** 14. Qualification not applicable.

APPROVED 2 December 1955 REVISED **(E)** For changes see pages 1 and 7

P.A. EC	TITLE KNOBS, CONTROL, ROUND, PLASTIC (WITH FLUTED GRIP)	MILITARY STANDARD
Other Cust EL 11		MS 91531
Procurement Specification MIL-K-3926	SUPERSEDES:	Page 7

DD FORM 672 COORDINATED
1 SEP 57

PREVIOUS EDITIONS OF THIS FORM ARE OBSOLETE.

☆U.S. GOVERNMENT PRINTING OFFICE: 1972-714-162/4923