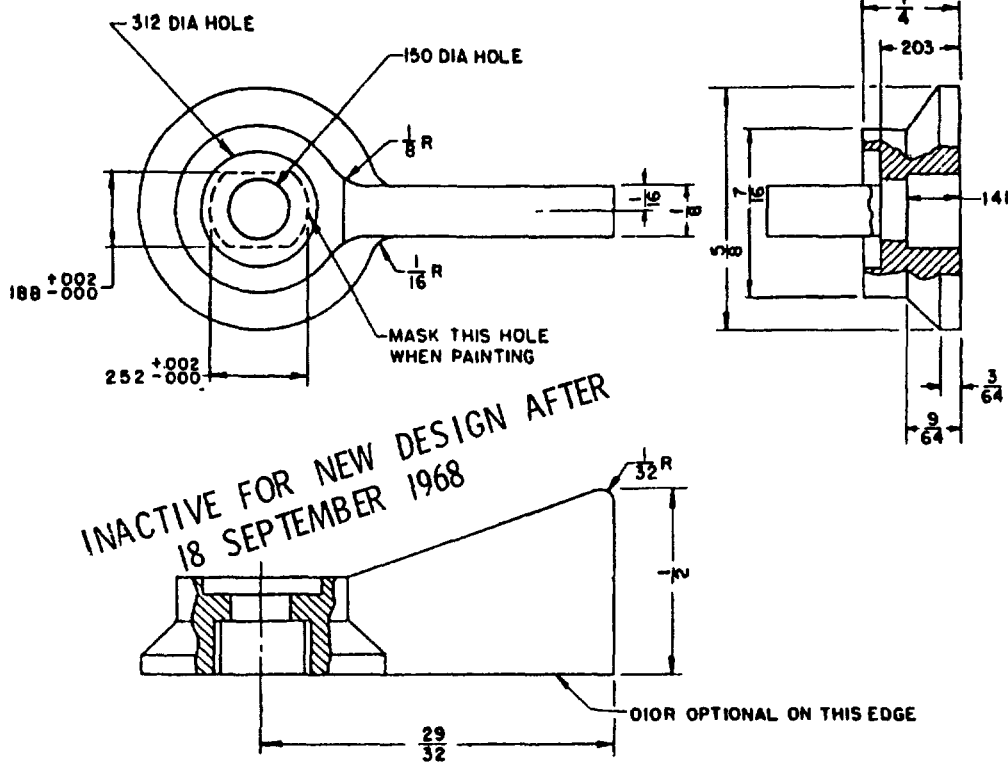


NOTES: When Government drawings, specifications, or other data are used for any purpose other than in connection with a definitely related Government procurement operation, the United States Government hereby disclaims any responsibility for the use of such data in any way, or for the results of any use thereof, or for the patentability or non-patentability of any invention or process that may be claimed by anyone as a result of the use of such data.

FED. SUP. CLASS.
5355



PART NO. MS91523-1 FIIN

NOTES

- 1 All dimensions in inches
- 2 Unless otherwise specified, tolerances are $\pm 1/64$ on fractions and $\pm .005$ on decimals
- 3 Break all corners and edges to .010 radius maximum
- 4 The casting shall be free of flash, sharp edges, shrink marks, and porosity
- 5 Plus taper .002 on both dimensions of flatted hole
- 6 Material shall be aluminum alloy, composition 1, per Specification QQ-A-596
- 7 The finish shall be semigloss olive drab, type 1, per Specification 72-53
- 8 Referenced specifications shall be of the issue in effect on date of invitation for bids
- 9 Qualification not required. Quality conformance testing shall be in accordance with Groups A, B and C as required on contracts requiring logistic support

REQUIREMENTS

- 1 Torque test not applicable

(Project 5355-0091)

CUSTODIANS: Army - EL Air Force - 11	OTHER INT. A — EO	MILITARY STANDARD		MS 91523
		KNOB, CONTROL, LEVER, METAL		
PROCUREMENT SPECIFICATION MIL-K-3926		SUPERSEDES		SHEET 1 OF 1

APPROVED 15 Sep 1954

REVISED 18 Sep 1968

REVISION B

6 February 1970