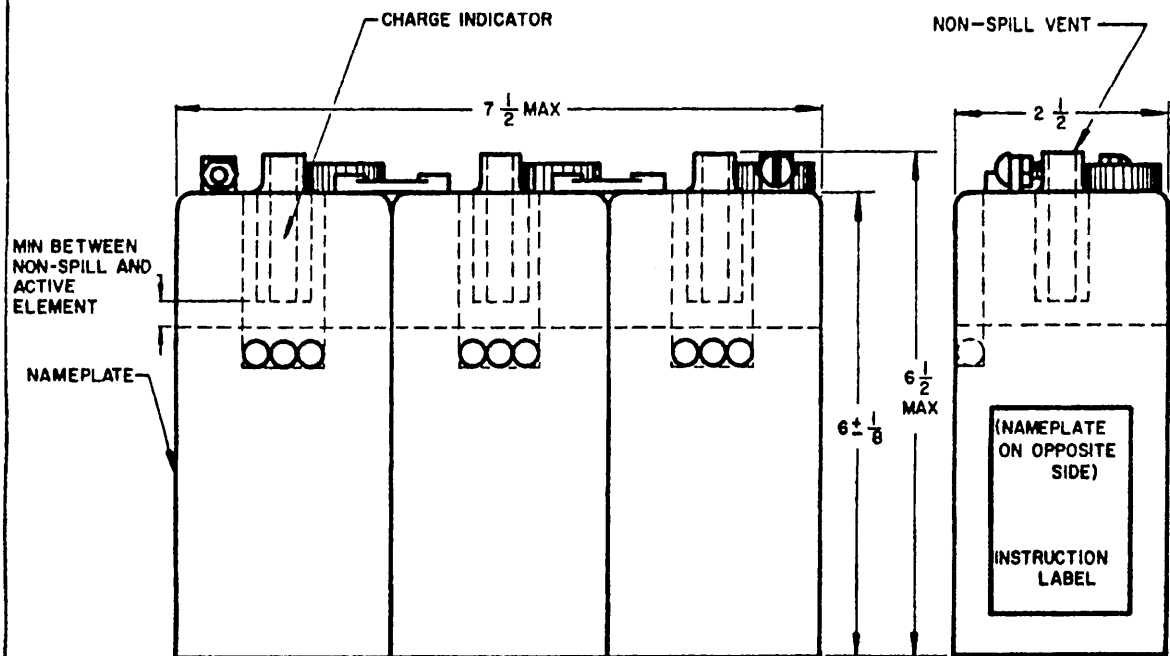
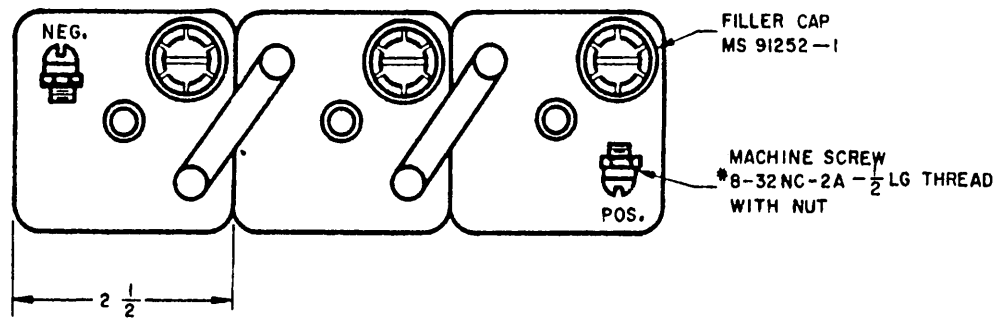


REVIEWERS: ARMY-EL; NAVY-DOCKS; AF-ROAMA
 USERS: ARMY-GL; NAVY-MC, SHIPS, WEPS

FED. SUP CLASS
 6140



(A) ENTIRE STANDARD REVISED

This military standard is approved by the Department of Defense and is mandatory on all activities. Selection for all new procurement and design applications and for repetitive use shall be made from this document.

P.A. MO (ATAC) Other Cust NAVY - Docks AF - ROAMA	TITLE BATTERY, STORAGE, LEAD-ACID PORTABLE, BB-247/U	MILITARY STANDARD	
		MS 91327	
PROCUREMENT SPECIFICATION MIL-B-11188	SUPERSEDES	SHEET 1 OF 2	

DD FORM 672-1

APPROVED 18 JULY 1956 REVISED (A) 11 JUNE 1964

FED. SUP CLASS
6140

REVIEWERS: ARMY-EL; NAVY-DOCKS; AF-ROAMA
 USERS: ARMY-GL; NAVY-MC, SHIPS, WEPS

PHYSICAL AND ELECTRICAL REQUIREMENTS	
MS PART NUMBER	MS 91327-247
CLASS	ER
WEIGHT (FILLED)	9 POUNDS, MAXIMUM
NOMINAL VOLTAGE	6 VOLTS
FINAL VOLTAGE AT 20-HOUR RATE	5.25 VOLTS
RATED CAPACITY AT 20 HOUR RATE	20 AMPERE-HOURS
DISCHARGE AT 20-HOUR RATE	1 AMPERES
CHARGING RATE	2 AMPERES

QUALIFICATION AND QUALITY CONFORMANCE INSPECTIONS	
TEST	MINIMUM VALUE
FILLED DISCHARGE AT 80° F	15 AMPERE-HOURS
FULL CHARGE CAPACITY AT 80° F	20 AMPERE-HOURS
LOW TEMP PERFORMANCE AT MINUS 40° F	6 AMPERE-HOURS
LIFE CYCLE CAPACITY TEST II	125 CYCLES
RETENTION OF CHARGE	14 AMPERE-HOURS

NOTES:

1. UNLESS OTHERWISE SPECIFIED, DIMENSIONS ARE IN INCHES. TOLERANCES ARE $\pm 1/16$.
2. THE MS PART NUMBER CONSISTS OF THE MS MILITARY STANDARD NUMBER FOLLOWED BY A DASH NUMBER. THE DASH NUMBER "247" IS DERIVED FROM ASSIGNED NOMENCLATURE.
3. REFERENCED DOCUMENTS SHALL BE OF THE ISSUE IN EFFECT ON DATE OF INVITATIONS FOR BID.
4. FOR DESIGN FEATURE PURPOSES, THIS STANDARD TAKES PRECEDENCE OVER PROCUREMENT DOCUMENTS REFERENCED HEREIN.
5. THIS STANDARD IS NOT INTENDED TO LIMIT CONSTRUCTION TO FEATURES OTHER THAN AS SHOWN HEREON BY DIMENSIONS, NOTATIONS, OR REFERENCED DOCUMENTS.

This military standard is approved by the Department of Defense and is mandatory on all activities. Selection for all new engineering and design applications and for repetitive use shall be made from this document.

P.A. MO(ATAC) Other Cust NAVY - Docks AF - ROAMA	TITLE BATTERY, STORAGE, LEAD-ACID PORTABLE, BB-247 / U	MILITARY STANDARD MS 91327
PROCUREMENT SPECIFICATION MIL-B-111188	SUPERSEDES:	SHEET 2