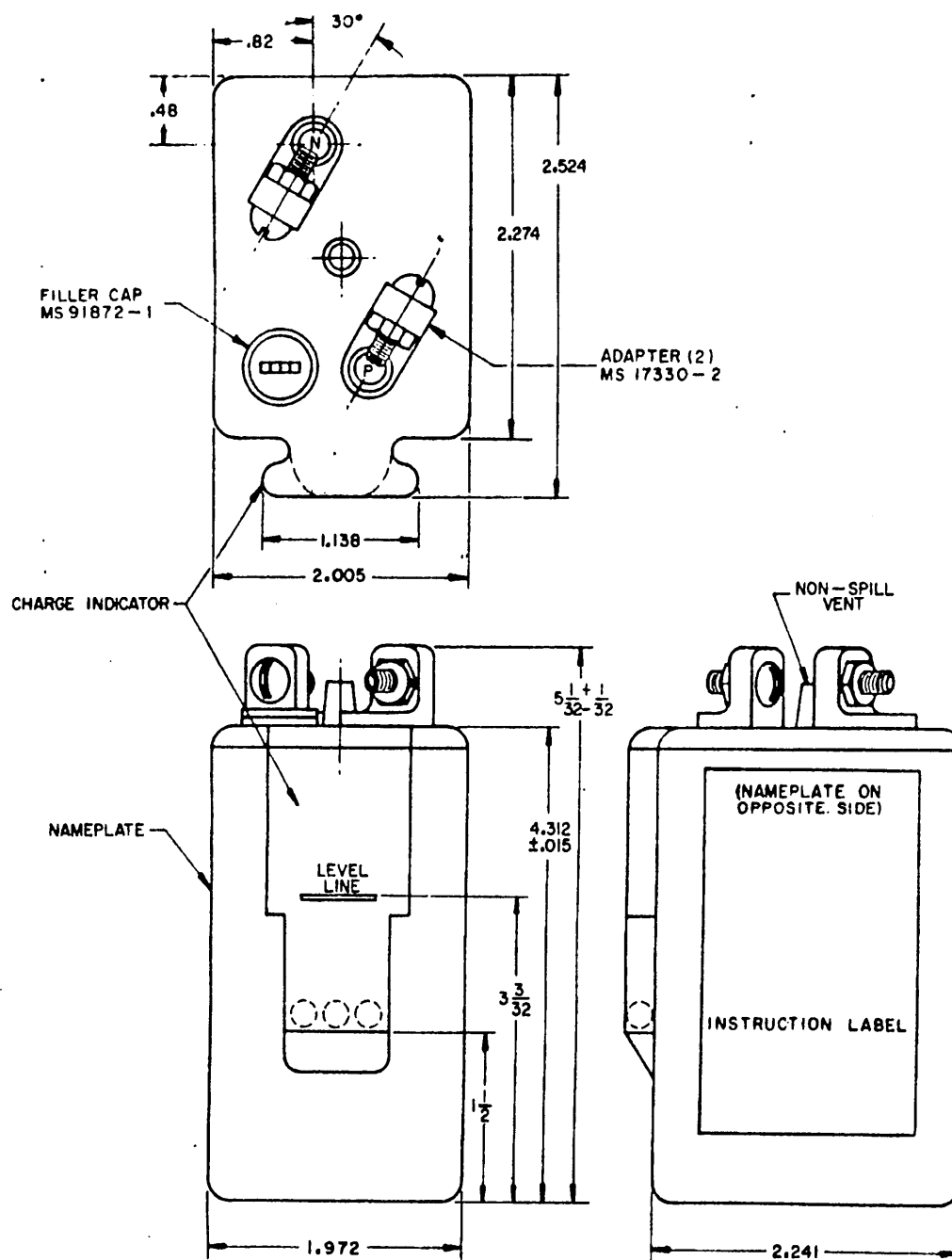


FED. SUP CLASS  
6140

REVIEWERS: ARMY-EL; NAVY-DOCKS; AF-ROAMA  
 USERS: ARMY-GL; NAVY-MC, SHIPS, WEPS



© ENTIRE STANDARD REVISED

P.A. MO (ATAC)

Other Cust

Navy- Docks

AF-ROAMA

PROCUREMENT SPECIFICATION  
MIL-B-11188

TITLE

BATTERY, STORAGE, LEAD-ACID,  
PORTABLE, BB-239/U

SUPERSEDES

MILITARY STANDARD

MS 91321

SHEET 1 OF 2

APPROVED 18 JULY 1956 REVISED © 11 JUNE 1964

This military standard is approved by the Department of Defense and is mandatory on all activities. Substitution for all non-engineering and design applications and for repetitive use shall be made from this document.

FED. SUP CLASS  
6140

REVIEWERS: ARMY-EL; NAVY--DOCKS; AF-ROAMA  
 USERS: ARMY-GL; NAVY--MC, SHIPS, WEPS

PHYSICAL AND ELECTRICAL REQUIREMENTS	
MS PART NUMBER	MS 91321-239
CLASS	ER
WEIGHT (FILLED)	1.75 POUNDS, MAXIMUM
NOMINAL VOLTAGE	2 VOLTS
FINAL VOLTAGE AT 20-HOUR RATE	1.75 VOLTS
RATED CAPACITY AT 20-HOUR RATE	9.5 AMPERE-HOURS
DISCHARGE AT 20-HOUR RATE	0.475 AMPERES
CHARGING RATE	1 AMPERES

QUALIFICATION AND QUALITY CONFORMANCE INSPECTIONS	
TEST	MINIMUM VALUE
FILLED DISCHARGE AT 80°F	7.1 AMPERE-HOURS
FULL CHARGE CAPACITY AT 80°F	9.5 AMPERE-HOURS
LOW TEMP PERFORMANCE AT MINUS 40°F	2.5 AMPERE-HOURS
LIFE CYCLE CAPACITY TEST II	200 CYCLES
RETENTION OF CHARGE	6.65 AMPERE-HOURS

## NOTES:

1. UNLESS OTHERWISE SPECIFIED, DIMENSIONS ARE INCHES. TOLERANCES ARE  $\pm 1/16$  ON FRACTIONS,  $\pm 0.010$  ON DECIMALS, AND  $\pm 1 1/2^\circ$  ON ANGLES.
2. PHENOLIC INSULATING WASHER, OPTIONAL.
3. THE MS PART NUMBER CONSISTS OF THE MS MILITARY STANDARD NUMBER FOLLOWED BY A DASH NUMBER. THE DASH NUMBER "239" IS DERIVED FROM ASSIGNED NOMENCLATURE.
4. REFERENCED DOCUMENTS SHALL BE OF THE ISSUE IN EFFECT ON DATE OF INVITATIONS FOR BID.
5. FOR DESIGN FEATURE PURPOSES, THIS STANDARD TAKES PRECEDENCE OVER PROCUREMENT DOCUMENTS REFERENCED HEREIN.
6. THIS STANDARD IS NOT INTENDED TO LIMIT CONSTRUCTION TO FEATURES OTHER THAN AS SHOWN HEREON BY DIMENSIONS, NOTATIONS, OR REFERENCED DOCUMENTS.

This military standard is approved by the Department of Defense and is mandatory on all activities. Selection for all new engineering and design applications and for repetitive use shall be made from this document.

P.A. MO(ATA)	TITLE	MILITARY STANDARD
Other Cust Navy-Docks AF-ROAMA	BATTERY, STORAGE, LEAD-ACID, PORTABLE, BB-239/U	MS 91321
PROCUREMENT SPECIFICATION ML-B-11188	SUPERSEDES.	SHEET 2

DD FORM 672-1

APPROVED 18 JULY 1956 REVISED 11 JUNE 1964