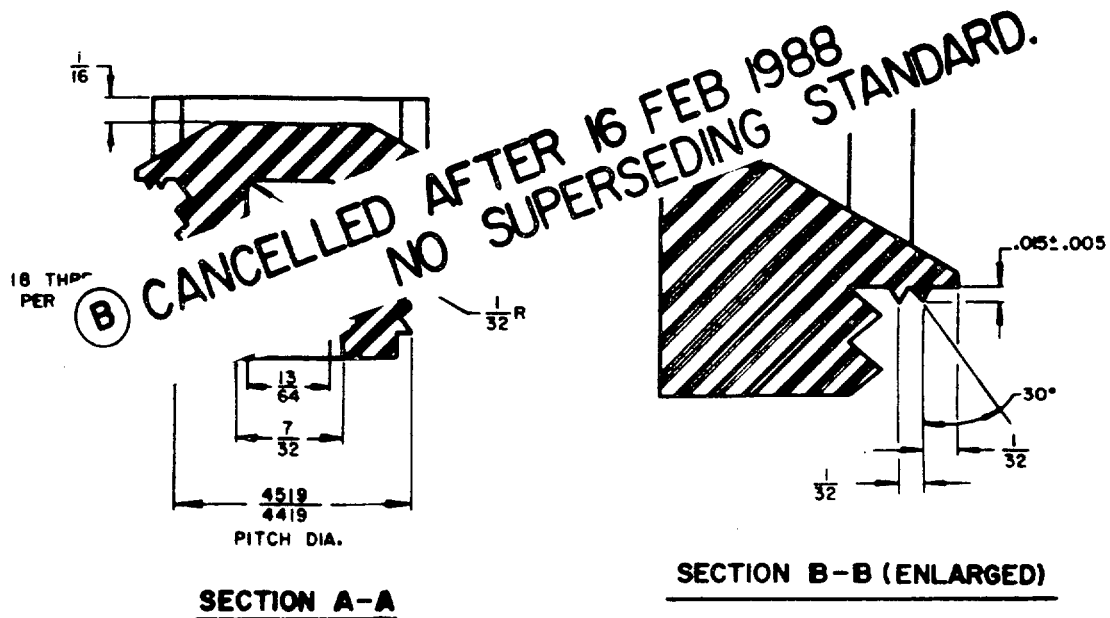
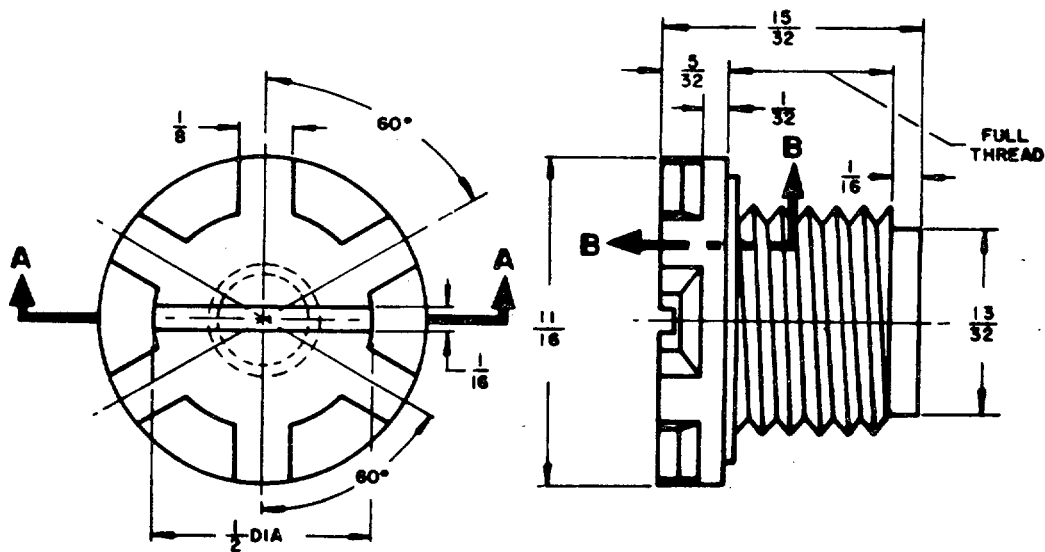


FED. SUP CLASS
6140

REVIEWERS: ARMY-EL; NAVY-DOCKS; AF-ROAMA
USERS: ARMY-GL; NAVY-MC, SHIPS, WEPS



(A)

NOTES:

1. UNLESS OTHERWISE SPECIFIED, DIMENSIONS ARE IN INCHES. TOLERANCES ARE $\pm 1/64$ ON FRACTIONS AND $\pm 1/20$ ON ANGLES.
2. REFERENCED DOCUMENTS SHALL BE OF THE ISSUE IN EFFECT ON DATE OF INVITATION FOR BID.
3. THIS STANDARD TAKES PRECEDENCE OVER DOCUMENTS REFERENCED HEREIN.

MS PART NO.
MS 91252-1

P.A. MO (ATAC)	TITLE	MILITARY STANDARD
Other Cust NAVY-Docks AF-ROAMA	FILLER CAP, BATTERY	MS 91252
PROCUREMENT SPECIFICATION MIL-B-11188	SUPERSEDES:	SHEET 1 OF 1

This military standard is approved by the Department of Defense and is mandatory on all activities. Selection for all new engineering and design applications and for repetitive use shall be made from this document.