

INCH-POUND

MS9060C

22 JULY 2005

Superseding

MS9060B

8 AUGUST 1986

MILITARY SPECIFICATION SHEET

BOLT, MACHINE-DOUBLE HEXAGON, EXTENDED WASHER HEAD,
CORROSION AND HEAT RESISTANT STEEL, DRILLED, .190-32 NS

Inactive for new design after 31 DEC 1963.

This specification sheet is approved for use by all Departments and Agencies of the Department of Defense.

The requirements for acquiring the product described herein shall consist of this specification sheet.

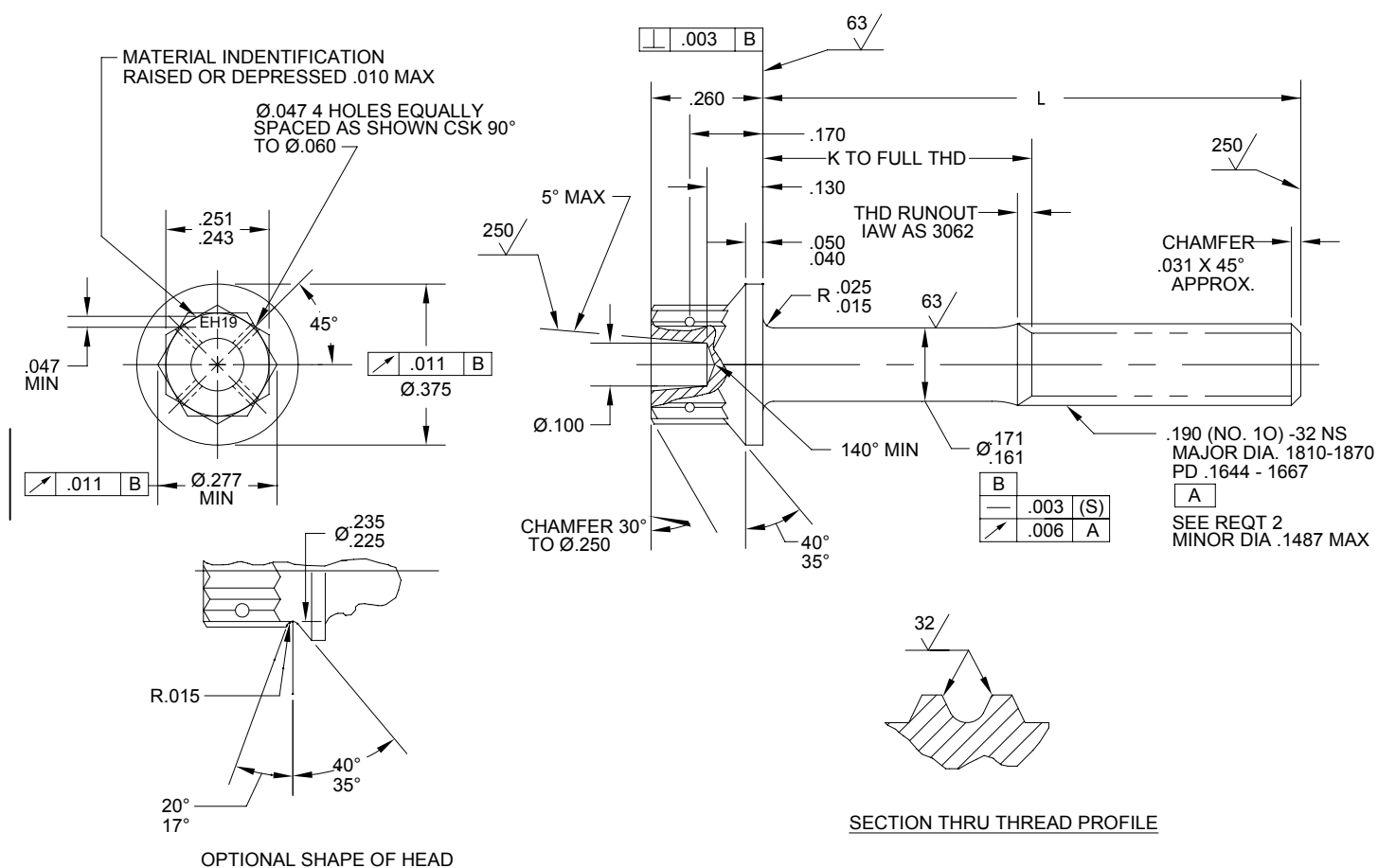


FIGURE 1

MS9060C

Table I. Dash numbers and dimensions.

DASH NUMBE R	L	K +.000 -.060	APPROX WEIGHT LBS/100	DASH NUMBE R	L	K +.000 -.060	APPROX WEIGHT LBS/100
-05	.438	<u>1</u> /	.95	-23	1.562	.938	1.67
-06	.500	<u>1</u> /	.99	-24	1.625	1.000	1.71
-07	.562	<u>1</u> /	1.03	-25	1.688	1.062	1.75
-08	.625	<u>1</u> /	1.07	-26	1.750	1.125	1.79
-09	.688	<u>1</u> /	1.11	-27	1.875	1.250	1.87
-10	.750	.125	1.15	-28	2.000	1.375	1.95
-11	.812	.188	1.19	-29	2.125	1.500	2.03
-12	.875	.250	1.23	-30	2.250	1.625	2.11
-13	.938	.312	1.27	-31	2.375	1.750	2.19
-14	1.000	.375	1.31	-32	2.500	1.875	2.27
-15	1.062	.437	1.35	-33	2.625	2.000	2.35
-16	1.125	.500	1.39	-34	2.750	2.125	2.43
-17	1.188	.562	1.43	-35	2.875	2.250	2.51
-18	1.250	.625	1.47	-36	3.000	2.375	2.59
-19	1.312	.688	1.51				
-20	1.375	.750	1.55				
-21	1.438	.812	1.59				
-22	1.500	.875	1.63				

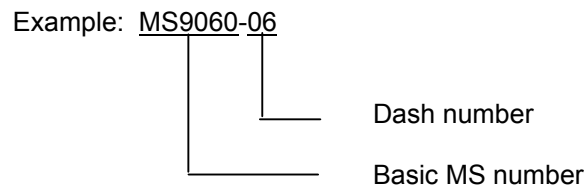
1/ Thread to head. Maximum two incomplete threads.

Requirements:

1. Material: Corrosion and heat resistant steel AMS 5732.
2. Threads: Threads in accordance with MIL-S-7742. Incomplete threads not to enter fillet.
3. Dimensioning and tolerancing: Dimensioning and tolerancing shall be in accordance with ANSI Y14.5M.
4. Fluorescent penetrant inspection: Fluorescent penetrant inspection per ASTM E1417.
5. Surface texture: Surface texture, unless otherwise specified, shall be 125 microinches, except upset head, in accordance with ANSI B46.1.
6. Tolerance: Unless otherwise specified, tolerances shall be for linear dimensions $\pm .010$, angular dimensions $\pm 5^\circ$.
7. Edges: Break sharp edges .003 - .015, unless otherwise specified.
8. Procurement specification: SAE-AS7478.

MS9060C

9. Part number: The part number shall consist of the basic MS number followed by a dash number from Table I.



MS9060-06 indicates: Bolt, Machine, CRES, Double Hexagon Extended Washer Head, Drilled; .190-32 NS; Length .500.

Notes:

1. All dimensions are in inches.
2. Do not use unassigned part numbers.
3. In the event of a conflict between the text of this standard and the references cited herein, the text of this standard shall take precedence.
4. Referenced government (or non government) documents of the issue listed in that issue of the Department of Defense Index of Specifications and Standards (DoDISS) specified in the solicitation form a part of this standard to the extent specified herein.
5. This standard was developed cooperatively with the SAE aerospace propulsion division.
6. AS and AMS are SAE publications.
7. Changes from previous issue. Marginal notations are not used in this revision to identify changes with respect to the previous issue due to the extent of the changes.

MILITARY INTEREST

Custodians:
 Army - AV
 Navy - AS

Preparing activity:
 DLA - IS

(Project 5306-2005-014)

NOTE: The activities listed above were interested in this document as of the date of this document. Since organizations and responsibilities can change, you should verify the currency of the information above using the ASSIST Online database at <http://assist.daps.dla.mil>