

INCH-POUND

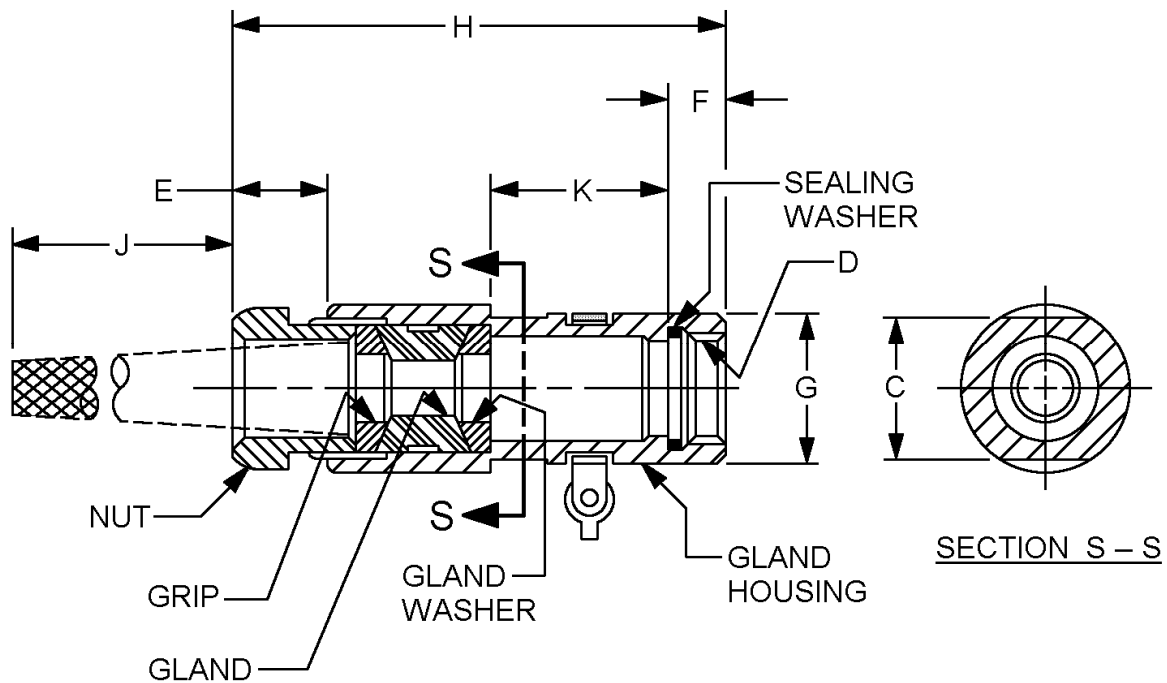
MS90569A
 26 October 2005
 SUPERSEDING
 MS90569
 25 May 1967

DETAIL SPECIFICATION SHEET

ADAPTER, STEP - UP, CABLE SEALING AND GRIPPING

This specification is approved for use by all Departments
 and Agencies of the Department of Defense

The requirements for acquiring the product described herein
 shall consist of this specification sheet and MIL-DTL-22992.

FIGURE 1. Adapter.

MS90569A

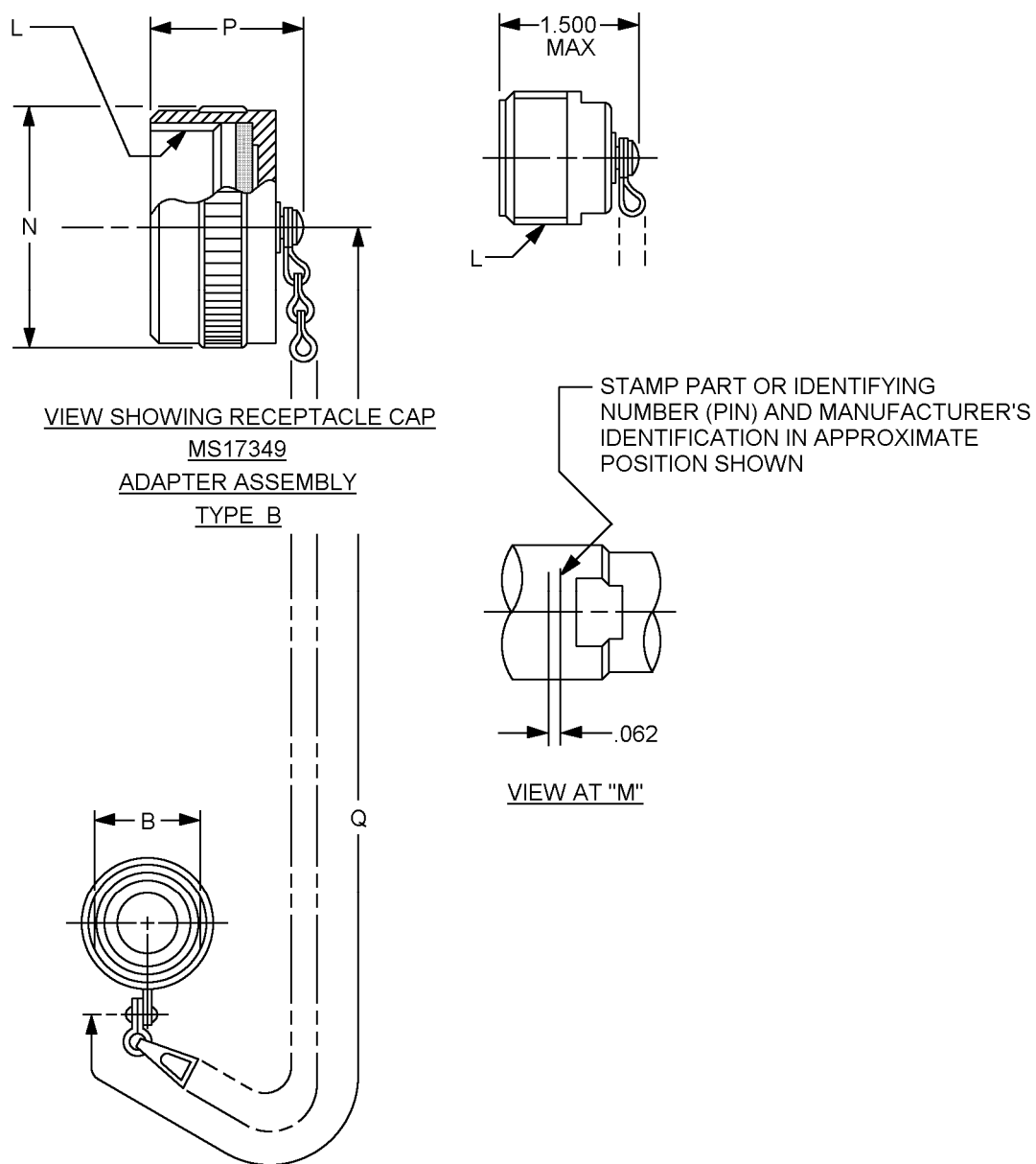


FIGURE 1. Adapter - Continued.

MS90569A

Adapt size no.	Size	Cable range		B +.000 -.010	C +.000 -.010	D thread class 2B-LH	E Free large max	F ±.016	G dia -.010 -.020	
		max dia	min dia							
1	12	.530	.436	1.000	.812	.7500-20UNEF	.597	.479	.938	
2		.500	.406	.875	.938		.539			
3		.405	.316	1.000	.812					
4	14	.625	.560	1.062	1.125	.8750-20 UNEF			1.062	
5		.605	.511	1.000	1.062					
6		.530	.436							
7		.405	.316							
8	18	.828	.715	1.125	1.250	1.1250-18UNEF			1.312	
9	20	1.055	.930	1.500	1.375	1.2500-18UNEF	.597		1.438	
10		1.000	.875							
11		.900	.787	1.250						
12		.750	.637							
13	22	1.109	.984	1.500	1.625	1.3750-18UNEF			1.562	
14		1.000	.875							
15	24	1.375	1.250	2.000	1.875	1.6250-18UNEF			1.812	
16		1.310	1.185	1.750						
17		1.230	1.105							
18		1.180	1.055							
19	28	1.531	1.406	2.000	2.062	1.8750-16UN			2.062	
20		1.445	1.320							
21		1.375	1.250							
22	32	1.825	1.700	2.438	2.312	2.0625-16UN	.710		2.312	
23		1.730	1.605							
24		1.656	1.531				2.250			.597
25	36	2.062	1.917	2.750	2.500	2.3125-16UN	.710		2.562	
26		1.984	1.859	2.438						
27		1.900	1.775							
28		1.825	1.700							
29		1.730	1.605							
30	40	2.375	2.230	2.875	2.812	1.6250-16UN	.709 .710	.667	2.875	
31		2.250	2.105	2.750	2.625	2.6250-16UN				
32		2.145	2.000							
33		2.062	1.917							

FIGURE 1. Adapter - Continued.

MS90569A

Inches	mm	Inches	mm	Inches	mm	Inches	mm
0.062	1.575	0.787	19.990	1.320	33.528	1.917	48.692
0.316	8.026	0.812	20.625	1.375	34.925	1.984	50.394
0.405	10.287	0.828	21.031	1.406	35.712	2.000	50.800
0.406	10.312	0.875	22.225	1.438	36.525	2.062	52.375
0.436	11.074	0.900	22.860	1.445	36.703	2.105	53.467
0.479	12.167	0.930	23.622	1.500	38.100	2.145	54.483
0.500	12.700	0.938	23.825	1.531	38.887	2.230	56.642
0.511	12.979	0.984	24.994	1.562	39.675	2.250	57.150
0.530	13.462	1.000	25.400	1.605	40.767	2.312	58.725
0.539	13.691	1.055	26.797	1.625	41.275	2.375	60.325
0.560	14.224	1.062	26.975	1.656	42.062	2.438	61.925
0.597	15.164	1.105	28.067	1.700	43.180	2.500	63.500
0.605	15.367	1.109	28.169	1.730	43.942	2.562	65.075
0.625	15.875	1.125	28.575	1.750	44.450	2.625	66.675
0.637	16.180	1.180	29.972	1.775	45.085	2.750	69.850
0.667	16.942	1.185	30.099	1.812	46.025	2.812	71.425
0.709	18.009	1.230	31.242	1.825	46.355	2.875	73.025
0.710	18.034	1.250	31.750	1.859	47.219		
0.715	18.161	1.310	33.274	1.875	47.625		
0.750	19.050	1.312	33.325	1.900	48.260		

FIGURE 1. Adapter - Continued.

MS90569A

Adapt size no.	Size	H max	J approx free length	K +.015 -.025	L thread (plated) class 2(A or B)	N dia max	P max	Q within one link
1	12	3.810	4.688	1.219	.8750-0-1P-0.2I-DS	1.094	.765	5.00
2		3.248	4.344	.871				
3		3.810	3.688	1.219				
4	14	4.024	6.188	1.371	1.0000-1P-0.2I-DS	1.219		
5		3.712	5.188	1.121				
6			4.688					
7			3.688					
8	18	4.087	6.688	1.343	1.2500-1P-0.2I-DS	1.469	.980	6.00
9	20	4.212	7.688	1.371	1.3750-1P-0.2I-DS	1.562		
10			7.188					
11		4.150						
12			7.688					
13	22	4.212	7.188	1.5000-1P-0.2I-DS	1.688			
14			7.188					
15	24	4.275	9.688	1.309	1.7500-1P-0.2I-DS	1.938		
16			8.688					
17			8.188					
18								
19	28	4.337	10.688	1.371	2.0000-1P-0.2I-DS	2.219		
20			9.688					
21								
22	32	4.704	13.688	1.375	2.2500-1P-0.2I-DS	2.469		
23			13.688					
24			4.399					12.688
25	36	4.704	14.188	1.375	2.5000-1P-0.2I-DS	2.719		
26		4.673	13.688	1.344				
27								
28								
29								
30	40	5.000	18.188	1.421	2.7500-0-0.2L-DS	2.969		
31			17.188					
32		4.939	14.188	1.422				
33								

FIGURE 1. Adapter - Continued.

MS90569A

Inches	mm	Inches	mm	Inches	mm
0.765	19.431	2.219	56.363	4.704	119.482
0.871	22.123	2.469	62.713	4.939	125.451
0.980	24.892	2.719	69.063	5.000	127.000
1.094	27.788	2.969	75.413	5.188	131.775
1.121	28.473	3.248	82.499	6.000	152.400
1.219	30.963	3.688	93.675	6.188	157.175
1.309	33.249	3.712	94.285	6.688	169.875
1.343	34.112	3.810	96.774	7.188	182.575
1.344	34.138	4.024	102.210	7.688	195.275
1.370	34.798	4.087	103.810	8.188	207.975
1.371	34.823	4.150	105.410	8.688	220.675
1.372	34.849	4.212	106.985	9.688	246.075
1.375	34.925	4.275	108.585	10.688	271.475
1.421	36.093	4.337	110.160	12.688	322.275
1.422	36.119	4.344	110.338	13.688	347.675
1.469	37.313	4.399	111.735	14.188	360.375
1.562	39.675	4.673	118.694	17.188	436.575
1.688	42.875	4.688	119.075	18.188	461.975
1.938	49.225				

NOTES:

1. Dimensions are in inches. Metric equivalents are given for information only.
2. Unless otherwise specified, tolerance for decimals is $\pm .016$ (.41 mm).
3. It is intended that connectors and their associated accessories be of the same finish (see requirements).

FIGURE 1. Adapter - Continued.

MS90569A

REQUIREMENTS:

Design and construction, see figure 1.

The adapters are for use with class R and C connectors shown on MS17343, MS71344, MS17345, and MS17347.

Adapter finish shall be designated by the letter C (conductive) or N (non-conductive).

Adapter assembly type shall be designated as A or B.

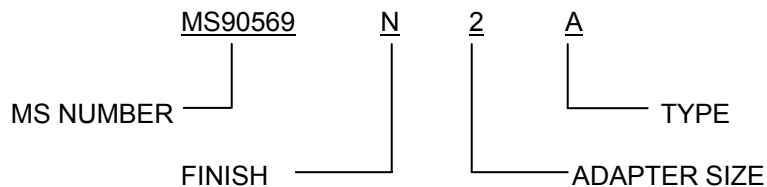
Type A is for use with connector MS17344.

Type B is for use with connectors MS17343, MS17345, and MS17347.

Adapter, cap and chain is considered a complete assembly.

Chain shall be passivated corrosion resistant (stainless) steel in accordance with type II, class 3, trade number 8 of RR-C-271 and shall be within one link or the length specified herein.

PIN example:



Changes from previous issue. Marginal notations are not used in this revision to identify changes with respect to the previous issue due to the extent of the changes.

Referenced documents. In addition to MIL-DTL-22992, this document references the following:

MS17343
 MS17344
 MS17345
 MS17347
 MS17349
 RR-C-271

MS90569A

CONCLUDING MATERIAL

Custodians:

Army – CR
Navy – EC
Air Force – 11
DLA – CC

Preparing activity:

DLA – CC

Review activities:

Army – AV, MI
Navy – AS, CG, MC, OS, SH
Air Force – 19

(Project 5935–4719–018)

NOTE: The activities listed above were interested in this document as of the date of this document. Since organizations and responsibilities can change, you should verify the currency of the information above using the ASSIST Online database at <http://assist.daps.dla.mil>.