

INCH-POUND

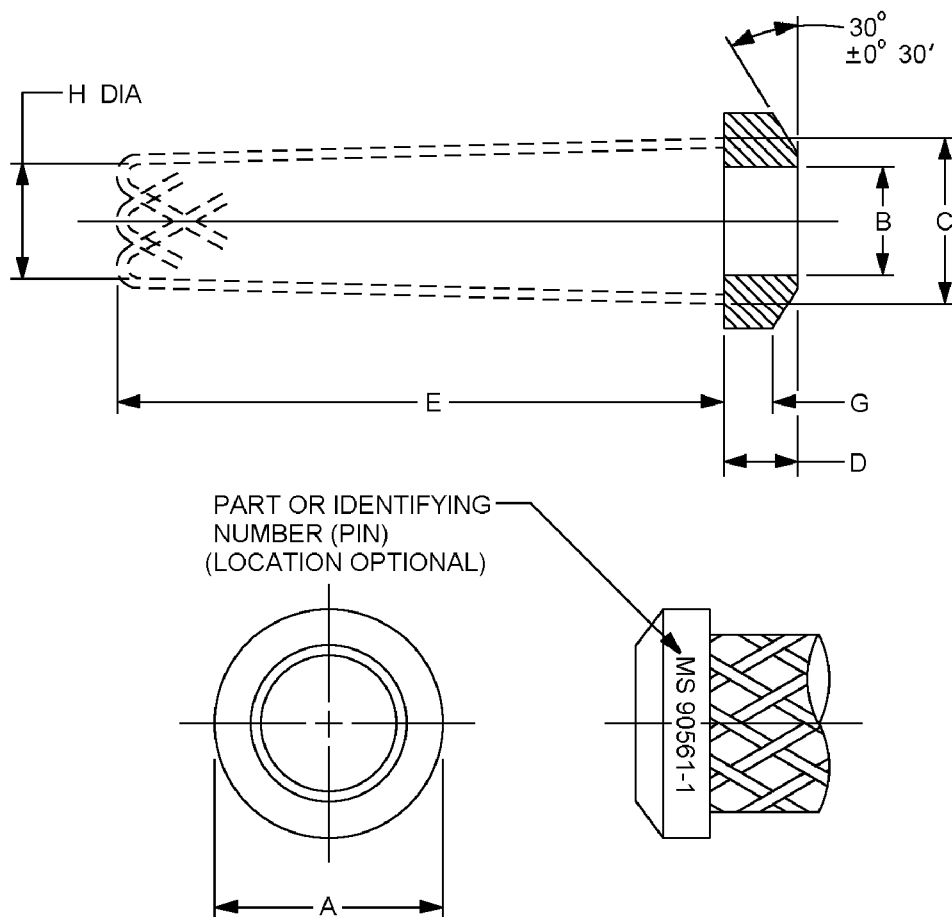
MS90561G  
w/AMENDMENT 2  
6 June 2011  
SUPERSEDING  
MS90561G  
w/AMENDMENT 1  
15 April 2009

## DETAIL SPECIFICATION SHEET

## GRIP, CABLE, WOVEN, STRAIN RELIEF, AXIAL

This specification is approved for use by all Departments  
and Agencies of the Department of Defense.

The requirements for acquiring the product described herein  
shall consist of this specification sheet and MIL-DTL-22992.

FIGURE 1. Dimensions and configuration.

MS90561G  
w/AMENDMENT 2

MS PIN	Arrangement number	A dia + .000 - .010	B dia + .020 - .000	C dia max	D collar length ± .015
90561-1	28-03, -05, -06 32-02, 32-04	1.797	.969	1.506	.450
-2	28-13, 32-03 32-05, 32-12	1.797	1.145	1.506	.413
-3	32-07	1.797	1.260	1.506	.368
-4	28-02, 29-04	1.797	.844	1.506	.485
-5	44-02, 44-04	2.235	1.312	1.944	.477
-6	44-06	2.235	1.375	1.944	.459
-7	48-13	2.672	2.062	2.418	.500
-8	52-02	2.922	1.703	2.672	.680
-9	52-06	2.922	1.797	2.672	.653
-10	canceled	NO SUPERSEDING DATA			
-11	canceled	NO SUPERSEDING DATA			
-12	28-07, 28-12 32-06	1.797	1.047	1.506	.428
-13	32-13	1.797	1.342	1.506	.366
-14	44-03, 44-05	2.235	1.438	1.944	.441
-15	44-12	2.235	1.516	1.944	.419
-16	44-13	2.235	1.688	1.944	.375
-17	52-12	2.922	2.328	2.672	.497
-18	52-13	2.922	2.500	2.672	.453
-19	44-51	2.235	1.750	1.955	.325
-20	44-52	2.235	1.579	1.944	.406
-21	44-56	2.235	1.160	1.944	.520

FIGURE 1. Dimensions and configuration – Continued.

MS90561G  
w/AMENDMENT 2

MS PIN	Arrangement number	E approx.	G ± .005	H dia cable range	
				max	min
90561-1	28-03, -05, -06 32-02, 32-04	8.000	.250	.969	.832
-2	28-13, 32-03 32-05, 32-12	8.000	.250	1.145	1.003
-3	32-07	9.000	.250	1.260	1.055
-4	28-02, 29-04	7.500	.250	.844	.688
-5	44-02, 44-04	11.500	.250	1.312	1.156
-6	44-06	10.500	.250	1.375	1.219
-7	48-13	15.000	.369	2.062	1.867
-8	52-02	14.500	.369	1.703	1.414
-9	52-06	14.500	.369	1.797	1.508
-10	canceled	NO SUPERSEDING DATA			
-11	canceled	NO SUPERSEDING DATA			
-12	28-07, 28-12 32-06	8.000	.250	1.047	.891
-13	32-13	9.500	.250	1.342	1.185
-14	44-03, 44-05	10.500	.250	1.438	1.282
-15	44-12	11.500	.250	1.516	1.360
-16	44-13	13.500	.250	1.688	1.531
-17	52-12	18.000	.369	2.328	2.039
-18	52-13	19.000	.369	2.500	2.211
-19	44-51	12.500	.250	1.750	1.550
-20	44-52	12.000	.250	1.578	1.375
-21	44-56	8.000	.250	1.160	1.010

FIGURE 1. Dimensions and configuration - Continued.

MS90561G  
w/AMENDMENT 2

Inches	mm	Inches	mm	Inches	mm	Inches	mm
.250	6.35	.653	16.59	1.360	34.54	2.211	56.16
.325	8.26	.680	17.27	1.375	34.93	2.235	56.77
.340	8.64	.688	17.48	1.414	35.92	2.328	59.13
.366	9.30	.832	21.13	1.438	36.53	2.418	61.42
.368	9.35	.844	21.44	1.506	38.25	2.500	63.50
.369	9.37	.891	22.63	1.508	38.30	2.672	67.87
.375	9.53	.969	24.61	1.516	38.51	2.922	74.22
.406	10.31	1.003	25.48	1.531	38.89	7.500	190.50
.413	10.49	1.010	25.65	1.550	39.37	8.000	203.20
.419	10.64	1.047	26.59	1.578	40.08	9.000	228.60
.428	10.87	1.055	26.80	1.579	40.11	9.500	241.30
.441	11.20	1.145	29.08	1.688	42.88	10.500	266.70
.450	11.43	1.156	29.36	1.703	43.26	11.500	292.10
.453	11.51	1.160	29.46	1.750	44.45	12.000	304.80
.459	11.66	1.185	30.10	1.797	45.64	12.500	317.50
.477	12.12	1.219	30.96	1.867	47.42	13.500	342.90
.485	12.32	1.260	32.00	1.944	49.38	14.500	368.30
.497	12.63	1.282	32.56	1.955	49.66	15.000	381.00
.500	12.70	1.312	33.33	2.039	51.79	18.000	457.20
.520	13.21	1.342	34.09	2.062	52.38	19.000	482.60

NOTES:

1. Dimensions are in inches. Unless otherwise specified, tolerance is  $\pm .010$  inches (0.25 mm).
2. Metric equivalents are given for information only.
3. Material shall be corrosion resistant steel (CRES), type 18-8 or equivalent.

FIGURE 1. Dimensions and configuration - Continued.

REQUIREMENTS:

Design and construction: See figure 1.

Part or Identifying Number (PIN) example: MS90561-X (see figure 1). Full PIN marking shall be in accordance with MIL-DTL-22992, and shall include the "JAN brand" (JAN or J) certification marking. Magnetic permeability in accordance with MIL-DTL-22992 is not required.

MS90561G  
w/AMENDMENT 2

Qualification:

Visual and mechanical examination.  
Water immersion.  
Salt spray (corrosion).  
Tensile.  
Cable pull-out.

Group A sampling inspection. 100% inspection is not applicable. Sampling inspection shall be as specified in table I.

TABLE I. Group A sampling plan.

Lot size	Sampling size
1 to 13	100 percent
14 to 150	13 units
151 to 280	20 units
281 to 500	29 units
501 to 1,200	34 units
1,201 to 3,200	42 units

Amendment Notations. The margins of this specification are marked with vertical lines to indicate modifications generated by this amendment. This was done as a convenience only and the Government assumes no liability whatsoever for any inaccuracies in these notations. Bidders and contractors are cautioned to evaluate the requirements of this document based on the entire content irrespective of the marginal notations.

Referenced documents. This document references MIL-DTL-22992.

CONCLUDING MATERIAL

Custodians:

Army – CR  
Navy – EC  
Air Force – 85  
DLA – CC

Preparing activity:

DLA – CC

Review activities:

Army – AT, AV, CR4, MI  
Navy – AS, CG, MC, OS  
Air Force – 19, 99

(Project 5935–2011-019)

NOTE: The activities listed above were interested in this document as of the date of this document. Since organizations and responsibilities can change, you should verify the currency of the information above using the ASSIST Online database at <https://assist.daps.dla.mil>.