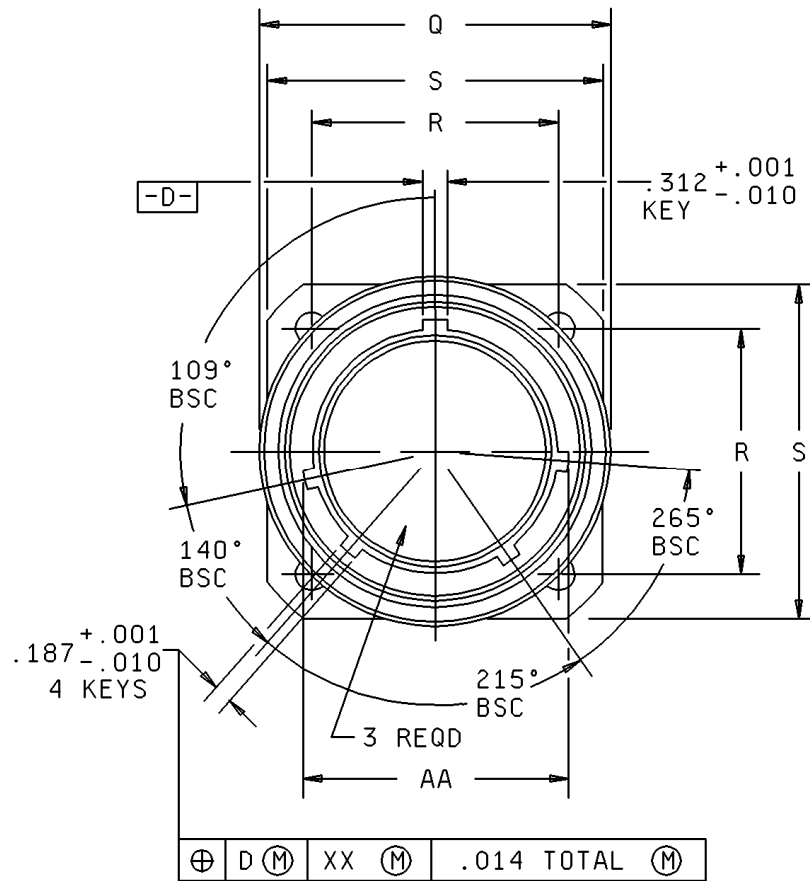


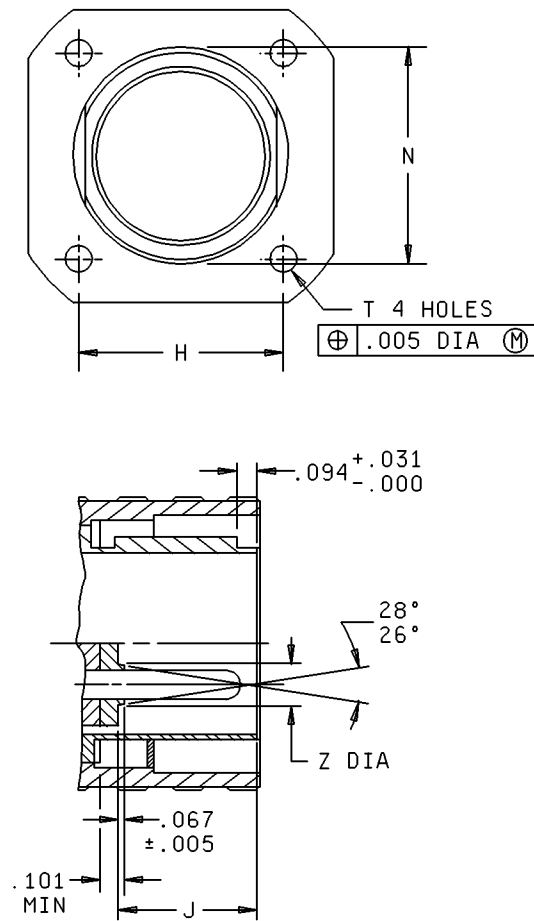
MS90558F



Inches	mm
.312	7.92
.187	4.75
.010	.254
.001	.047

FIGURE 1. Receptacle - Continued.

MS90558F



Inches	mm
.101	2.56
.094	2.39
.067	1.70
.031	.79
.005	.127

FIGURE 1. Receptacle - Continued.

MS90558F

Contact size	Z dia	V dia wire sealing range
4 / 0	.614 (15.60) / .624 (15.85)	.700 (17.78) / .790 (20.07)
2 / 0	.520 (13.21) / .530 (13.46)	.530 (13.46) / .655 (16.64)
1 / 0-1	.471 (11.96) / .481 (12.22)	.457 (11.61) / .585 (14.86)
4	.339 (8.61) / .349 (8.86)	.356 (9.04) / .430 (10.92)
6	.292 (7.42) / .302 (7.67)	.300 (7.62) / .360 (9.14)

Shell size	C $\pm .047$			F + .016 - .000	J $\pm .016$	K $\pm .005$	W $\pm .031$
	Phase	Neutral	Ground				
28	.196 (4.98)	.078 (1.98)	.078 (1.98)	2.639 (67.03)	1.370 (34.80)	1.557 (39.55)	1.062 (26.97)
32	.196 (4.98)	.078 (1.98)	.078 (1.98)	2.639 (67.03)	1.370 (34.80)	1.557 (39.55)	1.062 (26.97)
44	.196 (4.98)	.078 (1.98)	.547 (13.89)	2.998 (76.15)	1.589 (40.36)	1.776 (45.11)	1.281 (32.54)
48	.196 (4.98)	.078 (1.98)	.547 (13.89)	2.998 (76.15)	1.589 (40.36)	1.776 (45.11)	1.281 (32.54)
52	.196 (4.98)	.078 (1.98)	.547 (13.89)	2.998 (76.15)	1.589 (40.36)	1.776 (45.11)	1.281 (32.54)

FIGURE 1. Receptacle- Continued.

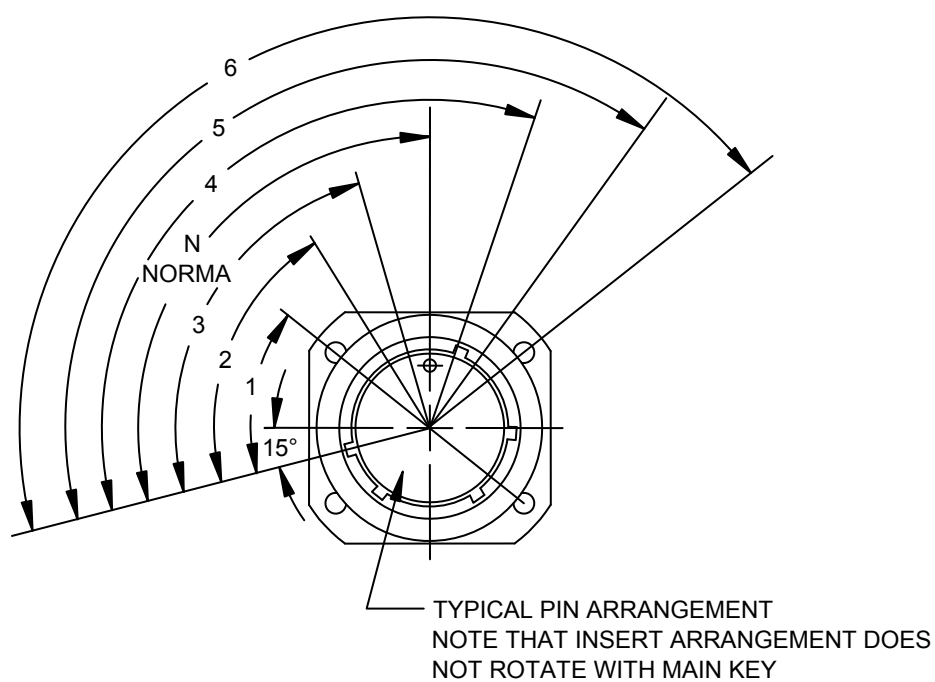
MS90558F

Shell size	A Thread class 2B	G dia + .006 - .010	H + .001 - .010	L $\pm .031$	M $\pm .047$	N + .011 - .020	Q dia max
28	2.000-.1428P-.2857L	1.938 (49.23)	1.812 (46.02)	.959 (24.36)	.328 (8.33)	2.000 (50.80)	2.312 (58.72)
32	2.250-.1428P-.2857L	2.188 (55.58)	2.062 (52.37)	.959 (24.36)	.328 (8.33)	2.250 (57.15)	2.562 (65.07)
44	3.000-.1428P-.2857L	3.062 (77.77)	2.812 (71.42)	1.021 (25.93)	.390 (9.91)	3.125 (79.38)	3.531 (89.69)
48	3.250-.1428P-.2857L	3.312 (84.12)	3.062 (77.77)	1.021 (25.93)	.390 (9.91)	3.375 (85.73)	3.781 (96.04)
52	3.500-.1428P-.2857L	3.562 (90.47)	3.312 (84.12)	1.021 (25.93)	.390 (9.91)	3.625 (92.08)	4.016 (102.01)

Shell size	R (BSC)	S + .021 - .020	T $\pm .005$	AA dia + .006 - .005	XX dia + .001 - .010	YY dia + .010 - .001
28	1.844 (46.84)	2.375 (60.33)	.177 (4.50)	1.672 (42.47)	1.522 (38.66)	1.370 (34.80)
32	2.062 (52.37)	2.625 (66.68)	.209 (5.31)	1.922 (48.82)	1.772 (45.01)	1.620 (41.15)
44	2.812 (71.42)	3.375 (85.73)	.281 (7.14)	2.672 (67.87)	2.522 (64.06)	2.296 (58.32)
48	3.000 (76.20)	3.625 (92.08)	.281 (7.14)	2.891 (73.43)	2.725 (69.22)	2.551 (64.80)
52	3.156 (80.16)	3.875 (98.43)	.281 (7.14)	3.141 (79.78)	2.975 (75.57)	2.801 (71.15)

FIGURE 1. Receptacle - Continued.

MS90558F



Nongrounding assemblies: finish N

Shell size	Shell main key positions
	2 wire
	28 V dc
28	N (105°)
32	N (105°)
44	N (105°)
48	N (105°)
52	N (105°)

FIGURE 1. Receptacle - Continued.

MS90558F

Grounding assemblies: finish C

Shell size	Shell main key positions						
	60 Hz & 400 Hz (see note 1)						
	1 Ø			3 Ø			3 Ø (see note 2)
	2 wire		3 wire	4 wire			3 wire
	120 V	240V	120/240 V	120/208 V	240/416 V	277/480 V	450/480 V
28	4 (120°)	5 (135°)	4 (120°)	4 (120°)	5 (135°)	6 (150°)	-----
32	4 (120°)	5 (135°)	4 (120°)	4 (120°)	5 (135°)	6 (150°)	-----
44	4 (120°)	-----	4 (120°)	4 (120°)	5 (135°)	6 (150°)	1 (60°)
48	-----	-----	4 (120°)	4 (120°)	5 (135°)	6 (150°)	-----
52	-----	-----	4 (120°)	4 (120°)	5 (135°)	6 (150°)	-----

NOTES:

1. Discrimination of 60 Hz & 400 Hz assemblies is accomplished by alternate positioning of inserts. See applicable insert drawing for keying.
2. For Navy ground support equipment use only. Arrangement 44-51, 44-52 and 44-56 are not applicable.
3. Shell main key positions 2 and 3 not used.
4. Dimensions are in inches. Metric equivalents are given for information only.
5. For protective cover, see MS90564.

FIGURE 1. Receptacle - Continued.

MS90558F

REQUIREMENTS:

Mates with plugs shown on standard MS90557.

The PIN shall include the size, finish, shell key alternate position.

Inserts and contacts are removable.

For final installation contacts will be assembled in all insert holes.

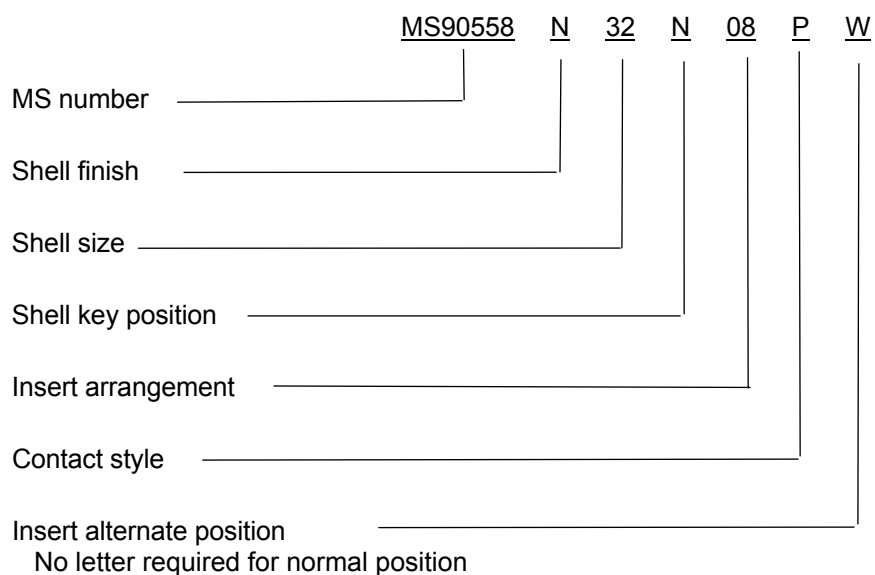
Shell and nut finish shall be designated by the letter C (conductive) or N (non-conductive).

Normal key position. For alternate key positions see figure 1.

For insert arrangement, see MS90565, MS90567, MS14054, MS14055, and MS14057.

Covers specified in MS90564 shall be supplied with connector.

Part or Identifying Number (PIN) example:



Changes from previous issue. Marginal notations are not used in this revision to identify changes with respect to the previous issue due to the extent of the changes.

Reference documents. In addition to MIL-DTL-22992, this document references the following:

MS14054
 MS14055
 MS14057
 MS90557
 MS90564
 MS90565
 MS90567

MS90558F

CONCLUDING MATERIAL

Custodians:

Army – CR
Navy – EC
Air Force – 85
DLA – CC

Preparing activity:

DLA – CC

Review activities:

Army – AR, MI
Navy – AS, CG, MC, OS
Air Force – 19, 99

(Project 5935–2008-087)

NOTE: The activities listed above were interested in this document as of the date of this document. Since organizations and responsibilities can change, you should verify the currency of the information above using the ASSIST Online database at <http://assist.daps.dla.mil>.