

This military standard is approved for use by all Departments and Agencies of the Department of Defense. Selection for all new engineering and design applications and for repetitive use shall be made from this document.

Reviewer activities: Army - EL, MI, MU

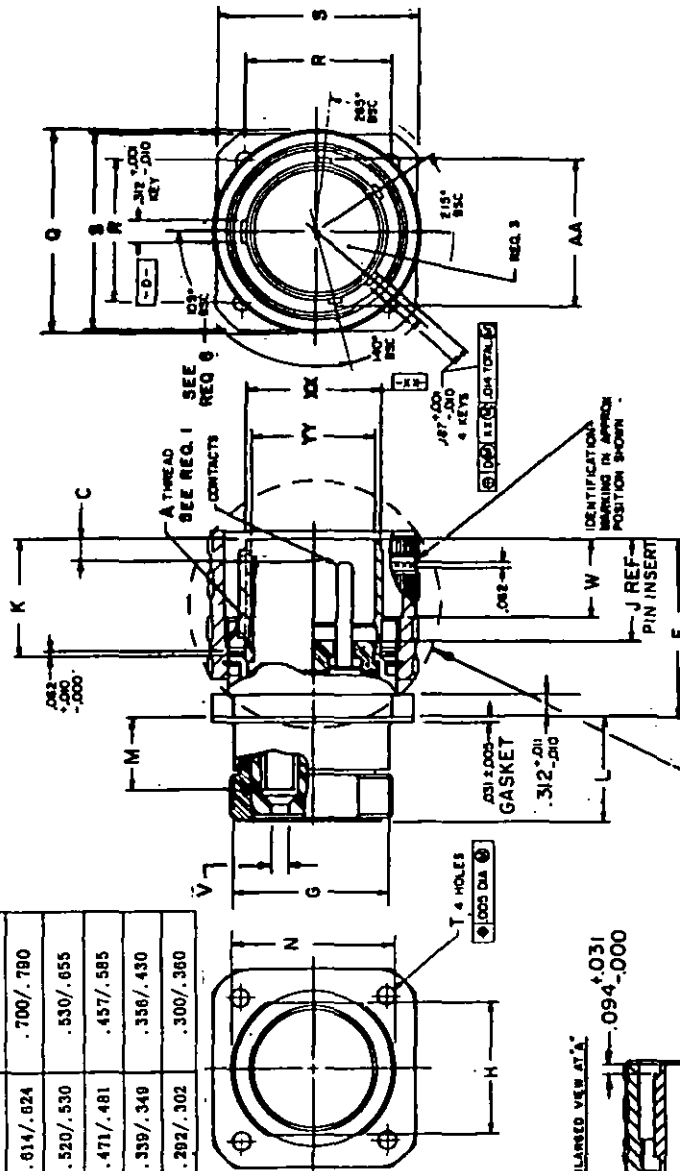
User activities: Army - MO

Navy - MC, CG, OS

Air Force - 11, 17, 80, 85

OSA - ES

CONTACT SIZE	Z DIA	V DIA WIRE SEALING RANGE
4/0	.614/.624	.700/.780
2/0	.520/.530	.530/.655
1/0-1	.471/.481	.457/.585
4	.339/.349	.356/.430
6	.292/.302	.300/.360



(D) FOR CHANGES SEE PAGE 3

P.A. Navy - EC Other Cust Army - EL AF - 11	International Interest	TITLE CONNECTOR, RECEPTACLE, ELECTRICAL, WALL MOUNTING, (WITH COUPLING RING) CLASS L (EQUIPMENT RECEPTACLE)	MILITARY STANDARD
Procurement Specification MIL-C-22992	SUPERSEDES:		MS 90558
			PAGE 1 OF 3

DD FORM 1 SEP 63 672

(Coordinated) PREVIOUS EDITIONS OF THIS FORM ARE OBSOLETE.

5935-2059-6

FED. SUP CLASS 5935

SIZE	PHASE	NEUTRAL	GROUND	F	J	K	W
28	.196	.078	.078	2.639	1.370	1.557	1.082
32			.078	2.639	1.370	1.557	1.082
44			.547	2.998	1.589	1.776	1.281
48			.547	2.998	1.589	1.776	1.281
52			.547	2.998	1.589	1.776	1.281

APPROVED 1-JUNE-1966 REVISED (A) 2 FEBRUARY 1972 (B) 29 JANUARY - 1973 (C) 28 AUG 1974 (D) 24 FEB 1976

This military standard is approved for use by all Departments and Agencies of the Department of Defense. Selection for all new engineering and design applications and for repetitive use shall be made from this document.

Reviewers activities: Army - EL, ML, MU  
Navy - EC, AS  
Air Force - II, 17, 80, 85  
OSA - ES

User activities: Army - MO  
Navy - MC, CG, OS  
Air Force - 14, 19

SIZE	A THREAD CLASS 2B	G DIA. + .006 - .010	H + .001 - .010	L + .031 - .010	M + .047 - .020	N + .011 - .020	Q DIA. MAX.	R (BSC)	S + .021 - .020	T + .005 - .005	AA DIA. + .006 - .005	XX DIA. + .001 - .010	YY DIA. + .010 - .001
28	2.000-.1428P-.2857L	1.938	1.812	.959	.328	2.000	2.312	1.844	2.375	.177	1.672	1.522	1.370
32	2.250-.1428P-.2857L	2.188	2.062	.959	.328	2.250	2.562	2.062	2.625	.209	1.922	1.772	1.620
44	3.000-.1428P-.2857L	3.062	2.812	1.021	.390	3.125	3.531	2.812	3.375	.281	2.672	2.522	2.296
48	3.250-.1428P-.2857L	3.312	3.062	1.021	.390	3.375	3.781	3.000	3.625	.281	2.891	2.725	2.551
52	3.500-.1428P-.2857L	3.562	3.312	1.021	.390	3.625	4.016	3.156	3.875	.281	3.141	2.975	2.801

NOTES:

- For design feature purposes, this standard takes precedence over procurement documents referenced herein.
- Referenced documents shall be of the issue in effect on date of invitations for bid.
- Dimensions are in inches. Unless otherwise specified tolerance is  $\pm .016$ .
- For protective cover see standard MS90564.

MS number  
Shell finish  
(see req 5)

MS90558 N 32 N  
Shell size  
Shell key position  
(see req 6)

W  
Style P  
Insert alternate position  
(no letter required for normal position)

Insert arrangement number

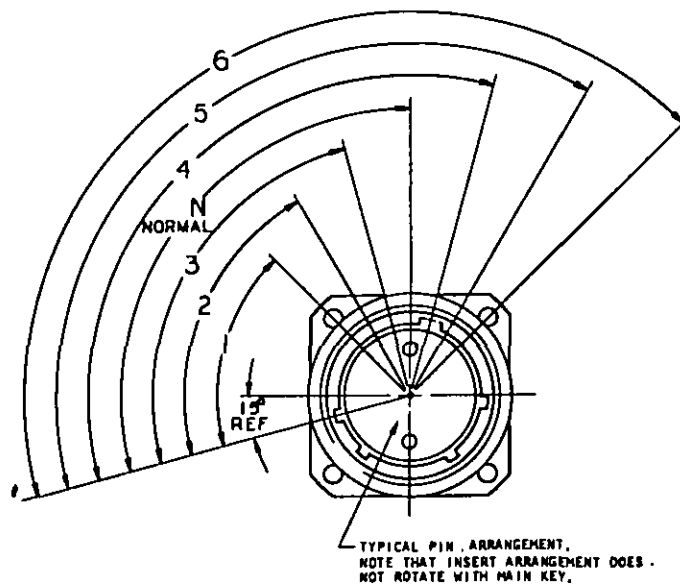
REQUIREMENTS:

- Mates with plugs shown on standard MS90557.
- The part number shall include the size, finish, shell key alternate position, insert arrangement number, style (P) and insert alternate position as shown in the example below.
- Inserts and contacts are removable.
- For final installation contacts will be assembled in all insert holes.
- Shell and nut finish shall be designated by the letter C (conductive) or N (non-conductive).
- Normal key position. For alternate key positions see page 3.
- For insert arrangements see standards MS90565 thru MS90567, MS14054, MS14055 and MS14057.
- Covers per MS90564 shall be supplied with connector.

FED. SUP CLASS  
5935

APPROVED 1 June 1965 REVISED ① FOR CHANGES SEE PAGE 3

P. NAVY - EC Other Cust Army - EL AF - 11	International Interest	TITLE CONNECTOR, RECEPTACLE, ELECTRICAL, WALL MOUNTING, (WITH COUPLING RING) CLASS L, (EQUIPMENT RECEPTACLE)	MILITARY STANDARD MS90558
Procurement Specification MIL-C-22992	SUPERSEDES:	PAGE 2 OF 3	

FED. SUP CLASS  
5935

## NONGROUNDING ASSEMBLIES: FINISH N

SHELL SIZE	SHELL MAIN KEY POSITIONS	
	DC	
	2 WIRE	
	28 V	
28	N (105°)	
32		
44		
48		
52		

## GROUNDING ASSEMBLIES: FINISH C

SHELL SIZE	SHELL MAIN KEY POSITIONS					
	60 Hz & 400 Hz (SEE NOTE 1)					
	1 Ø			3 Ø		
	2 WIRE		3 WIRE	4 WIRE		3 Ø (SEE NOTE 2)
	120 V	240 V	120/240 V	120/208 V	240/416 V	277/480 V
28	4 (120°)	5 (135°)	4 (120°)	4 (120°)	5 (135°)	6 (150°)
32						
44						
48						
52						
						1 (60°)

## NOTES:

1. Discrimination of 60 Hz & 400 Hz assemblies is accomplished by alternate positioning of inserts. See applicable insert drawing for keying.
2. For Navy ground support equipment use only. Arrangements 44-51, 44-52 and 44-56 are not applicable.
3. Shell main key positions 2 and 3 not used.

P.A. NAVY - EC

International Interest

TITLE CONNECTOR, RECEPTACLE,  
ELECTRICAL, WALL MOUNTING,  
(WITH COUPLING RING) CLASS L,  
(EQUIPMENT RECEPTACLE)

MILITARY STANDARD

Other Cust  
ARMY - EL  
AF - II

MS 90558

Procurement Specification

SUPERSEDES:

PAGE 3 OF 3

DD FORM 1 SEP 63 672

(Coordinated) PREVIOUS EDITIONS OF THIS FORM ARE OBSOLETE.

This military standard is approved for use by all Departments and Agencies of the Department of Defense. Selection for all new engineering and design applications and for repetitive use shall be made from this document.

Reviewer activities: Army - EL, M1, MU  
Navy - EC, AS  
Air Force - II, 17, 80, 85  
DSA - ES

User activities: Army - MO  
Navy - MC, CG, OS  
Air Force - 14, 19

APPROVED 11 June 1966 REVISED ① FOR CHANGES SEE PAGE 3