

INCH-POUND

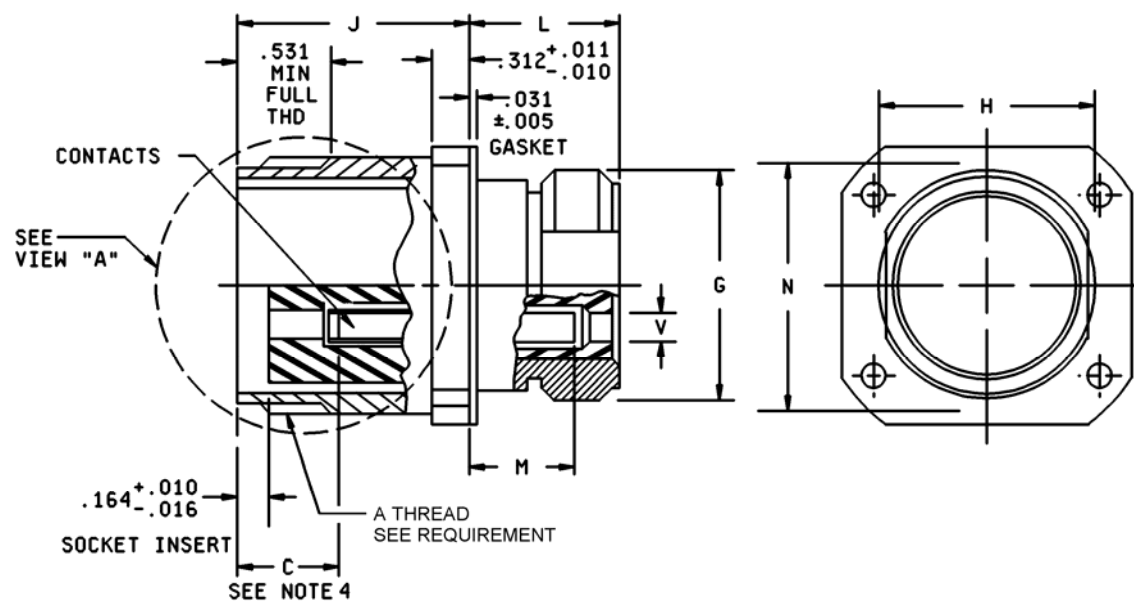
MS90555F  
 13 March 2009  
 SUPERSEDING  
 MS90555E  
 3 January 2003

## DETAIL SPECIFICATION SHEET

CONNECTOR, RECEPTACLE, ELECTRICAL, WALL MOUNTING,  
 CLASS L (POWER SOURCE RECEPTACLE)

This specification is approved for use by all Departments  
 and Agencies of the Department of Defense.

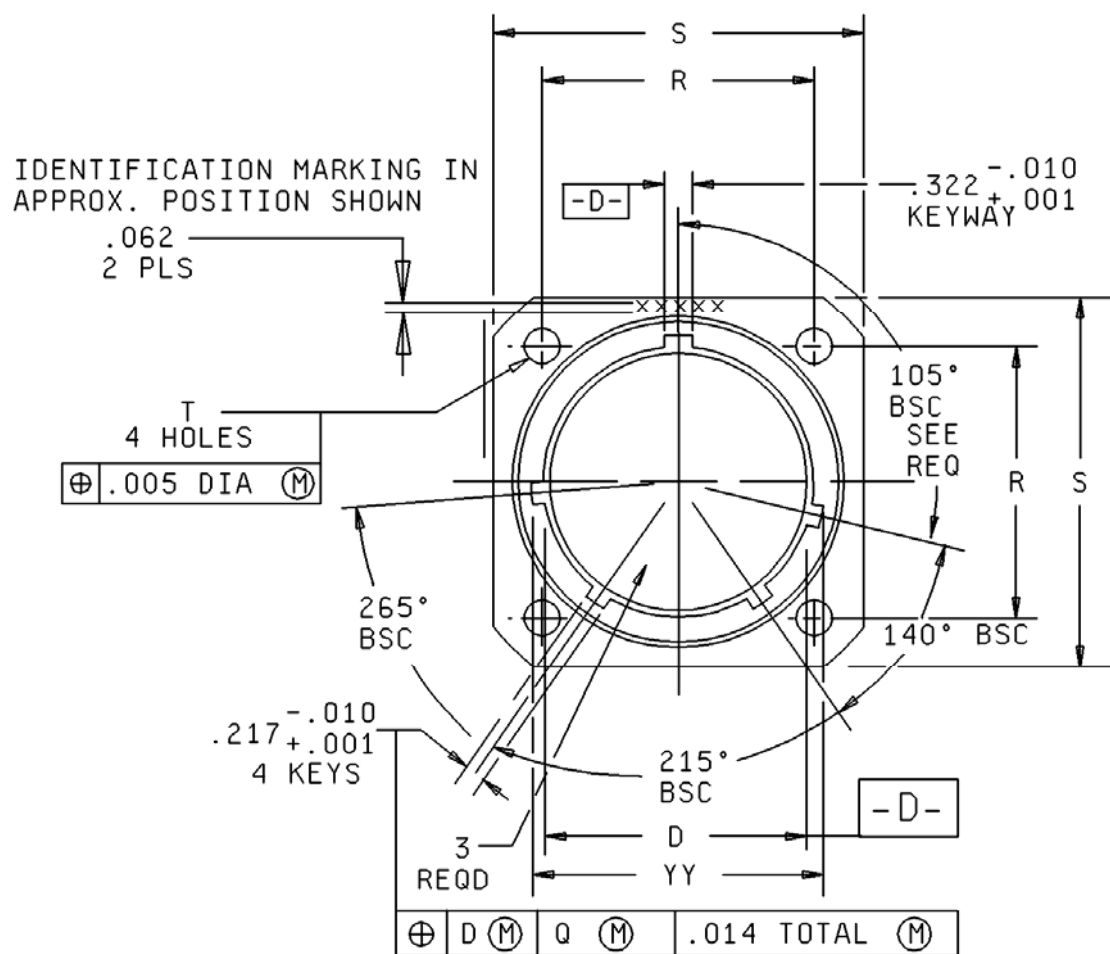
The requirements for acquiring the product described herein  
 shall consist of this specification sheet and MIL-DTL-22992.



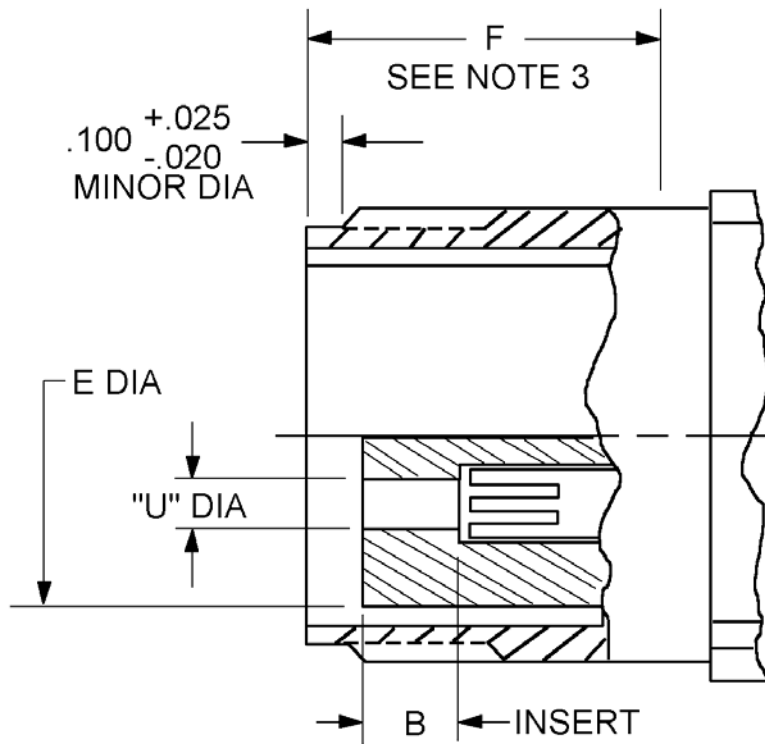
Inches	mm
.005	.13
.010	.25
.011	.28
.016	.41
.031	.79
.164	4.17
.312	7.92
.531	13.49

FIGURE 1. Receptacle.

MS90555F

FIGURE 1. Receptacle – Continued.

MS90555F

ENLARGED VIEW "A"

Contact size	U dia	V dia Wire sealing range
4 / 0	.510 (12.95) / .515 (13.08)	.700 (17.78) / .790 (20.07)
2 / 0	.416 (10.57) / .421 (10.69)	.530 (13.46) / .655 (16.64)
1 / 0 – 1	.367 (9.32) / .372 (9.45)	.457 (11.61) / .585 (14.86)
4	.235 (5.97) / .240 (6.10)	.356 (9.04) / .430 (10.92)
6	.188 (4.78) / .193 (4.90)	.300 (7.62) / .360 (9.14)

Inches	mm
.020	.508
.025	.635
.100	2.54

FIGURE 1. Receptacle – Continued.

## MS90555F

Shell size	A thread class 2A	B + .020 - .010		C max		D dia + .005 - .010	E dia max	F ± .005
		Phase & neutral	Ground	Phase & neutral	Ground			
28	2.000-1428P-2857L	.523 (13.28)	.523 (13.28)	.913 (23.19)	.913 (23.19)	1.538 (39.07)	1.281 (32.54)	1.514 (38.46)
32	2.250-1428P-2857L	.523 (13.28)	.523 (13.28)	.913 (23.19)	.913 (23.19)	1.788 (45.42)	1.562 (39.67)	1.514 (38.46)
44	3.000-1428P-2857L	.742 (18.85)	.273 (6.93)	1.138 (28.91)	.663 (16.84)	2.545 (64.64)	2.239 (56.87)	1.733 (44.02)
48	3.250-1428P-2857L	.742 (18.85)	.273 (6.93)	1.156 (29.36)	.663 (16.84)	2.755 (69.98)	2.494 (63.35)	1.733 (44.02)
52	3.500-1428P-2857L	.742 (18.85)	.273 (6.93)	1.156 (29.36)	.663 (16.84)	3.005 (76.33)	2.744 (69.70)	1.733 (44.02)

Shell size	G dia + .006 - .010	H + .001 - .010	J + .016 - .000	L ± .031	M ± .047	N dia + .011 - .020	R (BSC)	S + .021 - .020	T ± .005	YY dia + .010 - .006
28	1.938 (49.23)	1.812 (46.02)	2.188 (55.58)	1.376 (34.95)	.750 (19.05)	2.000 (50.80)	1.844 (46.84)	2.375 (60.33)	.177 (4.50)	1.692 (42.98)
32	2.188 (55.58)	2.062 (52.37)	2.188 (55.58)	1.376 (34.95)	.750 (19.05)	2.250 (57.15)	2.062 (52.37)	2.625 (66.68)	.209 (5.31)	1.942 (49.33)
44	3.062 (77.77)	2.812 (71.42)	2.532 (64.31)	1.438 (36.53)	.812 (20.62)	3.125 (79.38)	2.812 (71.42)	3.375 (85.73)	.281 (7.14)	2.692 (68.38)
48	3.312 (84.12)	3.062 (77.77)	2.532 (64.31)	1.438 (36.53)	.812 (20.62)	3.375 (85.73)	3.000 (76.20)	3.625 (92.08)	.281 (7.14)	2.911 (73.94)
52	3.582 (90.98)	3.312 (84.12)	2.532 (64.31)	1.438 (36.53)	.812 (20.62)	3.625 (92.08)	3.156 (80.16)	3.875 (98.43)	.281 (7.14)	3.161 (80.29)

## NOTES:

1. Dimensions are in inches. Unless otherwise specified, tolerance is  $\pm .016$  (0.41 mm).
2. For protective cover, see MS90563.
3. F dimension from the front of the shell to the shoulder.
4. This is a depth at which a square ended gauge pin of the same basic diameter as the mating pin, first engages the spring of the socket contact.
5. Metric equivalent is given for information only.

FIGURE 1. Receptacle – Continued.

## MS90555F

## REQUIREMENTS:

Dimensions and configurations: See figure 1.

Mating: This receptacle mates with MS90556 plugs.

Inserts and contacts: Removable.

For final installation: Contacts will be assembled in all insert holes.

Shell and nut finish: C (conductive) or N (nonconductive).

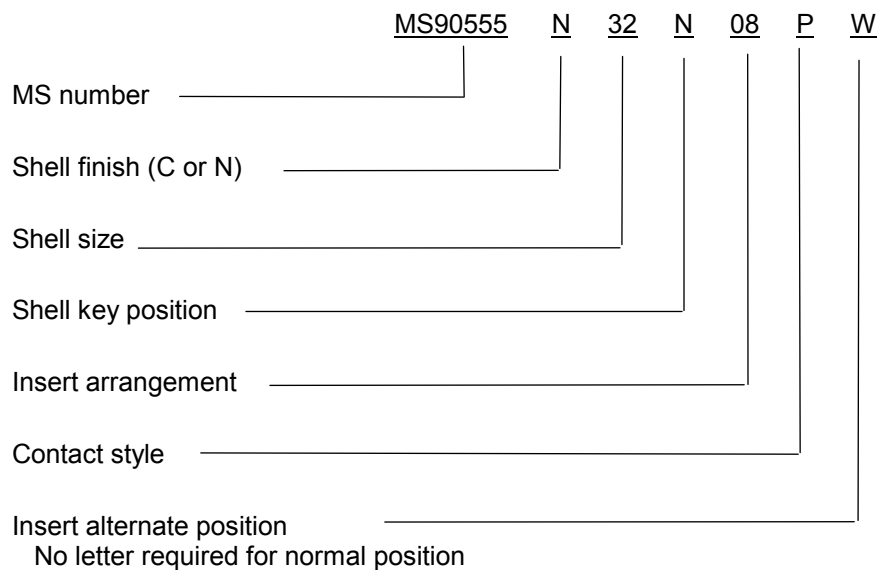
Normal keyway position: See figure 1.

Alternate keyway position: See figure 2.

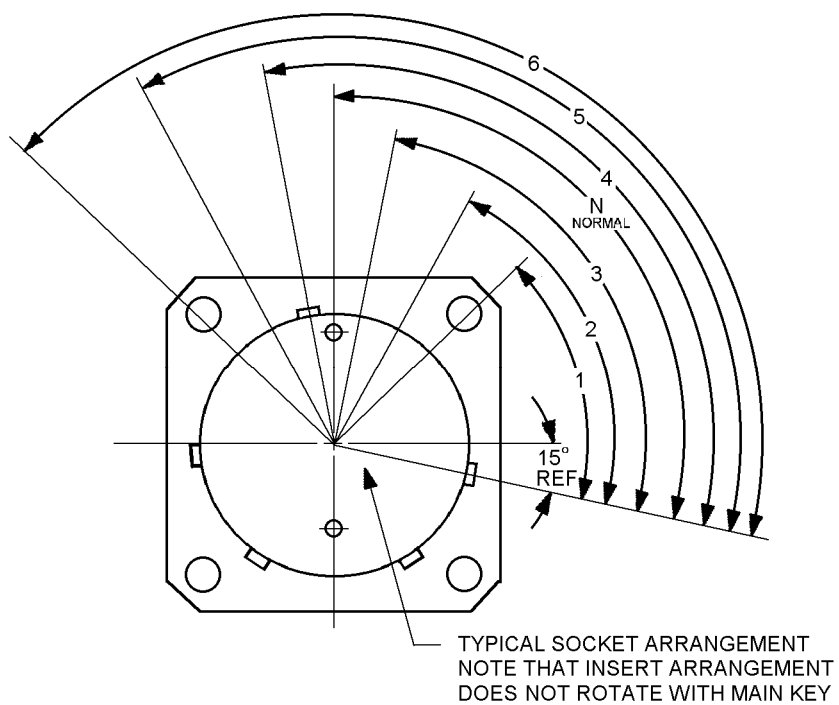
Insert arrangements: See MS90565, MS90567, MS14054, MS14055, and MS14057.

Cover: In accordance with MS90563, shall be supplied with the connector.

Part or Identifying Number (PIN) example:



MS90555F



Finish N (nongrounding assemblies).

Shell size	Shell main key positions 2 wire, 28 V dc
28	N (105°)
32	N (105°)
44	N (105°)
48	N (105°)
52	N (105°)

FIGURE 2. Alternate key position.

## MS90555F

Finish C (grounding assemblies)

Shell size	Shell main key position						
	1Ø			3Ø			3Ø (see note 2)
	2 wire		3 wire	4 wire			3 wire
	120 V	240 V	120/240 V	120/208 V	240/416 V	277/480 V	450/480 V
28	4 (120°)	5 (135°)	4 (120°)	4 (120°)	5 (135°)	6 (150°)	---
32	4 (120°)	5 (135°)	4 (120°)	4 (120°)	5 (135°)	6 (150°)	---
44	4 (120°)	---	4 (120°)	4 (120°)	5 (135°)	6 (150°)	1 (60°)
48	---	---	4 (120°)	4 (120°)	5 (135°)	6 (150°)	---
52	---	---	4 (120°)	4 (120°)	5 (135°)	6 (150°)	---

## NOTES:

1. Discrimination of 60 Hz and 400 Hz assemblies is accomplished by alternate positioning of inserts. See applicable insert drawing for keying.
2. For Navy ground support equipment use only. Arrangements 44-51, 44-52 & 44-56 are not applicable.
3. Shell main key positions 2 and 3 are not used.

FIGURE 2. Alternate key position - Continued.

Changes from previous issue. Marginal notations are not used in this revision to identify changes with respect to the previous issue due to the extent of the changes.

Referenced documents. In addition to MIL-DTL-22992, this document references the following:

MS14054  
MS14055  
MS14057  
MS90563  
MS90556  
MS90565  
MS90567

MS90555F

CONCLUDING MATERIAL

Custodians:

Army - CR  
Navy - EC  
Air Force - 85  
DLA - CC

Preparing activity:

DLA - CC

Review activities:

Army – MI  
Navy – AS, CG, MC, OS  
Air Force – 19

(Project 5935-2008-086)

NOTE: The activities listed above were interested in this document as of the date of this document. Since organizations and responsibilities can change, you should verify the currency of the information above using the ASSIST Online database at <http://assist.daps.dla.mil>.