

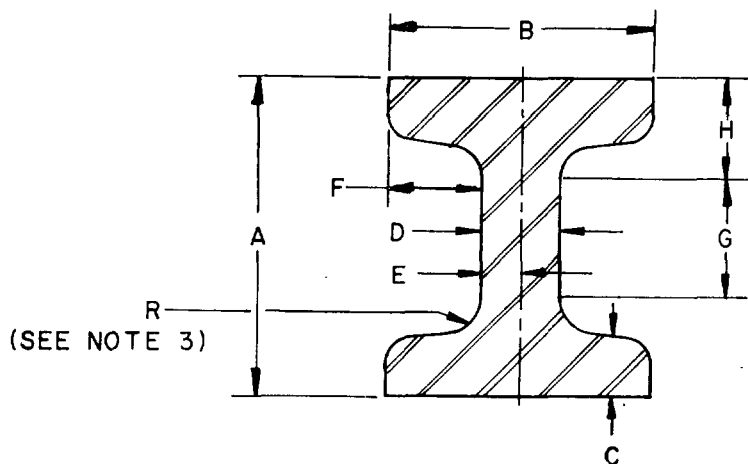
FED. SUP CLASS
9520

TABLE I. DASH NUMBERS

DASH NO	INDUSTRY DESIGNATOR	DEPTH OF SECTION A	FLANGE WIDTH B	AVG THKNS OF FLANGE C	1/ WEB THKNS D APPROX	1/ HALF WEB THKNS E APPROX	1/ WEB TO END OF FLANGE F APPROX	VERT 1/ DISTANCE BETWEEN RADII G APPROX	VERT 1/ DISTANCE RADIUS TO FLANGE H APPROX
001	S3 x 5.7	3.00	2.330	.260	.188	.063	1.125	1.750	.625
003	S3 x 7.5	3.00	2.509	.260	.375	.188	1.125	1.750	.625
005	S4 x 7.7	4.00	2.663	.293	.188	.125	1.250	2.625	.688
007	S5 x 10	5.00	3.004	.326	.188	.125	1.375	3.500	.750
009	S6 x 12.5	6.00	3.332	.359	.250	.125	1.250	4.375	.813
011	S6 x 17.25	6.00	3.565	.359	.438	.250	1.250	4.375	.813
013	S7 x 15.3	7.00	3.662	.392	.250	.125	1.750	5.250	.875
015	S8 x 18.4	8.00	4.001	.425	.250	.125	1.875	6.000	1.000
017	S8 x 23	8.00	4.171	.425	.438	.250	1.875	6.000	1.000
019	S10 x 25.4	10.00	4.661	.491	.313	.125	2.125	7.750	1.125
021	S10 x 35	10.00	4.944	.491	.625	.313	2.125	7.750	1.125
023	S12 x 31.8	12.00	5.000	.544	.375	.313	2.375	9.625	1.188
025	S12 x 40.8	12.00	5.252	.659	.438	.250	2.375	9.125	1.438
027	S12 x 50	12.00	5.477	.659	.688	.313	2.375	9.125	1.438
029	S15 x 50	15.00	5.640	.622	.563	.250	2.500	12.250	1.375
031	S24 x 80	24.00	7.000	.870	.500	.250	3.250	20.500	1.750

1/SEE NOTE 4

APPROVED 29 JAN 85
REVISED

P.A. Other Cust	YD MR 99	INTERNATIONAL INTEREST	TITLE "S" SHAPES ("I" BEAM), STRUCTURAL STEEL, CARBON, MEDIUM	MILITARY STANDARD MS90509
PROCUREMENT SPECIFICATION ASTM A36		SUPERSEDES:		PAGE 1 OF 2

USER ACTIVITIES:
ARMY-AT, MI
NAVY-ASREVIEWER ACTIVITIES:
ARMY-AT, MI
AIR FORCE-84
DLA-IS

This military standard is approved for use by all Departments and Agencies of the Department of Defense. Selection for all new engineering and design applications and for repetitive use shall be made from this document when applicable.

USER ACTIVITIES:
NAVY-AS

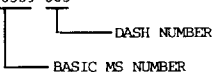
REVIEWER ACTIVITIES:
ARMY-AT, MI
AIR FORCE -84
DLA -IS

This military standard is approved for use by all Departments and Agencies of the Department of Defense. Selection for all new engineering and design applications and for repetitive use shall be made from this document when applicable.

FED SUP CLASS
9520

REQUIREMENTS:

1. MATERIAL. STEEL, CARBON, MEDIUM, AS SPECIFIED IN PROCUREMENT DOCUMENT.
2. FORMING PROCESS. "S" SHAPES ("I" BEAM), STRUCTURAL, STEEL, CARBON, MEDIUM, SHALL BE HOT ROLLED.
3. FINISH. AS SPECIFIED IN PROCUREMENT DOCUMENT.
4. HEAT TREATMENT. AS FABRICATED.
5. PART NUMBER. THE PART NUMBER CONSISTS OF THE BASIC MS NUMBER PLUS A DASH NUMBER FROM TABLE I.

EXAMPLE: MS90509-003


MS90509-003 INDICATES - "S" SHAPES ("I" BEAM), STRUCTURAL, STEEL, CARBON, MEDIUM;
INDUSTRY DESIGNATOR S3 x 7.5

6. MARKING. IRON AND STEEL PRODUCTS SHALL BE MARKED IN ACCORDANCE WITH FED-STD-183 WITH THE EXCEPTION THAT A PART NUMBER FROM THIS MILITARY STANDARD SHALL BE INCLUDED AS PART OF THE IDENTIFICATION MARKING.

NOTES:

1. ALL DIMENSIONS ARE IN INCHES
2. STANDARD LENGTH OF "S" SHAPES IS 10 FEET MINIMUM, 12 FEET MAXIMUM.
3. RADII OF FILLETS AND TOES OF SHAPE PROFILES VARY WITH INDIVIDUAL MANUFACTURERS AND THEREFORE ARE NOT SPECIFIED.
4. COLUMNS "D" THROUGH "H" FOR INFORMATIONAL PURPOSES ONLY.
5. REFERENCED DOCUMENTS SHALL BE OF THE ISSUE IN EFFECT ON DATE OF INVITATIONS FOR BIDS, OR REQUEST FOR PROPOSAL EXCEPT THE REFERENCED ADOPTED INDUSTRY DOCUMENTS SHALL GIVE THE DATE OF THE ISSUE ADOPTED.
6. FOR DESIGN FEATURE PURPOSES THIS STANDARD TAKES PRECEDENCE OVER PROCUREMENT DOCUMENTS REFERENCED HEREIN.

APPROVED 29 JAN 85
REVISED

P.A. Other Cust	YD MR 99	INTERNATIONAL INTEREST	TITLE "S" SHAPES ("I" BEAM), STRUCTURAL STEEL, CARBON, MEDIUM	MILITARY STANDARD MS 90509
PROCUREMENT SPECIFICATION ASTM A36			SUPERSEDES:	PAGE 2 OF 2

DD FORM 1 MAY 73 672-1 (COORDINATED)

PREVIOUS EDITIONS OF THIS FORM ARE OBSOLETE

9520-0076