

INCH-POUND

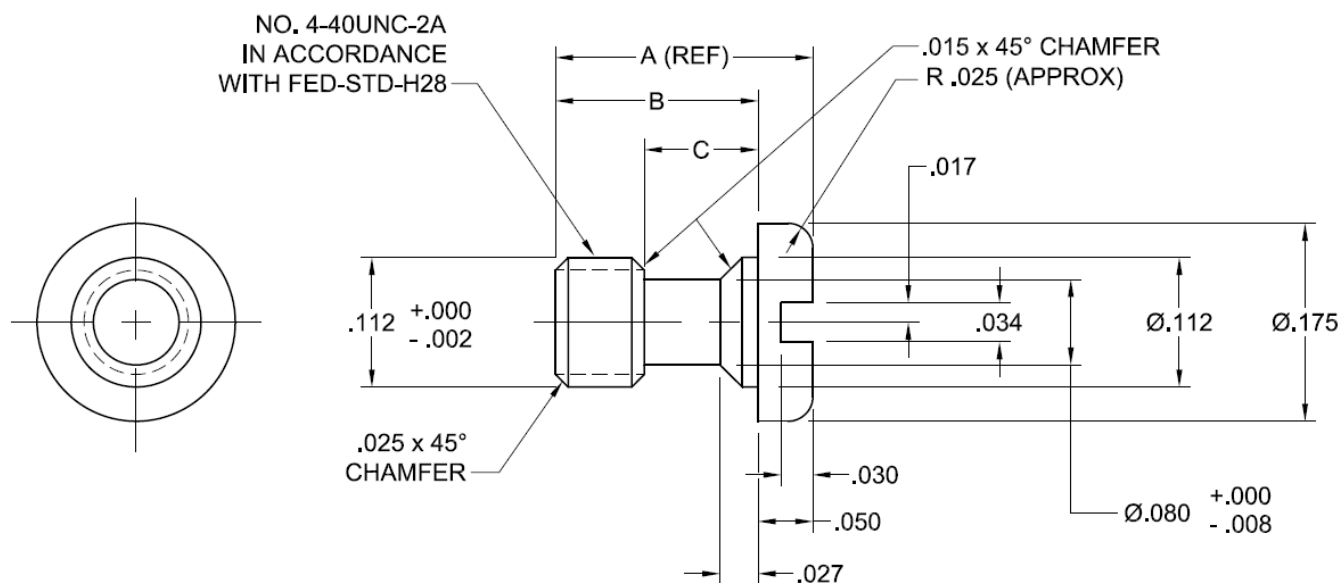
MS90402A
 20 April 2011
 SUPERSEDING
 MS90402
 6 JUNE 1967

DETAIL SPECIFICATION SHEET

SCREW, CAPTIVE

This specification sheet is approved for use by all Departments and Agencies of the Department of Defense.

The requirements for acquiring the product described herein shall consist of this specification sheet.

FIGURE 1. Screw, Captive.TABLE I. Part Numbers and Dimensions.

PART NO.	A (REF)	B $\begin{smallmatrix} +.005 \\ -.000 \end{smallmatrix}$	C
MS90402-1	.222	.172	.093
MS90402-2	.200	.150	.071

MS90402A

Notes:

1. Material: Steel, corrosion resisting, SAE AMS-QQ-S-763, Class 410, Condition A (annealed) or Class 416, Condition A (annealed).
2. Finish: Passivate in accordance with SAE AMS2700, Type II or Type III.
3. Remove all burrs and break all sharp edges.
4. Dimensions in inches. Unless otherwise specified, tolerances: decimals $\pm .005$, angles $\pm 1^\circ$. Interpret dimensions and tolerances in accordance with ASME Y14.5M.
5. Changes from previous issue: Marginal notations are not used in this revision to identify changes with respect to the previous issue due to the extent of the changes.

Custodians:

Army - AR
Navy - AS
Air Force - 11

Preparing activity:

DLA - IS

(Project 5305-2011-008)

Review activities:

Army AV, MI
Navy - CG, MC
DLA - CC

NOTE: The activities listed above were interested in this document as of the date of this document. Since organizations and responsibilities can change, you should verify the currency of the information above using the ASSIST Online database at <https://assist.daps.dla.mil>.