

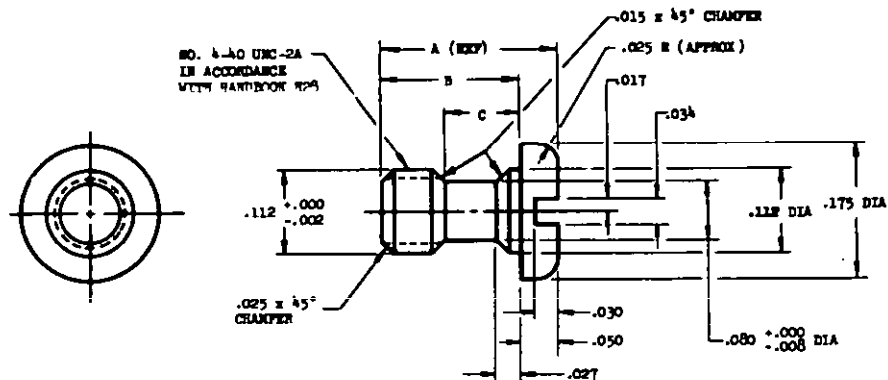
FED. SUP CLASS
5994

NOTICE - REVIEW/USER INFORMATION IS CURRENT AS OF DATE OF THIS DOCUMENT. FOR FUTURE COORDINATION OF CHANGES TO THIS DOCUMENT, DRAFT CITATION SHOULD BE BASED ON THE INFORMATION IN THE CURRENT DODDIES.

DEPT. INTEREST:
ARMY - AV
NAVY - AS, CG, MC
AF - 17

REVIEWER INTEREST:
ARMY - MI, EL, MI
NAVY - AS, SH
AF - 11, 65

This military standard is approved by the Department of Defense and is mandatory for use by all Departments & Agencies of the Department of Defense. Selection for all new engineering and design applications and for repetitive use shall be made from this document.



DASH NO.	A (KEEP)	B $\pm .005$ $-.000$	C
-1	.222	.172	.093
-2	.200	.150	.071

NOTES:

1. MATERIAL: STEEL, CORROSION RESISTING, QQ-B-763, CLASS 410, COND A (ANNEALED) OR CLASS 416, COND A (ANNEALED).
2. FINISH: PASSIVATE IN ACCORDANCE WITH QQ-P-35, TYPE II OR TYPE III.
3. REMOVE ALL BURRS AND BREAK ALL SHARP EDGES.
4. DIMENSIONS IN INCHES. UNLESS OTHERWISE SPECIFIED, TOLERANCES: DECIMALS $\pm .005$, ANGLES, $\pm 1^\circ$. INTERPRET DIMENSIONING AND TOLERANCING IN ACCORDANCE WITH MIL-STD-8.

FOR DESIGN FEATURE PURPOSES, THIS STANDARD TAKES PRECEDENCE OVER PROCUREMENT DOCUMENTS REFERENCED HEREIN. REFERENCED DOCUMENTS SHALL BE OF THE ISSUE IN EFFECT ON DATE OF INVITATIONS FOR BID.

P.A. NAVY-AS Other Cust ARMY - MU NAVY - AS AF - 11	TITLE SCREW, CAPTIVE	MILITARY STANDARD MS90402
PROCUREMENT SPECIFICATION NOTE	SUPERSEDES: BUORD 6A6021 AND 6A6022	SHEET 1 OF 1

DD FORM 672-1 (Coordinated)

PREVIOUS EDITIONS OF THIS FORM ARE OBSOLETE W70.

PLATE NO. 15320

APPROVED 6 JUNE 1967 REVISED