

FED. SUP CLASS
5990

NOTICE - REVISED USER INFORMATION IS CURRENT AS OF DATE OF THIS DOCUMENT. FOR FUTURE COORDINATION OF CHANGES TO THIS DOCUMENT, DRAFT CIRCULATION SHOULD BE BASED ON THE INFORMATION IN THE CURRENT DODISS.

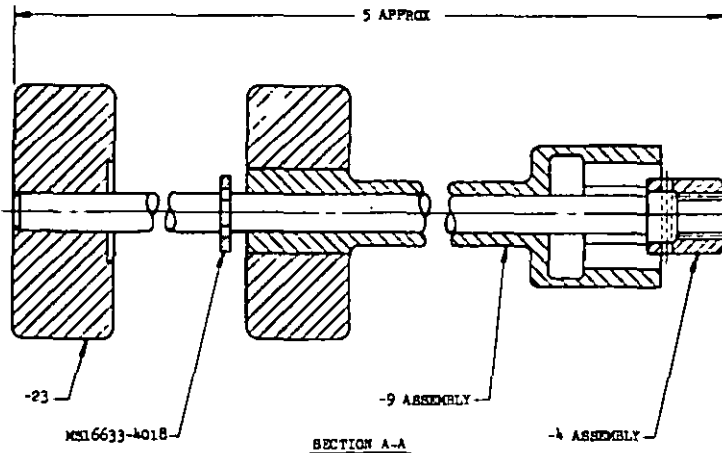
USER INTEREST:

ARMY - AV
NAVY - AS, CG, MC
AF - 17

REVIEWER INTEREST:

ARMY - MU, EL, MI
NAVY - AS, SH
AF - 11, B5

This military standard is approved by the Department of Defense and is mandatory for use by all Departments & Agencies of this Department of Defense. Selection for all new engineering and design applications and for repetitive use shall be made from this document.

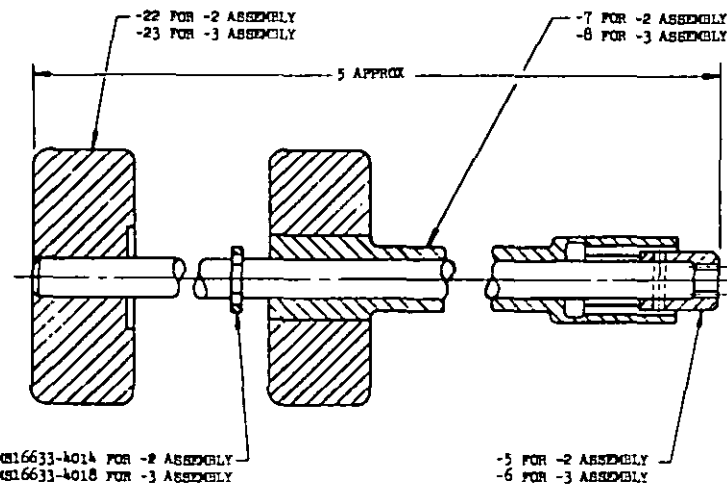


SECTION A-A

TABLE I

ASSEMBLY DASH NO.	NOMINAL HEX SOCKET	MATING SPLINE DATA			
		SHAFT O.D.	NO. TEETH	D. P.	P. A.
-1	7/16	.250	22	96	20°

-1 ASSEMBLY
(SEE TABLE I)



SECTION B-B

TABLE II

ASSEMBLY DASH NO.	NOMINAL HEX SOCKET	MATING SPLINE DATA			
		SHAFT O.D.	NO. TEETH	D.P.	P.A.
-2	1/8	.125	13	120	20°
-3	5/16	.187	21	120	20°

-2 AND -3 ASSEMBLY
(SEE TABLE II)

P.A. NAVY-AS

Other Cust
ARMY - M
NAVY - AS
AF - 11

TITLE

WRENCH, SOCKET

MILITARY STANDARD

MS90395

PRELIMINARY SPECIFICATION
NONE

SUPERSEDES:

BUORD 67703T, 67703B, 613862

SHEET 1 OF 6

DD FORM 672-1 (Coordinated)

PREVIOUS EDITIONS OF THIS SPEC ARE OBSOLETE

W67

PLATE NO. 15326

APPROVED 6 JUNE 1967 REVISED

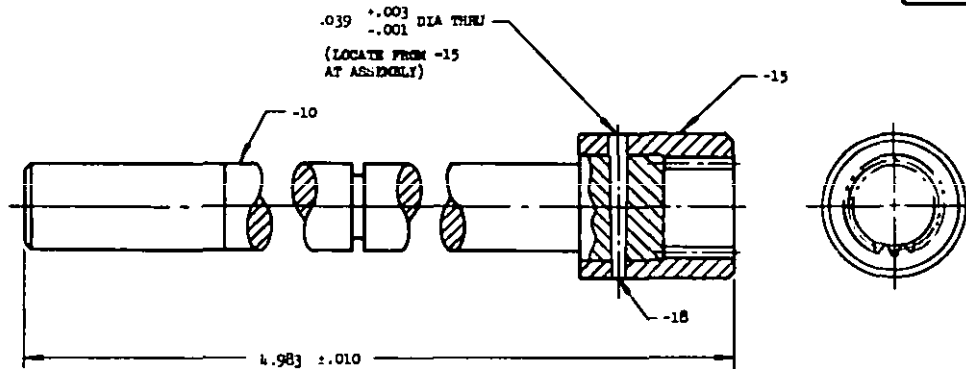
NOTICE - REVIEW/USER INFORMATION IS CURRENT AS OF DATE OF THIS DOCUMENT. FOR FUTURE COORDINATION OF CHANGES TO THIS DOCUMENT, DRAWING CIRCULATION SHOULD BE BASED ON THE INFORMATION IN THE CURRENT EDITIONS.

USER INTEREST:
ARMY - AV
NAVY - AS, CC, MC
AF - 17

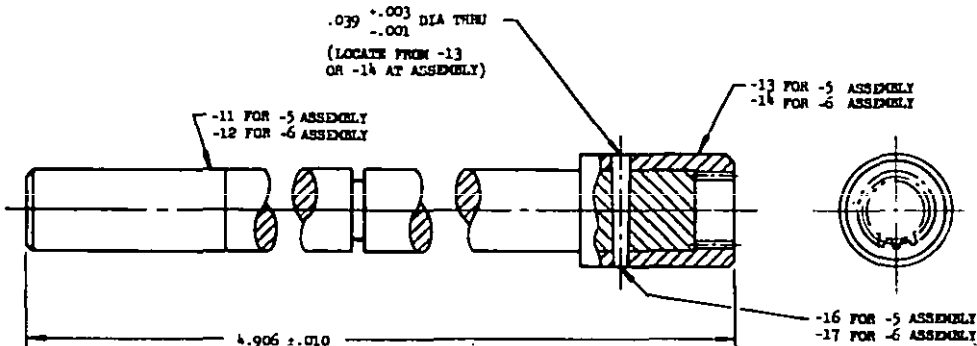
REVIEWER INTEREST:
ARMY - MI, EL, MI
NAVY - AS, SH
AF - 11, 85

This military standard is approved by the Department of Defense and is mandatory for use by all Departments & Agencies of the Department of Defense. Selection for all new engineering and design applications and for repetitive use shall be made from this document.

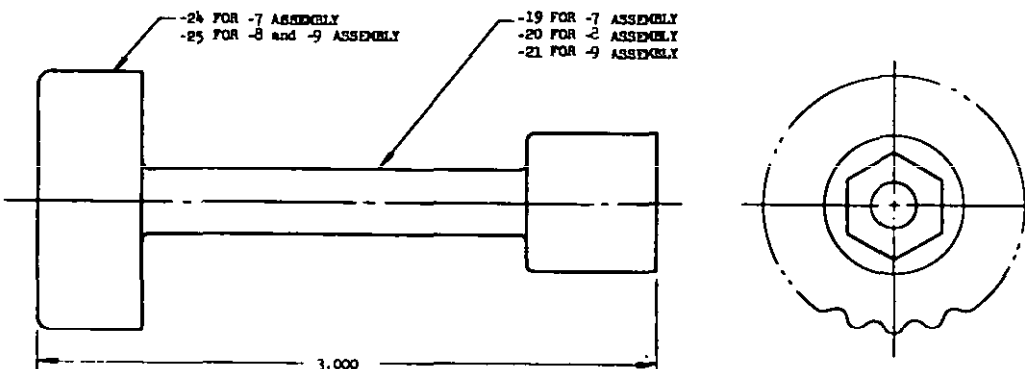
FED. SUP CLASS
5990



A SHAFT AND SOCKET ASSEMBLY



-5 SHAFT AND SOCKET ASSEMBLY
-6 SHAFT AND SOCKET ASSEMBLY



-7 SOCKET HANDLE ASSEMBLY
-8 SOCKET HANDLE ASSEMBLY
-9 SOCKET HANDLE ASSEMBLY

APPROVED 6 JUNE 1967 REVISED

P.A. NAVY-AS Other Cast ARMY - MI NAVY - AS AF - 11	TITLE WRENCH, SOCKET	MILITARY STANDARD MS90395
PROCUREMENT SPECIFICATION NONE	SUPSEDES: BUORD 677037, 677038, 813952	SHEET 2

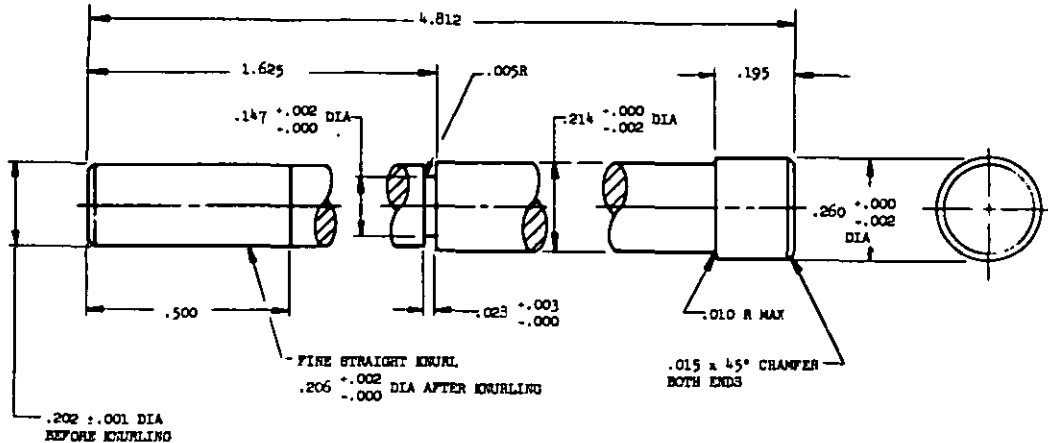
FED. SUP CLASS
5990

NOTICE - REVIEW/USER INFORMATION IS CURRENT AS OF DATE OF THIS DOCUMENT. FOR FUTURE COORDINATION OF CHANGES TO THIS DOCUMENT, DRAFT CIRCULATION SHOULD BE BASED ON THE INFORMATION IN THE CURRENT DODLRS.

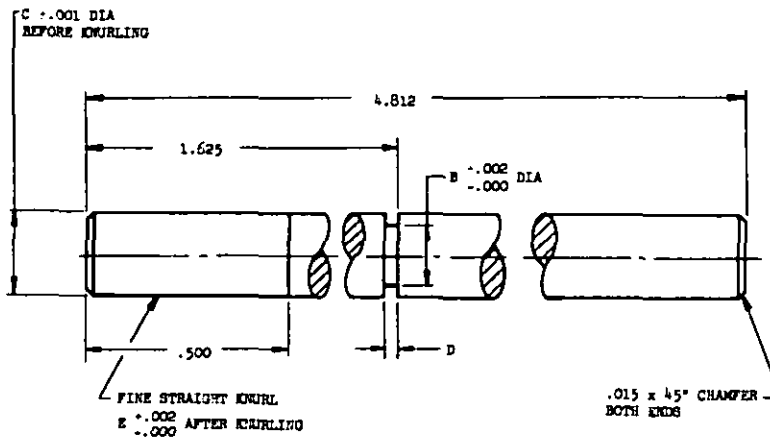
USER INTEREST:
ARMY - AV
NAVY - AS, CT, MC
AF - 17

REVIEWER INTEREST:
ARMY - M1, E1, M1
NAVY - AS, E1, E1
AF - 11, B5

This military standard is approved by the Department of Defense and is mandatory for use by all Departments & Agencies of the Department of Defense. Selection for all new engineering and design applications and for repetitive use shall be made from this document.



-10 SPLINE SHAFT



(SEE TABLE III)

TABLE III

DASH NO.	A DIA	B DIA	C DIA	D	E
-11	.139	.102	.133	.017 \pm .002 \pm .000	.137
-12	.208	.147	.202	.028 \pm .003 \pm .000	.206

-11 SPLINE SHAFT
-12 SPLINE SHAFT
(SEE TABLE III)

P.A. NAVY-AS	TITLE WRENCH, SOCKET	MILITARY STANDARD MS90395
Other Cast ARMY - M NAVY - AS AF - 11		
PROCUREMENT SPECIFICATION NONE	SUPERSEDES: BUORD 677037, 677033, 9133-2	SHEET 3

DD FORM 672-1 (Coordinated)

PREVIOUS EDITIONS OF THIS FORM ARE OBSOLETE WBT

PLATE NO. 15320

APPROVED 6 JUNE 1967 REVISED

NOTICE - REVIEW/USER INFORMATION IS CURRENT AS OF DATE OF THIS DOCUMENT. FOR FUTURE COORDINATION OF CHANGES TO THIS DOCUMENT, DRAFT CIRCULATION SHOULD BE BASED ON THE INFORMATION IN THE CURRENT EDITION.

USER INTEREST:
ARMY - AV
NAVY - AS, CG, MC
AF - 17

REVIEWER INTEREST:
ARMY - MJ, EL, MI
NAVY - AS, SH
AF - 11, 65

This military standard is approved by the Department of Defense and is mandatory for use by all Departments & Agencies of the Department of Defense. Selection for all new engineering and design applications and for repetitive use shall be made from this document.

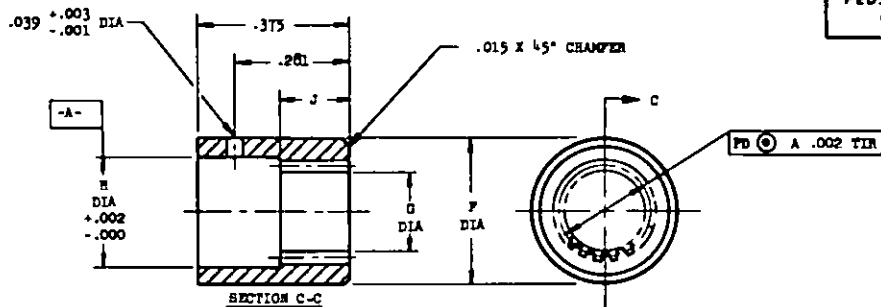


TABLE IV

DASH NO.	F DIA	G DIA	H DIA	J
-13	.240	.102 +.000 / -.003	.140	.094
-14	.300	.169 +.000 / -.003	.209	.094
-15	.359	.206 +.003 / -.000	.260	.171 +.010 / -.000

TABLE V

DATA	DASH NO.		
	-13	-14	-15
TOOTH FORM	FULL DEPTH TRUE INVOLUTE	FULL DEPTH TRUE INVOLUTE	SPECIAL DEPTH TRUE INVOLUTE
PRESSURE ANGLE	20°	20°	20°
NO. OF TEETH	13	21	22
DIAMETRAL PITCH	120	120	96
PITCH DIAMETER (DATUM)	.1083	.1750	.2291
ROOT DIAMETER (MIN)	.1330	.2000	
BACKLASH	.0005 +.0025 / -.0000	.0005 +.0025 / -.0000	
CIRCULAR SPACE WIDTH			.0164 +.0008 / -.0000
MAJOR DIAMETER			.252 +.000 / -.004

-13, -14 AND -15 SPLINE SOCKET
(SEE TABLE IV AND V)

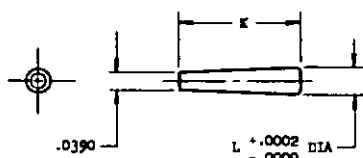


TABLE VI

DASH NO.	K	L DIA
-16	.240	.0440
-17	.300	.0453
-18	.350	.0463

* T.P.F. .250

-16, -17 AND -18 TAPER PIN
(SEE TABLE VI)

P.A. NAVY-AS Other Cust ARMY - MJ NAVY - AS AF - 11	TITLE WRENCH, SOCKET	MILITARY STANDARD MS90395
PRELIMINARY SPECIFICATION NONE	SUPERSEDES: EUCORD 677037, 677038, 813862	SHEET 4

DD FORM 672-1 (Coordinated)

PREVIOUS EDITIONS OF THIS PLM ARE OBSOLETE.

W87

PLATE NO. 15370

APPROVED 6 JUNE 1967 REVISED

NOTICE - REVIEW/USER INFORMATION IS CURRENT AS OF DATE OF THIS DOCUMENT. FOR FUTURE COORDINATION OF CHANGES TO THIS DOCUMENT, DRAFT CIRCULATION SHOULD BE BASED ON THE INFORMATION IN THE CURRENT EDITIONS.

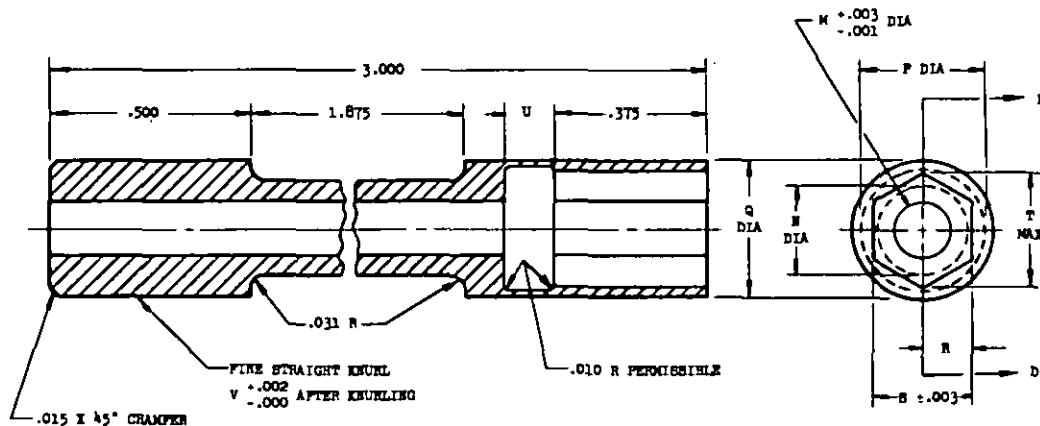
USER INTEREST:

ARMY - AV
NAVY - AS, CG, MC
AF - 17

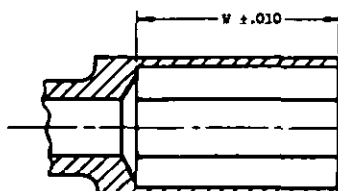
REVIEWER INTEREST:

ARMY - MU, EL, MI
NAVY - AS, SH
AF - 11, B5

This military standard is approved by the Department of Defense and is mandatory for use by all Departments & Agencies of the Department of Defense. Selection for all new engineering and design applications and for repetitive use shall be made from this document.



SECTION D-D

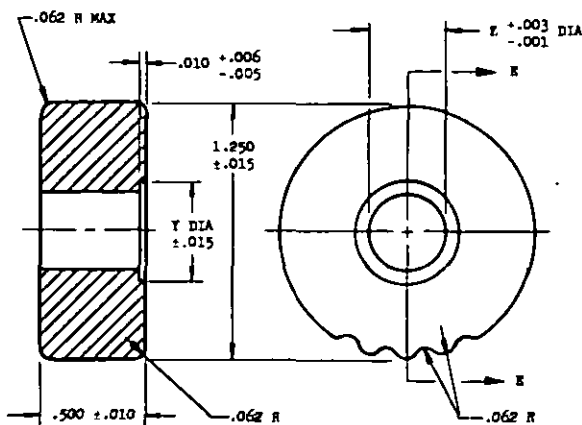


OPTIONAL CONSTRUCTION

TABLE VII

DASH NO.	M DIA	N DIA	P DIA	Q DIA	R	S	T	U	V	W
-19	.141	.235	.300 +.005 -.001	.330	.128 ±.001	.256	.295	.125 ±.010	.334	.500
-20	.210	.305	.370 +.003 -.001	.400	.158 ±.001	.318	.365	.125 ±.010	.404	.500
-21	.218	.305	.622	.675	.222 ±.004	.445	.517	.171 ±.010	.404	.546 ±.020

-19, -20 AND -21 SOCKET SHAFT
(SEE TABLE VII)



SECTION E-E

TABLE VIII

DASH NO.	Y DIA	Z DIA	GROOVE DATA	
			NO. OF GROOVES	DEPTH
-22	.250	.128	20	.048
-23	.312	.196	20	.048
-24	.437	.324	20	.048
-25	.500	.394	20	.048

-22, -23, -24 AND -25 HANDLE
(SEE TABLE VIII)

P.A. NAVY - AS	TITLE	MILITARY STANDARD
Other Cust ARMY - MU NAVY - AS AF - 11	WRENCH, SOCKET	MS90395
PRELIMINARY SPECIFICATION NONE	SUPERSEDES: EEDORD 677037, 677038, 813862	SHEET 5

FED. SUP CLASS
5990**NOTES:**

1. MATERIAL: (A) SPLINE SHAFT -10, -11, AND -12; ALUMINUM ALLOY 6061, QQ-A-220/B, TEMPER T6.
(B) SOCKET SHAFT -19, -20 AND -21; STEEL, CORROSION RESISTING, QQ-S-763, CLASS A10, COND A, ANNEALED.
(C) SPLINE SOCKET -13, -14 AND -15; STAIN ROD, QQ-S-626, COND 11, HALF HARD.
(D) HANDLE -22, -23, -24 AND -25; MOLDED PHENOLIC RESIN, THERMOSETTING MIL-M-14, TYPE CPG.
(E) TAPER PIN -16, -17, AND -18; STEEL, CORROSION RESISTING, QQ-S-763, CLASS A20, COND A, ANNEALED.
2. FINISH: (A) SPLINE SOCKET -13, -14, AND -15; NICKEL PLATE, QQ-N-290, CLASS 2, .0001 TO .0003 THICK.
3. SURFACE ROUGHNESS: SPLINE SHAFT -10, -11, AND -12, SOCKET SHAFT -19, -20, AND -21, SPLINE SOCKET -13, -14, AND -15; FINISH ALL OVER 125/ HANDLE -22, -23, -24 AND -25; SHALL BE AS MOLDED, BLEND ALL RADII. SURFACE CONDITION FINISH DESIGNATIONS SHALL BE INTERPRETED IN ACCORDANCE WITH MIL-STD-10.
4. HEAT TREATMENT: TAPER PIN -16, -17, AND -18; HEAT TO 1825° F ±25° F., QUENCH IN OIL, DRAW AT APPROX 600° F. FOR 1/2 HOUR TO ROCKWELL C49-52.
5. REMOVE ALL BURRS AND BREAK ALL SHARP EDGES.
6. DIMENSIONS IN INCHES. UNLESS OTHERWISE SPECIFIED, TOLERANCE: DECIMALS ±.005, ANGLES ±1°. ALL DIMENSIONS FOR SPLINE SOCKET -13, -14, AND -15, SHALL APPLY AFTER PLATING. INTERPRET DIMENSIONING AND TOLERANCING IN ACCORDANCE WITH MIL-STD 8.

FOR DESIGN FEATURE PURPOSES, THIS STANDARD TAKES PRECEDENCE OVER PROCUREMENT DOCUMENTS REFERENCED HEREIN.
REFERENCED DOCUMENTS SHALL BE OF THE ISSUE IN EFFECT ON DATE OF INVITATIONS FOR BID.

P.A. NAVY -AS Other Cast ARMY - MU NAVY - AS AF - 11	TITLE WRENCH, SOCKET	MILITARY STANDARD
		MS90395
PROCUREMENT SPECIFICATION NONE	SUPERSEDES: SUORD 677037, 677038, 613862	SHEET 6

DD FORM 672-1 (Coordinated)

PREVIOUS EDITIONS OF THIS FORM ARE OBSOLETE.

W87

PLATE NO. 15320

APPROVED 6 JUNE 1967 REVISED

NOTICE - REVIEW/USER INFORMATION IS CURRENT AS OF DATE OF THIS DOCUMENT. FOR FUTURE COORDINATION OF CHANGES TO THIS DOCUMENT, DRAW CIRCULATION SHOULD BE BASED ON THE INFORMATION IN THE CURRENT EDITION.

USER INTEREST:
ARMY - AV
NAVY - AS, CG, MC
AF - 17

REVIEWER INTEREST:
ARMY - MC, P, VI
NAVY - A, VI
AF - 11, B5

This military standard is approved by the Department of Defense and is mandatory for use by all Departments & Agencies of the Department of Defense. Selection for all new engineering and design applications and for repetitive use shall be made from this document.