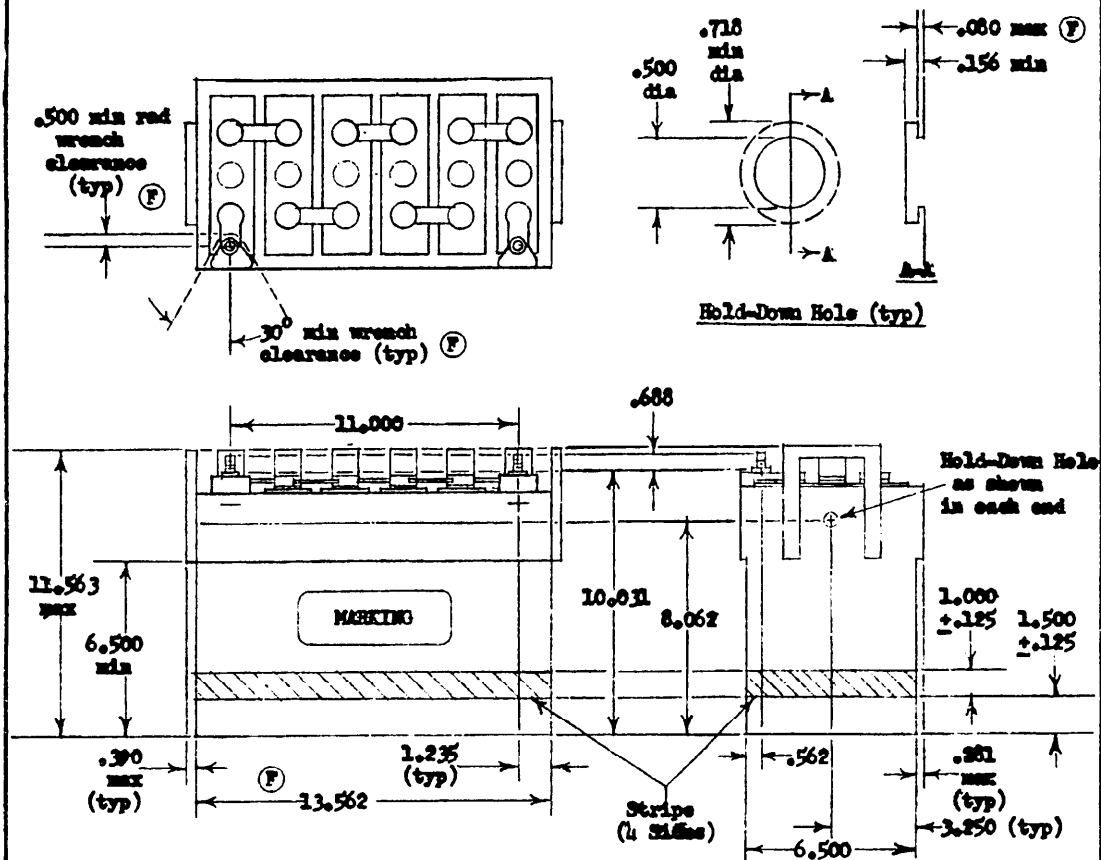


FED. SUP CLASS
6140

MS Part Number	Duty	Dis-charge Rate	Nomi-nal Poten-tial, Volts	Nomi-nal Capa-city, Amper-Hours	Max. Wt., lbs.	Color of Stripe
MS90379-1*	Medium	-	12.00	54	80	-
-2	Heavy	Low	12.63	54	84	Black
-3	"	Low	11.37	54	77	Yellow
-4	"	High	12.63	48	84	Red
-5	"	High	11.37	48	77	Green
-6	"	Low	24.00	54	161	Consists of one MS90379-2 and one MS90379-3.
-7	"	High	24.00	48	161	Consists of one MS90379-4 and one MS90379-5.

*INACTIVE PART NUMBER. Part Number MS90379-1 is inactive for design - no new aircraft shall be designed to use this battery, nor shall any existing aircraft be modified to use it.

This standard has been approved by the Naval Air Systems Command, Department of the Navy, and is mandatory for use by that activity. All other military activities are required to employ this standard where suitable.

P.A. Navy - AS Other Cust	TITLE BATTERIES, STORAGE, AIRCRAFT, TWO-PART, THREADED-POST-CONNECTED, LARGE	MILITARY STANDARD
		MS 90379(AS)
Procurement Specification MIL-B-8565	SUPERSEDES:	SHEET 1 OF 2

FED. SUP CLASS
6140

NOTES.

1. DIMENSIONS. The dimensions of each battery shall be as shown on sheet 1. All dimensions are in inches. All tolerances are ± 0.031 unless otherwise specified.
2. MS PART NUMBERS. The MS part numbers of the batteries shall be as listed on sheet 1.
3. NOMINAL POTENTIAL. The nominal potential of each battery shall be as listed on sheet 1.
4. ELECTRIC CONNECTIONS. Each battery shall include as its electric connections two threaded posts as shown on sheet 1 having 5/16-18 NC-2 threads.
5. VENTING PLUGS. Each medium duty battery shall include a venting plug conforming to MS25185 installed in each cell, and each cell shall be airtight except for the venting plug.
6. HANDLES. Each battery shall include two handles as shown on sheet 1, suitable for carrying the battery by hand.
7. NOMINAL CAPACITY. The nominal capacity of each battery shall be as listed on sheet 1.
8. WEIGHT. The weight of each battery filled with electrolyte shall not exceed the value listed on sheet 1 in any state of charge.
9. STRIPE. Each heavy duty battery shall be marked on four sides with a stripe of the color listed on sheet 1.
10. MOUNTING. When the battery must be mounted for testing, it shall be clamped in the cradle by suitable hooks engaged in the hold-down holes in the ends of the battery.
11. SPECIFICATION. The batteries shall conform to requirements of MIL-B-8565 for maintainable, threaded-post-connected, cradle-mounted batteries as modified above and as follows:

GENERAL: Replace "design standard", wherever it occurs, with "procurement standard".

3.8.2 THREADED-POST-CONNECTED BATTERIES. Delete the fifth sentence, beginning "Each battery shall be made-----".

⑦ 4.7.23 TEMPERATURE SHOCK. Delete.

⑦ Entire standard revised and redrawn.

Project Number 6140-M309.

P.A. Navy - AS Other Cust	TITLE BATTERIES, STORAGE, AIRCRAFT, TWO-PART, THREADED-POST-CONNECTED, LARGE	MILITARY STANDARD
		MS 90379(AS)
Procurement Specification MIL-B-8565	SUPERSEDES:	SHEET 2 OF 2

This standard has been approved by the Naval Air Systems Command, Department of the Navy, and is mandatory for use by that activity. All other military activities are required to employ this standard where applicable.

APPROVED 26 MAY 65 REVISED ⑦ 12 MAR 71