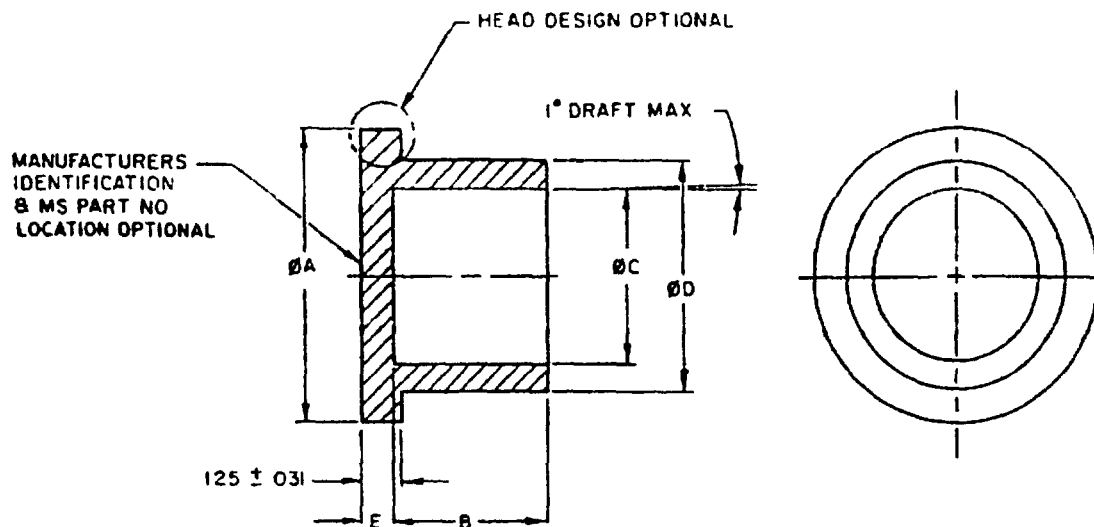


REQUIREMENTS FOR ACQUIRING THE PRODUCT(S) DESCRIBED HEREIN SHALL CONSIST OF THE FOLLOWING SPECIFICATION LISTED IN THE SOLICITATION MIL-C-5501



DASH NO 1/	ØA ± 0.31	B ± 0.31	ØC ± 0.10	ØD ± 0.10	E ± 0.10	SUPSEDES
-8Y	670	625	413	483	040	MS25177-8
-8A	740	500	480	540	040	MS25178-8
-10Y	750	625	530	595	040	MS25177-10
-10A	840	500	605	665	040	MS25178-10
-12Y	860	625	655	715	040	MS25177-12
-12A	970	500	720	775	040	MS25178-12
-14Y	1,031	625	785	845	045	MS25177-14
-14A	1,125	500	850	905	045	MS25178-14
-16Y	1,125	625	895	965	045	MS25177-16
-16A	1,220	500	975	1,035	045	MS25178-16
-18Y	1,250	625	1,025	1,085	045	MS25177-18
-18A	1,350	500	1,095	1,155	045	MS25178-18
-20Y	1,404	625	1,150	1,215	050	MS25177-20
-20A	1,505	500	1,220	1,280	050	MS25178-20
-22Y	1,505	625	1,270	1,330	050	MS25177-22
-22A	1,610	500	1,340	1,400	050	MS25178-22
-24Y	1,610	625	1,390	1,450	050	MS25177-24
-24A	1,720	500	1,460	1,520	050	MS25178-24
-26Y	1,720	625	1,510	1,570	055	MS25177-26
-26A	1,830	500	1,580	1,640	055	MS25178-26
-28Y	1,830	625	1,630	1,690	055	MS25177-28
-28A	1,940	500	1,700	1,760	055	MS25178-28
-30Y	1,940	625	1,750	1,810	055	MS25177-30
-30A	2,050	500	1,820	1,880	055	MS25178-30
-32Y	2,050	625	1,870	1,930	055	MS25177-32
-32A	2,160	500	1,940	2,000	055	MS25178-32
-34Y	2,160	625	1,990	2,050	055	MS25177-34
-34A	2,270	500	2,060	2,120	055	MS25178-34
-36Y	2,270	625	2,110	2,170	060	MS25177-36
-36A	2,380	500	2,180	2,240	060	MS25178-36
-38Y	2,380	625	2,230	2,290	060	MS25177-38
-38A	2,490	500	2,300	2,360	060	MS25178-38
-40Y	2,490	625	2,350	2,410	060	MS25177-40
-40A	2,600	500	2,420	2,480	060	MS25178-40
-42Y	2,600	625	2,470	2,530	060	MS25177-42
-42A	2,710	500	2,540	2,600	060	MS25178-42
-44Y	2,710	625	2,590	2,650	060	MS25177-44
-44A	2,820	500	2,660	2,720	060	MS25178-44
-46Y	2,820	625	2,710	2,770	060	MS25177-46
-46A	2,930	500	2,780	2,840	060	MS25178-46
-48Y	2,930	625	2,830	2,890	060	MS25177-48
-48A	3,040	500	2,900	2,960	060	MS25178-48

1/ THE Y OR R SHALL BE FOLLOWED BY B FOR CONDUCTIVE CAPS.

REQUIREMENTS

- MATERIAL TYPE
 - A POLYETHYLENE, L-P-390, TYPE I, CLASS I, GRADE OPTIONAL
 - B ELECTROSTATIC FREE MATERIAL CONFORMING TO MIL-B-81705, TYPE II
 - C CONDUCTIVE MATERIAL CONFORMING TO MIL-B-81705, TYPE I
- COLOR CODING Y = YELLOW, R = RED, COLORS IN ACCORDANCE WITH MIL-STD-104
YB, RB - BLACK COLOR FOR CONDUCTIVE CAPS ONLY
- THE PART NUMBER SHALL BE MARKED ON EACH CAP WITH RAISED CHARACTERS
- THE MANUFACTURERS IDENTIFICATION SHALL CONSIST OF MANUFACTURERS' SYMBOL, TRADEMARK OR SOURCE CODE

NOTES

- DIMENSIONS ARE IN INCHES
- EXAMPLE OF PART NUMBER MS90376 - 18Y E

BASIC PART NUMBER

DASH NUMBER

BLANK FOR TYPE A
 F FOR TYPE B
 B (BLACK) FOR TYPE C

3 FOR DESIGN FEATURE PURPOSES, THIS SPECIFICATION SHEET TAKES PRECEDENCE OVER ACQUISITION DOCUMENTS REFERENCED HEREIN
REFERENCED DOCUMENTS SHALL BE OF THE ISSUE IN EFFECT ON DATE OF INVITATIONS FOR BID

⑤ DENOTES CHANGE Changes reflect corrections and those items not denoted as changes in Revision D

PREPARING ACTIVITY NAVY-AS	MILITARY SPECIFICATION SHEET	SPECIFICATION SHEET NUMBER 25 May 93
CUSTODIANS ARMY-ER NAVY-AS	TITLE CAP, DUST, PLASTIC, ELECTRIC CONNECTOR	MS90376 REV E
AIR FORCE-85 DLA-		SUPERSEDING MS90376 D 30 JUN 92
REVIEW ARMY-AR, SL, WC, DSA-IS		AMSC- N/A FSC 5340
USER ARMY-AV		
PROJECT NUMBER 5340-2149		

DISTRIBUTION STATEMENT A Approved for public release distribution is unlimited

Page 1 of 1