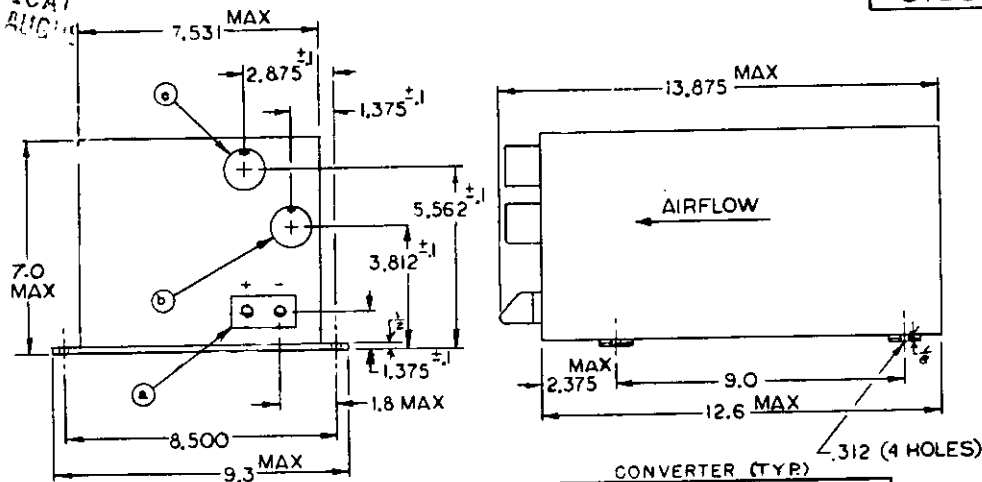
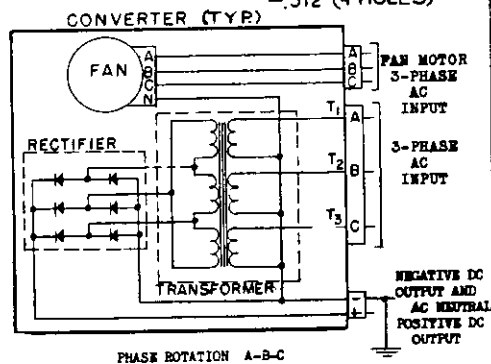


FED. SUP CLASS
6125

- (a) TERMINAL BOARD MS25044-1
 (b) RECEPTACLE TO FIT PLUG MS3106R-16-10S (A)
 (c) RECEPTACLE TO FIT PLUG MS3106R-14S-7S (FAN MOTOR)(A)

INPUT	
VOLTAGE (NOMINAL)	115/200 VOLTS
FREQUENCY (NOMINAL)	400 CYCLES
PHASE	3
POWER FACTOR	90% MIN.
OUTPUT	
VOLTAGE (NOMINAL) D.C.	70 VOLTS
CURRENT (INTERMITTENT)	120 AMP.
EFFICIENCY	
AT SEA LEVEL, 25 ± 15°C	70% MIN.
WEIGHT (LBS)	18.75 MAX.

MS PART NO.
MS90352-1FOR ANY COMBINATION OF CONDITIONS LISTED BELOW
THE OUTPUT VOLTAGE SHALL REMAIN WITHIN THE SPECIFIED LIMITS

CONDITIONS	OUTPUT VOLTAGE LIMITS
INPUT VOLTAGE BETWEEN 111.5/193 TO 118.5/205 VOLTS AND INPUT FREQUENCY BETWEEN 380 AND 420 CPS. RATED LOAD DUTY CYCLE OF 1 MINUTE "ON" MAXIMUM, "OFF" 4 MINUTES MINIMUM FOR 6 SUCCESSIVE OPERATIONS FOLLOWED BY A 30-MINUTE COOLING PERIOD.	HIGH 77 V, LOW 65 V
AMBIENT TEMPERATURE-ALTITUDE VARIED WITHIN THE RANGE ESTABLISHED BY CURVE II OF MS33543(ASG) EXCEPT THAT THE ALTITUDE SHALL BE NO GREATER THAN 20,000 FEET.	
MOUNTED IN ANY POSITION.	

ⓑ CANCELLED AFTER 30 SEPTEMBER 1982

PROJECT NO. 6125-W153

This standard has been approved by the NAVAL AIR SYSTEMS COMMAND
Department of the NAVY and is mandatory for use by
that activity. All other military activities are required
to employ this standard where suitable.

P.A. NAVY - AS Other Cust	TITLE CONVERTER, 120 AMPERE, AIRCRAFT, FOR AN/AVQ-2C CARBON ARC SEARCHLIGHT.	MILITARY STANDARD MS90352 (AS)
PROCUREMENT SPECIFICATION MIL-C-7115	SUPERSEDES:	SHEET 1 OF 2

DD FORM 672-1 (Limited coordination)
1 SEP 57

PREVIOUS EDITIONS OF THIS FORM ARE OBSOLETE.

APPROVED 2 NOVEMBER 1964, REVISED (A) 16 NOVEMBER 1970 ⓑ 30 SEPTEMBER 1982