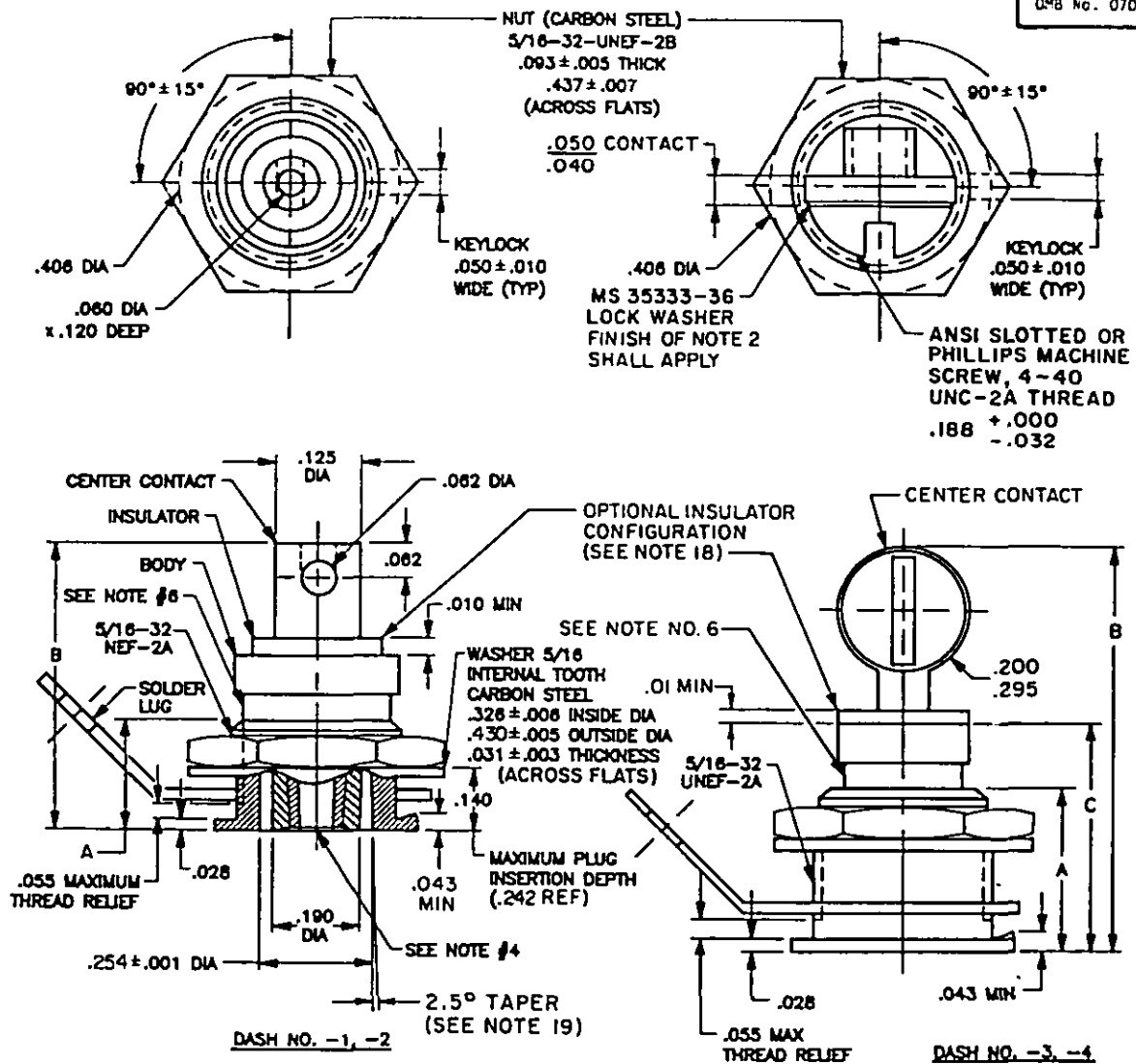
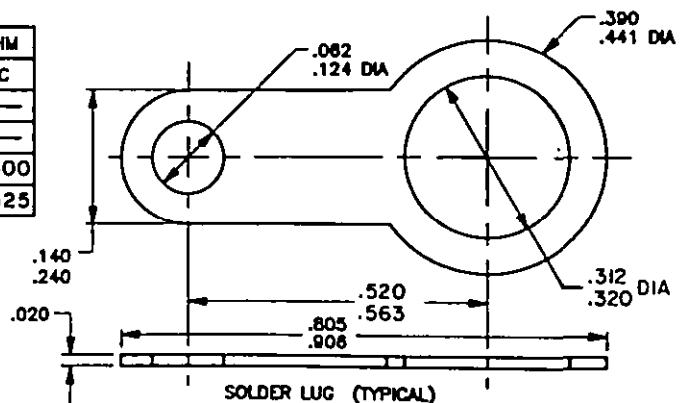


THIS SPECIFICATION IS APPROVED FOR USE  
BY ALL DEPARTMENTS AND AGENCIES OF THE  
DEPARTMENT OF DEFENSE.



DASH NO	DIMENSION		TERMINAL TYPE	DIM C
	A	B		
-1	.250±.010	.590 MAX	SOLDER	—
-2	.375±.010	.718 MAX	SOLDER	—
-3	.250±.010	.750 MAX	SCREW	.400
-4	.375±.010	.875 MAX	SCREW	.525

PANEL GROUND TYPE  
RECEPTACLES CENTER  
CONTACT POSITIVE



© ENTIRE STANDARD REVISED

PREPARING ACTMITY: NAVY-AS  
CUSTODIANS: ARMY-AV NAVY-AS  
AIR FORCE-II OLA-  
REVIEW: NAVY-MC, SH  
USER:  
PROJECT NUMBER: 5935-N300

**MILITARY SPECIFICATION SHEET**

**TITLE** CONNECTOR, RECEPTACLES,  
PLUGS, ADAPTOR, EL, EMBEDDED,  
PRINTED CIRCUIT BOARD LAMP  
LIGHTING PANELS

SPECIFICATION SHEET NUMBER  
**MS 90335C** 12 FEB 90

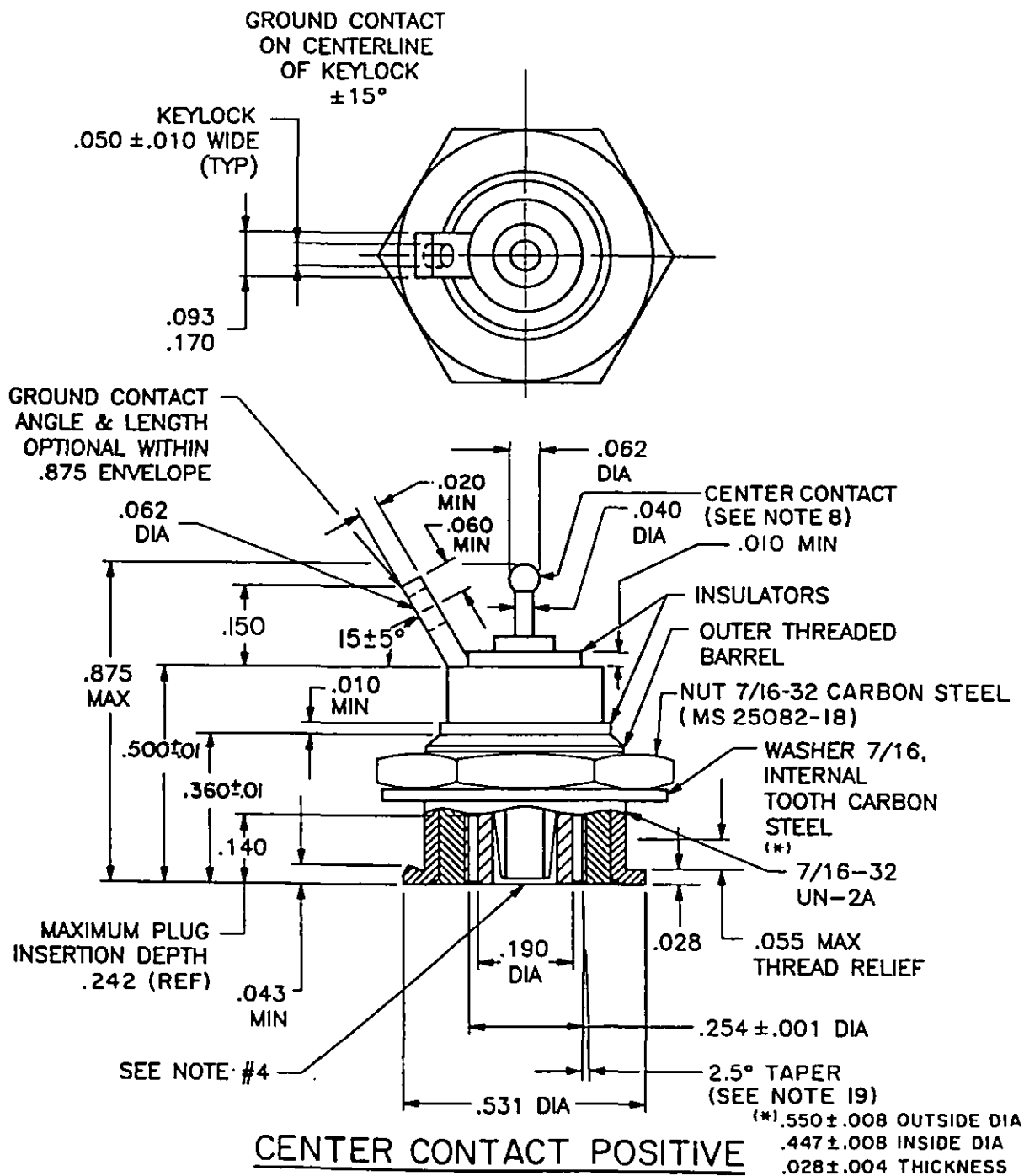
SUPERSEDING  
MS 90335B 30 DEC 1976

AMSC-	N/A	FSC 5935
-------	-----	----------

DISTRIBUTION STATEMENT A. Approved for public release; distribution is unlimited.

Page 1 of 6

THE REQUIREMENTS FOR ACQUIRING THE PRODUCT(S) DESCRIBED HEREIN SHALL CONSIST OF THIS SPECIFICATION SHEET AND THE ISSUE OF THE FOLLOWING SPECIFICATION LISTED IN THAT ISSUE OF THE DODISS SPECIFIED IN THE SOLICITATION: MIL-P-7788



©ENTIRE STANDARD REVISED

PREPARING ACTIVITY: NAVY-AS  
CUSTODIANS: ARMY-AV NAVY-AS  
AIR FORCE-II DLA-  
REVIEW: NAVY-MC, SH  
USER:  
PROJECT NUMBER: 5935-N300

MILITARY SPECIFICATION SHEET  
TITLE CONNECTOR, RECEPTACLES,  
PLUGS, ADAPTOR, EL, EMBEDDED,  
PRINTED CIRCUIT BOARD LAMP  
LIGHTING PANELS

SPECIFICATION SHEET NUMBER  
**MS 90335C** 12 FEB 90

SUPERSEDING  
MS 90335B 30 DEC 1976

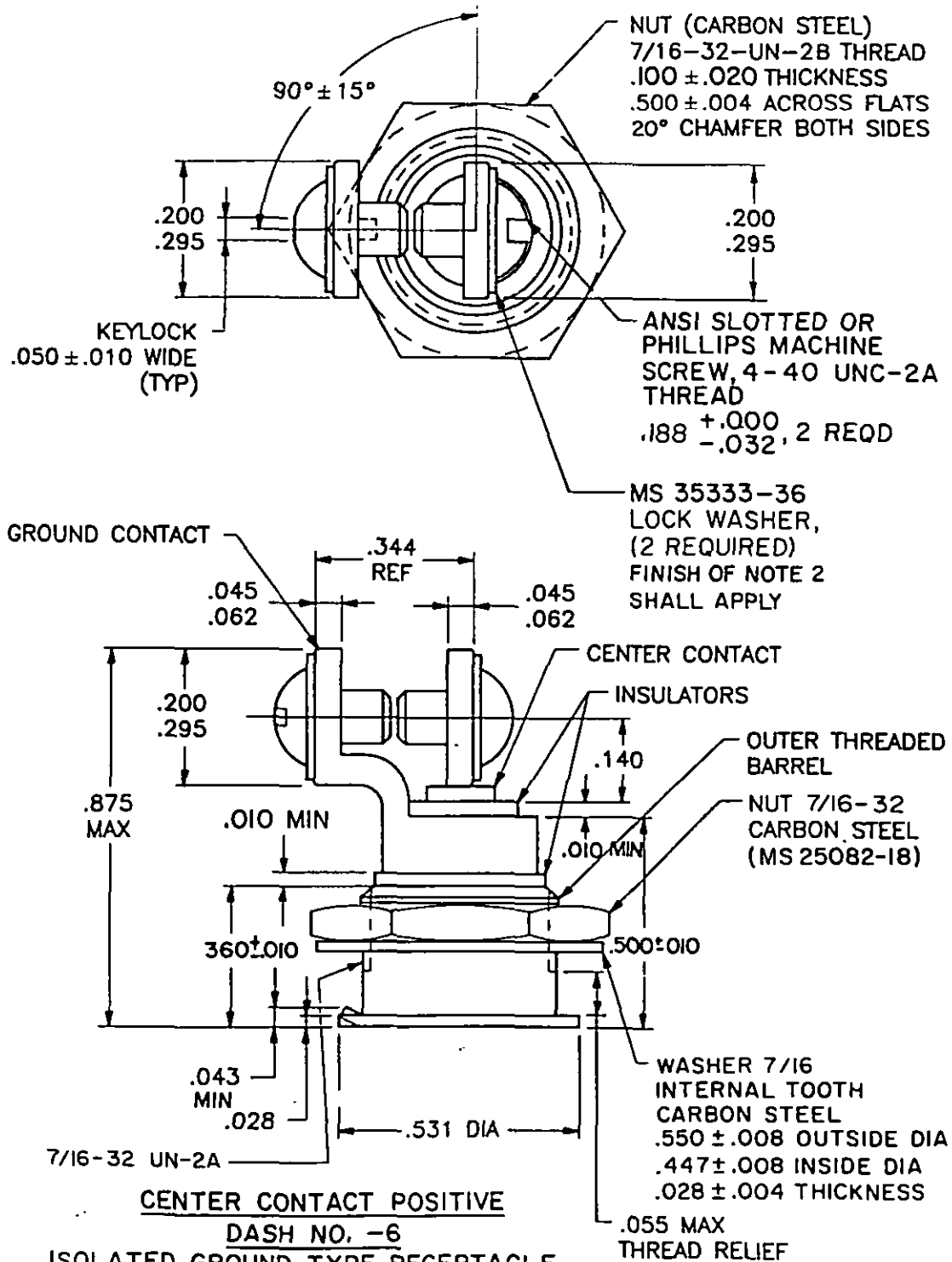
AMSC- N/A FSC 5935

DISTRIBUTION STATEMENT A. Approved for public release; distribution is unlimited

Page 2 of 6

THIS SPECIFICATION IS APPROVED FOR USE BY ALL DEPARTMENTS AND AGENCIES OF THE DEPARTMENT OF DEFENSE.

THE REQUIREMENTS FOR ACQUIRING THE PRODUCT(S) DESCRIBED HEREIN SHALL CONSIST OF THIS SPECIFICATION SHEET AND THE ISSUE OF THE FOLLOWING SPECIFICATION LISTED IN THAT ISSUE OF THE DODISS SPECIFIED IN THE SOLICITATION. MIL-P-7788



© ENTIRE STANDARD REVISED

PREPARING ACTIVITY: NAVY-AS  
CUSTODIANS: ARMY-AV NAVY-AS  
AIR FORCE-II DLA-  
REVIEW: NAVY-MC, SH  
USER:  
PROJECT NUMBER: 5935-N300

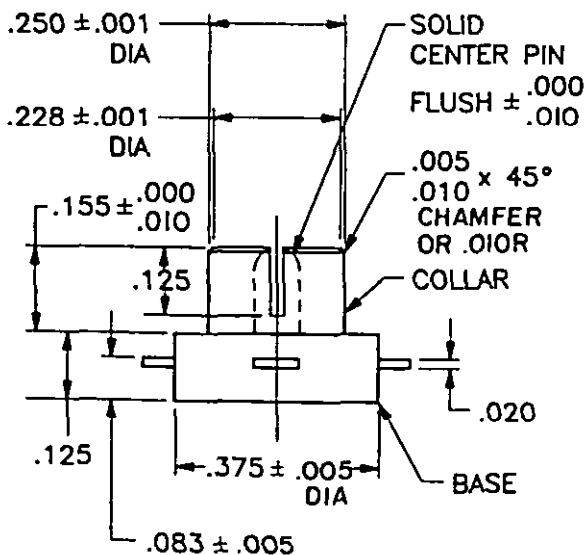
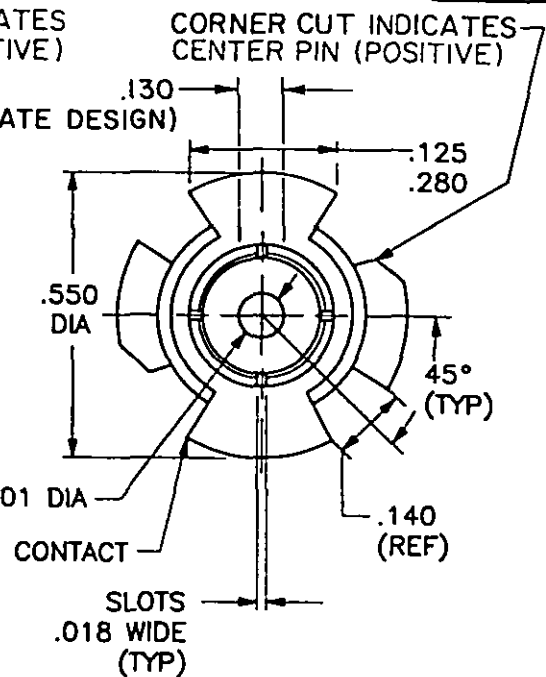
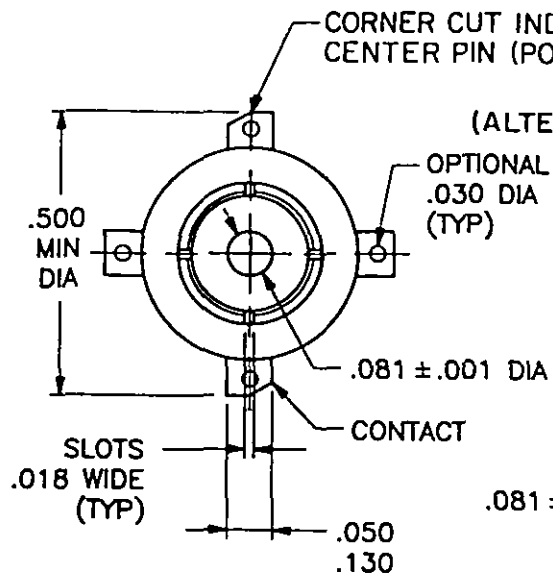
MILITARY SPECIFICATION SHEET  
TITLE: CONNECTOR, RECEPTABLES,  
PLUGS, ADAPTOR, EL, EMBEDDED,  
PRINTED CIRCUIT BOARD LAMP  
LIGHTING PANELS

SPECIFICATION SHEET NUMBER  
**MS 90335C** 12 FEB 90  
SUPERSEDING  
MS 90335B 30 DEC 1976  
AMSC- N/A FSC 5935

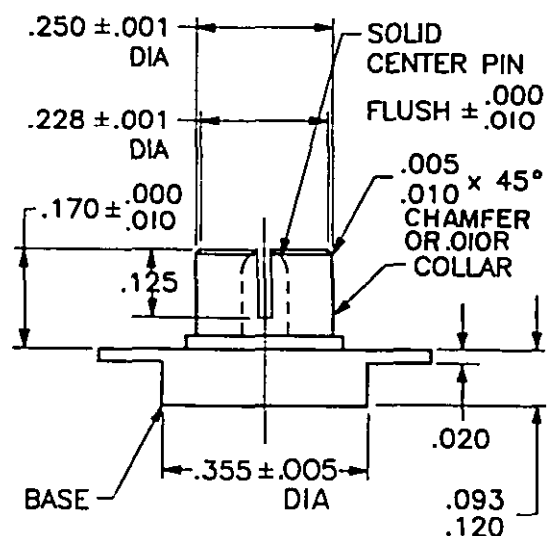
DISTRIBUTION STATEMENT A. Approved for public release; distribution is unlimited.

Page 3 of 6

THE REQUIREMENTS FOR ACQUIRING THE PRODUCT(S) DESCRIBED HEREIN SHALL CONSIST OF THIS SPECIFICATION SHEET AND THE ISSUE OF THE FOLLOWING SPECIFICATION LISTED IN THAT ISSUE OF THE DODISS SPECIFIED IN THE SOLICITATION: MIL-P-7788



**CENTER CONTACT POSITIVE**  
**DASH NO. -7**  
**FOR EMBEDDED**  
**APPLICATION**



**CENTER CONTACT POSITIVE**  
**DASH NO. -8**  
**FOR PRINTED CIRCUIT**  
**BOARD APPLICATION**

© ENTIRE STANDARD REVISED

PREPARING ACTIVITY: NAVY-AS  
CUSTODIANS: ARMY-AV NAVY-AS  
AIR FORCE-II DLA-  
REVIEW: NAVY-MC, SH  
USER:  
PROJECT NUMBER: 5935-N300

MILITARY SPECIFICATION SHEET  
TITLE CONNECTOR, RECEPTABLES,  
PLUGS, ADAPTOR, EL, EMBEDDED,  
PRINTED CIRCUIT BOARD LAMP  
LIGHTING PANELS

SPECIFICATION SHEET NUMBER  
**MS 90335C** 12 FEB 90  
SUPERSEDING  
MS 90335B 30 DEC 1976  
AMSC- N/A FSC 5935

DISTRIBUTION STATEMENT A Approved for public release; distribution is unlimited

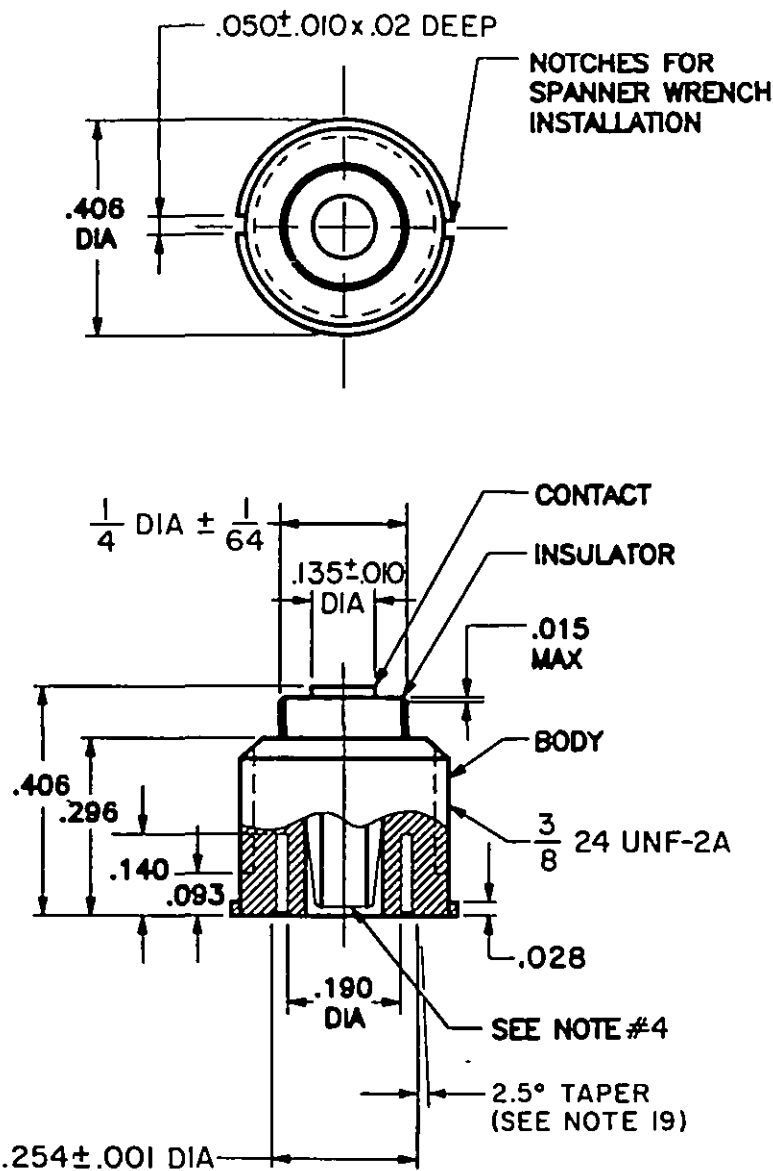
Page 4 of 6

DD FORM 672 MAY 1988

PREVIOUS EDITIONS OF THIS FORM ARE OBSOLETE

THIS SPECIFICATION IS APPROVED FOR USE BY ALL DEPARTMENTS AND AGENCIES OF THE DEPARTMENT OF DEFENSE.

THE REQUIREMENTS FOR ACQUIRING THE PRODUCT(S) DESCRIBED HEREIN SHALL CONSIST OF THIS SPECIFICATION SHEET AND THE ISSUE OF THE FOLLOWING SPECIFICATION LISTED IN THAT ISSUE OF THE DODISS SPECIFIED IN THE SOLICITATION: MIL-P-7788



INCHES	MM
.001	.03
.002	.06
.003	.08
.004	.10
.005	.13
.006	.15
.010	.25
.015	.38
.018	.46
.020	.51
.028	.71
.030	.76
.031	.79
.032	.81
.040	1.02
.043	1.09
.045	1.14
.050	1.27
.055	1.40
.060	1.52
.062	1.57
.070	1.78
.081	2.05
.083	2.11
.093	2.35
.100	2.54
.120	3.05
.124	3.15
.125	3.18
.130	3.30
.135	3.40
.140	3.56
.155	3.94
.170	4.32
.188	4.78
.190	4.83
.200	5.08
.210	5.33
.228	5.79
.240	6.10
.250	6.35
.252	6.40
.254	6.45
.280	7.11
.290	7.37
.295	7.49
.296	7.52
.297	7.54
.310	7.87
.312	7.92
.320	8.13
.326	8.28
.344	8.74
.355	9.02
.360	9.14
.375	9.52
.370	9.91
.400	10.16
.406	10.19
.430	10.92
.437	11.10
.441	11.20
.500	12.70
.520	13.21
.525	13.34
.531	13.49
.550	13.97
.563	14.30
.577	14.65
.590	14.99
.715	18.16
.718	18.24
.750	19.05
.805	20.45
.875	22.22
.936	23.10

**CENTER CONTACT POSITIVE**  
**DASH NO. -9**  
**ADAPTOR**

© ENTIRE STANDARD REVISED

PREPARING ACTMITY: NAVY-AS  
CUSTODIANS: ARMY-AV NAVY-AS  
AIR FORCE-II DLA-  
REVIEW: NAVY- MC, SH  
USER:  
PROJECT NUMBER: 5935-N300

MILITARY SPECIFICATION SHEET  
TITLE CONNECTOR, RECEPTACLES,  
PLUGS, ADAPTOR, EL, EMBEDDED,  
PRINTED CIRCUIT BOARD LAMP  
LIGHTING PANELS

SPECIFICATION SHEET NUMBER  
**MS 90335C** 12 FEB 90  
SUPERSEDING  
MS 90335B 30 DEC 1976  
AMSC- N/A FSC 5935

DISTRIBUTION STATEMENT A Approved for public release; distribution is unlimited.

Page 5 of 6

THIS SPECIFICATION IS APPROVED FOR USE BY ALL DEPARTMENTS AND AGENCIES OF THE DEPARTMENT OF DEFENSE.

## NOTES:

1. MATERIAL: DASH NO. -1, -2, -3, -4, -5, -6, -9: BODY - HALF HARD BRASS PER QQ-B-626; INSULATOR - POLYTETRAFLUOROETHYLENE PER MIL-P-19468; CENTER CONTACT - BERYLLIUM COPPER PER QQ-C-530, HEAT TREAT PER MIL-H-7199.  
DASH NO. -1, -2, -3, -4: SOLDER LUG - HALF HARD BRASS PER QQ-B-613B.  
DASH NO. -5, -6: GROUND CONTACT - BRASS PER QQ-B-626.  
DASH NO. -7: CENTER PIN - HALF HARD BRASS PER QQ-B-626; COLLAR - BERYLLIUM COPPER PER QQ-C-530, HEAT TREAT PER MIL-H-7199; BASE INSULATOR - METHACRYLATE PER L-P-380, CLEAR; ALTERNATE BASE INSULATORS - POLYVINYLIDENE FLUORIDE PER MIL-P-46122B, TYPE I, GRADE E, NATURAL; POLYCARBONATE PER MIL-P-46144, CLEAR.
2. DASH NO. -8: CENTER PIN - HALF HARD BRASS PER QQ-B-626; COLLAR - BERYLLIUM COPPER PER QQ-C-530, HEAT TREAT PER MIL-H-7199; BASE INSULATOR - POLYVINYLIDENE FLUORIDE PER MIL-P-46122B, TYPE I, GRADE E, NATURAL.  
FINISH: DASH NO. -1, -2, -3, -4, -5, -6, -7, -8, -9: CENTER & GROUND CONTACTS - GOLD PLATED PER MIL-G-45204, TYPE II, GRADE C, CLASS 0 (.000030 MIN THK), OVER COPPER STRIKE PER MIL-C-14550.  
DASH NO. -1, -2, -3, -4, -5, -6, -9: HARDWARE - ELECTRODEPOSITED NICKEL PER QQ-N-290, CLASS 1, GRADE F (.0004), OVER COPPER PER MIL-C-14550.  
DASH NO. -5, -6: OUTER THREADED BARREL - ELECTRODEPOSITED NICKEL PER QQ-N-290, CLASS 1, GRADE F (.0004 THK), OVER COPPER PER MIL-C-14550.  
DASH NO. -1, -2, -3, -4: SOLDER LUG - TIN PLATED PER MIL-T-10727, TYPE I (ELECTRODEPOSITED), .0003-.0005 THK OVER COPPER FLASH PER MIL-C-14450.
3. DIMENSIONS IN INCHES. TOLERANCES: DECIMALS  $\pm .005$ , UNLESS OTHERWISE SPECIFIED.
4. DASH NO. -1, -2, -3, -4, -5, -6, -9: FEMALE CENTER CONTACT FINGERS CLOSED DOWN UNIFORMLY TO MEET 4 OZ MINIMUM WITHDRAWAL FORCE WITH .079 DIA PIN, BEFORE AND AFTER 3 INSERTIONS OF .082 DIA PIN.
5. WHEN MATED WITH 7, 8 PLUG THAT HAS BEEN INSERTED TO  $.100 \pm .005$  DEPTH THE WITHDRAW FORCE SHALL NOT EXCEED 3 LBS. AND SHALL NOT BE LESS THAN 1 LB.
6. CAPTIVATION OF INSULATOR AND CENTER CONTACT WILL MAINTAIN 12 POUNDS FORCE WHEN APPLIED FROM INTERFACE END.
7. DASH NO. -6: SCREW LOCATIONS OPTIONAL PROVIDING MAXIMUM LENGTH OF .875 IS NOT EXCEEDED.
8. DASH NO. -1, -2, -5: TERMINATION OF CENTER CONTACTS MAY BE AS ILLUSTRATED ON DASH NUMBER SHEETS.
9. DASH NO. -7, -8: COLLAR TO HAVE MINIMUM OF 4 SLOTS AND MAXIMUM OF 6 SLOTS.
10. DASH NO. -8: ALL 4 CONTACTS SHOULD BE FULLY SOLDERED TO PRINTED CIRCUIT BOARD. VARIATION IN SOLDER TAB SIZE (.125-.280) IS INTENDED TO ALLOW FOR SPACE LIMITATIONS: FOR NEW DESIGN THE LARGER TAB AS SHOWN ON THE DRAWING IS PREFERRED. OPTIONAL CONSTRUCTION: PLUG COLLAR MAY SCREW INTO BASE PROVIDING MATING INTERFACE DIMENSIONS ARE MAINTAINED. FINAL PART MUST BE ASSEMBLED TOGETHER UTILIZING CONDUCTIVE CEMENT AND OFFER .130-.135 INSERTION DEPTH INTO FEMALE RECEPTACLE.
11. DASH NO. -9: ADAPTOR FOR CONVERTING TYPE III INFORMATION PLATES TO TYPE IV, TYPE V OR TYPE VI INFORMATION PLATES.
12. DASH NO. -1, -2, -3, -4: TO INCORPORATE SOLDER LUG PER DASH NUMBER SHEET FOR GROUNDING PURPOSES. SEE MIL-P-7788 FOR INTENDED USE.
13. DASH NO. -1, -2, -3, -4, -5, -6, -9: MANUFACTURER'S IDENTIFICATION TO BE PERMANENTLY STAMPED IN METAL PART OF RECEPTACLE.
14. THIS DRAWING IS APPLICABLE FOR MIL-P-7788 PANELS UTILIZING A SINGLE ELECTRICAL CIRCUIT. ALL MIL-P-7788 PANELS WHICH REQUIRE MULTIPLE ELECTRICAL CIRCUITS SHALL USE MIL-C-55302/108 AND /109 CONNECTOR PLUG AND RECEPTACLE. MIL-C-55302/108/109 MAY ALSO BE USED FOR SINGLE CIRCUIT LIGHT PANELS.
15. METRIC EQUIVALENTS (TO THE NEAREST .01 MM) ARE GIVEN FOR GENERAL INFORMATION ONLY AND ARE BASED UPON 1 INCH = 25.4 MM.
16. REFERENCED DOCUMENTS SHALL BE OF THE ISSUE IN EFFECT ON DATE OF INVITATIONS FOR BIDS, OR REQUEST FOR PROPOSAL, EXCEPT THAT REFERENCED ADOPTED INDUSTRY DOCUMENTS SHALL GIVE THE DATE OF THE ISSUE ADOPTED.
17. FOR DESIGN FEATURE PURPOSES, THIS STANDARD TAKES PRECEDENCE OVER PROCUREMENT DOCUMENTS REFERENCED HEREIN.
18. INSULATOR SHALL NOT EXCEED DIAMETER OF BODY.
19. ANGULAR TOLERANCE OF 2.5 DEG. TAPER IS CONTROLLED BY THE REQUIREMENTS OF NOTE 5.
20. THE CURRENT CAPABILITY OF THE MS90335 IS REGULATED BY THE CURRENT CAPACITY OF THE WIRE USED.
21. MANUFACTURERS ARE PERMITTED TO SUPPLY MS90335B CONNECTORS UNTIL 12 FEBRUARY 1992 OR DEplete THEIR INVENTORIES, WHICHEVER COMES FIRST.

## © ENTIRE STANDARD REVISED

PREPARING ACTIVITY: NAVY-AS CUSTODIANS: ARMY-AV NAVY-AS AIR FORCE-II DLA- REVIEW: NAVY-MC, SH USER: PROJECT NUMBER: 5935-N300	MILITARY SPECIFICATION SHEET TITLE CONNECTOR, RECEPTACLES, PLUGS, ADAPTOR, EL, EMBEDDED, PRINTED CIRCUIT BOARD LAMP LIGHTING PANELS	SPECIFICATION SHEET NUMBER <b>MS 90335C</b> 12 FEB 90 SUPERSEDING MS 90335B 30 DEC 1976 AMSC- N/A FSC 5935
DISTRIBUTION STATEMENT A Approved for public release; distribution is unlimited		Page <u>6</u> of <u>6</u>

THE REQUIREMENTS FOR ACQUIRING THE PRODUCT(S) DESCRIBED HEREIN SHALL CONSIST OF THIS SPECIFICATION SHEET AND THE ISSUE OF THE FOLLOWING SPECIFICATION LISTED IN THAT ISSUE OF THE DODISS SPECIFIED IN THE SOLICITATION: MIL-P-7788

THIS SPECIFICATION IS APPROVED FOR USE BY ALL DEPARTMENTS AND AGENCIES OF THE DEPARTMENT OF DEFENSE.