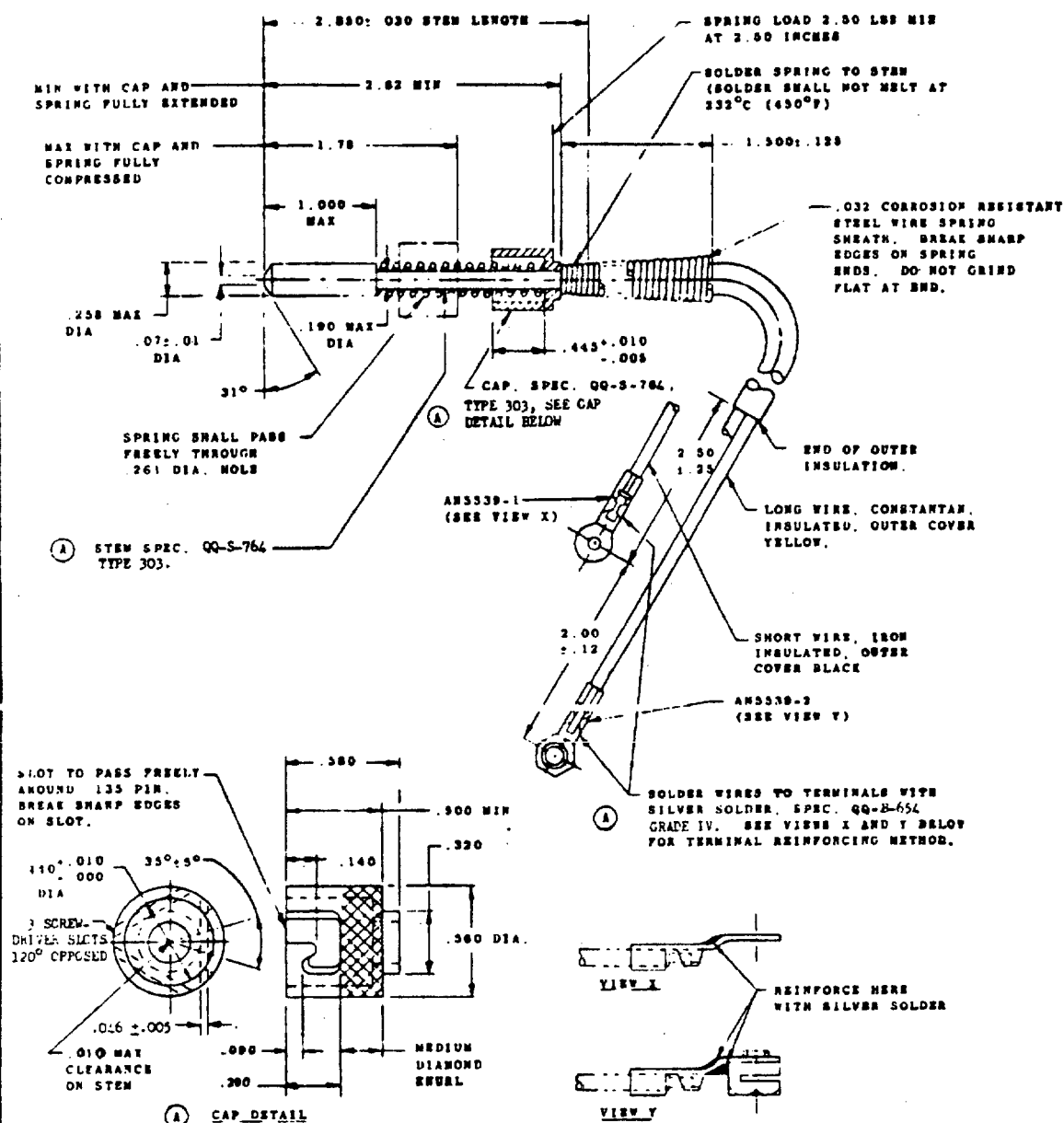


FED SUP CLASS
662C



DASH NO.
-1

LENGTH 15.00- 30 INCHES FROM THERMO-SENSITIVE TIP TO CENTER HOLE ON AN5539-2 TERMINAL. OUTER INSULATION SHALL COVER BOTH LEAD WIRES, AND SHALL EXTEND AT LEAST 0.25 INCHES TAPERED SPRING SHEATH. DIMENSIONS IN INCHES, UNLESS OTHERWISE SPECIFIED. TOLERANCES: DECIMALS +.010, ANGLES: 1°.

REFERENCED DOCUMENTS SHALL BE OF THE ISSUE IN EFFECT ON DATE OF INVITATIONS FOR BIDS.

FOR DESIGN FEATURE PURPOSES THIS STANDARD TAKES PRECEDENCE OVER PROCUREMENT DOCUMENTS REFERENCED HEREIN.

P A NAVY- AS Other Cust	TITLE THERMOCOUPLES - ENGINE CYLINDER, BAYONET TYPE	MILITARY STANDARD MS90324(AS)
PRELIMINARY SPECIFICATION UNCLASSIFIED	SUPERSEDES	SHEET 1 OF 1

APPROVED 15 SEPT. 1965 REVISED (A) 26 July 1972