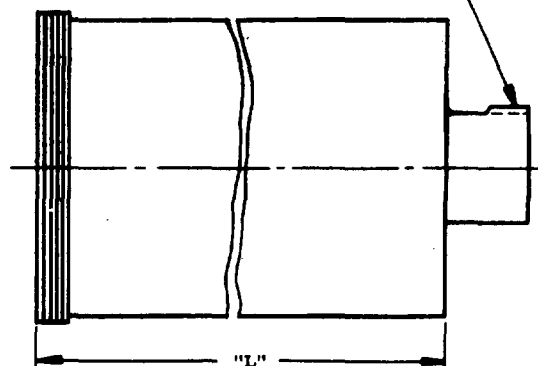
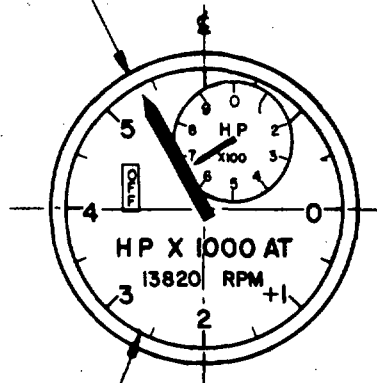
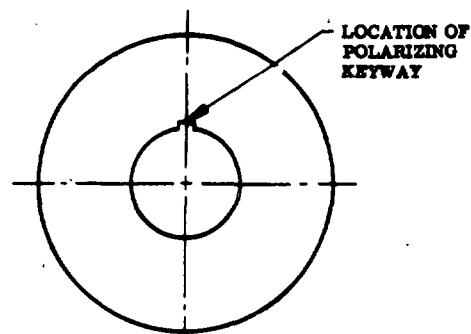


FED. SUP CLASS
6680CASE IN ACCORDANCE WITH
MS33639
(SEE TABLE)CONNECTOR TO MATE
WITH MS3116-14-158-1 PRESENTATION SHOWN
FOR REFERENCE ONLY. SEE
PROCUREMENT SPECIFICATION
FOR DETAIL REQUIREMENTS

-1



REAR VIEW

DASH NO.	CASE	DESCRIPTION	DIMENSION "L" MAX.	FLAG
-1	2 INCH	LIGHTED	7.31	WITH POWER - OFF FLAG
-2	3 INCH	LIGHTED	7.31	
-3	2 INCH	NON-LIGHTED	7.00	
-4	3 INCH	NON-LIGHTED	7.00	
-5	3 INCH	LIGHTED	7.31	WITHOUT POWER - OFF FLAG
-6	3 INCH	NON-LIGHTED	7.00	

NOTE:

DIMENSIONS IN INCHES

FOR DESIGN FEATURE PURPOSES, THIS STANDARD TAKES PRECEDENCE OVER PROCUREMENT DOCUMENTS REFERENCED HEREIN.
REFERENCED DOCUMENTS SHALL BE OF THE ISSUE IN EFFECT ON DATE OF INVITATIONS FOR BID.This standard has been approved by the NAVAL AIR SYSTEMS COMMAND
Department of the NAVY and is mandatory for use by
that activity. All other military activities are required
to comply with this standard where applicable.P.A. NAVY - AS
Other Cust

TITLE

INDICATOR, TORQUEMETER, ENGINE, TURBOPROP

MILITARY STANDARD

MS90323 (AS)

PROCUREMENT SPECIFICATION
MIL-I-22126(AS) (A)

SUPERSEDES:

MS90323 (WEPS) (A)

SHEET 1 OF 1

DD FORM 672-1 (Limited coordination)

PREVIOUS EDITIONS OF THIS FORM ARE OBSOLETE.

PLATE NO. 15320

10 January 1968

REVISED (A)

APPROVED 15 JULY 1964