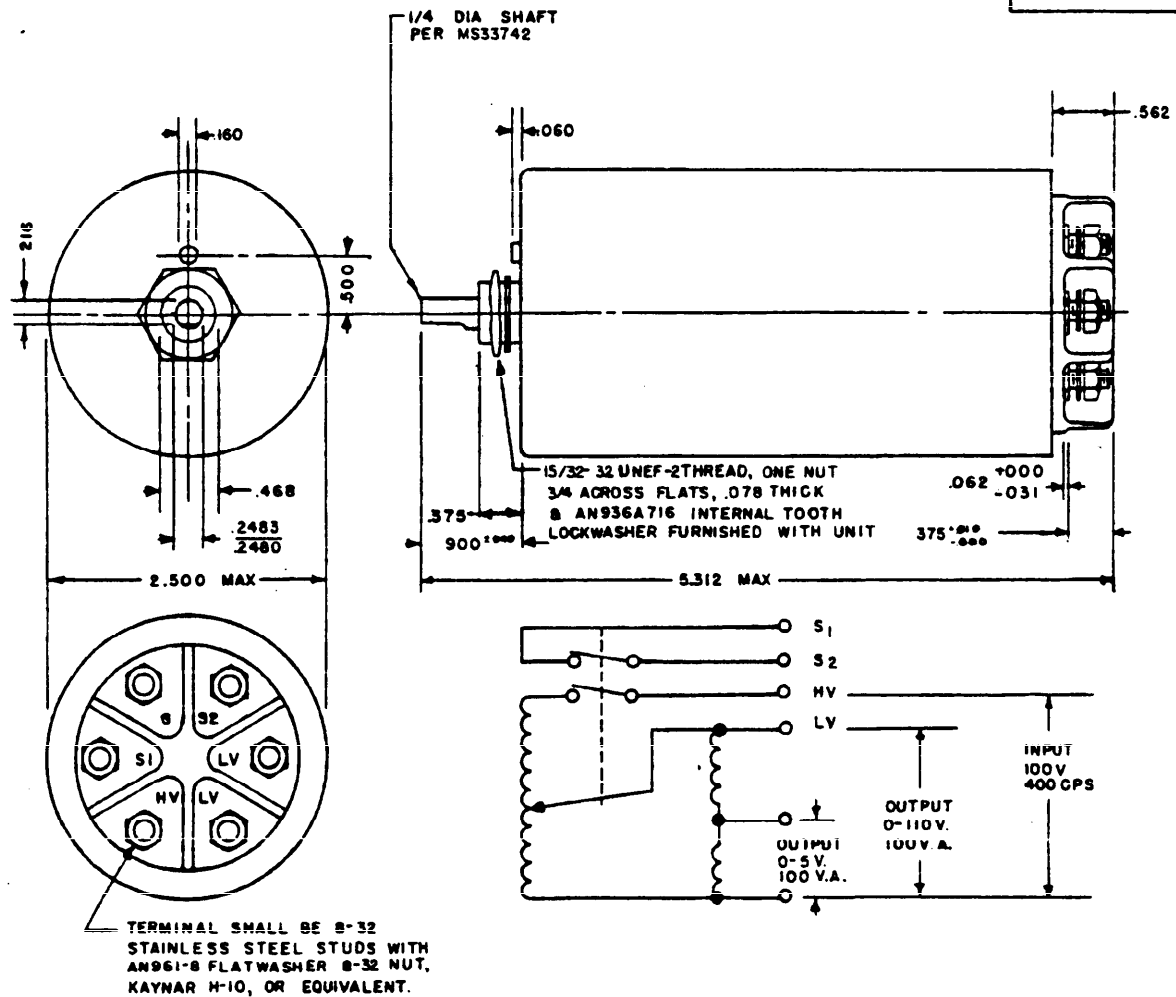


FED. SUP CLASS
5950

DASH NO.	INPUT		OUT PUT		MAX WEIGHT OZS.
	VOLT	FREQ.	VOLT	AMPS	
-1	115	400±20	0-115 0-5	0.9±20	28

THE PRIMARY WINDING SHALL BE EXTERNALLY FUSED FOR THE APPLICABLE RATING.

CLOCKWISE SHAFT ROTATION SHALL INCREASE OUTPUT VOLTAGE.

THE ON/OFF SWITCH SHALL CUT OFF ALL POWER TO THE UNIT AT CCW END OF SHAFT ROTATION.

THE AUXILIARY LIMIT SWITCH SHALL BE ACTUATED WITHIN THE FIRST 20° OF ROTATION FROM THE CCW END OF ROTATION, AND SHALL REMAIN ACTUATED THROUGHOUT THE ENTIRE RANGE OF OUTPUT.

DIMENSIONS IN INCHES, TOLERANCES UNLESS OTHERWISE SPECIFIED ±0.010
THE TRANSFORMER NEED NOT HAVE THE SHAPE SHOWN, BUT SHALL BE WITHIN THE OUTLINE SHOWN

FOR DESIGN PURPOSES, THIS STANDARD TAKES PRECEDENCE OVER PROCUREMENT DOCUMENTS REFERENCED HEREIN;
REFERENCED DOCUMENTS SHALL BE OF THE ISSUE IN EFFECT ON DATE OF INVITATION FOR BID.

Review activities:
USAF - 11
Navy - 1P

This standard has been approved by the Department of the Air Force (11) and the Department of the Navy and is mandatory for use by their activity. All other military activities are required to comply with this standard where suitable.

P.A. USAF-11 Other Cust Navy - WP	TITLE TRANSFORMER, VARIABLE, AIRCRAFT LIGHTING - DUAL OUTPUT	MILITARY STANDARD MS90312 (ASG)
PROCUREMENT SPECIFICATION MIL-T-27493	SUPERSEDES:	SHEET OF