

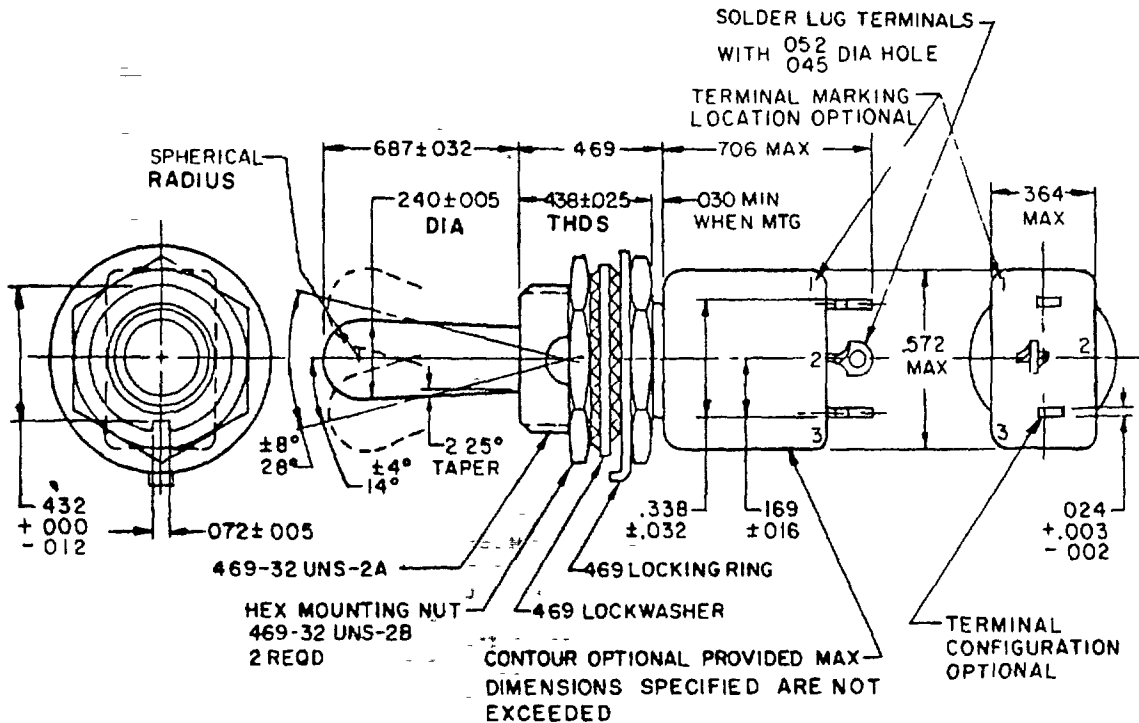
FED SUP CLASS
5930

User activities
A - MV - MI, AT
Navy -
Air Force -

Army - AR, AV
Navy - EC
Air Force - II, 17, 99

Re view activities

This military standard is approved for use by all Departments and Agencies of the Department of Defense. Selection for all new engineering and design applications and for repetitive use shall be made from this document when applicable.



DETAIL REQUIREMENTS.

MS DASH NO.	CIRCUIT MADE BETWEEN TERMINALS AS INDICATED WITH TOGGLE LEVER IN THESE POSITIONS (a)			CURRENT-CAPACITY IN AMPERES						LIFE LOW CURRENT LEVEL SWITCHING 5 mV
				RESISTIVE LOAD			INDUCTIVE LOAD			
				28 VOLTS DC	115 VOLTS		28 VOLTS DC	115 VOLTS		
					60 HERTZ AC	400 HERTZ AC		60 HERTZ AC	400 HERTZ AC	
-211	2-3 ON	OFF	ON 1-2	5	2	3	(b)	1	2	(c) 25 μA
-221		NONE	OFF							
-231			ON 1-2							
-241		OFF	NONE							
-271	MOM-ON 2-3		1-2 MOM-ON							
-281				NONE						
-311	ON 2-3									

- (a) Direction of movement of internal mechanism is opposite to the direction of the toggle movement
- (b) With time constant of $0.20 \pm .002$ seconds.
- (c) Contact resistance not to exceed 50 ohms during life, low current level switching
- (d) Non-functional terminals shall not be supplied

(G) denotes change.

P A Navy - AS	International Interest	TITLE	MILITARY STANDARD
Other Cust Army - ER AF - 85	ASCCAS 12/16A	SWITCH, TOGGLE, POSITIVE BREAK, MINIATURE, TOGGLE SEALED, SOLDER LUG, SINGLE POLE, 469 MOUNTING BUSHING	MS90310
Procurement Specification MIL-S-8834	SUPERSEDES	MS0090310(USAF)	PAGE 1 OF 2

DD FORM 1 MAY 73 672

(Coordinated) PREVIOUS EDITIONS OF THIS FORM ARE OBSOLETE

5930-1276-1

Distribution Statement A Approved for public release, distribution is unlimited

APPROVED 13 Jun 66 REVISED (G) 18 Oct 1985

FED SUP CLASS
5930

INCHES	MM	INCHES	MM	INCHES	MM	INCHES	MM
002	05	024	61	072	1 83	438	11 13
003	08	025	.64	169	4 29	469	11 91
005	.13	030	76	240	6 10	572	14 53
010	25	032	81	338	8 59	687	17 45
012	30	045	1 14	364	9 25	706	17 93
016	41	.052	1.32	432	10 97		

G NOTES

- 1 Dimensions are in inches
- 2 Metric equivalents (to the nearest 0.01 mm) are given for general information only
- 3 Unless otherwise specified, tolerances are ± 0.10 (0.25 mm) on decimals and $\pm 5^\circ$ on angles
- 4 For hardware detail specifications see appendix of MIL-S-8834
- 5 In the event of a conflict between the text of this standard and the references cited herein, the text of this standard shall take precedence
- 6 Referenced Government documents of the issue listed in that issue of the Department of Defense Index of Specifications and Standards (DoDISS) specified in the solicitation form a part of this standard to the extent specified herein.
- 7 Toggle seal test Method II
- 8 Shock Method I and Method II (high impact) The switch shall be electrically and mechanically operative at the conclusion of the shock test except there can be mechanical transfer of the contact mechanism at all levels when tested in accordance with Method II (high impact)
- 9 Maximum weight .0429 pound (19.4 grams)
- 10 Strength of terminals 5 pounds normal to the mounting plane and 2 pounds in other planes
11. Altitude 50,000 feet
12. 115 V ac, 60 hertz electrical endurance tests are to be performed at room temperature and pressure

Army - MI, AT
Navy -
Air Force -

User activities

Army - AR, AV
Navy - EC
Air Force - II, 17, 99

Review activities

This military standard is approved for use by all Departments and Agencies of the Department of Defense. Selection for all new engineering and design applications and for repetitive use shall be made from this document when applicable.

P A Navy - AS	International Interest	TITLE SWITCH, TOGGLE, POSITIVE BREAK, MINIATURE, TOGGLE SEALED, SOLDER LUG, SINGLE POLE, .469 MOUNTING BUSHING	MILITARY STANDARD
Other Cust Army - ER AF - 85	ASCCAS 12/16A		MS90310
Procurement Specification MIL-S-8834	SUPERSEDES	MS0090310(USAF)	PAGE 2 OF 2

DD FORM 672
1 MAY 73

(Coordinated) PREVIOUS EDITIONS OF THIS FORM ARE OBSOLETE

APPROVED 13 Jun 66 REVISED G FOR CHANGE SEE PAGE 2