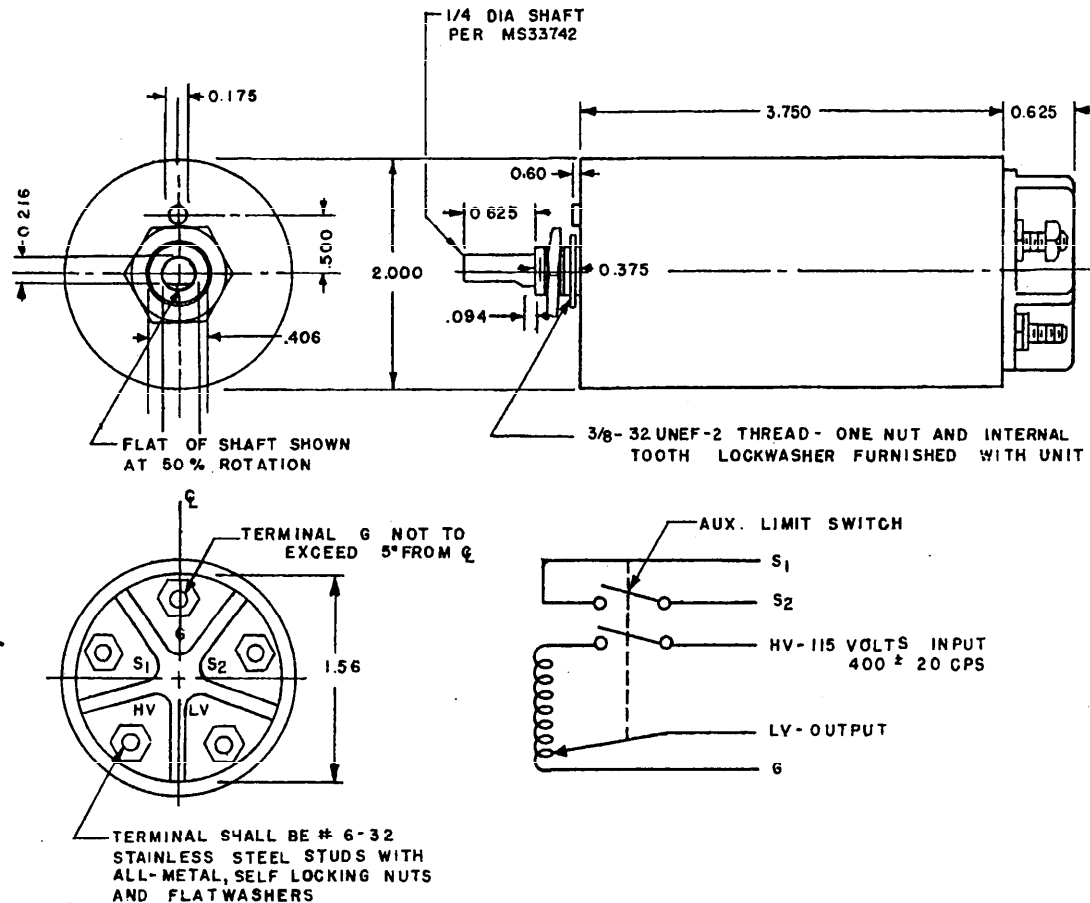


FED SUP CLASS
5950

DASH NO	INPUT		OUTPUT		MAX. WEIGHT OZS
	VOLTAGE	FREQ	NOMINAL VOLTAGE	MAX AMPS	
-1	115	400 ± 20	0-5.4	12.0	16.0
-2	115	400 ± 20	0-28	5.0	16.0

THE PRIMARY WINDING SHALL BE EXTERNALLY FUSED FOR THE APPLICABLE RATING.

CLOCKWISE SHAFT ROTATION SHALL INCREASE OUTPUT VOLTAGE.

THE ON/OFF SWITCH SHALL CUT OFF ALL POWER TO THE UNIT AT CCW END OF SHAFT ROTATION.

THE AUXILIARY LIMIT SWITCH SHALL BE ACTUATED WITHIN THE FIRST 20° OF ROTATION FROM THE CCW END OF ROTATION, AND SHALL REMAIN ACTUATED THROUGHOUT THE ENTIRE RANGE OF OUTPUT.

DIMENSIONS IN INCHES. TOLERANCES UNLESS OTHERWISE SPECIFIED ± 0.010.

THE TRANSFORMER NEED NOT HAVE THE SHAPE SHOWN, BUT SHALL BE WITHIN THE OUTLINE SHOWN.

FOR DESIGN PURPOSES, THIS STANDARD TAKES PRECEDENCE OVER PROCUREMENT DOCUMENTS REFERENCED HEREIN. REFERENCED DOCUMENTS SHALL BE OF THE ISSUE IN EFFECT ON DATE OF INVITATION FOR BID.

P.A. USAF-II Other Cust Navy-WP	TITLE TRANSFORMER, VARIABLE, AIRCRAFT LIGHTING	MILITARY STANDARD MS 90309 (ASO)	
PROCUREMENT SPECIFICATION MIL-T-27493	SUPERSEDES:	SHEET OF	