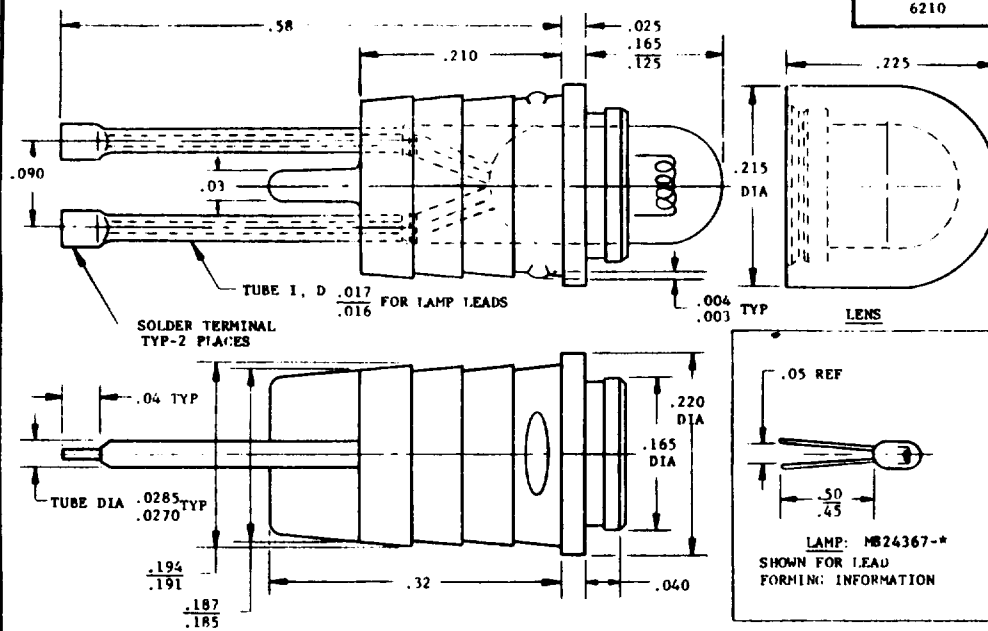


(PROJECT NO. 6210-N470)

FED. SUP CLASS
6210

MS PART NO.			LENS ONLY	
BASE, LENS, LAMP	BASE & LENS	BASE ONLY	LENS PART NO.	LENS COLOR
MS90308-9-*	MS90308-9	MS90308-10	MS90308-90	CLEAR
MS90308-2-*	MS90308-2	MS90308-10	MS90308-20	RED
MS90308-5-*	MS90308-5	MS90308-10	MS90308-50	GREEN
MS90308-4-*	MS90308-4	MS90308-10	MS90308-40	YELLOW
MS90308-6-*	MS90308-6	MS90308-10	MS90308-60	BLUE

*LAMP TRADE NO. (SEE NOTE 5)

NOTES:

1. DIMENSIONS IN INCHES, UNLESS OTHERWISE SPECIFIED, TOLERANCES: DECIMALS: 2 PLACE $\pm .01$ 3 PLACE $\pm .005$.
2. MATERIAL: BASE SHALL BE MOLDED OF WHITE OPAQUE POLYCARBONATE, LENS SHALL BE OF TRANSPARENT POLYCARBONATE.
SOLDER TERMINALS SHALL BE GOLD PLATED.
3. LENSES SHALL SNAP-FIT TO THE BASES, AND SHALL BE REMOVABLE WITHOUT TOOLS.
4. BASE DIAMETER SHALL BE CONCENTRIC WITHIN .010 I.I.R. (TOTAL INDICATOR RUNOUT).
5. LAMP REQUIRED SHALL BE TRADE NUMBERS, 680, 683, 715, OR 715 PER MS24367, AND SHALL BE DESIGNATED AS SUFFIXES TO THE MS NUMBER IN THE TABLE:
EXAMPLE: MS90308-2-680 (INDICATOR WITH RED LENS AND 680 LAMP).
6. COLORS OF LENSES SHALL CONFORM TO THE AVIATION COLORS OF MIL-C-25050, EXCEPT FOR MS90308-90.
7. INSTALLATION: MOUNTING HOLE SHALL BE $.191 \pm .003$ DIA.
8. SHIPPING: THE SHIPPING CONTAINER SHALL BE MARKED WITH THE MS NUMBER OF THE PART(S) CONTAINED.

FOR DESIGN FEATURE PURPOSES, THIS STANDARD TAKES PRECEDENCE OVER PROCUREMENT DOCUMENTS REFERENCED HEREIN.
REFERENCED DOCUMENTS SHALL BE OF THE ISSUE IN EFFECT ON DATE OF INVITATIONS FOR BID.

This standard is approved by Naval Air Systems Command, Department of the Navy and shall be used by that activity. All other military activities are required to use this standard where applicable.

P.A. NAVY - AS Other Cost	TITLE (B) LIGHT INDICATOR, SUBMINIATURE RETAMPABLE	MILITARY STANDARD MS90308(AS)
PROCUREMENT SPECIFICATION MIL-STD-883C	SUPERSEDES MS90308 (WEP)	SHEET 1 OF 1

672-1 (Limited coordination)

PREVIOUS EDITIONS OF THIS PAGE ARE OBSOLETE

REPLATE NO. 7109

APPROVED 26 MAY 1964 REVISED (A) 3 DEC 1970 (B) 17 AUG 1973