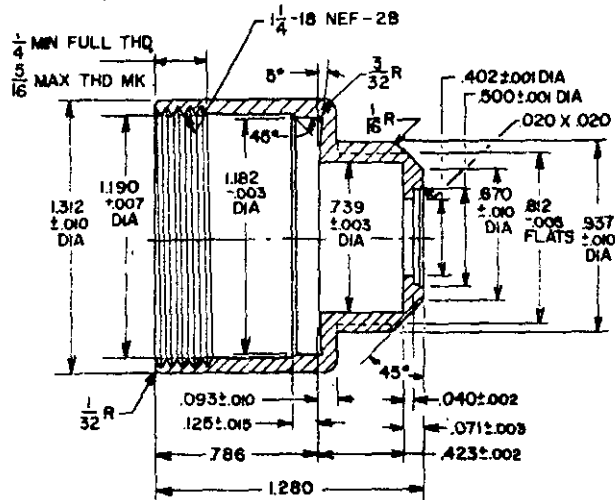


FED. SUP CLASS
5935

MS PART NO. MS90245-1

MATERIAL: BRASS

1. All dimensions in inches.
2. Unless otherwise specified, tolerances are $\pm .005$ on decimals and $\pm 1/2^\circ$ on angles.
3. Referenced document shall be of the issue in effect on date of invitation for bids.
4. This standard takes precedence over document referenced herein.

ⓑ CANCELED AFTER 14 October 1980 NO SUPERSEDING STANDARD

THIS PART IS FOR DESIGN USE ONLY AND IF NOT TO BE STOCKED OR CATALOGUED.

ENTIRE STANDARD REVISED

U.S. GOVERNMENT PRINTING OFFICE: 1980 - 703-023/4508

P.A. Sig C Other Cust Ships USAF	International Interest	TITLE BODY, SERIES C CONNECTORS	MILITARY STANDARD
Procurement Specification MIL-C-3989	SUPERSEDES:	MS90245 PAGE OF	

DD FORM 672 (Coordinated) PREVIOUS EDITIONS OF THIS FORM ARE OBSOLETE.

User activities: Army -
Navy -
Air Force -

Review activities: Army -
Navy -
Air Force -

This military standard is approved for use by all Departments and Agencies of the Department of Defense. Selection for all new engineering and design applications and for repetitive use shall be made from this document when applicable.

APPROVED 7 DEC 1951 REVISED (A) 16 SEPT 58 (B) 14 OCT 80