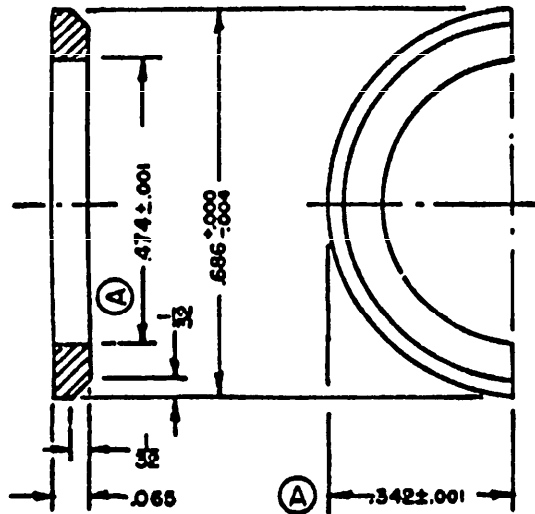


NOTICE: When Govt. and drawing specifications or other data are used for any purpose other than in connection with a contract with a Government agency, the United States Government therefor. No part of this drawing shall be reproduced by any means, in any form, without the written permission of the Department of Defense. The fact that the Government has furnished this drawing in whole or in part does not constitute an authorization of any other person or organization to copy, in whole or in part, this drawing for any purpose other than as authorized in writing by the Department of Defense.

(A)

FED. SUP CLASS.
5310

(A)

PART NO. MS9022-1 FIIN

(A)

NOTES:

1. All dimensions in inches.
2. Unless otherwise specified, tolerances are $\pm 1/64$ on fractions, $\pm .005$ on decimals, and $\pm 1/20^\circ$ on angles.
3. Material shall be brass conforming to composition B, half hard, of Specification QQ-B-611.
4. Referenced specification shall be of the issue in effect on date of invitation for bids.

APPROVED 7 Dec 1951 REVISED (A) 25 Nov 1951

CUSTODIAN #1
Army-Signal Corps
Navy-Bureau of Ships
Air Force
PROCUREMENT SPECIFICATION
NONE

MILITARY STANDARD

MS9022-1

WASHER, HALF; PART OF SERIES C CONNECTORS

SHEET 1 OF 1