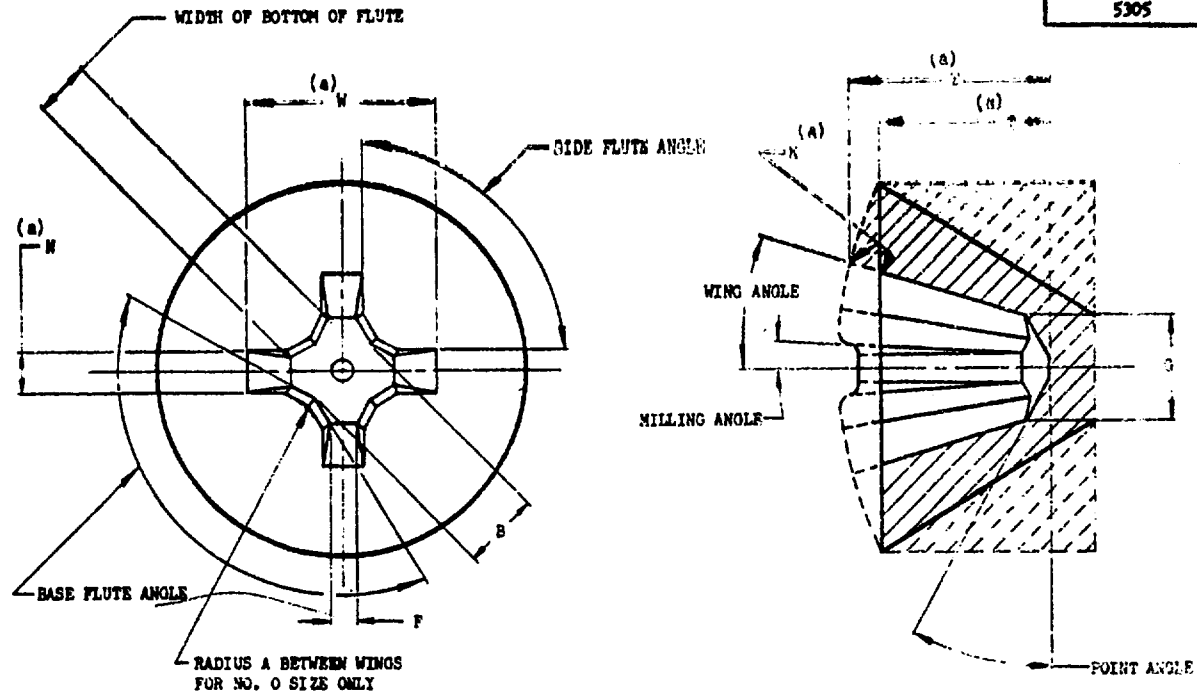


FED. SUP CLASS
5305



NOTICE—When Government drawings, specifications, or other data are used for any purpose other than in connection with a definitely related Government procurement operation, the United States Government thereby incurs no responsibility, nor any obligation whatsoever; and the fact that the Government may have furnished, furnished, or in any way supplied the said drawings, specifications, or other data is not to be regarded by implication or otherwise as in any manner favoring the holder or any other person or corporation, or conveying any rights or permission to manufacture, use, or sell any patented invention that may in any way be related thereto.

This drawing is approved by the Department of Defense and is mandatory on all activities. Substitution for all engineering and design applications and for repetitive use shall be made from this document.

DIMENSIONS	DIMENSIONS OF RECESSES						
	RECESS NUMBER						
	0	1	2	3	4	5	
Ø	+0.002 -0.000	.032	.050	.090	.150	.200	.311
B	.0250 ±0.0010	.0380 +0.0000 -0.0010	.0578 ±0.0010	.0950 ±0.0010	.1370 ±0.0010	.2270 ±0.0010	
MILLING ANGLE	7° +15' -0	7° +15' -0	5°45' +15' -0	5°45' +15' -0	7° +15' -0	7° +15' -0	
POINT ANGLE	28° +0 -1	28° +0 -1	28° +0 -1	28° +0 -1	28° +0 -1	28° +0 -1	
WING ANGLE +15' -0 (C)	26°30'	26°30'	26°30'	26°30'	26°30'	26°30'	
BASE FLUTE ANGLE +0 -15'	- - -	138°	140°	146°	153°	162°46'	
SIDE FLUTE ANGLE	92° +0 -15'	92° +0 -15'	92° +0 -15'	92° +0 -15'	92° +0 -15'	92° +0 -15'	
WIDTH OF BOTTOM OF FLUTE	.0140 .0104	.0180 .0160	.0330 .0310	.0800 .0780	.0960 .0960	.1640 .1590	
WING THICKNESS F	.014 .012	.021 .019	.029 .026	.032 .029	.050 .047	.070 .067	
A	.0101 .0075 (C)	- - -	- - -	- - -	- - -	- - -	

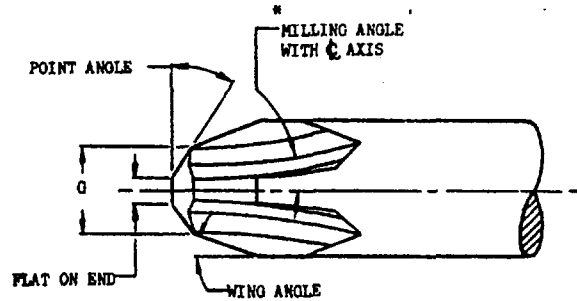
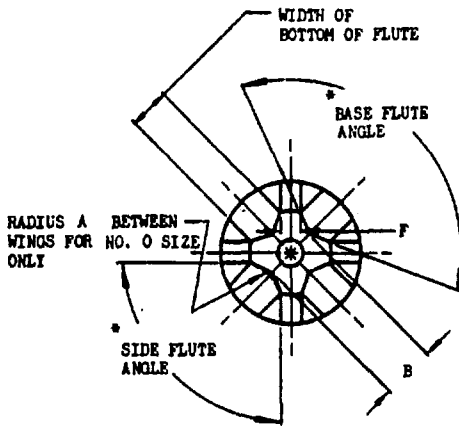
(a) UNLESS OTHERWISE SPECIFIED, USE SHEET 4 VALUES FOR DIMENSIONS W, T, N, K, AND DEPTH OF GAGE PENETRATIONS. IF THE SHEET 4 VALUES ARE NOT COMPATIBLE WITH THE HEAD CONFIGURATION AND PERFORMANCE REQUIREMENTS OF A PARTICULAR ITEM, THE VALUES WILL BE SPECIFIED ON THE ITEM STANDARD.

SHEETS 1 AND 2 OF THIS STANDARD ARE THE SUBJECT OF INTERNATIONAL STANDARDIZATION AGREEMENT ABC AIR STD 17/30. WHEN REVISION OR CANCELLATION OF THIS STANDARD IS PROPOSED, THE DEPARTMENTAL CUSTODIANS WILL INFORM THEIR RESPECTIVE DEPARTMENTAL STANDARDIZATION OFFICES SO THAT APPROPRIATE ACTION MAY BE TAKEN RESPECTING THE INTERNATIONAL AGREEMENT CONCERNED.

THIS IS A DESIGN STANDARD. NOT TO BE USED AS A PART NUMBER. (C) FOR CHANGES SEE SHEETS 2, 3, ...

P.A. USAF - ASD Other Cust Army - WC Navy - Maps	INTERNATIONAL INTEREST	TITLE	MILITARY STANDARD
		RECESSES - CROSS, LOW TORQUE DRIVE, DIMENSIONS AND GAGE DIMENSIONS FOR	MS9006
PROCUREMENT SPECIFICATION NONE	SUPERSEDES: MS9001 THRU MS9005, MS33578 AND ANDI0477 (C)		SHEET 1 OF 4

APPROVED 1 049 57 REVISED (A) 13 Oct 61 (B) 21 Nov 61 (C) 20 Jun 63



NOTICE: When Government drawings, specifications, or other data are used for any purpose other than in connection with a definitely related Government procurement operation, the United States Government hereby assumes no responsibility, nor any obligation whatsoever, and the fact that the Government may have furnished, furnished, or in any way supplied the said drawings, specifications, or other data is not to be regarded by implication or otherwise as in any manner licensing the holder or any other person or corporation, or conveying any rights or permission to manufacture, use, or sell any patented invention that may in any way be related thereto.

This military standard is approved by the Department of Defense and is mandatory on all activities. Solicitation for all new engineering and design applications and for repetitive use shall be made from this document.

DIMENSIONS OF GAGE POINTS

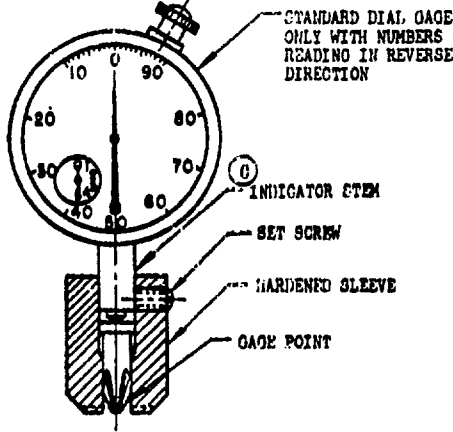
DIMENSIONS	RECESS NUMBER					
	0	1	2	3	4	5
G +.001 -.000	.032	.050	.090	.150	.200	.311
B +.0000 -.0010	.0240	.0394	.0606	.0983	.1407	.2310
MILLING ANGLE	7° +0 -15'	7° +0 -15'	5°45' +0 -15'	5°45' +0 -15'	7° +0 -15'	7° +0 -15'
POINT ANGLE	18° +1° -0	18° +1° -0	18° +1° -0	18° +1° -0	18° +1° -0	18° +1° -0
FLAT ON END	.015 .010	.020 .015	.020 .015	.020 .015	.020 .015	.025 .020
WING ANGLE +0 -15'	26°30'	26°30'	26°30'	26°30'	26°30'	26°30'
BASE FLUTE ANGLE +15' -0	- - -	138°	140°	146°	153°	162°46'
SIDE FLUTE ANGLE +15' -0	92°	92°	92°	92°	92°	92°
WIDTH OF BOTTOM OF FLUTE	.0151 .0125	.0202 .0192	.0434 .0424	.0826 .0816	.1078 .1068	.1730 .1720
WING THICKNESS F	.012 .010	.020 .018	.025 .023	.031 .029	.044 .042	.063 .061
A	.0109 .0090	- - -	- - -	- - -	- - -	- - -

THIS IS A DESIGN STANDARD. NOT TO BE USED AS A PART NUMBER.

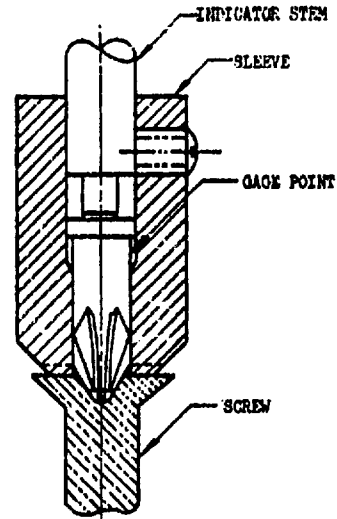
P. A. USAF - ASD Other Code	INTERNATIONAL INTEREST	TITLE	MILITARY STANDARD
Army - WC Navy - Mops		RECESSES - CROSS, LOW TORQUE DRIVE, DIMENSIONS AND GAGE DIMENSIONS FOR	MS9006
PROCUREMENT SPECIFICATION NONE	SUPERSEDES:	MS9001 THRU MS9005, 1533578 AND AND10477	SHEET 2

NOTICE—When Government drawings, specifications, or other data are used for any purpose other than in connection with a definitely related Government procurement operation, the United States Government thereby incurs no responsibility, nor any obligation whatsoever, and the fact that the Government may have furnished, furnished, or in any way supplied the said drawings, specifications, or other data is not to be regarded by implication or otherwise as in any manner forming the basis or a part thereof or in any way constituting an endorsement, approval, or recommendation by the Government, or any agency thereof, of the quality or value thereof, or in any way constituting a warranty, or in any way constituting a contract, or in any way constituting a part of the consideration therefor, or in any way constituting a part of the consideration therefor, or in any way constituting a part of the consideration therefor.

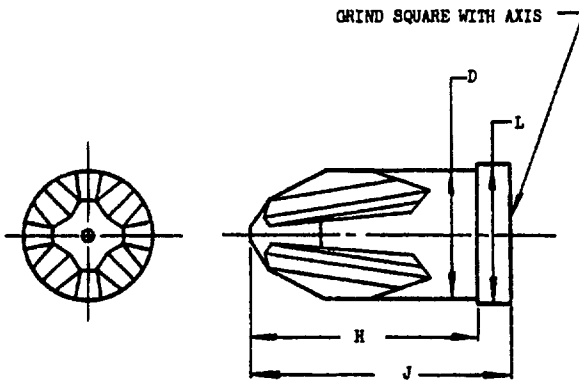
This military standard is approved by the Department of Defense and is mandatory on all activities. Selection for all new engineering and design applications and for repetitive use shall be made from this document.



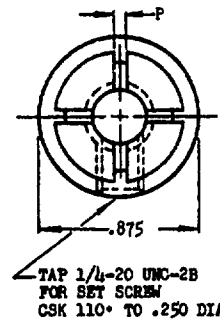
GAGE ASSEMBLY



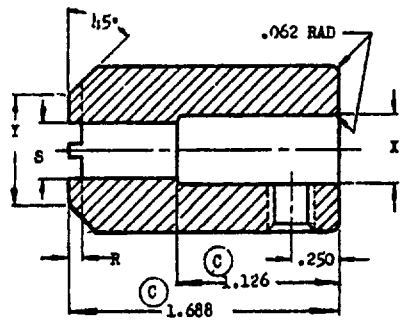
GAGE SHOWN IN GAGING POSITION



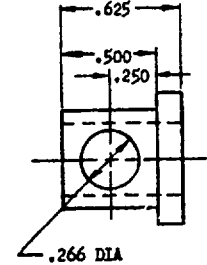
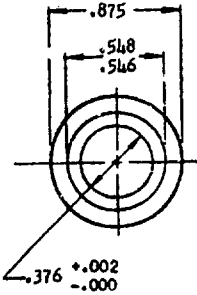
GAGE POINT



SLEEVE



RECESS NUMBER	GAGE POINT				SLEEVE				
	D ±.0002 SHANK DIA	H ±.005	J ±.005	L ±.005 DIA	P ±.002	R ±.003	S ±.0002 DIA	X +.002 -.000 DIA	Y ±.005 DIA
0	.0450	.656	.781	.094	.008	.015	.0460		
1	.0870	.688	.812	.156	.012	.020	.0880		
2	.1410	.750	.875	.219	.018	.031	.1420	.376	.562
3	.2090	.781	.906	.250	.022	.037	.2100		
4	.3120	.844	.969	.359	.031	.062	.3130		
5	.500	1.031	1.156	.531	.041	.094	.5010	.549	.750



DIMENSIONS IN INCHES. UNLESS OTHERWISE SPECIFIED, TOLERANCES: DECIMALS ±.016. FOR DRIVER DATA, SEE GOG-S-121.

THIS IS A DESIGN STANDARD. NOT TO BE USED AS A PART NUMBER.

P.A. USAP-ASD Other Cust Army-NC Navy-Maps	INTERNATIONAL INTEREST	TITLE RECESSES - CROSS, LOW TORQUE DRIVE, DIMENSIONS AND GAGE DIMENSIONS FOR	MILITARY STANDARD MS9006
PROCUREMENT SPECIFICATION NONE	SUPERSEDES: MS9001 THRU MS9005, MS33578, AND AND10L77		SHEET 3

INCH-POUND

**NOTICE
OF VALIDATION**

**MS9006C
NOTICE 1
3 October 1991**

MILITARY STANDARD

**RECESSES-CROSS, LOW TORQUE DRIVE,
DIMENSIONS AND GAGE DIMENSIONS FOR**

MS9006C, dated 20 June 1963, has been reviewed and determined to be valid for use in acquisition.

Custodians:
Army - AR
Navy - AS
Air Force - 99

Preparing activity:
Navy - AS