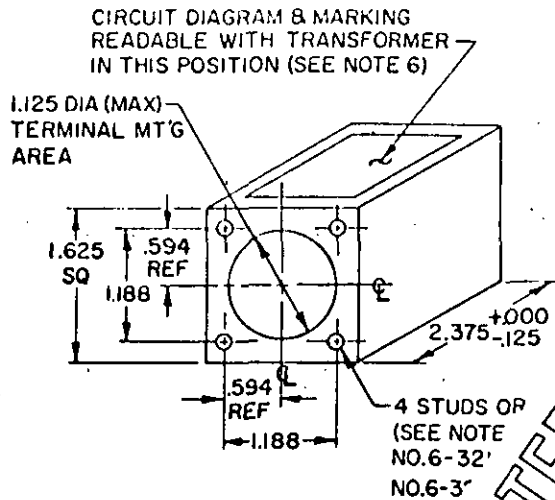
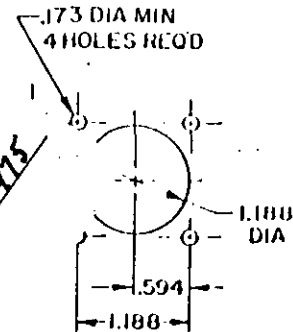


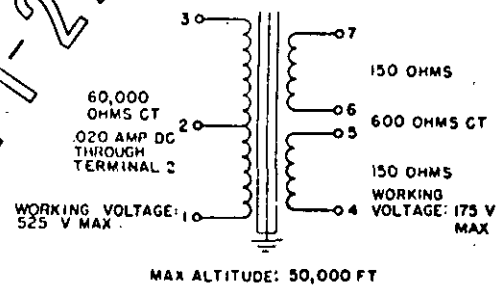
FED. SUP CLASS
5950

MINIMUM CHASSIS CUTOUT



INCHES	MM
.125	3.18
.173	4.39
3/8	9.53
.594	15.09
1.125	28.58
1.188	30.18
1.625	41.28
2.375	60.33

CIRCUIT DIAGRAM AND MARKING

300 TO 10,000 Hz
POWER LEVEL: .5 W MAX

NOTES:

1. All dims.
2. Unless othe.
3. Tolerance on m.
4. Metric equivalents (to 1 inch = 25.4 mm).
5. Terminal arrangement optional within mounting area indicated.
6. Type designation, MS part no. and manufacturer's name or code symbol to be marked on side opposite terminals.
7. Referenced document shall be of the issue in effect on date of invitations for bid.
8. For design feature purposes, this standard takes precedence over procurement document referenced herein.
9. Inserts not recommended for new design.

Mounting	MS part no.	Type designation
Studs	MS90008-A	TF4RX13AJ005
Inserts	MS90008-B	TF4RX13AJ005

P.A. ARMY-EL Other Cust NAVY-EC AIR FORCE -80	International interest	TITLE TRANSFORMER, AUDIO FREQUENCY, TYPE TF4RX13AJ005 ©	MILITARY STANDARD MS 90008
Procurement Specification MIL-T-27	SUPERSEDES:		SHEET 1 OF 2

DD FORM 672 (Coordinated) PREVIOUS EDITIONS OF THIS FORM ARE OBSOLETE.

5950-0498-9

User activities: Army MI
Navy MC, CG
Air Force 19Reviewer activities: Army EL, MU
Navy EC, SH
Air Force 11, 80, 17

This military standard is mandatory for use by all Departments and Agencies of the Department of Defense. Selection for all new engineering and design applications and for repetitive use shall be made from this document.

APPROVED 28 JUNE 1956 REVISED (A) 19 FEB 1960 (B) 21 SEP 65 (C) 3 SEP 71 (D) 1 AUG 1975